

SMA Male to MMCX Plug Cable Using PE-SR405FL Coax



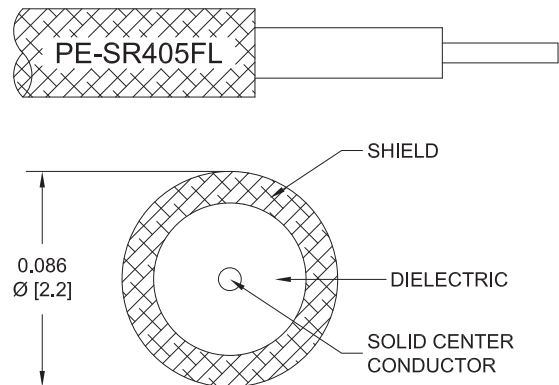
PE3W02523

Configuration

- Connector 1: SMA Male
- Connector 2: MMCX Plug
- Cable Type: PE-SR405FL
- Coax Flex Type: Formable

Features

- Max Frequency 6 GHz
- 69.5% Phase Velocity



Applications

- General Purpose
- Laboratory Use

Description

Pasternack's PE3W02523 SMA male to MMCX plug cable using PE-SR405FL coax is part of our full line of RF components available for same-day shipping. Pasternack's formable RF cable assemblies provide an alternative to costly pre-formed semi-rigid assemblies since they are hand formable. This Pasternack SMA to MMCX cable assembly has a male to plug gender configuration with 50 ohm formable PE-SR405FL coax. The PE3W02523 SMA male to MMCX plug cable assembly operates to 6 GHz.

Custom versions of most RF cable assemblies can be built and shipped same day. Custom cable assembly lengths can be obtained by specifying the desired length on the web site at time of order or by contacting a sales representative. Other available RF cable assembly value added services include connector orientation or clocking, heat shrink booting and custom labeling. RF testing can also be performed to document the electrical performance of your cable assembly.

Electrical Specifications

Description	Minimum	Typical	Maximum	Units
Frequency Range	DC		6	GHz
Velocity of Propagation		69.5		%
Capacitance		29 [95.14]		pF/ft [pF/m]
DC Resistance Inner Conductor		65.7 [215.55]		Ohms/1000ft [Ohms/Km]
DC Resistance Outer Conductor		10.2 [33.46]		Ohms/1000ft [Ohms/Km]

Specifications by Frequency

SMA Male to MMCX Plug Cable Using PE-SR405FL Coax



PE3W02523

Part Number	Length	Description	F1	F2	F3	F4	F5	Units	Weight (lbs)
			Frequency		500	1000	2500	5000	
PE3W02523	Custom Lengths Available	Insertion Loss (Typ.)	0.15	0.23	0.346	0.549	0.601	dB/ft	
			0.5	0.74	1.14	1.81	1.98	dB/m	
PE3W02523-6	6 inch	Insertion Loss (Typ.)	0.28	0.32	0.38	0.48	0.51	dB	0.017
PE3W02523-9	9 inch	Insertion Loss (Typ.)	0.32	0.37	0.46	0.62	0.66	dB	0.02
PE3W02523-12	12 inch	Insertion Loss (Typ.)	0.35	0.43	0.55	0.75	0.81	dB	0.022
PE3W02523-24	24 inch	Insertion Loss (Typ.)	0.5	0.65	0.9	1.3	1.41	dB	0.034
PE3W02523-36	36 inch	Insertion Loss (Typ.)	0.65	0.88	1.24	1.85	2.01	dB	0.045

The insertion loss data for the base model does not include loss due to the connectors. Each length includes insertion loss due to the connectors.

Loss due to Connector 1:	0.1 dB
Loss due to Connector 2:	0.1 dB
Base Weight:	0.022 pounds
Additional Weight per Inch:	0.00092 pounds

Mechanical Specifications

Cable Assembly

Width/Diameter	0.5 in [12.7 mm]
Weight	0.022 lbs [9.98 g]

Cable

Cable Type	PE-SR405FL
Impedance	50 Ohms
Inner Conductor Type	Solid
Inner Conductor Material and Plating	Copper Clad Steel, Silver
Dielectric Type	PTFE
Number of Shields	1
Shield Layer 1	Tinned Copper Braid

Connectors

Description	Connector 1	Connector 2
Type	SMA Male	MMCX Plug
Impedance	50 Ohms	50 Ohms
Configuration	Straight	Straight
Contact Material and Plating	Brass, Gold over Nickel	Brass, Gold
Dielectric Type	PTFE	PTFE
Body Material and Plating	Brass, Gold over Nickel	Brass, Gold
Coupling Nut Material and Plating	Passivated Stainless Steel	
Hex Size	5/16 inch	
Torque	8 in-lbs 0.9 Nm	

SMA Male to MMCX Plug Cable Using PE-SR405FL Coax



PE3W02523

Environmental Specifications

Compliance Certifications (see [product page](#) for current document)

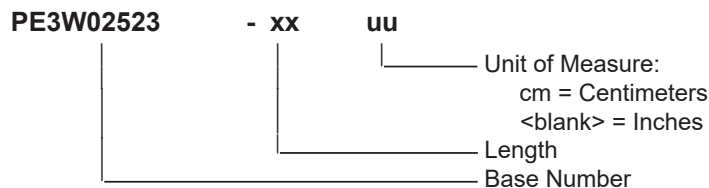
Plotted and Other Data

Notes:

Typical Performance Data

How to Order

Part Number Configuration:



Example: PE3W02523-12 = 12 inches long cable
PE3W02523-100cm = 100 cm long cable

SMA Male to MMCX Plug Cable Using PE-SR405FL Coax from Pasternack Enterprises has same day shipment for domestic and International orders. Our RF, microwave and millimeter wave products maintain a 99.4% availability and are part of the broadest selection in the industry.

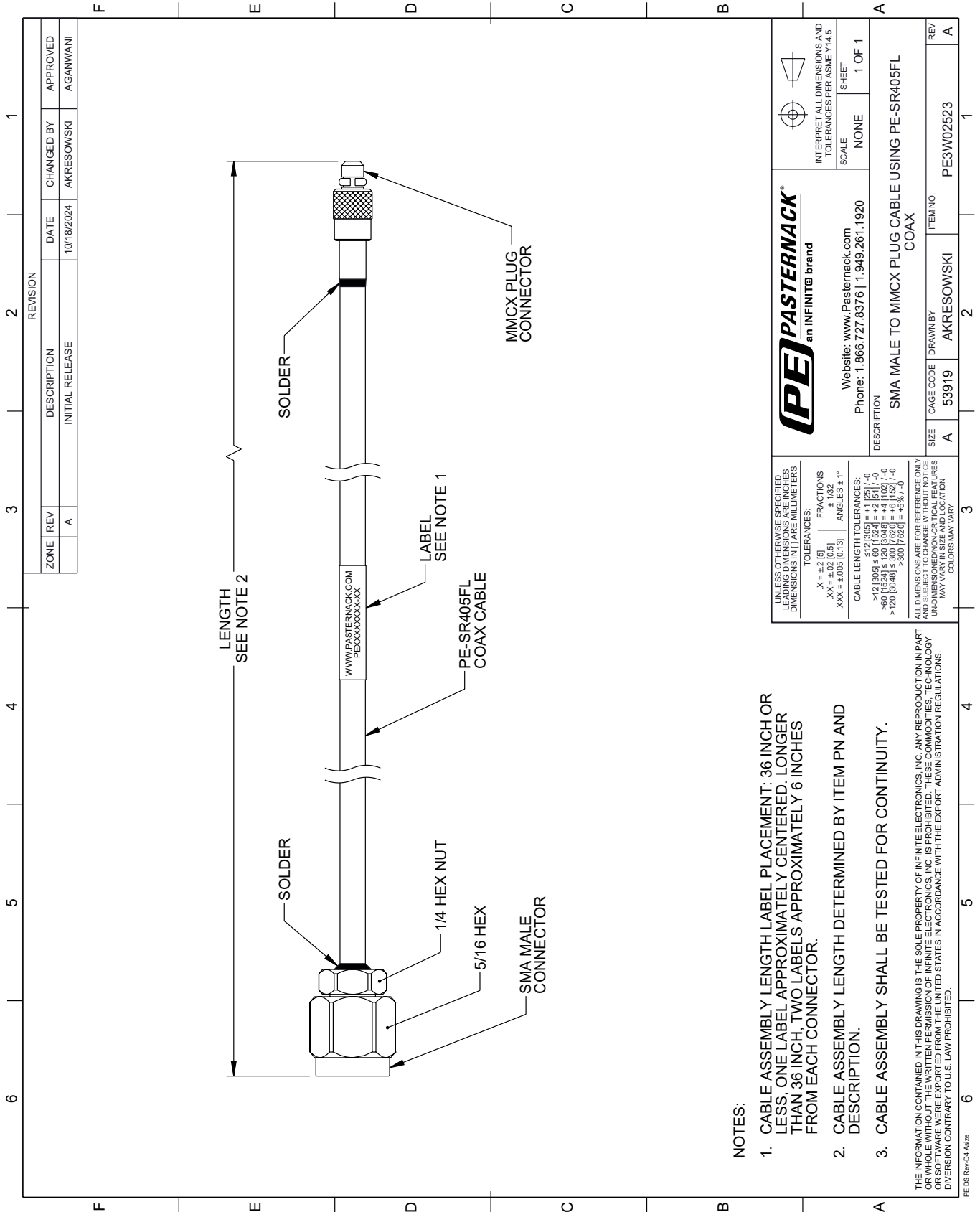
Click the following link (or enter part number in "SEARCH" on website) to obtain additional part information including price, inventory and certifications: [SMA Male to MMCX Plug Cable Using PE-SR405FL Coax PE3W02523](#)

URL: <https://www.pasternack.com/sma-male-to-mmcx-plug-cable-using-pe-sr405fl-pe3w02523-p.aspx>

The information contained within this document is accurate to the best of our knowledge and representative of the part described herein. It may be necessary to make modifications to the part and/or the documentation of the part in order to implement improvements. Pasternack Enterprises reserves the right to make such changes as required. Unless otherwise stated, all specifications are nominal. Pasternack Enterprises does not make any representation or warranty regarding the suitability of the part described herein for any particular purpose, and Pasternack Enterprises does not assume liability arising out of the use of any part or document.

PE3W02523 CAD Drawing

SMA Male to MMCX Plug Cable Using PE-SR405FL Coax



NOTES:

1. CABLE ASSEMBLY LENGTH LABEL PLACEMENT: 36 INCH OR LESS, ONE LABEL APPROXIMATELY CENTERED, LONGER THAN 36 INCH, TWO LABELS APPROXIMATELY 6 INCHES FROM EACH CONNECTOR.
2. CABLE ASSEMBLY LENGTH DETERMINED BY ITEM PN AND DESCRIPTION.
3. CABLE ASSEMBLY SHALL BE TESTED FOR CONTINUITY.

THE INFORMATION CONTAINED IN THIS DRAWING IS THE SOLE PROPERTY OF INFINITE ELECTRONICS, INC. ANY REPRODUCTION IN PART OR WHOLE WITHOUT THE WRITTEN PERMISSION OF INFINITE ELECTRONICS, INC. IS PROHIBITED. THESE COMMODITIES, TECHNOLOGY OR SOFTWARE WERE EXPORTED FROM THE UNITED STATES IN ACCORDANCE WITH THE EXPORT ADMINISTRATION REGULATIONS. DIVERSION CONTRARY TO U.S. LAW PROHIBITED.

PE DS Rev-D4 Add2

REVISION		DATE	CHANGED BY	APPROVED
ZONE	REV			
	A	10/18/2024	AKRESOWSKI	AGANWANI
DESCRIPTION				
INITIAL RELEASE				

<p>an INFINITE brand</p>			
		<p>INTERPRET ALL DIMENSIONS AND TOLERANCES PER ASME Y14.5</p> <p>SCALE: NONE</p> <p>SHEET: 1 OF 1</p>	
<p>Website: www.Pasternack.com</p> <p>Phone: 1.866.727.8376 1.949.261.1920</p>			
<p>DESCRIPTION: SMA MALE TO MMCX PLUG CABLE USING PE-SR405FL COAX</p>			
SIZE	CAGE CODE	DRAWN BY	ITEM NO.
A	53919	AKRESOWSKI	PE3W02523
REV		A	

UNLESS OTHERWISE SPECIFIED, LEADING DIMENSIONS ARE IN INCHES. DIMENSIONS IN [] ARE MILLIMETERS.

TOLERANCES:

.X = ±.2 [5]	FRACTIONS
.XX = ±.02 [0.5]	± 1/32
.XXX = ±.005 [0.13]	ANGLES ± 1°

CABLE LENGTH TOLERANCES:

< 12 [305]	±.60 [15.24]
> 12 [305] < 60 [1524]	±.2 [5.1]
> 60 [1524] < 120 [3048]	±.4 [10.2]
> 120 [3048]	±.8 [20.3]

ALL DIMENSIONS ARE FOR REFERENCE ONLY. UNLESS OTHERWISE SPECIFIED, DIMENSIONS ARE IN INCHES. DIMENSIONS IN [] ARE MILLIMETERS. DIMENSIONS AND LOCATIONS MAY VARY IN SIZE AND LOCATION. COLORS MAY VARY.