

SMA Female to Limited Detent SMP Male 2 Hole Flange Cable Using PE-SR405AL Coax



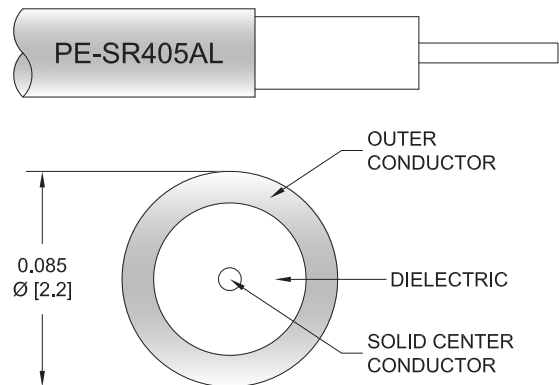
PE3W02604

Configuration

- Connector 1: SMA Female
- Connector 2: Limited Detent SMP Male 2 Hole Flange
- Cable Type: PE-SR405AL
- Coax Flex Type: Semi-Rigid

Features

- Max Frequency 18 GHz



Applications

- General Purpose
- Laboratory Use

Description

Pasternack's PE3W02604 SMA female to SMP male limited detent 2 hole flange cable using PE-SR405AL coax is part of our full line of RF components available for same-day shipping. Pasternack's semi-rigid RF cable assemblies are ideal for high performance applications and can be formed, using proper tooling, to the routing pattern required. This Pasternack SMA to SMP cable assembly has a female to male gender configuration with 50 ohm semi-rigid PE-SR405AL coax. The PE3W02604 SMA female to SMP male cable assembly operates to 18 GHz. Our RF cable assembly with SMP 2 hole flange interface allows designers to create external connections on their product enclosures, and can be used in a variety of other rack mount and panel mount applications.

Custom versions of most RF cable assemblies can be built and shipped same day. Custom cable assembly lengths can be obtained by specifying the desired length on the web site at time of order or by contacting a sales representative. Other available RF cable assembly value added services include connector orientation or clocking, heat shrink booting and custom labeling. RF testing can also be performed to document the electrical performance of your cable assembly.

Electrical Specifications

Description	Minimum	Typical	Maximum	Units
Frequency Range	DC		18	
VSWR			1.4:1	

Specifications by Frequency

SMA Female to Limited Detent SMP Male 2 Hole Flange Cable Using PE-SR405AL Coax



PE3W02604

Part Number	Length	Description	F1	F2	F3	F4	F5	Units	Weight (lbs)
			Frequency					MHz	
PE3W02604	Custom Lengths Available	Insertion Loss (Typ.)	0.23	0.27	0.44	0.74	1.21	dB/ft	
			0.76	0.89	1.45	2.43	3.97	dB/m	
PE3W02604-6	6 inch	Insertion Loss (Typ.)	0.32	0.34	0.42	0.57	0.81	dB	0.02
PE3W02604-12	12 inch	Insertion Loss (Typ.)	0.43	0.47	0.64	0.94	1.41	dB	0.027
PE3W02604-18	18 inch	Insertion Loss (Typ.)	0.55	0.61	0.86	1.31	2.02	dB	0.035
PE3W02604-24	24 inch	Insertion Loss (Typ.)	0.66	0.74	1.08	1.68	2.62	dB	0.042
PE3W02604-36	36 inch	Insertion Loss (Typ.)	0.89	1.01	1.52	2.42	3.83	dB	0.056

The insertion loss data for the base model does not include loss due to the connectors. Each length includes insertion loss due to the connectors.

Loss due to Connector 1:	0.1 dB
Loss due to Connector 2:	0.1 dB
Base Weight:	0.027 pounds
Additional Weight per Inch:	0.00117 pounds

Mechanical Specifications

Cable Assembly

Weight 0.027 lbs [12.25 g]

Cable

Cable Type	PE-SR405AL
Impedance	50 Ohms
Inner Conductor Type	Solid
Inner Conductor Material and Plating	Copper Clad Steel, Silver
Dielectric Type	PTFE
Number of Shields	1
Shield Layer 1	Tinned Aluminum

Connectors

Description	Connector 1	Connector 2
Type	SMA Female	SMP Male 2 Hole Flange
Specification		MIL-STD-348A
Impedance	50 Ohms	50 Ohms
Configuration	Straight	Straight
Connection Method		Limited Detent
Contact Material and Plating	Beryllium Copper, Gold over Nickel	Brass, Gold
Contact Plating Specification		30μ in. minimum
Dielectric Type	PTFE	Teflon
Body Material and Plating	Brass, Gold over Nickel	Brass, Gold
Body Plating Specification		3μ in. minimum

SMA Female to Limited Detent SMP Male 2 Hole Flange Cable Using PE-SR405AL Coax



PE3W02604

Environmental Specifications

Compliance Certifications (see [product page](#) for current document)

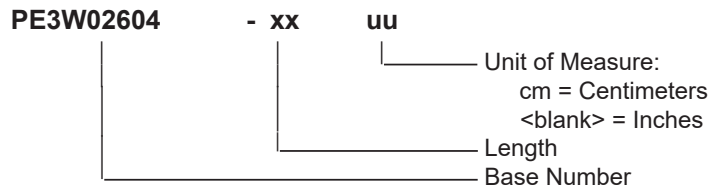
Plotted and Other Data

Notes:

Typical Performance Data

How to Order

Part Number Configuration:



Example: PE3W02604-12 = 12 inches long cable
PE3W02604-100cm = 100 cm long cable

SMA Female to Limited Detent SMP Male 2 Hole Flange Cable Using PE-SR405AL Coax from Pasternack Enterprises has same day shipment for domestic and International orders. Our RF, microwave and millimeter wave products maintain a 99.4% availability and are part of the broadest selection in the industry.

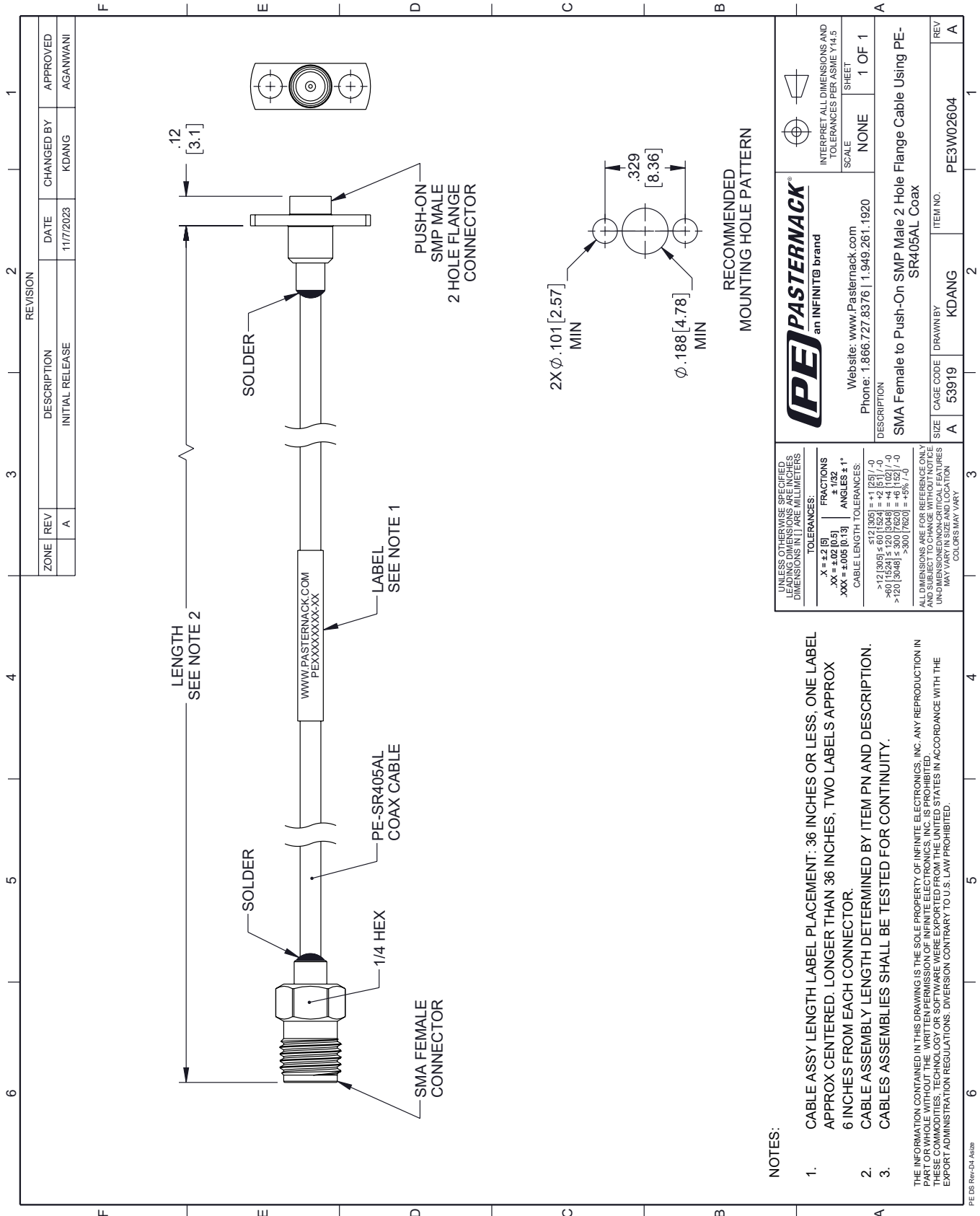
Click the following link (or enter part number in "SEARCH" on website) to obtain additional part information including price, inventory and certifications: [SMA Female to Limited Detent SMP Male 2 Hole Flange Cable Using PE-SR405AL Coax PE3W02604](#)

URL: <https://www.pasternack.com/sma-female-to-limited-detent-smp-male-2-hole-flange-cable-using-pe-sr405al-pe3w02604-p.aspx>

The information contained within this document is accurate to the best of our knowledge and representative of the part described herein. It may be necessary to make modifications to the part and/or the documentation of the part in order to implement improvements. Pasternack Enterprises reserves the right to make such changes as required. Unless otherwise stated, all specifications are nominal. Pasternack Enterprises does not make any representation or warranty regarding the suitability of the part described herein for any particular purpose, and Pasternack Enterprises does not assume liability arising out of the use of any part or document.

PE3W02604 CAD Drawing

SMA Female to Limited Detent SMP Male 2 Hole Flange Cable Using PE-SR405AL Coax



NOTES:

1. CABLE ASSY LENGTH LABEL PLACEMENT: .36 INCHES OR LESS, ONE LABEL APPROX CENTERED. LONGER THAN .36 INCHES, TWO LABELS APPROX .6 INCHES FROM EACH CONNECTOR.
2. CABLE ASSEMBLY LENGTH DETERMINED BY ITEM PN AND DESCRIPTION.
3. CABLE ASSEMBLIES SHALL BE TESTED FOR CONTINUITY.

THE INFORMATION CONTAINED IN THIS DRAWING IS THE SOLE PROPERTY OF INFINITE ELECTRONICS, INC. ANY REPRODUCTION IN PART OR WHOLE WITHOUT THE WRITTEN PERMISSION OF INFINITE ELECTRONICS, INC. IS PROHIBITED. THESE COMMODITIES, TECHNOLOGY OR SOFTWARE WERE EXPORTED FROM THE UNITED STATES IN ACCORDANCE WITH THE EXPORT ADMINISTRATION REGULATIONS. DIVERSION CONTRARY TO U.S. LAW PROHIBITED.

PE DS Rev-D4-A320