

SMA Male to SMA Male Cable Using PE-SR405FL Coax



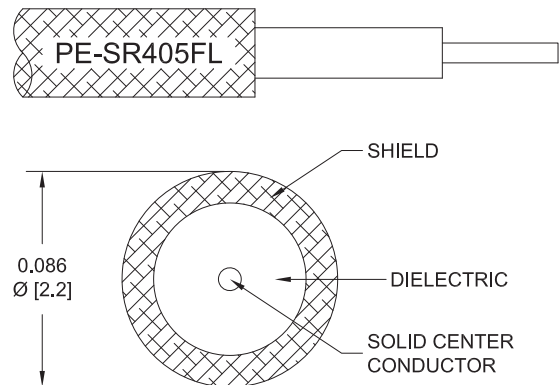
PE3W02621

Configuration

- Connector 1: SMA Male
- Connector 2: SMA Male
- Cable Type: PE-SR405FL
- Coax Flex Type: Formable

Features

- Max Frequency 18 GHz
- 69.5% Phase Velocity



Applications

- General Purpose
- Laboratory Use

Description

Pasternack's PE3W02621 SMA male to SMA male cable using PE-SR405FL coax is part of our full line of RF components available for same-day shipping. Pasternack's formable RF cable assemblies provide an alternative to costly pre-formed semi-rigid assemblies since they are hand formable. This Pasternack SMA to SMA cable assembly has a male to male gender configuration with 50 ohm formable PE-SR405FL coax. The PE3W02621 SMA male to SMA male cable assembly operates to 18 GHz.

Custom versions of most RF cable assemblies can be built and shipped same day. Custom cable assembly lengths can be obtained by specifying the desired length on the web site at time of order or by contacting a sales representative. Other available RF cable assembly value added services include connector orientation or clocking, heat shrink booting and custom labeling. RF testing can also be performed to document the electrical performance of your cable assembly.

Electrical Specifications

Description	Minimum	Typical	Maximum	Units
Frequency Range	DC		18	GHz
VSWR			1.4:1	
Velocity of Propagation		69.5		%
Capacitance		29 [95.14]		pF/ft [pF/m]
DC Resistance Inner Conductor		65.7 [215.55]		Ohms/1000ft [Ohms/Km]
DC Resistance Outer Conductor		10.2 [33.46]		Ohms/1000ft [Ohms/Km]

Specifications by Frequency

SMA Male to SMA Male Cable Using PE-SR405FL Coax



PE3W02621

Part Number	Length	Description	F1	F2	F3	F4	F5	Units	Weight (lbs)
			Frequency		1000	2000	4500	9000	
PE3W02621	Custom Lengths Available	Insertion Loss (Typ.)	0.23	0.31	0.508	0.759	1.122	dB/ft	
			0.74	1.01	1.67	2.5	3.69	dB/m	
PE3W02621-6	6 inch	Insertion Loss (Typ.)	0.32	0.36	0.46	0.58	0.77	dB	0.028
PE3W02621-9	9 inch	Insertion Loss (Typ.)	0.37	0.43	0.59	0.77	1.05	dB	0.031
PE3W02621-12	12 inch	Insertion Loss (Typ.)	0.43	0.51	0.71	0.96	1.33	dB	0.033
PE3W02621-24	24 inch	Insertion Loss (Typ.)	0.65	0.82	1.22	1.72	2.45	dB	0.045
PE3W02621-36	36 inch	Insertion Loss (Typ.)	0.88	1.12	1.73	2.48	3.57	dB	0.056

The insertion loss data for the base model does not include loss due to the connectors. Each length includes insertion loss due to the connectors.

Loss due to Connector 1:	0.1 dB
Loss due to Connector 2:	0.1 dB
Base Weight:	0.033 pounds
Additional Weight per Inch:	0.00092 pounds

Mechanical Specifications

Cable Assembly

Width/Diameter	0.5 in [12.7 mm]
Weight	0.033 lbs [14.97 g]

Cable

Cable Type	PE-SR405FL
Impedance	50 Ohms
Inner Conductor Type	Solid
Inner Conductor Material and Plating	Copper Clad Steel, Silver
Dielectric Type	PTFE
Number of Shields	1
Outer Conductor 1 Material and Plating	Copper, Tin
Repeated Minimum Bend Radius	0.78 in [19.81 mm]

SMA Male to SMA Male Cable Using PE-SR405FL Coax



PE3W02621

Connectors

Description	Connector 1	Connector 2
Type	SMA Male	SMA Male
Specification	MIL-STD-348A	MIL-STD-348A
Impedance	50 Ohms	50 Ohms
Configuration	Straight	Straight
Contact Material and Plating	Brass, Gold	Brass, Gold
Contact Plating Specification	50µin. minimum	50µin. minimum
Dielectric Type	Teflon	Teflon
Body Material and Plating	Brass, Gold	Brass, Gold
Body Plating Specification	3µin. minimum	3µin. minimum
Coupling Nut Material and Plating	Brass, Gold	Brass, Gold
Coupling Nut Plating Specification	3µin. minimum	3µin. minimum
Hex Size	5/16 Inch	5/16 Inch
Torque	3 in-lbs 0.34 Nm	3 in-lbs 0.34 Nm

Environmental Specifications

Compliance Certifications (see [product page](#) for current document)

Plotted and Other Data

Notes:

SMA Male to SMA Male Cable Using PE-SR405FL Coax



PE3W02621

Typical Performance Data

How to Order

Part Number Configuration:

PE3W02621

- **xx**

uu

Unit of Measure:

cm = Centimeters

<blank> = Inches

Length

Base Number

Example: PE3W02621-12 = 12 inches long cable
PE3W02621-100cm = 100 cm long cable

SMA Male to SMA Male Cable Using PE-SR405FL Coax from Pasternack Enterprises has same day shipment for domestic and International orders. Our RF, microwave and millimeter wave products maintain a 99.4% availability and are part of the broadest selection in the industry.

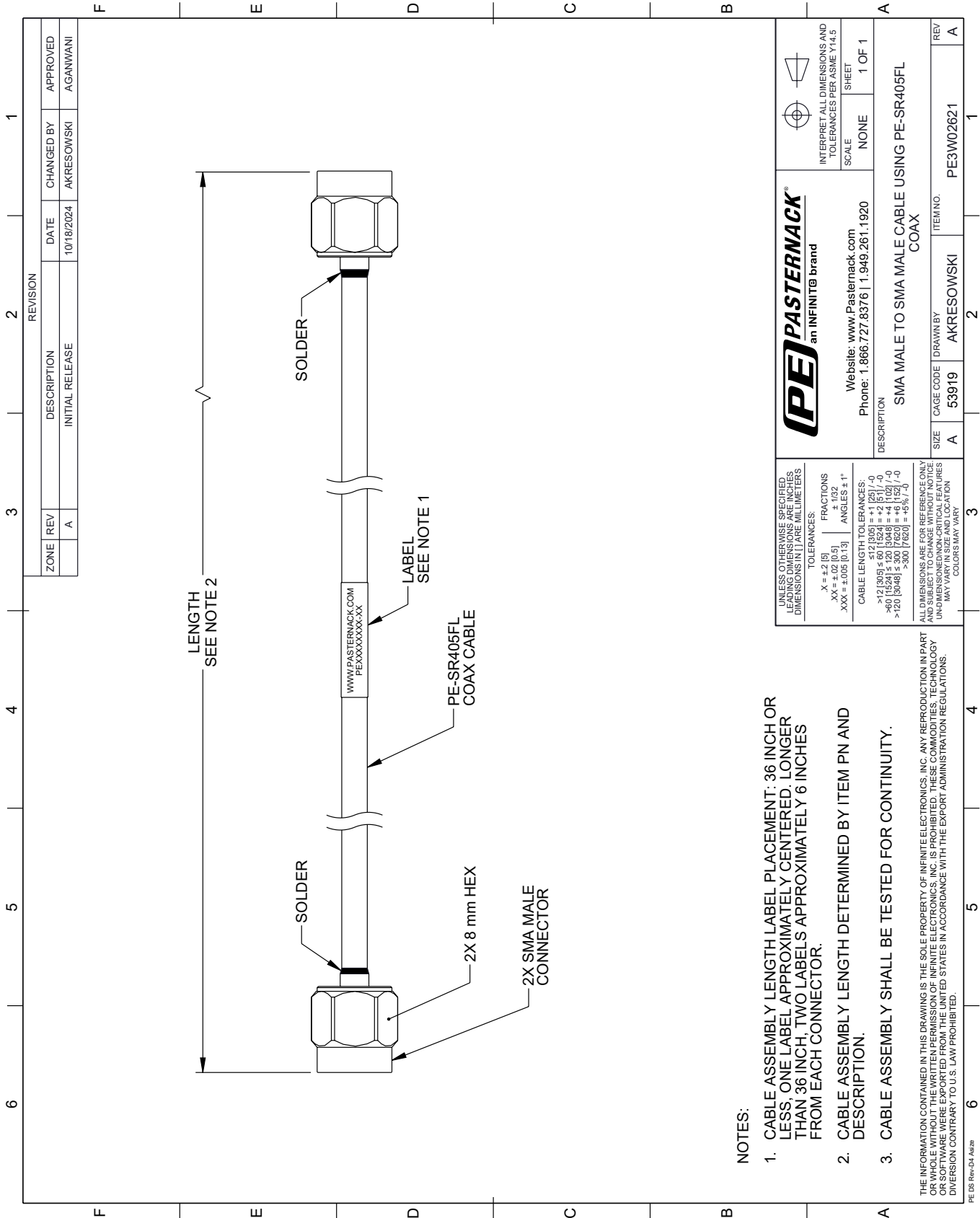
Click the following link (or enter part number in "SEARCH" on website) to obtain additional part information including price, inventory and certifications: [SMA Male to SMA Male Cable Using PE-SR405FL Coax PE3W02621](#)

URL: <https://www.pasternack.com/sma-male-to-sma-male-cable-using-pe-sr405fl-pe3w02621-p.aspx>

The information contained within this document is accurate to the best of our knowledge and representative of the part described herein. It may be necessary to make modifications to the part and/or the documentation of the part in order to implement improvements. Pasternack Enterprises reserves the right to make such changes as required. Unless otherwise stated, all specifications are nominal. Pasternack Enterprises does not make any representation or warranty regarding the suitability of the part described herein for any particular purpose, and Pasternack Enterprises does not assume liability arising out of the use of any part or document.

PE3W02621 CAD Drawing

SMA Male to SMA Male Cable Using PE-SR405FL Coax



NOTES:

1. CABLE ASSEMBLY LENGTH LABEL PLACEMENT: 36 INCH OR LESS, ONE LABEL APPROXIMATELY CENTERED. LONGER THAN 36 INCH, TWO LABELS APPROXIMATELY 6 INCHES FROM EACH CONNECTOR.
2. CABLE ASSEMBLY LENGTH DETERMINED BY ITEM PN AND DESCRIPTION.
3. CABLE ASSEMBLY SHALL BE TESTED FOR CONTINUITY.

ALL DIMENSIONS ARE FOR REFERENCE ONLY. UNLESS OTHERWISE SPECIFIED, LEADING DIMENSIONS ARE IN INCHES. DIMENSIONS IN [] ARE MILLIMETERS.

TOLERANCES:

.X = ±.2 [5]	FRACTIONS	±.132
.XX = ±.02 [0.5]		±.132
.XXX = ±.005 [0.13]	ANGLES ± 1°	

CABLE LENGTH TOLERANCES:

< 12 [305]	±.60 [15.24]	±.1 [2.54]
> 12 [305] ≤ 60 [1524]	±.2 [5.1]	±.1 [2.54]
> 60 [1524] ≤ 120 [3048]	±.4 [10.2]	±.1 [2.54]
> 120 [3048]	±.8 [20.3]	±.1 [2.54]

ALL DIMENSIONS ARE FOR REFERENCE ONLY. UNLESS OTHERWISE SPECIFIED, LEADING DIMENSIONS ARE IN INCHES. DIMENSIONS IN [] ARE MILLIMETERS. UNLESS OTHERWISE SPECIFIED, LEADING DIMENSIONS ARE IN INCHES. DIMENSIONS IN [] ARE MILLIMETERS. UNLESS OTHERWISE SPECIFIED, LEADING DIMENSIONS ARE IN INCHES. DIMENSIONS IN [] ARE MILLIMETERS.

UNLESS OTHERWISE SPECIFIED, LEADING DIMENSIONS ARE IN INCHES. DIMENSIONS IN [] ARE MILLIMETERS.

UNLESS OTHERWISE SPECIFIED, LEADING DIMENSIONS ARE IN INCHES. DIMENSIONS IN [] ARE MILLIMETERS.

PE PASTERNAK
an INFINITI[®] brand

Website: www.Pasternack.com
Phone: 1.866.727.8376 | 1.949.261.1920

INTERPRET ALL DIMENSIONS AND TOLERANCES PER ASME Y14.5

SCALE: NONE

SHEET: 1 OF 1

DESCRIPTION: SMA MALE TO SMA MALE CABLE USING PE-SR405FL COAX

SIZE: A	CAGE CODE: 53919	DRAWN BY: AKRESOWSKI	ITEM NO.: PE3W02621
REV: A			