

## SMA Male Right Angle to N Male Right Angle Cable Using RG400 Coax



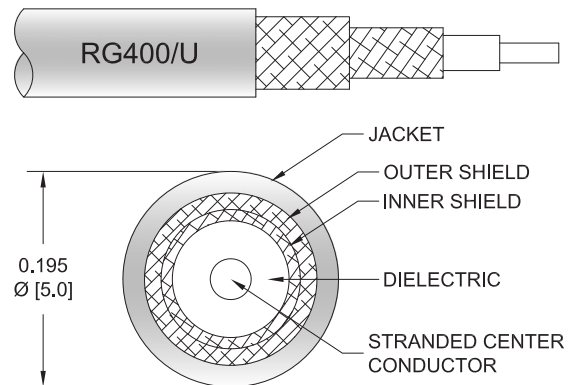
### PE3W03068

#### Configuration

- Connector 1: SMA Male Right Angle
- Connector 2: N Male Right Angle
- Cable Type: RG400
- Coax Flex Type: Flexible

#### Features

- Max Frequency 1 GHz
- 70% Phase Velocity
- Double Shielded
- FEP Jacket



#### Applications

- General Purpose
- Laboratory Use

#### Description

Pasternack's PE3W03068 SMA male right angle to type N male right angle cable using RG400 coax is part of our full line of RF components available for same-day shipping. Pasternack's flexible RF cable assemblies are ideal for applications where tight bends and flexure are required. This Pasternack SMA to type N cable assembly has a male to male gender configuration with 50 ohm flexible RG400 coax. The PE3W03068 SMA male to type N male cable assembly operates to 1 GHz. The right angle SMA and right angle type N interfaces on the RG400 cable allow for easier connections in tight spaces. The double shielding of this Pasternack cable assembly provides excellent shielding effectiveness.

Custom versions of most RF cable assemblies can be built and shipped same day. Custom cable assembly lengths can be obtained by specifying the desired length on the web site at time of order or by contacting a sales representative. Other available RF cable assembly value added services include connector orientation or clocking, heat shrink booting and custom labeling. RF testing can also be performed to document the electrical performance of your cable assembly.

#### Electrical Specifications

Description	Minimum	Typical	Maximum	Units
Frequency Range	DC		1	GHz
VSWR			1.4:1	
Velocity of Propagation		70		%
Capacitance		32 [104.99]		pF/ft [pF/m]
Operating Voltage (AC)			500	Vrms

#### Specifications by Frequency

## SMA Male Right Angle to N Male Right Angle Cable Using RG400 Coax



### PE3W03068

Part Number	Length	Description	F1	F2	F3	Units	Weight (lbs)
		Frequency	400	500	1000	MHz	
PE3W03068	Custom Lengths Available	Insertion Loss (Typ.)	0.09	0.099	0.147	dB/ft	
			0.3	0.33	0.49	dB/m	
PE3W03068-6	6 In	Insertion Loss (Typ.)	0.45	0.45	0.48	dB	0.155
PE3W03068-12	12 In	Insertion Loss (Typ.)	0.49	0.5	0.55	dB	0.176
PE3W03068-24	24 In	Insertion Loss (Typ.)	0.58	0.6	0.7	dB	0.218
PE3W03068-36	36 In	Insertion Loss (Typ.)	0.67	0.7	0.85	dB	0.26
PE3W03068-72	72 In	Insertion Loss (Typ.)	0.94	1	1.29	dB	0.386

The insertion loss data for the base model does not include loss due to the connectors. Each length includes insertion loss due to the connectors.

Loss due to Connector 1:	0.2 dB
Loss due to Connector 2:	0.2 dB
Base Weight:	0.176 pounds
Additional Weight per Inch:	0.0035 pounds

### Mechanical Specifications

#### Cable Assembly

Width/Diameter	0.5 in [12.7 mm]
Weight	0.176 lbs [79.83 g]

#### Cable

Cable Type	RG400
Impedance	50 Ohms
Inner Conductor Type	Stranded
Inner Conductor Material and Plating	Copper, Silver
Dielectric Type	PTFE
Number of Shields	2
Shield Layer 1	Silver Plated Copper Braid
Shield Layer 2	Silver Plated Copper Braid
Jacket Material	FEP, Tan
Jacket Diameter	0.195 in [4.95 mm]
Repeated Minimum Bend Radius	1 in [25.4 mm]

## SMA Male Right Angle to N Male Right Angle Cable Using RG400 Coax



### PE3W03068

#### Connectors

Description	Connector 1	Connector 2
Type	SMA Male Right Angle	N Male Right Angle
Specification	MIL-STD-348A	MIL-STD-348A
Impedance	50 Ohms	50 Ohms
Configuration	Right Angle	Right Angle
Contact Material and Plating	Brass, Gold	Brass, Gold
Contact Plating Specification	50 µin minimum	30 µin minimum
Dielectric Type	PTFE	PTFE
Body Material and Plating	Brass, Nickel	Brass, Nickel
Body Plating Specification	100 µin minimum	100 µin minimum
Coupling Nut Material and Plating	Brass, Nickel	Brass, Nickel
Coupling Nut Plating Specification	100 µin minimum	100 µin minimum
Hex Size	16-May inch	
Torque	3 in-lbs 0.34 Nm	

#### Environmental Specifications

Operating Range Temperature -55 to +165 deg C

**Compliance Certifications** (see [product page](#) for current document)

#### Plotted and Other Data

Notes:

## SMA Male Right Angle to N Male Right Angle Cable Using RG400 Coax



### PE3W03068

#### Typical Performance Data

#### How to Order

Part Number Configuration:

**PE3W03068**

- **xx**

**uu**

Unit of Measure:

cm = Centimeters

<blank> = Inches

Length

Base Number

Example: PE3W03068-12 = 12 inches long cable  
PE3W03068-100cm = 100 cm long cable

SMA Male Right Angle to N Male Right Angle Cable Using RG400 Coax from Pasternack Enterprises has same day shipment for domestic and International orders. Our RF, microwave and millimeter wave products maintain a 99.4% availability and are part of the broadest selection in the industry.

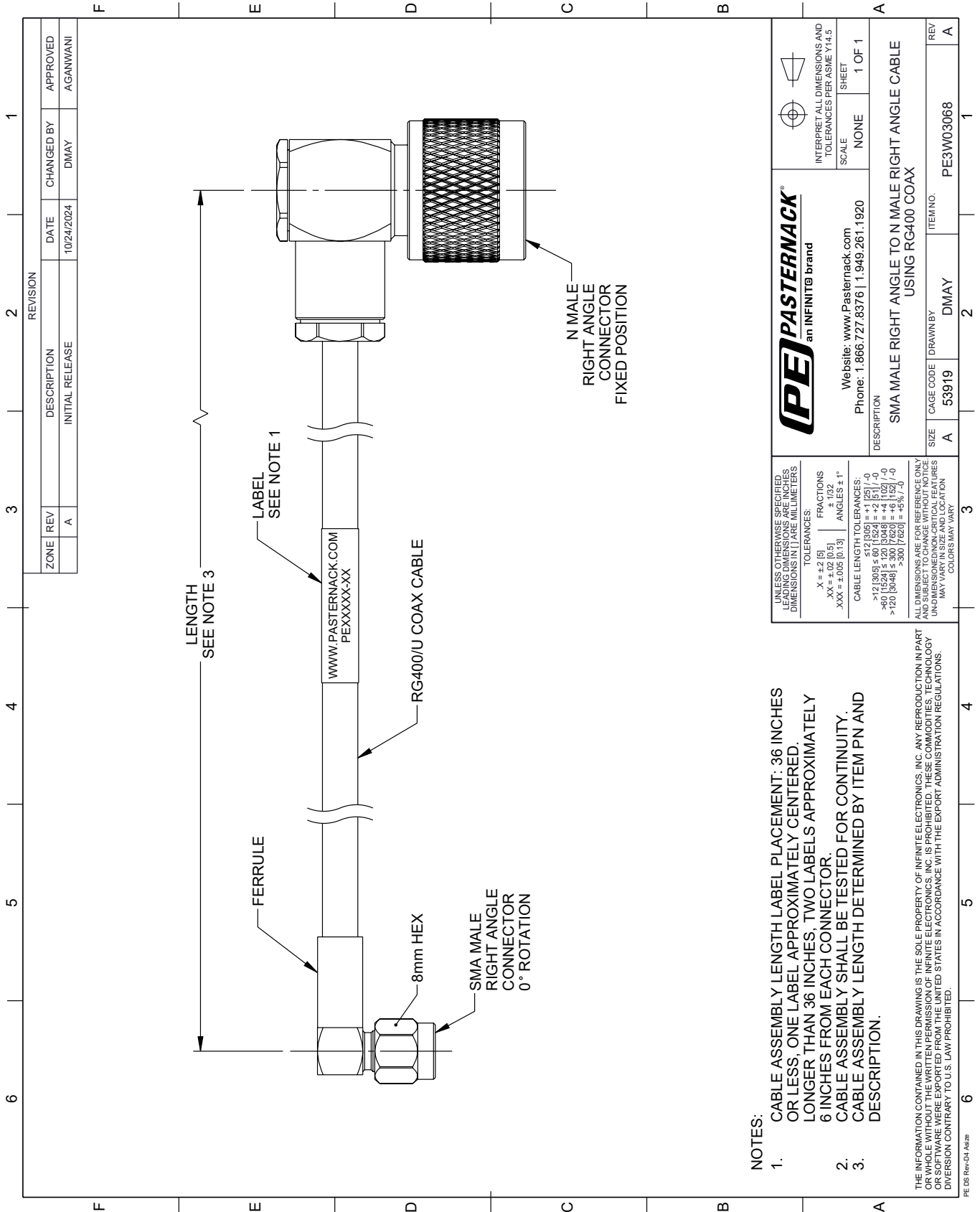
Click the following link (or enter part number in "SEARCH" on website) to obtain additional part information including price, inventory and certifications: [SMA Male Right Angle to N Male Right Angle Cable Using RG400 Coax PE3W03068](https://www.pasternack.com/sma-male-right-angle-to-n-male-right-angle-cable-using-rg400-coax-pe3w03068)

URL: <https://www.pasternack.com/sma-male-right-angle-to-n-male-cable-using-rg400-pe3w03068-p.aspx>

The information contained within this document is accurate to the best of our knowledge and representative of the part described herein. It may be necessary to make modifications to the part and/or the documentation of the part in order to implement improvements. Pasternack Enterprises reserves the right to make such changes as required. Unless otherwise stated, all specifications are nominal. Pasternack Enterprises does not make any representation or warranty regarding the suitability of the part described herein for any particular purpose, and Pasternack Enterprises does not assume liability arising out of the use of any part or document.

# PE3W03068 CAD Drawing

SMA Male Right Angle to N Male Right Angle Cable Using RG400 Coax



**NOTES:**

1. CABLE ASSEMBLY LENGTH LABEL PLACEMENT: 36 INCHES OR LESS, ONE LABEL APPROXIMATELY CENTERED, LONGER THAN 36 INCHES, TWO LABELS APPROXIMATELY 6 INCHES FROM EACH CONNECTOR.
2. CABLE ASSEMBLY SHALL BE TESTED FOR CONTINUITY.
3. CABLE ASSEMBLY LENGTH DETERMINED BY ITEM PN AND DESCRIPTION.

THE INFORMATION CONTAINED IN THIS DRAWING IS THE SOLE PROPERTY OF INFINITE ELECTRONICS, INC. ANY REPRODUCTION IN PART OR WHOLE WITHOUT THE WRITTEN PERMISSION OF INFINITE ELECTRONICS, INC. IS PROHIBITED. THESE COMMODITIES, TECHNOLOGY OR SERVICES WERE EXPORTED FROM THE UNITED STATES IN ACCORDANCE WITH THE EXPORT ADMINISTRATION REGULATIONS. DIVISION CONTRARY TO U.S. LAW PROHIBITED.

PE DS Rev-D4 Add2

REVISION		DATE	CHANGED BY	APPROVED
ZONE	REV			
	A	10/24/2024	DMAY	AGANWANI
DESCRIPTION				
INITIAL RELEASE				

Website: <a href="http://www.Pasternack.com">www.Pasternack.com</a> Phone: 1.866.727.8376   1.949.281.1920		SCALE	NONE
INTERPRET ALL DIMENSIONS AND TOLERANCES PER ASME Y14.5		SHEET	1 OF 1
SMA MALE RIGHT ANGLE TO N MALE RIGHT ANGLE CABLE USING RG400 COAX			
DESCRIPTION	SIZE	CAGE CODE	ITEM NO.
	A	53919	PE3W03068
DRAWN BY		REV	
DMAY		A	

UNLESS OTHERWISE SPECIFIED, LEADING DIMENSIONS ARE IN INCHES. DIMENSIONS IN [ ] ARE MILLIMETERS.

TOLERANCES:

.X = ±.2 [5]	FRACTIONS
.XX = ±.02 [0.5]	± 1/32
.XXX = ±.005 [0.13]	ANGLES ± 1°

CABLE LENGTH TOLERANCES:

>12 [305] ≤ 60 [1524] = ±1 [25] / -0
>60 [1524] ≤ 120 [3048] = ±4 [102] / -0
>120 [3048] ≤ 300 [7620] = ±5% / -0

ALL DIMENSIONS ARE FOR REFERENCE ONLY. UNDIMENSIONED/NON-CRITICAL FEATURES MAY VARY IN SIZE AND LOCATION. COLORS MAY VARY.