

75 Ohm Push-On MCX Plug Right Angle to 75 Ohm BNC Female Bulkhead Cable Using 75 Ohm RG179 Coax



PE3W03663

Configuration

- Connector 1: Push-On MCX Plug Right Angle
- Connector 2: BNC Female Bulkhead
- Cable Type: RG179
- Coax Flex Type: Flexible

Features

- 70% Phase Velocity
- FEP Jacket

Applications

- General Purpose
- Laboratory Use

Description

Pasternack's PE3W03663 75 ohm MCX plug push-on right angle to 75 ohm BNC female bulkhead cable using 75 ohm RG179 coax is part of our full line of RF components available for same-day shipping. Pasternack's flexible RF cable assemblies are ideal for applications where tight bends and flexure are required. This Pasternack MCX to BNC cable assembly has a plug to female gender configuration with 75 ohm flexible RG179 coax. The right angle MCX interface on the RG179 cable allows for easier connections in tight spaces. Our RF cable assembly with BNC bulkhead interface allows designers to create external connections on their product enclosures, and can be used in a variety of other rack mount and panel mount applications.

Custom versions of most RF cable assemblies can be built and shipped same day. Custom cable assembly lengths can be obtained by specifying the desired length on the web site at time of order or by contacting a sales representative. Other available RF cable assembly value added services include connector orientation or clocking, heat shrink booting and custom labeling. RF testing can also be performed to document the electrical performance of your cable assembly.

Electrical Specifications

Description	Minimum	Typical	Maximum	Units
Velocity of Propagation		70		%
Capacitance		19.4 [63.65]		pF/ft [pF/m]

Mechanical Specifications

Cable Assembly

Weight 0.069 lbs [31.3 g]

Cable

Cable Type RG179
 Impedance 75 Ohms
 Inner Conductor Type Stranded
 Inner Conductor Material and Plating Copper Clad Steel, Silver
 Dielectric Type PTFE
 Number of Shields 1
 Shield Layer 1 Silver Plated Copper Braid

75 Ohm Push-On MCX Plug Right Angle to 75 Ohm BNC Female Bulkhead Cable Using 75 Ohm RG179 Coax



PE3W03663

Jacket Material	FEP, Tan
Jacket Diameter	0.1 in [2.54 mm]
Repeated Minimum Bend Radius	0.4 in [10.16 mm]

Connectors

Description	Connector 1	Connector 2
Type	MCX Plug Right Angle	BNC Female Bulkhead
Specification	MIL-C-39012	
Impedance	75 Ohms	75 Ohms
Configuration	Right Angle	Straight
Connection Method	Push-On	
Contact Material and Plating	Brass, Gold	
Dielectric Type	PTFE	
Outer Conductor Material and Plating	Beryllium Copper, Gold	
Body Material and Plating	Brass, Gold	Brass, Nickel

Environmental Specifications

Compliance Certifications (see [product page](#) for current document)

Plotted and Other Data

Notes:

75 Ohm Push-On MCX Plug Right Angle to 75 Ohm BNC Female Bulkhead Cable Using 75 Ohm RG179 Coax



PE3W03663

Typical Performance Data

How to Order

Part Number Configuration:

PE3W03663

- **xx**

uu

Unit of Measure:
cm = Centimeters
<blank> = Inches
Length
Base Number

Example: PE3W03663-12 = 12 inches long cable
PE3W03663-100cm = 100 cm long cable

75 Ohm Push-On MCX Plug Right Angle to 75 Ohm BNC Female Bulkhead Cable Using 75 Ohm RG179 Coax from Pasternack Enterprises has same day shipment for domestic and International orders. Our RF, microwave and millimeter wave products maintain a 99.4% availability and are part of the broadest selection in the industry.

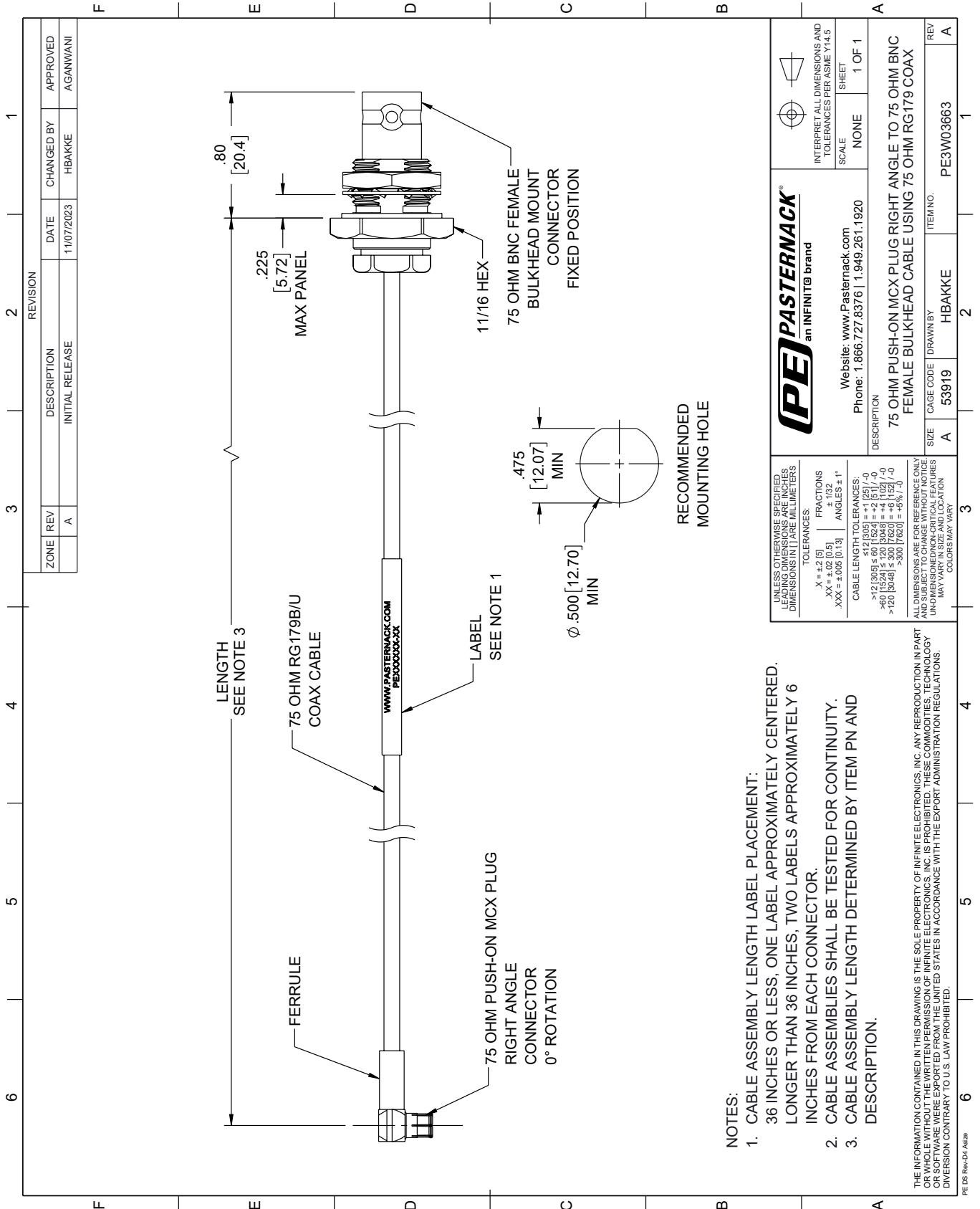
Click the following link (or enter part number in "SEARCH" on website) to obtain additional part information including price, inventory and certifications: [75 Ohm Push-On MCX Plug Right Angle to 75 Ohm BNC Female Bulkhead Cable Using 75 Ohm RG179 Coax PE3W03663](https://www.pasternack.com/75-ohm-push-on-mcx-plug-right-angle-to-75-ohm-bnc-female-bulkhead-cable-using-rg179-pe3w03663-p.aspx)

URL: <https://www.pasternack.com/75-ohm-push-on-mcx-plug-right-angle-to-75-ohm-bnc-female-bulkhead-cable-using-rg179-pe3w03663-p.aspx>

The information contained within this document is accurate to the best of our knowledge and representative of the part described herein. It may be necessary to make modifications to the part and/or the documentation of the part in order to impliment improvements. Pasternack Enterprises reserves the right to make such changes as required. Unless otherwise stated, all specifications are nominal. Pasternack Enterprises does not make any representation or warranty regarding the suitability of the part described herein for any particular purpose, and Pasternack Enterprises does not assume liability arising out of the use of any part or document.

PE3W03663 CAD Drawing

75 Ohm Push-On MCX Plug Right Angle to 75 Ohm BNC Female Bulkhead Cable Using 75 Ohm RG179 Coax



PE PASTERNAK an INFINITI® brand		INTERPRET ALL DIMENSIONS AND TOLERANCES PER ASME Y14.5 SCALE: NONE SHEET: 1 OF 1	
Website: www.Pasternack.com Phone: 1.866.727.8376 1.949.281.1920		DESCRIPTION: 75 OHM PUSH-ON MCX PLUG RIGHT ANGLE TO 75 OHM BNC FEMALE BULKHEAD CABLE USING 75 OHM RG179 COAX	
UNLESS OTHERWISE SPECIFIED, LEADING DIMENSIONS ARE IN INCHES, DIMENSIONS IN [] ARE MILLIMETERS.	TOLERANCES: .X = ±.2 [5] .XX = ±.02 [0.5] .XXX = ±.005 [0.13]	FRACTIONS: ± 1/32 ANGLES ± 1°	CABLE LENGTH TOLERANCES: <12 [305] ≤ 60 [1524] = ±.1 [2.5] / -0 >60 [1524] ≤ 120 [3048] = ±.4 [102] / -0 >120 [3048] ≤ 300 [7620] = ±.6 [15.2] / -0 >300 [7620] = ±.8 [20.3] / -0
ALL DIMENSIONS ARE FOR REFERENCE ONLY. UNLESS OTHERWISE SPECIFIED, DIMENSIONS ARE IN INCHES. DIMENSIONS IN [] ARE MILLIMETERS. UNLESS OTHERWISE SPECIFIED, LEADING DIMENSIONS ARE IN INCHES, DIMENSIONS IN [] ARE MILLIMETERS.		ALL DIMENSIONS ARE FOR REFERENCE ONLY. UNLESS OTHERWISE SPECIFIED, DIMENSIONS ARE IN INCHES. DIMENSIONS IN [] ARE MILLIMETERS. UNLESS OTHERWISE SPECIFIED, LEADING DIMENSIONS ARE IN INCHES, DIMENSIONS IN [] ARE MILLIMETERS.	
ZONE REV A	DESCRIPTION INITIAL RELEASE	DATE 11/07/2023	CHANGED BY HBAKKE
APPROVED AGANWANI	REVISION		
SIZE A	CAGE CODE 53919	DRAWN BY HBAKKE	ITEM NO. PE3W03663

- NOTES:
- CABLE ASSEMBLY LENGTH LABEL PLACEMENT: 36 INCHES OR LESS, ONE LABEL APPROXIMATELY CENTERED, LONGER THAN 36 INCHES, TWO LABELS APPROXIMATELY 6 INCHES FROM EACH CONNECTOR.
 - CABLE ASSEMBLIES SHALL BE TESTED FOR CONTINUITY.
 - CABLE ASSEMBLY LENGTH DETERMINED BY ITEM PN AND DESCRIPTION.

THE INFORMATION CONTAINED IN THIS DRAWING IS THE SOLE PROPERTY OF INFINITE ELECTRONICS, INC. ANY REPRODUCTION IN PART OR WHOLE WITHOUT THE WRITTEN PERMISSION OF INFINITE ELECTRONICS, INC. IS PROHIBITED. THESE COMMODITIES, TECHNOLOGY OR SOFTWARE WERE EXPORTED FROM THE UNITED STATES IN ACCORDANCE WITH THE EXPORT ADMINISTRATION REGULATIONS. DIVISION CONTRARY TO U.S. LAW PROHIBITED.