

SMA Female Bulkhead to SMA Male Right Angle Cable Using PE-SR405FLJ Coax

PE3W03864



Configuration

- Connector 1: SMA Female Bulkhead
- Connector 2: SMA Male Right Angle
- Cable Type: PE-SR405FLJ
- Coax Flex Type: Formable

Features

- Max Frequency 10 GHz
- Shielding Effectivity > 100 dB
- 69.5% Phase Velocity
- FEP Jacket



Applications

- General Purpose
- Laboratory Use

Description

Pasternack's PE3W03864 SMA female bulkhead to SMA male right angle cable using PE-SR405FLJ coax is part of our full line of RF components available for same-day shipping. Pasternack's formable RF cable assemblies provide an alternative to costly pre-formed semi-rigid assemblies since they are hand formable. This Pasternack SMA to SMA cable assembly has a female to male gender configuration with 50 ohm formable PE-SR405FLJ coax. The PE3W03864 SMA female to SMA male cable assembly operates to 10 GHz. The right angle SMA interface on the PE-SR405FLJ cable allows for easier connections in tight spaces. Our RF cable assembly with SMA bulkhead interface allows designers to create external connections on their product enclosures, and can be used in a variety of other rack mount and panel mount applications.

Custom versions of most RF cable assemblies can be built and shipped same day. Custom cable assembly lengths can be obtained by specifying the desired length on the web site at time of order or by contacting a sales representative. Other available RF cable assembly value added services include connector orientation or clocking, heat shrink booting and custom labeling. RF testing can also be performed to document the electrical performance of your cable assembly.

Electrical Specifications

Description	Minimum	Typical	Maximum	Units
Frequency Range	DC		10	GHz
VSWR			1.4:1	
Velocity of Propagation		69.5		%
RF Shielding	100			dB
Group Delay		1.43 [4.69]		ns/ft [ns/m]
Capacitance		29 [95.14]		pF/ft [pF/m]
DC Resistance Inner Conductor		65.7 [215.55]		Ohms/1000ft [Ohms/Km]
DC Resistance Outer Conductor		10.2 [33.46]		Ohms/1000ft [Ohms/Km]

Specifications by Frequency

SMA Female Bulkhead to SMA Male Right Angle Cable Using PE-SR405FLJ Coax



PE3W03864

Part Number	Length	Description	F1	F2	F3	F4	F5	Units	Weight (lbs)
		Frequency	500	1000	2500	5000	10000	MHz	
PE3W03864	Custom Lengths Available	Insertion Loss (Typ.)	0.15	0.225	0.363	0.594	0.812	dB/ft	
			0.5	0.74	1.2	1.95	2.67	dB/m	
PE3W03864-6	6 inch	Insertion Loss (Typ.)	0.88	0.92	0.99	1.1	1.21	dB	0.03
PE3W03864-9	9 inch	Insertion Loss (Typ.)	0.92	0.97	1.08	1.25	1.41	dB	0.034
PE3W03864-12	12 inch	Insertion Loss (Typ.)	0.95	1.03	1.17	1.4	1.62	dB	0.037
PE3W03864-18	18 inch	Insertion Loss (Typ.)	1.03	1.14	1.35	1.7	2.02	dB	0.045
PE3W03864-24	24 inch	Insertion Loss (Typ.)	1.1	1.25	1.53	1.99	2.43	dB	0.052

The insertion loss data for the base model does not include loss due to the connectors. Each length includes insertion loss due to the connectors.

Loss due to Connector 1: 0.6 dB
 Loss due to Connector 2: 0.2 dB
 Base Weight: 0.037 pounds
 Additional Weight per Inch: 0.00117 pounds

Mechanical Specifications

Cable Assembly

Weight 0.037 lbs [16.78 g]

Cable

Cable Type PE-SR405FLJ
 Impedance 50 Ohms
 Inner Conductor Type Solid
 Inner Conductor Material and Plating Copper Clad Steel, Silver
 Dielectric Type PTFE
 Number of Shields 1
 Outer Conductor 1 Material and Plating Tinned Copper Composite Braid
 Jacket Material FEP, Black
 Jacket Diameter 0.105 in [2.67 mm]
 One Time Minimum Bend Radius 0.5 in [12.7 mm]
 Repeated Minimum Bend Radius 0.787 in [19.99 mm]

SMA Female Bulkhead to SMA Male Right Angle Cable Using PE-SR405FLJ Coax

PE3W03864



Connectors

Description	Connector 1	Connector 2
Type	SMA Female Bulkhead	SMA Male Right Angle
Specification		MIL-STD-348A
Impedance	50 Ohms	50 Ohms
Configuration	Straight	Right Angle
Contact Material and Plating	Beryllium Copper, Gold over Nickel	Brass, Gold
Contact Plating Specification		50 µin minimum
Dielectric Type	PTFE	PTFE
Body Material and Plating	Brass, Gold over Nickel	Stainless Steel, Gold
Body Plating Specification		30 µin minimum
Coupling Nut Material and Plating		Brass, Nickel
Coupling Nut Plating Specification		100 µin minimum
Hex Size		5/16 inch
Torque		3 in-lbs 0.34 Nm

Environmental Specifications

Compliance Certifications (see [product page](#) for current document)

Plotted and Other Data

Notes:

SMA Female Bulkhead to SMA Male Right Angle Cable Using PE-SR405FLJ Coax



PE3W03864

Typical Performance Data

How to Order

Part Number Configuration:

PE3W03864

- xx

uu

Unit of Measure:
cm = Centimeters
<blank> = Inches

Length
Base Number

Example: PE3W03864-12 = 12 inches long cable
PE3W03864-100cm = 100 cm long cable

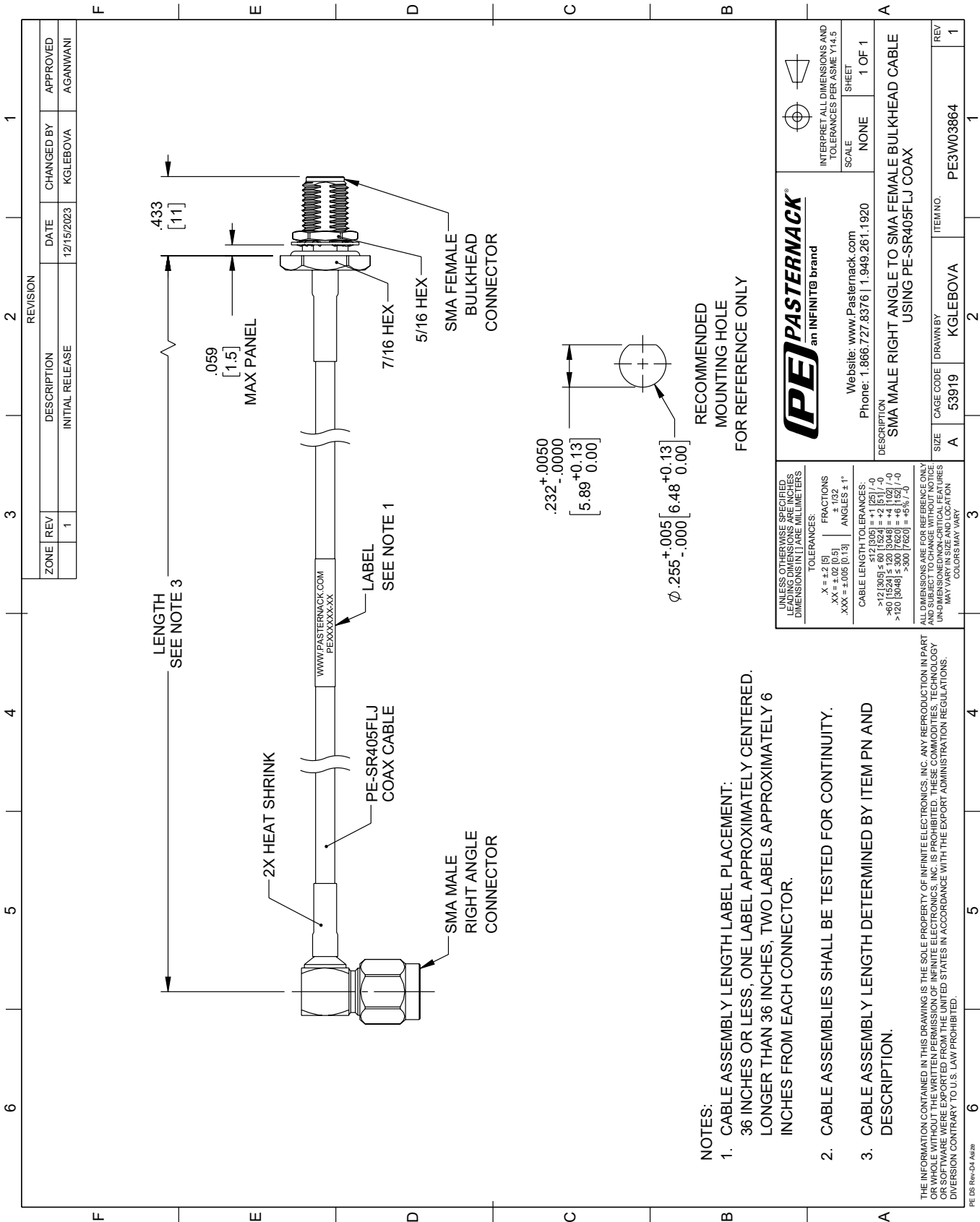
SMA Female Bulkhead to SMA Male Right Angle Cable Using PE-SR405FLJ Coax from Pasternack Enterprises has same day shipment for domestic and International orders. Our RF, microwave and millimeter wave products maintain a 99.4% availability and are part of the broadest selection in the industry.

Click the following link (or enter part number in "SEARCH" on website) to obtain additional part information including price, inventory and certifications: [SMA Female Bulkhead to SMA Male Right Angle Cable Using PE-SR405FLJ Coax PE3W03864](#)

URL: <https://www.pasternack.com/sma-female-bulkhead-to-sma-male-cable-using-pe-sr405flj-pe3w03864-p.aspx>

The information contained within this document is accurate to the best of our knowledge and representative of the part described herein. It may be necessary to make modifications to the part and/or the documentation of the part in order to implement improvements. Pasternack Enterprises reserves the right to make such changes as required. Unless otherwise stated, all specifications are nominal. Pasternack Enterprises does not make any representation or warranty regarding the suitability of the part described herein for any particular purpose, and Pasternack Enterprises does not assume liability arising out of the use of any part or document.

PE3W03864 CAD Drawing
SMA Female Bulkhead to SMA Male Right Angle Cable Using PE-SR405FLJ Coax



- NOTES:
- 1. CABLE ASSEMBLY LENGTH LABEL PLACEMENT: 36 INCHES OR LESS, ONE LABEL APPROXIMATELY CENTERED. LONGER THAN 36 INCHES, TWO LABELS APPROXIMATELY 6 INCHES FROM EACH CONNECTOR.
 - 2. CABLE ASSEMBLIES SHALL BE TESTED FOR CONTINUITY.
 - 3. CABLE ASSEMBLY LENGTH DETERMINED BY ITEM PN AND DESCRIPTION.

UNLESS OTHERWISE SPECIFIED, ALL DIMENSIONS ARE IN INCHES. DIMENSIONS IN [] ARE MILLIMETERS.		PE PASTERNAK an INFINITI® brand		INTERPRET ALL DIMENSIONS AND TOLERANCES PER ASME Y14.5	
TOLERANCES:		Website: www.Pasternack.com		SCALE	
X = ±.2 [5]		Phone: 1.866.727.8376 1.949.281.1920		NONE	
.XX = ±.02 [0.5]				SHEET	
.XXX = ±.005 [0.13]				1 OF 1	
ANGLES ± 1°					
CABLE LENGTH TOLERANCES:		DESCRIPTION			
>12 [305] ≤ 60 [1524] = ±.125 [3.18] / -0		SMA MALE RIGHT ANGLE TO SMA FEMALE BULKHEAD CABLE			
>60 [1524] ≤ 120 [3048] = ±.125 [3.18] / -0		USING PE-SR405FLJ COAX			
>120 [3048] ≤ 300 [7620] = ±.125 [3.18] / -0					
>300 [7620] = ±.125 [3.18] / -0					
ALL DIMENSIONS ARE FOR REFERENCE ONLY. DIMENSIONS MAY VARY IN SIZE AND LOCATION. UNDIMENSIONED/UNCERTAIN FEATURES MAY VARY IN SIZE AND LOCATION. COLORS MAY VARY.		SIZE		REV	
		A		1	
		CAGE CODE		ITEM NO.	
		53919		PE3W03864	
		DRAWN BY			
		KGLEBOVA			