

BNC Female Bulkhead to BNC Female Bulkhead Cable Using RG58 Coax, LF Solder



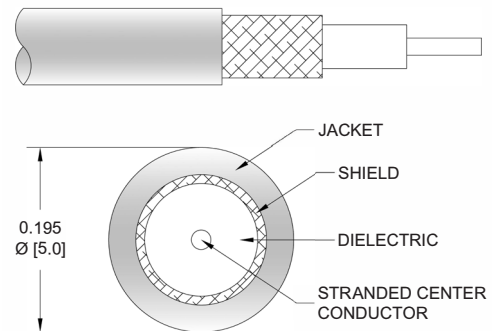
PE3W04158LF

Configuration

- Connector 1: BNC Female Bulkhead
- Connector 2: BNC Female Bulkhead
- Cable Type: RG58
- Coax Flex Type: Flexible

Features

- Max Frequency 2 GHz
- 65.9% Phase Velocity
- PVC (NC) Jacket



Applications

- General Purpose
- Laboratory Use

Description

Pasternack's PE3W04158LF BNC female bulkhead to BNC female bulkhead cable using RG58 coax is part of our full line of RF components available for same-day shipping. Pasternack's flexible RF cable assemblies are ideal for applications where tight bends and flexure are required. This Pasternack BNC to BNC cable assembly has a female to female gender configuration with 50 ohm flexible RG58 coax. The PE3W04158LF BNC female to BNC female cable assembly operates to 2 GHz. Our RF cable assembly with BNC bulkhead interface allows designers to create external connections on their product enclosures, and can be used in a variety of other rack mount and panel mount applications.

Custom versions of most RF cable assemblies can be built and shipped same day. Custom cable assembly lengths can be obtained by specifying the desired length on the web site at time of order or by contacting a sales representative. Other available RF cable assembly value added services include connector orientation or clocking, heat shrink booting and custom labeling. RF testing can also be performed to document the electrical performance of your cable assembly.

Electrical Specifications

Description	Minimum	Typical	Maximum	Units
Frequency Range	DC		2	GHz
VSWR			1.4:1	
Velocity of Propagation		65.9		%
Capacitance		30.8 [101.05]		pF/ft [pF/m]
Operating Voltage (AC)			500	V _{rms}

Specifications by Frequency

BNC Female Bulkhead to BNC Female Bulkhead
Cable Using RG58 Coax, LF Solder



PE3W04158LF

Part Number	Length	Description	F1	F2	F3	F4	F5	Units	Weight (lbs)
			Frequency	50	100	250	500	2000	
PE3W04158LF	Custom Lengths Available	Insertion Loss (Typ.)	0.029	0.049	0.074	0.116	0.3	dB/ft	
			0.1	0.17	0.25	0.39	0.99	dB/m	
PE3W04158LF-12	12 In	Insertion Loss (Typ.)	0.23	0.25	0.28	0.32	0.5	dB	0.12
PE3W04158LF-24	24 In	Insertion Loss (Typ.)	0.26	0.3	0.35	0.44	0.8	dB	0.144
PE3W04158LF-36	36 In	Insertion Loss (Typ.)	0.29	0.35	0.43	0.55	1.1	dB	0.168
PE3W04158LF-48	48 In	Insertion Loss (Typ.)	0.32	0.4	0.5	0.67	1.4	dB	0.192
PE3W04158LF-200CM	200 CM	Insertion Loss (Typ.)	0.4	0.53	0.69	0.97	2.17	dB	0.254

The insertion loss data for the base model does not include loss due to the connectors. Each length includes insertion loss due to the connectors.

Loss due to Connector 1:	0.1 dB
Loss due to Connector 2:	0.1 dB
Base Weight:	0.12 pounds
Additional Weight per Inch:	0.002 pounds

Mechanical Specifications

Cable Assembly

Width/Diameter	0.5 in [12.7 mm]
Weight	0.12 lbs [54.43 g]

Cable

Cable Type	RG58
Impedance	50 Ohms
Inner Conductor Type	Stranded
Inner Conductor Material and Plating	Copper, Tin
Dielectric Type	PE
Number of Shields	1
Shield Layer 1	Tinned Copper Braid
Jacket Material	PVC (NC), Black
Jacket Diameter	0.195 in [4.95 mm]
One Time Minimum Bend Radius	0.98 in [24.89 mm]
Repeated Minimum Bend Radius	1.96 in [49.78 mm]

BNC Female Bulkhead to BNC Female Bulkhead
Cable Using RG58 Coax, LF Solder



PE3W04158LF

Connectors

Description	Connector 1	Connector 2
Type	BNC Female Bulkhead	BNC Female Bulkhead
Specification	MIL-STD-348A	MIL-STD-348A
Impedance	50 Ohms	50 Ohms
Configuration	Straight	Straight
Contact Material and Plating	Brass, Gold	Brass, Gold
Contact Plating Specification	30 µin minimum	30 µin minimum
Dielectric Type	PTFE	PTFE
Body Material and Plating	Brass, Nickel	Brass, Nickel
Body Plating Specification	100 µin minimum	100 µin minimum

Environmental Specifications

Operating Range Temperature -40 to +80 deg C

Compliance Certifications (see [product page](#) for current document)

Plotted and Other Data

Notes:

BNC Female Bulkhead to BNC Female Bulkhead Cable Using RG58 Coax, LF Solder



PE3W04158LF

Typical Performance Data

How to Order

Part Number Configuration:

PE3W04158LF - xx uu

Unit of Measure:
cm = Centimeters
<blank> = Inches
Length
Base Number

Example: PE3W04158LF-12 = 12 inches long cable
PE3W04158LF-100cm = 100 cm long cable

BNC Female Bulkhead to BNC Female Bulkhead Cable Using RG58 Coax, LF Solder from Pasternack Enterprises has same day shipment for domestic and International orders. Our RF, microwave and millimeter wave products maintain a 99.4% availability and are part of the broadest selection in the industry.

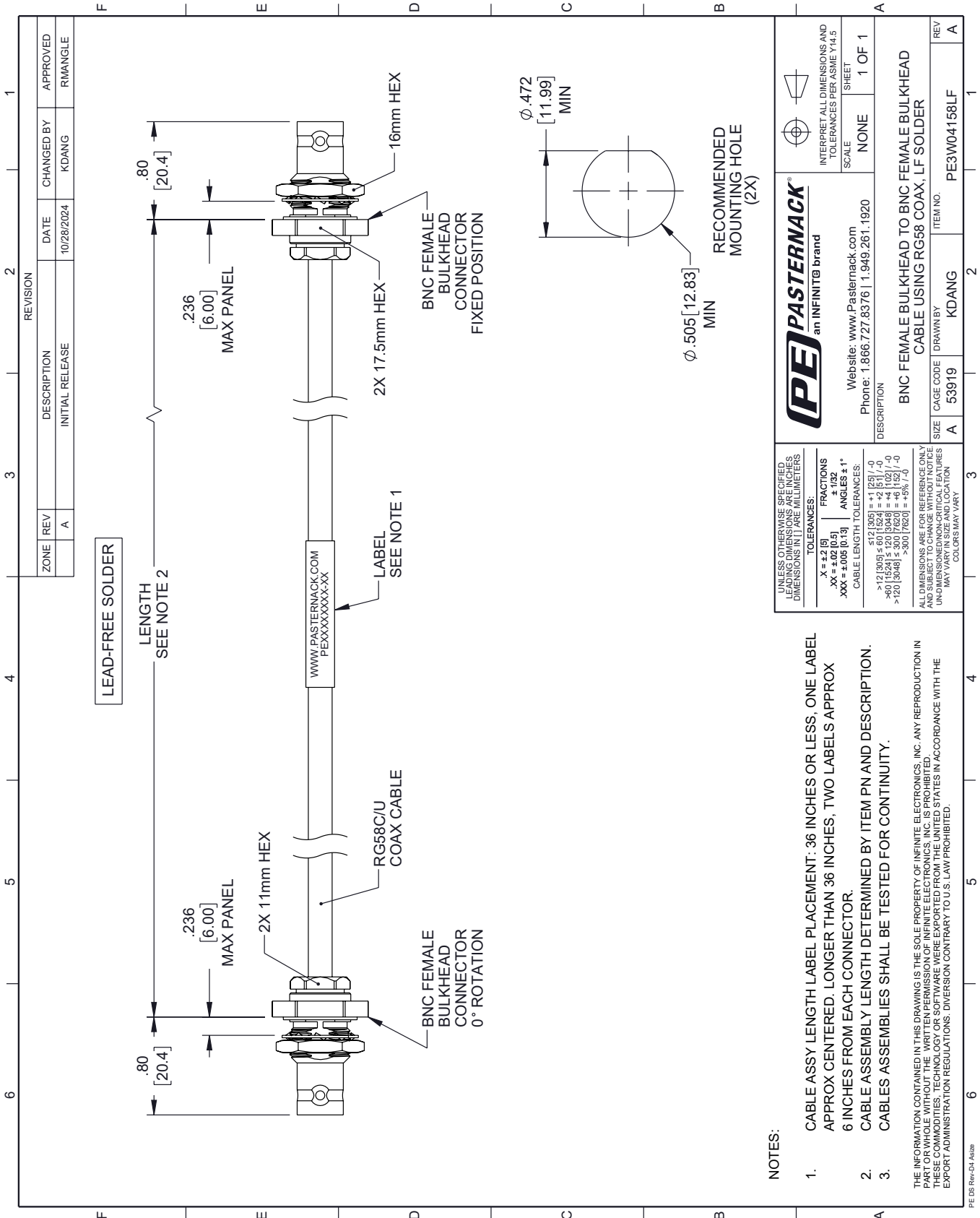
Click the following link (or enter part number in "SEARCH" on website) to obtain additional part information including price, inventory and certifications: [BNC Female Bulkhead to BNC Female Bulkhead Cable Using RG58 Coax, LF Solder PE3W04158LF](#)

URL: <https://www.pasternack.com/bnc-female-bulkhead-to-bnc-female-bulkhead-cable-using-rg58-lf-solder-pe3w04158lf-p.aspx>

The information contained within this document is accurate to the best of our knowledge and representative of the part described herein. It may be necessary to make modifications to the part and/or the documentation of the part in order to implement improvements. Pasternack Enterprises reserves the right to make such changes as required. Unless otherwise stated, all specifications are nominal. Pasternack Enterprises does not make any representation or warranty regarding the suitability of the part described herein for any particular purpose, and Pasternack Enterprises does not assume liability arising out of the use of any part or document.

PE3W04158LF CAD Drawing

BNC Female Bulkhead to BNC Female Bulkhead Cable Using RG58 Coax, LF Solder



LEAD-FREE SOLDER

LENGTH
SEE NOTE 2

236
[6.00]
MAX PANEL

236
[6.00]
MAX PANEL

2X 11mm HEX

RG58C/U
COAX CABLE

WWW.PASTERNAK.COM
PEXXXXXX-XX

2X 17.5mm HEX

16mm HEX

BNC FEMALE
BULKHEAD
CONNECTOR
FIXED POSITION

BNC FEMALE
BULKHEAD
CONNECTOR
0° ROTATION

0.472
[11.99]
MIN

0.505 [12.83]
MIN

RECOMMENDED
MOUNTING HOLE
(2X)

NOTES:

1. CABLE ASSY LENGTH LABEL PLACEMENT: .36 INCHES OR LESS. ONE LABEL APPROX CENTERED. LONGER THAN .36 INCHES. TWO LABELS APPROX .6 INCHES FROM EACH CONNECTOR.
2. CABLE ASSEMBLY LENGTH DETERMINED BY ITEM PN AND DESCRIPTION.
3. CABLE ASSEMBLIES SHALL BE TESTED FOR CONTINUITY.

THE INFORMATION CONTAINED IN THIS DRAWING IS THE SOLE PROPERTY OF INFINITE ELECTRONICS, INC. ANY REPRODUCTION IN PART OR WHOLE WITHOUT THE WRITTEN PERMISSION OF INFINITE ELECTRONICS, INC. IS PROHIBITED. THESE COMMODITIES, TECHNOLOGY OR SOFTWARE WERE EXPORTED FROM THE UNITED STATES IN ACCORDANCE WITH THE EXPORT ADMINISTRATION REGULATIONS. DIVERSION CONTRARY TO U.S. LAW PROHIBITED.

UNLESS OTHERWISE SPECIFIED, LEADING DIMENSIONS ARE IN INCHES. DIMENSIONS IN [] ARE MILLIMETERS.	
TOLERANCES:	FRACTIONS
.X = ±.2 [5]	± 1/32
.XX = ±.02 [0.5]	± .005
.XXX = ±.005 [0.13]	ANGLES ± 1°
CABLE LENGTH TOLERANCES:	
< 12 [305]	± 12 [305]
> 12 [305] ≤ 60 [1524]	± 12 [305]
> 60 [1524] ≤ 120 [3048]	± 12 [305]
> 120 [3048]	± 30 [762]
ALL DIMENSIONS ARE FOR REFERENCE ONLY. UNDIMENSIONED NON-CRITICAL FEATURES MAY VARY IN SIZE AND LOCATION. COLORS MAY VARY.	



Website: www.Pasternack.com
Phone: 1.866.727.8376 | 1.949.261.1920

INTERPRET ALL DIMENSIONS AND TOLERANCES PER ASME Y14.5
SCALE NONE
SHEET 1 OF 1

DESCRIPTION	
BNC FEMALE BULKHEAD TO BNC FEMALE BULKHEAD CABLE USING RG58 COAX, LF SOLDER	
SIZE	ITEM NO.
A 53919	PE3W04158LF
CAGE CODE	REV
KDANG	A