

BNC Male to BNC Male Right Angle Cable Using PE-SR405FLJ Coax



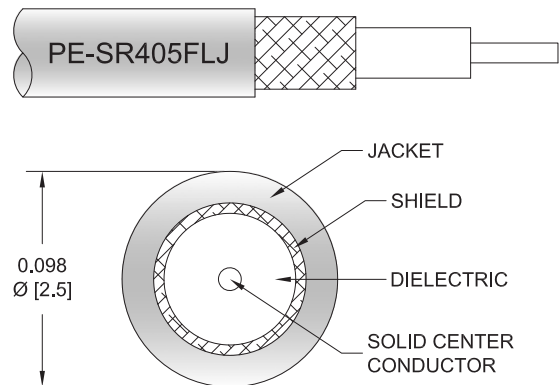
PE3W06205

Configuration

- Connector 1: BNC Male
- Connector 2: BNC Male Right Angle
- Cable Type: PE-SR405FLJ
- Coax Flex Type: Formable

Features

- Shielding Effectivity > 100 dB
- 69.5% Phase Velocity
- FEP Jacket



Applications

- General Purpose
- Laboratory Use

Description

Pasternack's PE3W06205 BNC male to BNC male right angle cable using PE-SR405FLJ coax is part of our full line of RF components available for same-day shipping. Pasternack's formable RF cable assemblies provide an alternative to costly pre-formed semi-rigid assemblies since they are hand formable. This Pasternack BNC to BNC cable assembly has a male to male gender configuration with 50 ohm formable PE-SR405FLJ coax. The right angle BNC interface on the PE-SR405FLJ cable allows for easier connections in tight spaces.

Custom versions of most RF cable assemblies can be built and shipped same day. Custom cable assembly lengths can be obtained by specifying the desired length on the web site at time of order or by contacting a sales representative. Other available RF cable assembly value added services include connector orientation or clocking, heat shrink booting and custom labeling. RF testing can also be performed to document the electrical performance of your cable assembly.

Electrical Specifications

Description	Minimum	Typical	Maximum	Units
Velocity of Propagation		69.5		%
RF Shielding	100			dB
Group Delay		1.43 [4.69]		ns/ft [ns/m]
Capacitance		29 [95.14]		pF/ft [pF/m]
DC Resistance Inner Conductor		65.7 [215.55]		Ohms/1000ft [Ohms/Km]
DC Resistance Outer Conductor		10.2 [33.46]		Ohms/1000ft [Ohms/Km]

Mechanical Specifications

Cable Assembly

Weight 0.065 lbs [29.48 g]

Cable

Cable Type PE-SR405FLJ

BNC Male to BNC Male Right Angle Cable Using PE-SR405FLJ Coax



PE3W06205

Impedance	50 Ohms
Inner Conductor Type	Solid
Inner Conductor Material and Plating	Copper Clad Steel, Silver
Dielectric Type	PTFE
Number of Shields	1
Outer Conductor 1 Material and Plating	Tinned Copper Composite Braid
Jacket Material	FEP, Black
Jacket Diameter	0.105 in [2.67 mm]
One Time Minimum Bend Radius	0.5 in [12.7 mm]
Repeated Minimum Bend Radius	0.787 in [19.99 mm]

Connectors

Description	Connector 1	Connector 2
Type	BNC Male	BNC Male Right Angle
Specification	MIL-STD-348A	MIL-C-39012
Impedance	50 Ohms	50 Ohms
Configuration	Straight	Right Angle
Contact Material and Plating	Brass, Gold	Gold
Contact Plating Specification	30 µin minimum	
Dielectric Type	PTFE	Teflon
Body Material and Plating	Brass, Gold	Brass, Gold
Body Plating Specification	3 µin minimum	MIL-G-45204
Coupling Nut Material and Plating	Brass, Nickel	Brass, Nickel
Coupling Nut Plating Specification	100 µin minimum	

Environmental Specifications

Operating Range Temperature	-55 to +125 deg C
-----------------------------	-------------------

Compliance Certifications (see [product page](#) for current document)

Plotted and Other Data

Notes:

BNC Male to BNC Male Right Angle Cable Using PE-SR405FLJ Coax



PE3W06205

Typical Performance Data

How to Order

Part Number Configuration:

PE3W06205

- xx

uu

Unit of Measure:

cm = Centimeters

<blank> = Inches

Length

Base Number

Example: PE3W06205-12 = 12 inches long cable
PE3W06205-100cm = 100 cm long cable

BNC Male to BNC Male Right Angle Cable Using PE-SR405FLJ Coax from Pasternack Enterprises has same day shipment for domestic and International orders. Our RF, microwave and millimeter wave products maintain a 99.4% availability and are part of the broadest selection in the industry.

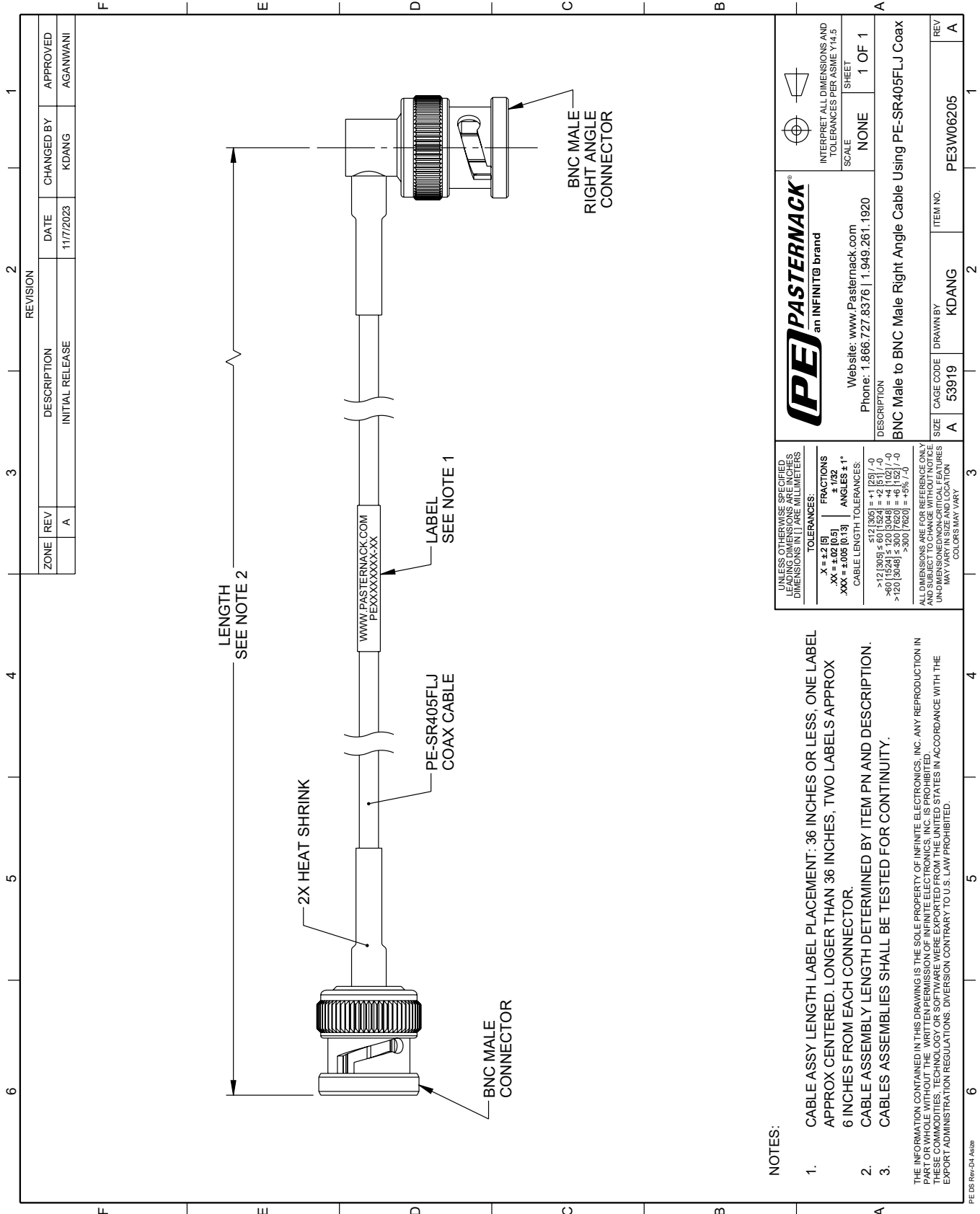
Click the following link (or enter part number in "SEARCH" on website) to obtain additional part information including price, inventory and certifications: [BNC Male to BNC Male Right Angle Cable Using PE-SR405FLJ Coax PE3W06205](#)

URL: <https://www.pasternack.com/bnc-male-to-bnc-male-cable-using-pe-sr405flj-pe3w06205-p.aspx>

The information contained within this document is accurate to the best of our knowledge and representative of the part described herein. It may be necessary to make modifications to the part and/or the documentation of the part in order to implement improvements. Pasternack Enterprises reserves the right to make such changes as required. Unless otherwise stated, all specifications are nominal. Pasternack Enterprises does not make any representation or warranty regarding the suitability of the part described herein for any particular purpose, and Pasternack Enterprises does not assume liability arising out of the use of any part or document.

PE3W06205 CAD Drawing

BNC Male to BNC Male Right Angle Cable Using PE-SR405FLJ Coax




NOTES:

1. CABLE ASSY LENGTH LABEL PLACEMENT: 36 INCHES OR LESS, ONE LABEL APPROX CENTERED, LONGER THAN 36 INCHES, TWO LABELS APPROX 6 INCHES FROM EACH CONNECTOR.
2. CABLE ASSEMBLY LENGTH DETERMINED BY ITEM PN AND DESCRIPTION.
3. CABLE ASSEMBLIES SHALL BE TESTED FOR CONTINUITY.

THE INFORMATION CONTAINED IN THIS DRAWING IS THE SOLE PROPERTY OF INFINITE ELECTRONICS, INC. ANY REPRODUCTION IN PART OR WHOLE WITHOUT THE WRITTEN PERMISSION OF INFINITE ELECTRONICS, INC. IS PROHIBITED. THESE COMMODITIES, TECHNOLOGY OR SOFTWARE WERE EXPORTED FROM THE UNITED STATES IN ACCORDANCE WITH THE EXPORT ADMINISTRATION REGULATIONS. DIVERSION CONTRARY TO U.S. LAW PROHIBITED.

PE DS Rev-D4-A320

REVISION		DATE	CHANGED BY	APPROVED
ZONE	REV			
	A	11/7/2023	KDANG	AGANWANI
DESCRIPTION				
INITIAL RELEASE				

 PASTERNAK an INFINITB brand		INTERPRET ALL DIMENSIONS AND TOLERANCES PER ASME Y14.5 SCALE NONE SHEET 1 OF 1
Website: www.Pasternack.com Phone: 1.866.727.8376 1.949.261.1920		
DESCRIPTION BNC Male to BNC Male Right Angle Cable Using PE-SR405FLJ Coax		
SIZE	CAGE CODE	ITEM NO.
A	53919	PE3W06205
DRAWN BY		REV
KDANG		A

UNLESS OTHERWISE SPECIFIED LEADING DIMENSIONS ARE IN INCHES DIMENSIONS IN [] ARE MILLIMETERS	TOLERANCES: .X = ±.2 [5] .XX = ±.02 [0.5] .XXX = ±.005 [0.13]	FRACIONS ± 1/32 ANGLES ± 1°
CABLE LENGTH TOLERANCES: <12 [305] ±.12 [3.05] = ±1 [25] / -0 >12 [305] ±.60 [15.24] = ±.2 [5] / -0 >60 [1524] ±.120 [30.48] = ±.4 [10.27] / -0 >120 [3048] ±.300 [76.20] = ±.93 [23.3] / -0 >300 [7620] ±.93 [23.3] = ±.93 [23.3] / -0		
ALL DIMENSIONS ARE FOR REFERENCE ONLY UNLESS OTHERWISE SPECIFIED UNDIMENSIONED NON-CRITICAL FEATURES MAY VARY IN SIZE AND LOCATION COLORS MAY VARY		