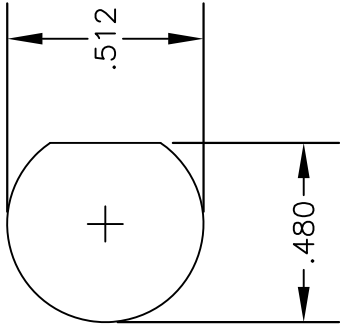
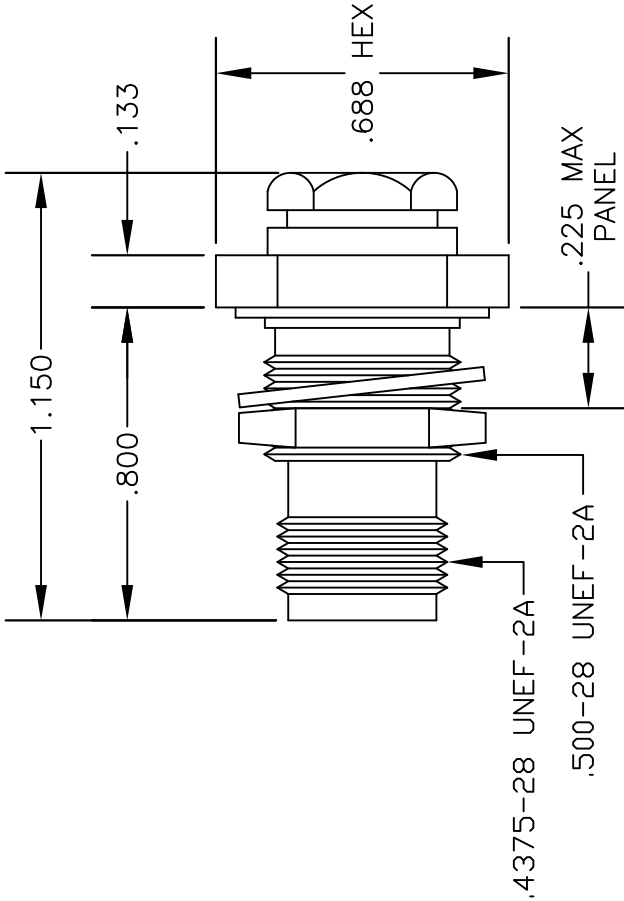


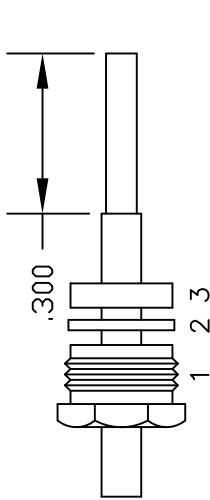
| MATERIALS      |                     |
|----------------|---------------------|
| BODY           | BRASS NICKEL PLATED |
| CONTACT        | GOLD PLATED         |
| INSULATOR      | PTFE                |
| SOLDER ADAPTER | BRASS GOLD PLATED   |



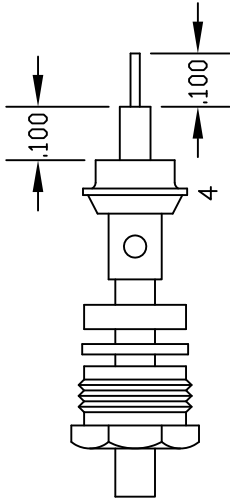
MOUNTING HOLE



### ASSEMBLY PROCEDURES



ASSEMBLY (A)



ASSEMBLY (B)

1. SLIDE CLAMP NUT (1), WASHER (2) & GASKET (3) OVER CABLE. STRIP CABLE AS SHOWN IN ASSEMBLY (A). DO NOT CUT DIELECTRIC.
2. SLIDE ADAPTER (4) OVER CABLE UNTIL ADAPTER (4) BOTTOMS ON OUTER CONDUCTOR. SOLDER ADAPTER (4) TO OUTER CONDUCTOR USING MINIMUM HEAT.
3. STRIP CABLE AS SHOWN IN ASSEMBLY (B). SOLDER CONTACT TO CENTER CONDUCTOR. SLIDE ASSEMBLY FORWARD & TIGHTEN TO BODY.



**PASTERNAK ENTERPRISES, INC.**  
P.O BOX 16759, IRVINE, CA 92623  
PHONE (949) 261-1920 FAX (949) 261-7451  
WEB ADDRESS: [www.pasternack.com](http://www.pasternack.com)  
E-MAIL ADDRESS: [sales@pasternack.com](mailto:sales@pasternack.com)

**COAXIAL & FIBER OPTICS**

DWG TITLE

**PE4703**

DES.

REVERSE POLARITY TNC FEMALE,  
BULKHEAD, SOLDER/CLAMP ATTACHMENT  
FOR RG405, PE-SR405AL & PE-SR405FL

REV. A

**FSCM NO. 53919**

CAD FILE

042110

SCALE

N/A

SIZE

A

147

NOTES:

1. UNLESS OTHERWISE SPECIFIED ALL DIMENSIONS ARE NOMINAL.
2. ALL SPECIFICATIONS ARE SUBJECT TO CHANGE WITHOUT NOTICE AT ANY TIME.
3. DIMENSIONS ARE IN INCHES.



SMP Female Right Angle Connector Solder Attachment  
for RG405, PE-SR405FL, PE-SR405FLJ Mitered Body

TECHNICAL DATA SHEET

PE44913

**Configuration**

|                                    |                                |
|------------------------------------|--------------------------------|
| Connector                          | SMP Female                     |
| Connector Specification            | DESC 94008                     |
| Connector Interface Type           | RG405, PE-SR405FL, PE-SR405FLJ |
| Attachment Method (Shield/Contact) | Solder/Solder                  |
| Body Style                         | Right Angle                    |

**Electrical Specifications**

|           |         |
|-----------|---------|
| Impedance | 50 Ohms |
|-----------|---------|

**Mechanical Specifications**

**Size**

|            |                     |
|------------|---------------------|
| Length     | 0.265 in [6.73 mm]  |
| Width/Dia. | 0.158 in [4.01 mm]  |
| Height     | 0.29 in [7.37 mm]   |
| Weight     | 0.082 lbs [37.19 g] |

**Connector**

|                               |                        |
|-------------------------------|------------------------|
| Type                          | SMP Female             |
| Contact Material and Plating  | Beryllium Copper, Gold |
| Contact Plating Specification | MIL-G-45204            |
| Body Material and Plating     | Beryllium Copper, Gold |
| Body Plating Specification    | MIL-G-45204            |
| Dielectric Type               | PTFE                   |

**Compliance Certifications** (visit [www.Pasternack.com](http://www.Pasternack.com) for current document)

RoHS Compliant

Click the following link (or enter part number in "SEARCH" on website) to obtain additional part information including price, inventory and certifications: [SMP Female Right Angle Connector Solder Attachment for RG405, PE-SR405FL, PE-SR-405FLJ Mitered Body PE44913](#)



## SMP Female Right Angle Connector Solder Attachment for RG405, PE-SR405FL, PE-SR405FLJ Mitered Body

### TECHNICAL DATA SHEET

PE44913

#### Plotted and Other Data

Notes:

- Values at +25 °C, sea level

SMP Female Right Angle Connector Solder Attachment for RG405, PE-SR405FL, PE-SR405FLJ Mitered Body from Pasternack Enterprises has same day shipment for domestic and International orders. Our RF, microwave and millimeter wave products maintain a 99% availability and are part of the broadest selection in the industry.

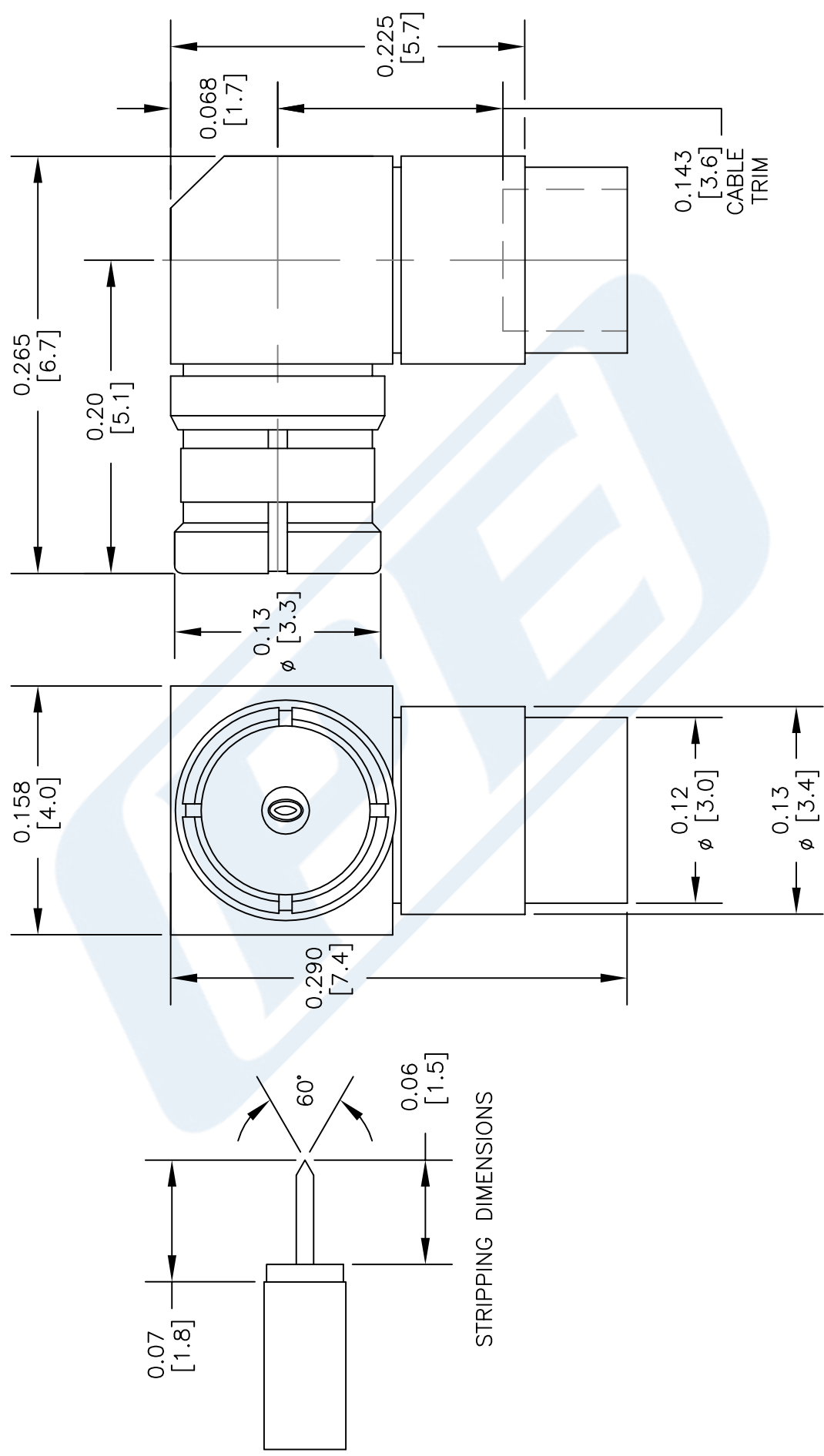
Click the following link (or enter part number in "SEARCH" on website) to obtain additional part information including price, inventory and certifications: [SMP Female Right Angle Connector Solder Attachment for RG405, PE-SR405FL, PE-SR405FLJ Mitered Body PE44913](http://www.pasternack.com/smp-female-standard-rg405-pe-sr405fl-pe-sr405flj-connector-pe44913-p.aspx)

URL: <http://www.pasternack.com/smp-female-standard-rg405-pe-sr405fl-pe-sr405flj-connector-pe44913-p.aspx>

The information contained in this document is accurate to the best of our knowledge and representative of the part described herein. It may be necessary to make modifications to the part and/or the documentation of the part, in order to implement improvements. Pasternack reserves the right to make such changes as required. Unless otherwise stated, all specifications are nominal. Pasternack does not make any representation or warranty regarding the suitability of the part described herein for any particular purpose, and Pasternack does not assume any liability arising out of the use of any part or documentation.

PE44913 CAD Drawing

SMP Female Right Angle Connector Solder Attachment for  
RG405, PE-SR405FL, PE-SR405FLJ Mitered Body



NOTES:  
1. UNLESS OTHERWISE SPECIFIED ALL DIMENSIONS ARE NOMINAL.  
2. ALL SPECIFICATIONS ARE SUBJECT TO CHANGE WITHOUT NOTICE AT ANY TIME.  
3. DIMENSIONS ARE IN INCHES [mm].  
4. FITS MIL-C-17 AND EQUIVALENT CABLES.

|           |  |                |  |                 |  |           |  |        |  |     |  |
|-----------|--|----------------|--|-----------------|--|-----------|--|--------|--|-----|--|
| DWG TITLE |  | FSCM NO. 53919 |  | CAD FILE 102913 |  | SCALE N/A |  | SIZE A |  | 150 |  |
| PE44913   |  |                |  |                 |  |           |  |        |  |     |  |



**PASTERNAK®**  
Pasternack Enterprises, Inc.  
P.O. Box 16759 | Irvine | CA | 92623  
Phone: (949) 261-1920 | Fax: (949) 261-7451  
Website: www.pasternack.com | E-Mail: sales@pasternack.com



## Formable 086 Semirigid Coax Cable with Tinned Braid Outer Conductor and Black FEP Jacket

### RF Cables Technical Data Sheet

PE-SR405FLJ

#### Configuration

- Formable Cable
- 1 Shield(s)

#### Features

- Dimensionally the same as standard solid outer conductor semi-rigid coax
- Standard semi-rigid connectors can be used
- Cable is hand formable and does not require special tools to bend
- Connectors are easily soldered to Tin soaked outer conductor
- Cable can be formed more than once without damage to outer conductor
- High RF Shielding >100 dB

#### Description

Formable semi-rigid coax is a hand formable version of standard semi-rigid that does not require complicated and costly pre-formed cable assemblies. Because the dimensions and electrical characteristics are so closely matched to semi-rigid coax, standard semi-rigid connectors can be used. The tin soaked copper braid outer shield provides excellent RF shielding. FEP Jacket reduces the chance of shorting exposed contacts or circuit conductors.

#### Electrical Specifications

| Description                   | Minimum | Typical     | Maximum | Units        |
|-------------------------------|---------|-------------|---------|--------------|
| Frequency Range               | DC      |             | 61      | GHz          |
| Impedance                     |         | 50          |         | Ohms         |
| Velocity of Propagation       |         | 69.5        |         | %            |
| Time Delay                    |         | 1.43 [4.69] |         | ns/ft [ns/m] |
| Shielding Effectiveness       | 100     |             |         | dB           |
| Operating Voltage (AC)        |         |             | 1,500   | Vrms         |
| Inner Conductor DC Resistance |         |             | 65.7    | Ohms/1000ft  |
| Outer Conductor DC Resistance |         |             | 10.2    | Ohms/1000ft  |
| Nominal Capacitance           |         | 29 [95.14]  |         | pF/ft [pF/m] |

#### Performance by Frequency Band

| Description           | F1    | F2    | F3     | F4    | F5    | Units    |
|-----------------------|-------|-------|--------|-------|-------|----------|
| Frequency             | 0.5   | 1     | 5      | 10    | 20    | GHz      |
| Attenuation, Typ      | 15    | 22.5  | 54.9   | 81.2  | 120   | dB/100ft |
|                       | 49.21 | 73.82 | 180.12 | 266.4 | 393.7 | dB/100m  |
| Input Power (CW), Max | 173.5 | 121.5 | 52.2   | 35.8  | 24.3  | Watts    |

Click the following link (or enter part number in "SEARCH" on website) to obtain additional part information including price, inventory and certifications: [Formable PE-SR405FLJ Coax Cable with Outer Conductor and Black FEP Jacket PE-SR-405FLJ](#)



Formable 086 Semirigid Coax Cable with Tinned  
Braid Outer Conductor and Black FEP Jacket

RF Cables Technical Data Sheet

PE-SR405FLJ

**Mechanical Specifications**

|                                 |                          |
|---------------------------------|--------------------------|
| Diameter                        | 0.105 in [2.67 mm]       |
| Weight                          | 0.015 lbs/ft [0.02 Kg/m] |
| Min. Bend Radius (Installation) | 0.5 in [12.7 mm]         |
| Min. Bend Radius (Repeated)     | 0.787 in [19.99 mm]      |

**Construction Specifications**

| Description     | Material and Plating                 | Diameter           |
|-----------------|--------------------------------------|--------------------|
| Inner Conductor | Copper Clad Steel, Silver, 1 Strands | 0.02 in [0.51 mm]  |
| Conductor Type  | Solid                                |                    |
| Dielectric      | PTFE                                 | 0.062 in [1.57 mm] |
| Outer Conductor | Tinned Copper Composite Braid        | 0.085 in [2.16 mm] |
| Jacket          | FEP, Black                           | 0.105 in [2.67 mm] |

**Environmental Specifications**

|                    |                   |
|--------------------|-------------------|
| <b>Temperature</b> |                   |
| Operating Range    | -55 to +125 deg C |

**Compliance Certifications** (see [product page](#) for current document)

**Plotted and Other Data**

Notes:

Formable 086 Semirigid Coax Cable with Tinned Braid Outer Conductor and Black FEP Jacket from Pasternack Enterprises has same day shipment for domestic and International orders. Our RF, microwave and millimeter wave products maintain a 99.4% availability and are part of the broadest selection in the industry.

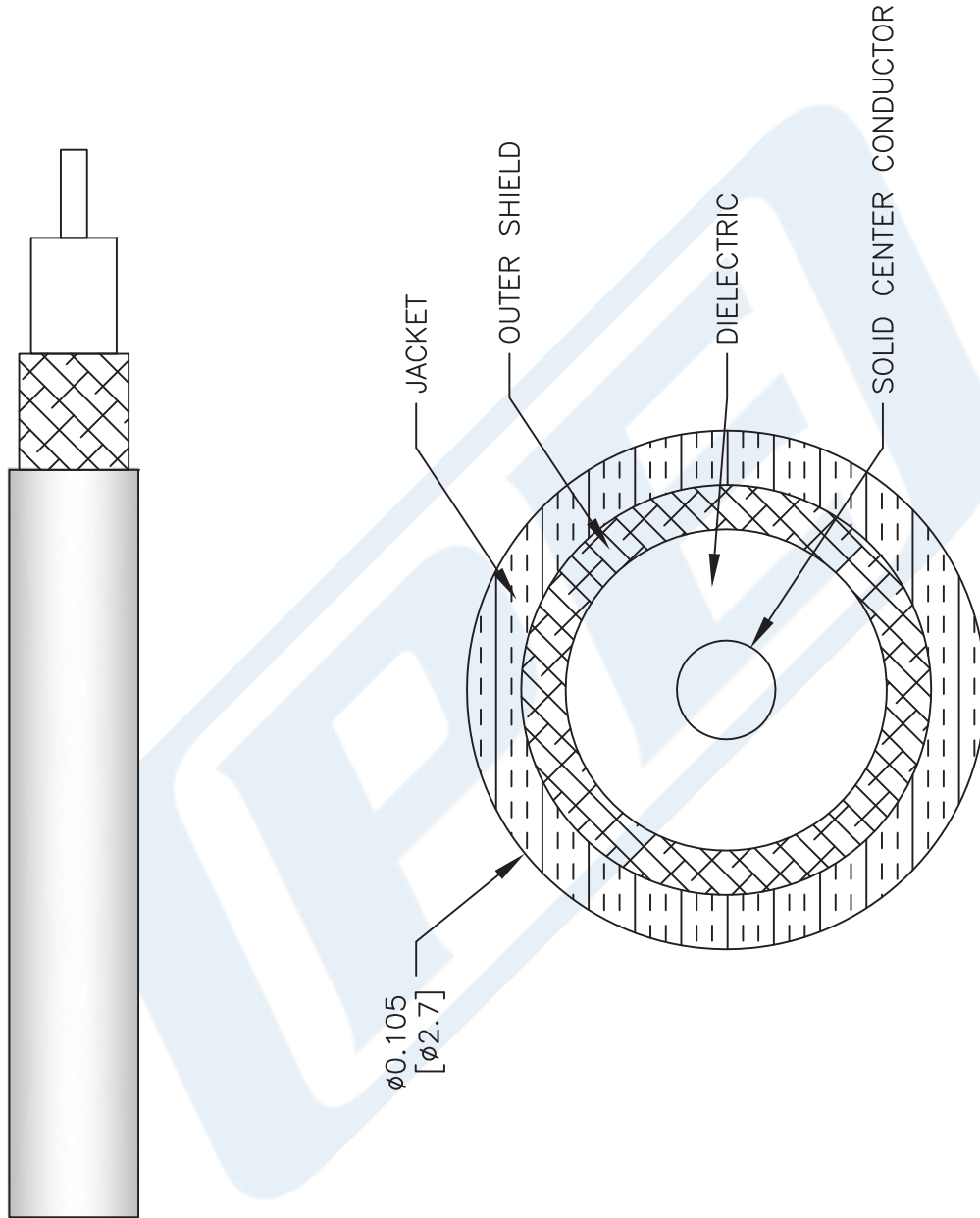
Click the following link (or enter part number in "SEARCH" on website) to obtain additional part information including price, inventory and certifications: [Formable PE-SR405FLJ Coax Cable with Outer Conductor and Black FEP Jacket PE-SR405FLJ](#)

URL: <https://www.pasternack.com/50-ohm-formable-086-semirigid-tinned-braid-outer-conductor-fep-jacket-black-pe-sr405flj-p.aspx>

The information contained in this document is accurate to the best of our knowledge and representative of the part described herein. It may be necessary to make modifications to the part and/or the documentation of the part, in order to implement improvements. Pasternack reserves the right to make such changes as required. Unless otherwise stated, all specifications are nominal. Pasternack does not make any representation or warranty regarding the suitability of the part described herein for any particular purpose, and Pasternack does not assume any liability arising out of the use of any part or documentation.

# PE-SR405FLJ CAD Drawing

Formable 086 Semirigid Coax Cable with Tinned Braid  
Outer Conductor and Black FEP Jacket



## NOTES:

1. UNLESS OTHERWISE SPECIFIED ALL DIMENSIONS ARE NOMINAL.
2. ALL SPECIFICATIONS ARE SUBJECT TO CHANGE WITHOUT NOTICE AT ANY TIME.
3. DIMENSIONS ARE IN INCHES [mm].

## DWG TITLE

**PE-SR405FLJ**

CAGE CODE 53919

2233

**PE PASTERNAK®**  
THE ENGINEER'S RF SOURCE

Pasternack Enterprises, Inc.  
P.O. Box 16759 | Irvine | CA | 92623  
Phone: (949) 261-1920 | Fax: (949) 261-7451  
Website: [www.pasternack.com](http://www.pasternack.com) | E-Mail: [sales@pasternack.com](mailto:sales@pasternack.com)