

## N Male to N Male Right Angle Cable Using PE-SR402AL Coax



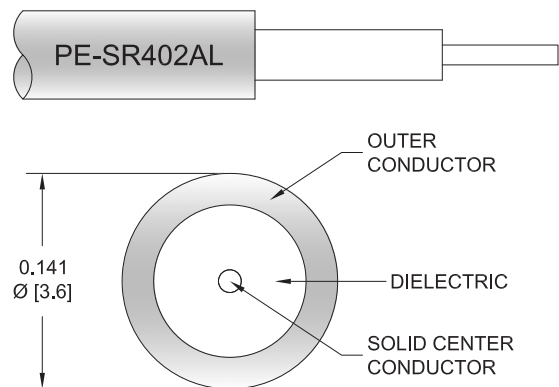
### PE3W06910

#### Configuration

- Connector 1: N Male
- Connector 2: N Male Right Angle
- Cable Type: PE-SR402AL
- Coax Flex Type: Semi-Rigid

#### Features

- Max Frequency 8 GHz



#### Applications

- General Purpose
- Laboratory Use

#### Description

Pasternack's PE3W06910 type N male to type N male right angle cable using PE-SR402AL coax is part of our full line of RF components available for same-day shipping. Pasternack's semi-rigid RF cable assemblies are ideal for high performance applications and can be formed, using proper tooling, to the routing pattern required. This Pasternack type N to type N cable assembly has a male to male gender configuration with 50 ohm semi-rigid PE-SR402AL coax. The PE3W06910 type N male to type N male cable assembly operates to 8 GHz. The right angle type N interface on the PE-SR402AL cable allows for easier connections in tight spaces.

Custom versions of most RF cable assemblies can be built and shipped same day. Custom cable assembly lengths can be obtained by specifying the desired length on the web site at time of order or by contacting a sales representative. Other available RF cable assembly value added services include connector orientation or clocking, heat shrink booting and custom labeling. RF testing can also be performed to document the electrical performance of your cable assembly.

#### Electrical Specifications

Description	Minimum	Typical	Maximum	Units
Frequency Range	DC		8	GHz
VSWR			1.4:1	

#### Specifications by Frequency

## N Male to N Male Right Angle Cable Using PE-SR402AL Coax



### PE3W06910

Part Number	Length	Description	F1	F2	F3	F4	Units	Weight (lbs)
			Frequency	1000	2000	4000	8000	
PE3W06910	Custom Lengths Available	Insertion Loss (Typ.)	0.13	0.167	0.24	0.387	dB/ft	
			0.43	0.55	0.79	1.27	dB/m	
PE3W06910-6	6 inch	Insertion Loss (Typ.)	0.37	0.39	0.42	0.5	dB	0.16
PE3W06910-12	12 inch	Insertion Loss (Typ.)	0.43	0.47	0.54	0.69	dB	0.168
PE3W06910-24	24 inch	Insertion Loss (Typ.)	0.56	0.64	0.78	1.08	dB	0.186
PE3W06910-36	36 inch	Insertion Loss (Typ.)	0.69	0.81	1.02	1.47	dB	0.203
PE3W06910-48	48 inch	Insertion Loss (Typ.)	0.82	0.97	1.26	1.85	dB	0.22

The insertion loss data for the base model does not include loss due to the connectors. Each length includes insertion loss due to the connectors.

Loss due to Connector 1:	0.1 dB
Loss due to Connector 2:	0.2 dB
Base Weight:	0.168 pounds
Additional Weight per Inch:	0.00144 pounds

### Mechanical Specifications

#### Cable Assembly

Width/Diameter	0.5 in [12.7 mm]
Weight	0.168 lbs [76.2 g]

#### Cable

Cable Type	PE-SR402AL
Impedance	50 Ohms
Inner Conductor Type	Solid
Inner Conductor Material and Plating	Copper Clad Steel, Silver
Dielectric Type	PTFE
Number of Shields	1
Outer Conductor 1 Material and Plating	Tinned Aluminum
Repeated Minimum Bend Radius	0.15 in [3.81 mm]

## N Male to N Male Right Angle Cable Using PE-SR402AL Coax



### PE3W06910

#### Connectors

Description	Connector 1	Connector 2
Type	N Male	N Male Right Angle
Specification	MIL-STD-348A	
Impedance	50 Ohms	50 Ohms
Configuration	Straight	Right Angle
Contact Material and Plating	Brass, Gold	Brass, Gold over Nickel
Contact Plating Specification	30 µin minimum	
Dielectric Type	PTFE	PTFE
Body Material and Plating	Brass, Gold	Brass, Nickel
Coupling Nut Material and Plating	Brass, Nickel	Brass, Nickel
Coupling Nut Plating Specification	100 µin minimum	

#### Environmental Specifications

**Compliance Certifications** (see [product page](#) for current document)

#### Plotted and Other Data

Notes:

## N Male to N Male Right Angle Cable Using PE-SR402AL Coax



### PE3W06910

#### Typical Performance Data

#### How to Order

Part Number Configuration:

**PE3W06910**

- **xx**

**uu**

Unit of Measure:

cm = Centimeters

<blank> = Inches

Length

Base Number

Example: PE3W06910-12 = 12 inches long cable  
PE3W06910-100cm = 100 cm long cable

N Male to N Male Right Angle Cable Using PE-SR402AL Coax from Pasternack Enterprises has same day shipment for domestic and International orders. Our RF, microwave and millimeter wave products maintain a 99.4% availability and are part of the broadest selection in the industry.

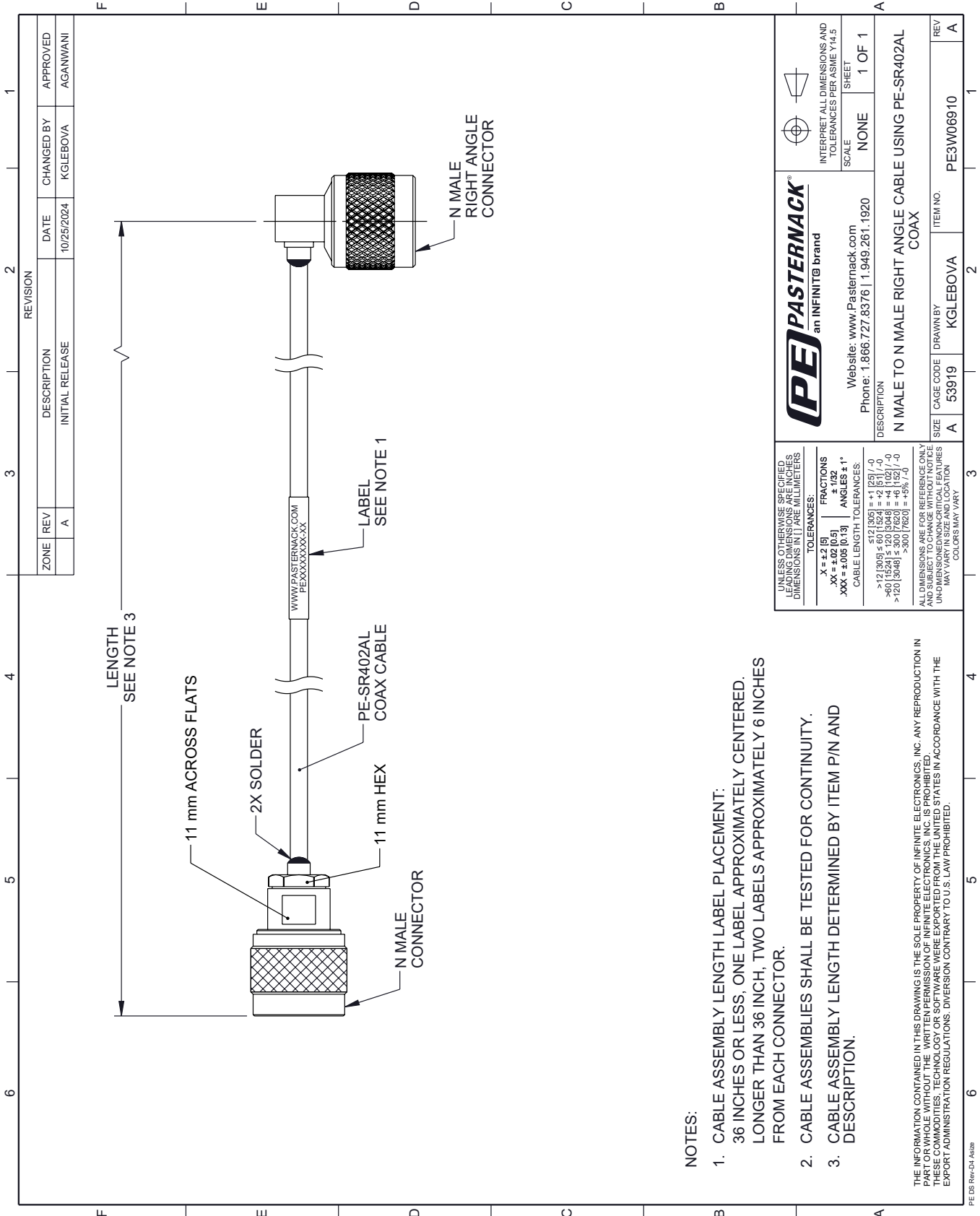
Click the following link (or enter part number in "SEARCH" on website) to obtain additional part information including price, inventory and certifications: [N Male to N Male Right Angle Cable Using PE-SR402AL Coax PE3W06910](#)

URL: <https://www.pasternack.com/n-male-to-n-male-cable-using-pe-sr402al-pe3w06910-p.aspx>

The information contained within this document is accurate to the best of our knowledge and representative of the part described herein. It may be necessary to make modifications to the part and/or the documentation of the part in order to implement improvements. Pasternack Enterprises reserves the right to make such changes as required. Unless otherwise stated, all specifications are nominal. Pasternack Enterprises does not make any representation or warranty regarding the suitability of the part described herein for any particular purpose, and Pasternack Enterprises does not assume liability arising out of the use of any part or document.

# PE3W06910 CAD Drawing

N Male to N Male Right Angle Cable Using PE-SR402AL Coax



**NOTES:**

1. CABLE ASSEMBLY LENGTH LABEL PLACEMENT:  
36 INCHES OR LESS, ONE LABEL APPROXIMATELY CENTERED.  
LONGER THAN 36 INCH, TWO LABELS APPROXIMATELY 6 INCHES FROM EACH CONNECTOR.
2. CABLE ASSEMBLIES SHALL BE TESTED FOR CONTINUITY.
3. CABLE ASSEMBLY LENGTH DETERMINED BY ITEM P/N AND DESCRIPTION.

THE INFORMATION CONTAINED IN THIS DRAWING IS THE SOLE PROPERTY OF INFINITE ELECTRONICS, INC. ANY REPRODUCTION IN PART OR WHOLE WITHOUT THE WRITTEN PERMISSION OF INFINITE ELECTRONICS, INC. IS PROHIBITED. THESE COMMODITIES, TECHNOLOGY OR SOFTWARE WERE EXPORTED FROM THE UNITED STATES IN ACCORDANCE WITH THE EXPORT ADMINISTRATION REGULATIONS. DIVERSION CONTRARY TO U.S. LAW PROHIBITED.

PE DS Rev-D4-A320

REVISION		DATE	CHANGED BY	APPROVED
ZONE	REV			
	A	10/25/2024	KGLEBOVA	AGANWANI
DESCRIPTION				
INITIAL RELEASE				

Website: <a href="http://www.Pasternack.com">www.Pasternack.com</a> Phone: 1.866.727.8376   1.949.261.1920		INTERPRET ALL DIMENSIONS AND TOLERANCES PER ASME Y14.5 SCALE NONE SHEET 1 OF 1
DESCRIPTION <b>N MALE TO N MALE RIGHT ANGLE CABLE USING PE-SR402AL COAX</b>		
UNLESS OTHERWISE SPECIFIED LEADING DIMENSIONS ARE IN INCHES DIMENSIONS IN [ ] ARE MILLIMETERS TOLERANCES: .X = ±.2 [5] .XX = ±.02 [0.5] .XXX = ±.005 [0.13] FRACTIONS ± 1/32 ANGLES ± 1° CABLE LENGTH TOLERANCES: ≤12 [305] ±.60 [1524] = ±.2 [5.1] / -0 >12 [305] ≤.60 [1524] = ±.4 [102] / -0 >60 [1524] ≤.120 [3048] = ±.4 [102] / -0 >120 [3048] >.300 [7620] = ±.5% / -0 ALL DIMENSIONS ARE FOR REFERENCE ONLY UNLESS OTHERWISE SPECIFIED UNDIMENSIONED NON-CRITICAL FEATURES MAY VARY IN SIZE AND LOCATION COLORS MAY VARY	CAGE CODE 53919 DRAWN BY KGLEBOVA ITEM NO. PE3W06910	REV A