



7/16 DIN Male to N Female Cable Using RG8 Coax

RF Cable Assemblies Technical Data Sheet

PE3W07200

Configuration

- Connector 1: 7/16 DIN Male
- Connector 2: N Female
- Cable Type: RG8

Features

- 66% Phase Velocity
- PVC (NC) Jacket

Applications

- General Purpose
- Laboratory Use

Description

Pasternack's PE3W07200 7/16 DIN male to type N female cable using RG8 coax is part of our full line of RF components available for same-day shipping. Pasternack's flexible RF cable assemblies are ideal for applications where tight bends and flexure are required. This Pasternack 7/16 DIN to type N cable assembly has a male to female gender configuration with 50 ohm flexible RG8 coax.

Custom versions of most RF cable assemblies can be built and shipped same day. Custom cable assembly lengths can be obtained by specifying the desired length on the web site at time of order or by contacting a sales representative. Other available RF cable assembly value added services include connector orientation or clocking, heat shrink booting and custom labeling. RF testing can also be performed to document the electrical performance of your cable assembly.

Electrical Specifications

Description	Minimum	Typical	Maximum	Units
Velocity of Propagation		66		%
Capacitance		30.8 [101.05]		pF/ft [pF/m]

Mechanical Specifications

Cable Assembly

Weight 0.427 lbs [193.68 g]

Cable

Cable Type RG8
 Impedance 50 Ohms
 Inner Conductor Type Stranded
 Inner Conductor Material and Plating Copper
 Dielectric Type PE
 Number of Shields 1
 Shield Layer 1 Copper Braid

Click the following link (or enter part number in "SEARCH" on website) to obtain additional part information including price, inventory and certifications: [7/16 DIN Male to N Female Cable Using RG8 Coax PE3W07200](#)



7/16 DIN Male to N Female Cable Using RG8 Coax

RF Cable Assemblies Technical Data Sheet

PE3W07200

Jacket Material PVC (NC), Black
Jacket Diameter 0.405 in [10.29 mm]

Connectors

Description	Connector 1	Connector 2
Type	7/16 DIN Male	N Female
Impedance	50 Ohms	50 Ohms
Body Material and Plating	Brass, Nickel	Brass, Nickel

Compliance Certifications (see [product page](#) for current document)

Plotted and Other Data

Notes:

Click the following link (or enter part number in "SEARCH" on website) to obtain additional part information including price, inventory and certifications: [7/16 DIN Male to N Female Cable Using RG8 Coax PE3W07200](#)



7/16 DIN Male to N Female Cable Using RG8 Coax

RF Cable Assemblies Technical Data Sheet

PE3W07200

How to Order

Part Number Configuration:

PE3W07200

- **xx**

uu

Unit of Measure:
cm = Centimeters
<blank> = Inches
Length
Base Number

Example: PE3W07200-12 = 12 inches long cable
PE3W07200-100cm = 100 cm long cable

7/16 DIN Male to N Female Cable Using RG8 Coax from Pasternack Enterprises has same day shipment for domestic and International orders. Our RF, microwave and millimeter wave products maintain a 99.4% availability and are part of the broadest selection in the industry.

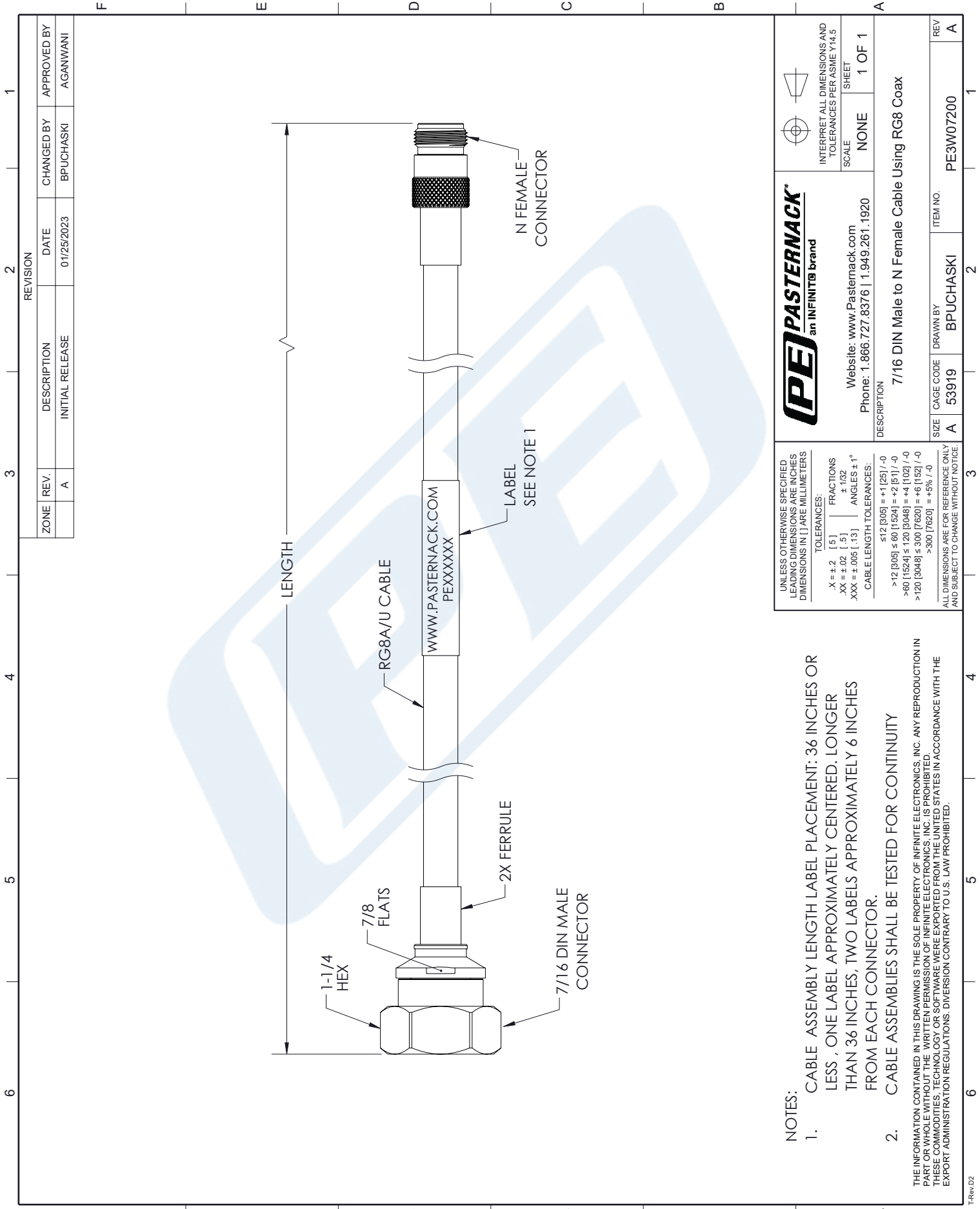
Click the following link (or enter part number in "SEARCH" on website) to obtain additional part information including price, inventory and certifications: [7/16 DIN Male to N Female Cable Using RG8 Coax PE3W07200](#)

URL: <https://www.pasternack.com/7-16-din-male-to-n-female-cable-using-rg8-pe3w07200-p.aspx>

The information contained in this document is accurate to the best of our knowledge and representative of the part described herein. It may be necessary to make modifications to the part and/or the documentation of the part, in order to implement improvements. Pasternack reserves the right to make such changes as required. Unless otherwise stated, all specifications are nominal. Pasternack does not make any representation or warranty regarding the suitability of the part described herein for any particular purpose, and Pasternack does not assume any liability arising out of the use of any part or documentation.

PE3W07200 CAD Drawing

7/16 DIN Male to N Female Cable Using RG8 Coax



- NOTES:**
- CABLE ASSEMBLY LABEL PLACEMENT: 36 INCHES OR LESS , ONE LABEL APPROXIMATELY CENTERED. LONGER THAN 36 INCHES, TWO LABELS APPROXIMATELY 6 INCHES FROM EACH CONNECTOR.
 - CABLE ASSEMBLIES SHALL BE TESTED FOR CONTINUITY

THE INFORMATION CONTAINED IN THIS DRAWING IS THE SOLE PROPERTY OF INFINITE ELECTRONICS, INC. ANY REPRODUCTION IN PART OR WHOLE WITHOUT THE WRITTEN PERMISSION OF INFINITE ELECTRONICS, INC. IS PROHIBITED. THESE COMMODITIES, TECHNOLOGY OR SOFTWARE WERE EXPORTED FROM THE UNITED STATES IN ACCORDANCE WITH THE EXPORT ADMINISTRATION REGULATIONS. DIVERSION CONTRARY TO U.S. LAW PROHIBITED.

UNLESS OTHERWISE SPECIFIED LEADING DIMENSIONS ARE INCHES DIMENSIONS IN [] ARE MILLIMETERS	
TOLERANCES:	
.X = ± .2 [.5]	FRACTIONS ± 1/32
.XX = ± .02 [.5]	ANGLES ± 1°
.XXX = ± .005 [.13]	
CABLE LENGTH TOLERANCES:	
≤ 12 [305]	± .1 [25] / -0
> 12 [305] ≤ 60 [1524]	± .2 [5] / -0
> 60 [1524] ≤ 120 [3048]	± .4 [10] / -0
> 120 [3048] ≤ 300 [7620]	± .6 [152] / -0
> 300 [7620]	± .5% / -0
ALL DIMENSIONS ARE FOR REFERENCE ONLY AND SUBJECT TO CHANGE WITHOUT NOTICE.	

Website: www.Pasternack.com
Phone: 1.866.727.8376 | 1.949.261.1920

INTERPRET ALL DIMENSIONS AND TOLERANCES PER ASME Y14.5

SCALE: NONE

SHEET: 1 OF 1

DESCRIPTION: 7/16 DIN Male to N Female Cable Using RG8 Coax

SIZE	CAGE CODE	DRAWN BY	ITEM NO.	REV
A	53919	BPUCHASKI	PE3W07200	A