

## 1.85mm Male to 1.85mm Male Cable Using PE-SR047FL Coax

### PE3W07802

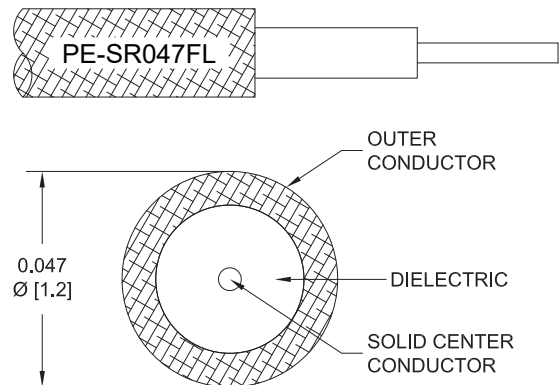


#### Configuration

- Connector 1: 1.85mm Male
- Connector 2: 1.85mm Male
- Cable Type: PE-SR047FL
- Coax Flex Type: Formable

#### Features

- Max Frequency 20 GHz
- 69.5% Phase Velocity



#### Applications

- General Purpose
- Laboratory Use

#### Description

Pasternack's PE3W07802 1.85mm male to 1.85mm male cable using PE-SR047FL coax is part of our full line of RF components available for same-day shipping. Pasternack's formable RF cable assemblies provide an alternative to costly pre-formed semi-rigid assemblies since they are hand formable. This Pasternack 1.85mm to 1.85mm cable assembly has a male to male gender configuration with 50 ohm formable PE-SR047FL coax. The PE3W07802 1.85mm male to 1.85mm male cable assembly operates to 20 GHz.

Custom versions of most RF cable assemblies can be built and shipped same day. Custom cable assembly lengths can be obtained by specifying the desired length on the web site at time of order or by contacting a sales representative. Other available RF cable assembly value added services include connector orientation or clocking, heat shrink booting and custom labeling. RF testing can also be performed to document the electrical performance of your cable assembly.

#### Electrical Specifications

Description	Minimum	Typical	Maximum	Units
Frequency Range	DC		20	GHz
VSWR			1.4:1	
Velocity of Propagation		69.5		%
Capacitance		32 [104.99]		pF/ft [pF/m]
DC Resistance Inner Conductor		207 [679.13]		Ohms/1000ft [Ohms/Km]
DC Resistance Outer Conductor		8 [26.25]		Ohms/1000ft [Ohms/Km]

#### Specifications by Frequency

## 1.85mm Male to 1.85mm Male Cable Using PE-SR047FL Coax



### PE3W07802

Part Number	Length	Description	F1	F2	F3	F4	F5	Units	Weight (lbs)
		Frequency	1000	2000	4500	9000	20000	MHz	
PE3W07802	Custom Lengths Available	Insertion Loss (Typ.)	0.36	0.505	0.808	1.196	1.92	dB/ft	
			1.19	1.66	2.66	3.93	6.3	dB/m	
PE3W07802-6	6 inch	Insertion Loss (Typ.)	0.38	0.46	0.61	0.8	1.16	dB	0.018
PE3W07802-9	9 inch	Insertion Loss (Typ.)	0.47	0.58	0.81	1.1	1.64	dB	0.019
PE3W07802-12	12 inch	Insertion Loss (Typ.)	0.56	0.71	1.01	1.4	2.12	dB	0.019
PE3W07802-24	24 inch	Insertion Loss (Typ.)	0.92	1.21	1.82	2.6	4.04	dB	0.022
PE3W07802-36	36 inch	Insertion Loss (Typ.)	1.28	1.72	2.63	3.79	5.96	dB	0.025

The insertion loss data for the base model does not include loss due to the connectors. Each length includes insertion loss due to the connectors.

Loss due to Connector 1:	0.1 dB
Loss due to Connector 2:	0.1 dB
Base Weight:	0.019 pounds
Additional Weight per Inch:	0.00025 pounds

### Mechanical Specifications

#### Cable Assembly

Width/Diameter	0.5 in [12.7 mm]
Weight	0.019 lbs [8.62 g]

#### Cable

Cable Type	PE-SR047FL
Impedance	50 Ohms
Inner Conductor Type	Solid
Inner Conductor Material and Plating	Copper Clad Steel, Silver
Dielectric Type	PTFE
Number of Shields	1
Outer Conductor 1 Material and Plating	Tinned Copper Braid

## 1.85mm Male to 1.85mm Male Cable Using PE-SR047FL Coax



### PE3W07802

#### Connectors

Description	Connector 1	Connector 2
Type	1.85mm Male	1.85mm Male
Impedance	50 Ohms	50 Ohms
Configuration	Straight	Straight
Contact Material and Plating	Beryllium Copper, Gold	Beryllium Copper, Gold
Contact Plating Specification	50μ Inches.	50μ Inches.
Dielectric Type	PEI	PEI
Body Material and Plating	Passivated Stainless Steel	Passivated Stainless Steel
Body Plating Specification	SAE-AMS-2700	SAE-AMS-2700
Coupling Nut Material and Plating	Passivated Stainless Steel	Passivated Stainless Steel
Coupling Nut Plating Specification	SAE-AMS-2700	SAE-AMS-2700
Hex Size	5/16 Inch	5/16 Inch
Torque	8 in-lbs 0.9 Nm	8 in-lbs 0.9 Nm

#### Environmental Specifications

**Compliance Certifications** (see [product page](#) for current document)

#### Plotted and Other Data

Notes:

## 1.85mm Male to 1.85mm Male Cable Using PE-SR047FL Coax



### PE3W07802

#### Typical Performance Data

#### How to Order

Part Number Configuration: **PE3W07802**    **- xx**    **uu**

Unit of Measure:  
cm = Centimeters  
<blank> = Inches

Length

Base Number

Example:    PE3W07802-12 = 12 inches long cable  
              PE3W07802-100cm = 100 cm long cable

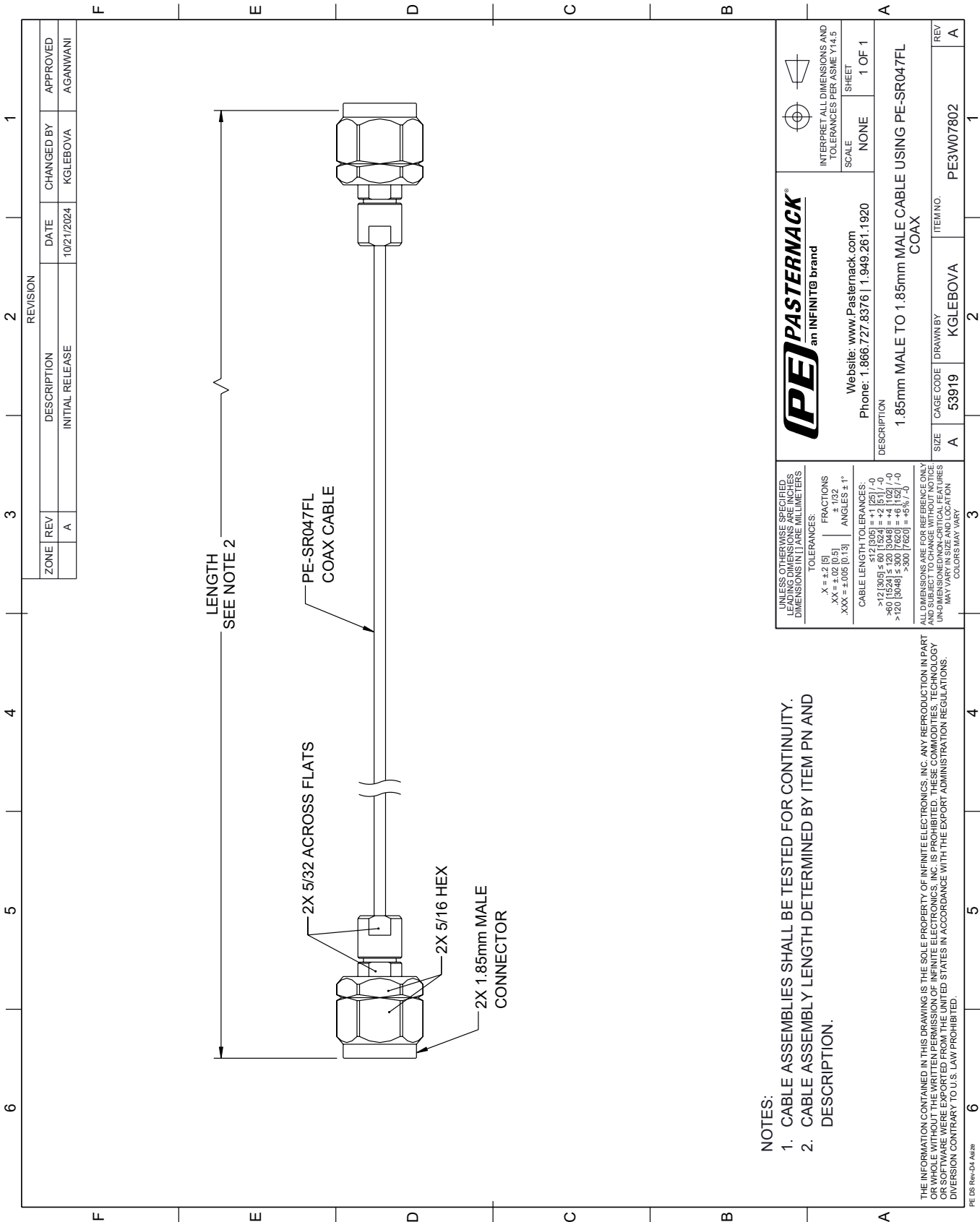
1.85mm Male to 1.85mm Male Cable Using PE-SR047FL Coax from Pasternack Enterprises has same day shipment for domestic and International orders. Our RF, microwave and millimeter wave products maintain a 99.4% availability and are part of the broadest selection in the industry.

Click the following link (or enter part number in "SEARCH" on website) to obtain additional part information including price, inventory and certifications: [1.85mm Male to 1.85mm Male Cable Using PE-SR047FL Coax PE3W07802](#)

URL: <https://www.pasternack.com/1.85mm-male-to-1.85mm-male-cable-using-pe-sr047fl-pe3w07802-p.aspx>

The information contained within this document is accurate to the best of our knowledge and representative of the part described herein. It may be necessary to make modifications to the part and/or the documentation of the part in order to implement improvements. Pasternack Enterprises reserves the right to make such changes as required. Unless otherwise stated, all specifications are nominal. Pasternack Enterprises does not make any representation or warranty regarding the suitability of the part described herein for any particular purpose, and Pasternack Enterprises does not assume liability arising out of the use of any part or document.

PE3W07802 CAD Drawing
1.85mm Male to 1.85mm Male Cable Using PE-SR047FL Coax



- NOTES:
- 1. CABLE ASSEMBLIES SHALL BE TESTED FOR CONTINUITY.
- 2. CABLE ASSEMBLY LENGTH DETERMINED BY ITEM PN AND DESCRIPTION.