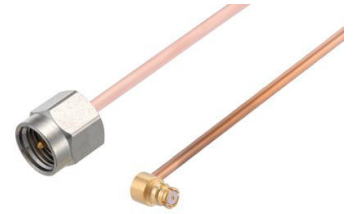


SMP Female Right Angle to SMA Male Cable Using RG405 Coax



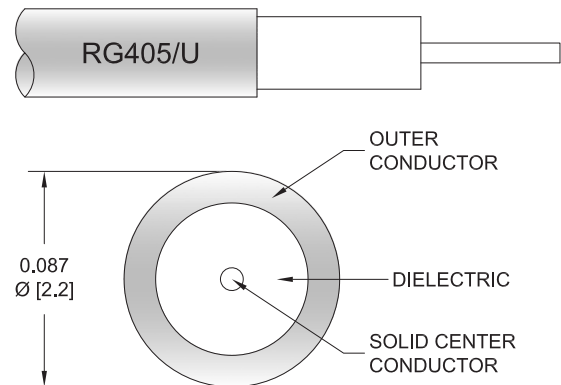
PE3W08669

Configuration

- Connector 1: SMP Female Right Angle
- Connector 2: SMA Male
- Cable Type: RG405
- Coax Flex Type: Semi-Rigid

Features

- Shielding Effectivity > -110 dB
- 69.5% Phase Velocity



Applications

- General Purpose
- Laboratory Use

Description

Pasternack's PE3W08669 SMP female right angle to SMA male cable using RG405 coax is part of our full line of RF components available for same-day shipping. Pasternack's semi-rigid RF cable assemblies are ideal for high performance applications and can be formed, using proper tooling, to the routing pattern required. This Pasternack SMP to SMA cable assembly has a female to male gender configuration with 50 ohm semi-rigid RG405 coax. The right angle SMP interface on the RG405 cable allows for easier connections in tight spaces.

Custom versions of most RF cable assemblies can be built and shipped same day. Custom cable assembly lengths can be obtained by specifying the desired length on the web site at time of order or by contacting a sales representative. Other available RF cable assembly value added services include connector orientation or clocking, heat shrink booting and custom labeling. RF testing can also be performed to document the electrical performance of your cable assembly.

Electrical Specifications

Description	Minimum	Typical	Maximum	Units
Velocity of Propagation		69.5		%
RF Shielding	-110			
Capacitance		29.4 [96.46]		pF/ft [pF/m]

Mechanical Specifications

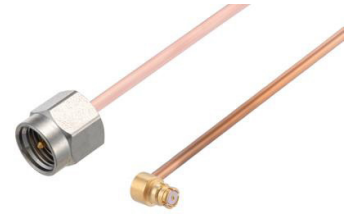
Cable Assembly

Width/Diameter	0.5 in [12.7 mm]
Weight	0.021 lbs [9.53 g]

Cable

Cable Type	RG405
Impedance	50 Ohms
Inner Conductor Type	Solid

SMP Female Right Angle to SMA Male Cable Using RG405 Coax



PE3W08669

Inner Conductor Material and Plating	Copper Clad Steel, Silver
Dielectric Type	PTFE
Number of Shields	1
Outer Conductor 1 Material and Plating	Copper
Jacket Material	Tan
Repeated Minimum Bend Radius	0.05 in [1.27 mm]

Connectors

Description	Connector 1	Connector 2
Type	SMP Female Right Angle	SMA Male
Specification	DESC 94008	
Impedance	50 Ohms	50 Ohms
Configuration	Right Angle	Straight
Mating Cycles		500
Contact Material and Plating	Beryllium Copper, Gold	Beryllium Copper, Gold
Contact Plating Specification	MIL-G-45204	ASTM-B488
Dielectric Type	PTFE	PTFE
Body Material and Plating	Beryllium Copper, Gold	Beryllium Copper, Gold
Body Plating Specification	MIL-G-45204	ASTM-B488
Coupling Nut Material and Plating		Steel
Torque		7 in-lbs 0.79 Nm

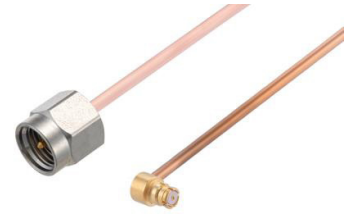
Environmental Specifications

Compliance Certifications (see [product page](#) for current document)

Plotted and Other Data

Notes:

SMP Female Right Angle to SMA Male Cable Using RG405 Coax



PE3W08669

Typical Performance Data

How to Order

Part Number Configuration:

PE3W08669

- xx

uu

Unit of Measure:

cm = Centimeters

<blank> = Inches

Length

Base Number

Example: PE3W08669-12 = 12 inches long cable
PE3W08669-100cm = 100 cm long cable

SMP Female Right Angle to SMA Male Cable Using RG405 Coax from Pasternack Enterprises has same day shipment for domestic and International orders. Our RF, microwave and millimeter wave products maintain a 99.4% availability and are part of the broadest selection in the industry.

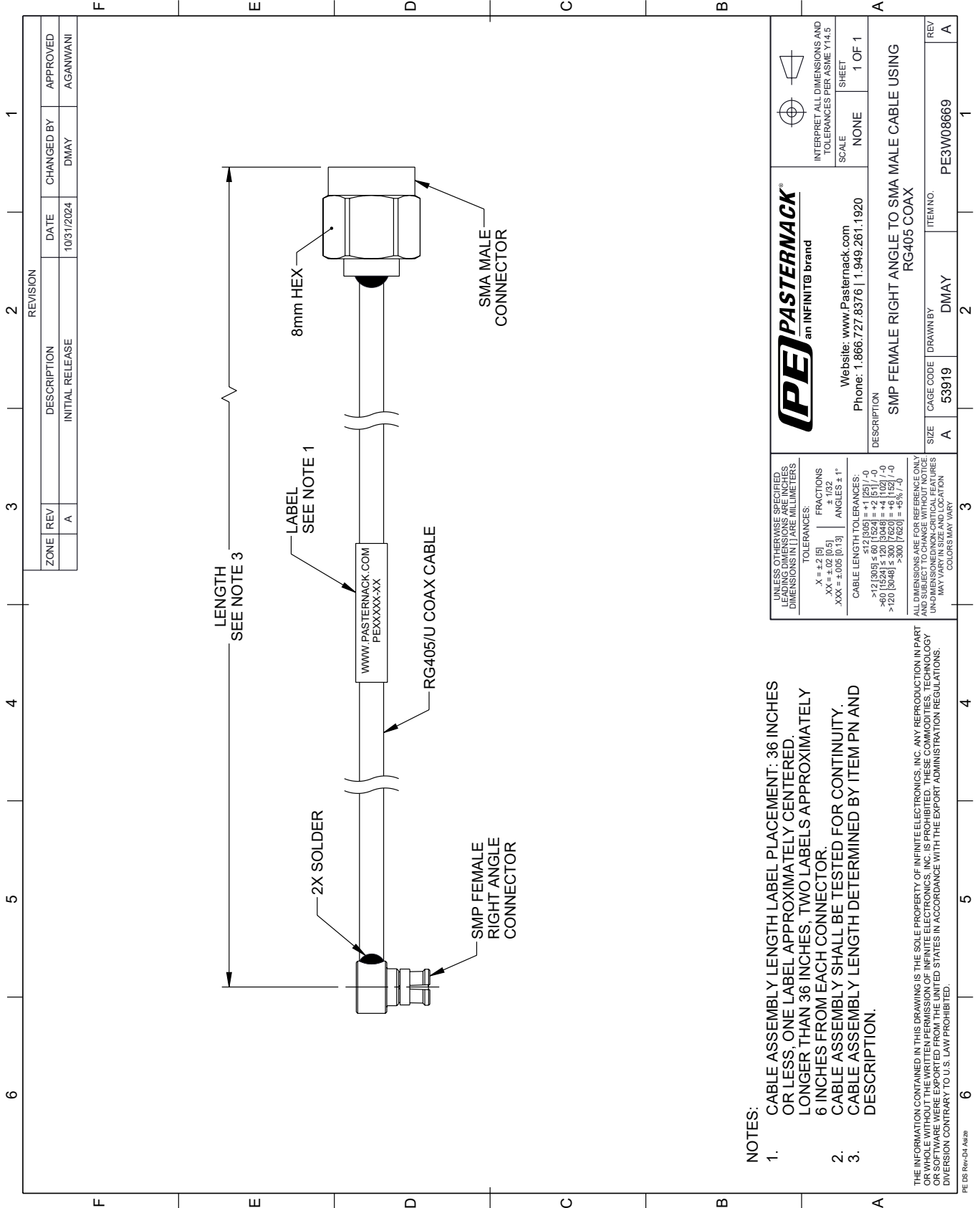
Click the following link (or enter part number in "SEARCH" on website) to obtain additional part information including price, inventory and certifications: [SMP Female Right Angle to SMA Male Cable Using RG405 Coax PE3W08669](#)

URL: <https://www.pasternack.com/smp-female-right-angle-to-sma-male-cable-using-rg405-pe3w08669-p.aspx>

The information contained within this document is accurate to the best of our knowledge and representative of the part described herein. It may be necessary to make modifications to the part and/or the documentation of the part in order to implement improvements. Pasternack Enterprises reserves the right to make such changes as required. Unless otherwise stated, all specifications are nominal. Pasternack Enterprises does not make any representation or warranty regarding the suitability of the part described herein for any particular purpose, and Pasternack Enterprises does not assume liability arising out of the use of any part or document.

PE3W08669 CAD Drawing

SMP Female Right Angle to SMA Male Cable Using RG405 Coax



NOTES:

1. CABLE ASSEMBLY LENGTH LABEL PLACEMENT: 36 INCHES OR LESS, ONE LABEL APPROXIMATELY CENTERED. LONGER THAN 36 INCHES, TWO LABELS APPROXIMATELY 6 INCHES FROM EACH CONNECTOR.
2. CABLE ASSEMBLY SHALL BE TESTED FOR CONTINUITY.
3. CABLE ASSEMBLY LENGTH DETERMINED BY ITEM PN AND DESCRIPTION.

THE INFORMATION CONTAINED IN THIS DRAWING IS THE SOLE PROPERTY OF INFINITE ELECTRONICS, INC. ANY REPRODUCTION IN PART OR WHOLE WITHOUT THE WRITTEN PERMISSION OF INFINITE ELECTRONICS, INC. IS PROHIBITED. THESE COMMODITIES, TECHNOLOGY OR SERVICES ARE BEING EXPORTED FROM THE UNITED STATES IN ACCORDANCE WITH THE EXPORT ADMINISTRATION REGULATIONS. DIVERSION CONTRARY TO U.S. LAW PROHIBITED.

PE DS Rev-D4 Add2

REVISION		DATE	CHANGED BY	APPROVED
ZONE	REV			
	A	10/31/2024	DMAY	AGANWANI
DESCRIPTION				
INITIAL RELEASE				

UNLESS OTHERWISE SPECIFIED, LEADING DIMENSIONS ARE IN INCHES AND TRAILING DIMENSIONS ARE IN MILLIMETERS

TOLERANCES:

.X = ±.2 [5]	FRACTIONS
.XX = ±.02 [0.5]	± 1/32
.XXX = ±.005 [0.13]	ANGLES ± 1°

CABLE LENGTH TOLERANCES:

>12 [305] ≤ 60 [1524] = ±.1 [2.5] / -0
>60 [1524] ≤ 120 [3048] = ±.4 [102] / -0
>120 [3048] ≤ 300 [7620] = ±.6 [15.2] / -0
>300 [7620] = ±.6 [15.2] / -0

ALL DIMENSIONS ARE FOR REFERENCE ONLY. DIMENSIONS OF CRITICAL FEATURES MAY VARY IN SIZE AND LOCATION. COLORS MAY VARY.

Website: www.Pasternack.com
Phone: 1.866.727.8376 | 1.949.261.1920

INTERPRET ALL DIMENSIONS AND TOLERANCES PER ASME Y14.5

SCALE: NONE
SHEET: 1 OF 1

DESCRIPTION: SMP FEMALE RIGHT ANGLE TO SMA MALE CABLE USING RG405 COAX

SIZE	CAGE CODE	DRAWN BY	ITEM NO.
A	53919	DMAY	PE3W08669