

SMP Female to SMA Male Cable Using PE-047SR Coax

RF Cable Assemblies Technical Data Sheet

PE3W08729

Configuration

- Connector 1: SMP Female
- Connector 2: SMA Male
- Cable Type: PE-047SR

Features

- Max Frequency 8 GHz

Applications

- General Purpose
- Laboratory Use

Description

Pasternack's PE3W08729 SMP female to SMA male cable using PE-047SR coax is part of our full line of RF components available for same-day shipping. Pasternack's semi-rigid RF cable assemblies are ideal for high performance applications and can be formed, using proper tooling, to the routing pattern required. This Pasternack SMP to SMA cable assembly has a female to male gender configuration with 50 ohm semi-rigid PE-047SR coax. The PE3W08729 SMP female to SMA male cable assembly operates to 8 GHz.

Custom versions of most RF cable assemblies can be built and shipped same day. Custom cable assembly lengths can be obtained by specifying the desired length on the web site at time of order or by contacting a sales representative. Other available RF cable assembly value added services include connector orientation or clocking, heat shrink booting and custom labeling. RF testing can also be performed to document the electrical performance of your cable assembly.

Electrical Specifications

Description	Minimum	Typical	Maximum	Units
Frequency Range	DC		8	GHz
VSWR			1.4:1	

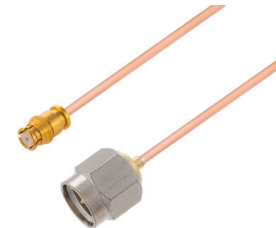
Specifications by Frequency

Description	F1	F2	F3	F4	F5	Units
Frequency	1	2	4	8		GHz
Insertion Loss (Typ.)	0.4	0.5	0.7	1.1		dB/ft
	1.31	1.64	2.3	3.61		dB/m

Electrical Specification Notes:

Insertion Loss does not include the loss of the connectors. Insertion Loss is estimated as 0.1 dB per connector.

Click the following link (or enter part number in "SEARCH" on website) to obtain additional part information including price, inventory and certifications: [SMP Female to SMA Male Cable Using PE-047SR Coax PE3W08729](#)



SMP Female to SMA Male Cable Using PE-047SR Coax

RF Cable Assemblies Technical Data Sheet

PE3W08729

Mechanical Specifications

Cable Assembly

Weight 0.017 lbs [7.71 g]

Cable

Cable Type PE-047SR
Impedance 50 Ohms
Inner Conductor Type Solid
Inner Conductor Material and Plating Copper Clad Steel, Silver
Dielectric Type PTFE
Number of Shields 1
Outer Conductor Material and Plating Copper

Repeated Minimum Bend Radius 0.05 in [1.27 mm]

Connectors

Description	Connector 1	Connector 2
Type	SMP Female	SMA Male
Specification	MIL-STD-348A	
Impedance	50 Ohms	50 Ohms
Mating Cycles		500
Contact Material and Plating	Beryllium Copper, Gold	Beryllium Copper, Gold over Nickel
Contact Plating Specification	MIL-DTL-45204	MIL-G-45204
Dielectric Type	PTFE	PTFE
Body Material and Plating	Beryllium Copper, Gold	Brass, Gold
Body Plating Specification	MIL-DTL-45204	MIL-G-45204
Coupling Nut Material and Plating		Passivated Stainless Steel
Coupling Nut Plating Specification		ASTM-A380
Hex Size		5/16 inch
Torque		8 in-lbs [0.9 Nm]

Environmental Specifications

Temperature

Operating Range -55 to +100 deg C

Compliance Certifications (see [product page](#) for current document)

Plotted and Other Data

Notes:

Click the following link (or enter part number in "SEARCH" on website) to obtain additional part information including price, inventory and certifications: [SMP Female to SMA Male Cable Using PE-047SR Coax PE3W08729](#)



SMP Female to SMA Male Cable Using PE-047SR Coax

RF Cable Assemblies Technical Data Sheet

PE3W08729

How to Order

Part Number Configuration:

PE3W08729

- **xx**

uu

Unit of Measure:
cm = Centimeters
<blank> = Inches
Length
Base Number

Example: PE3W08729-12 = 12 inches long cable
PE3W08729-100cm = 100 cm long cable

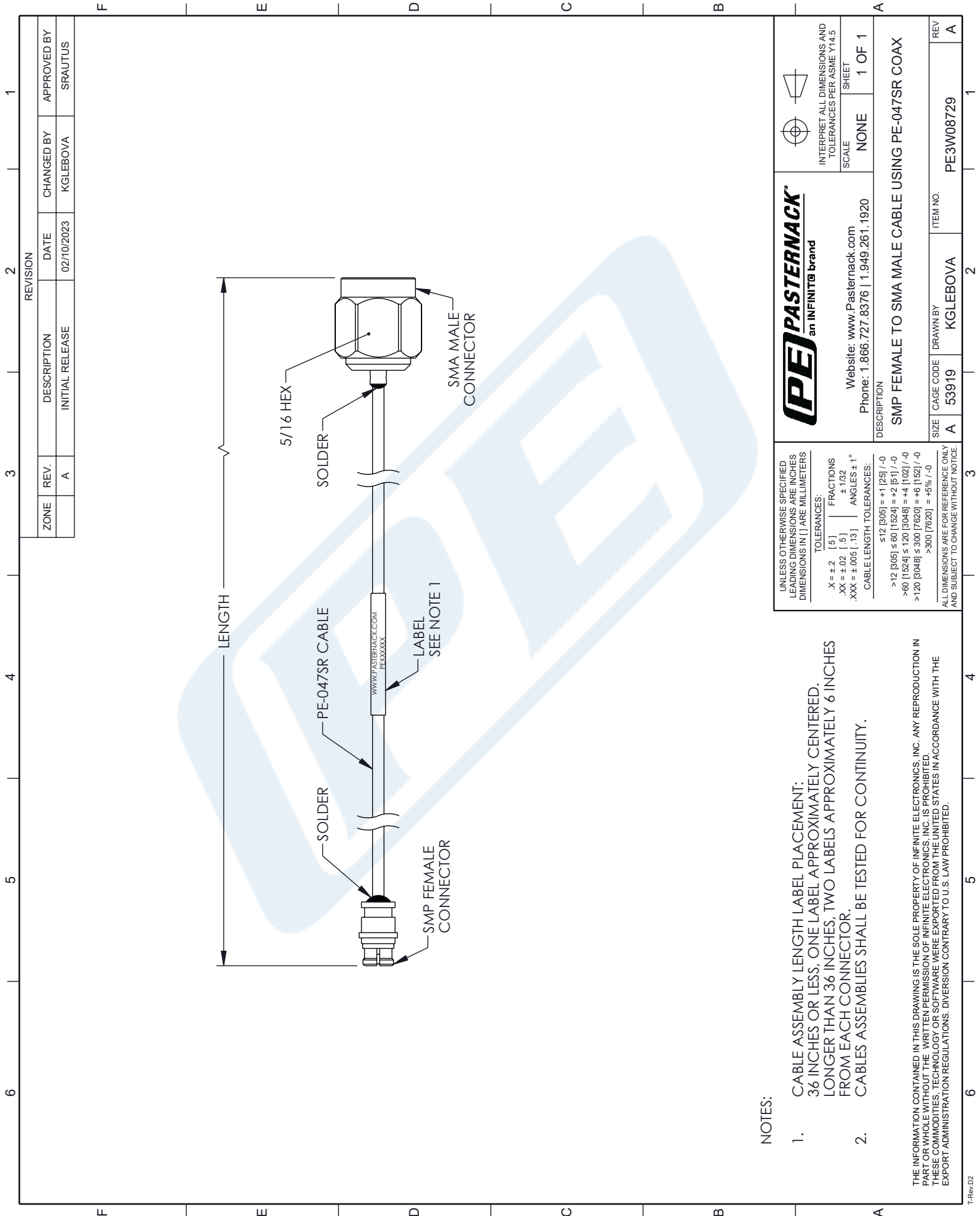
SMP Female to SMA Male Cable Using PE-047SR Coax from Pasternack Enterprises has same day shipment for domestic and International orders. Our RF, microwave and millimeter wave products maintain a 99.4% availability and are part of the broadest selection in the industry.

Click the following link (or enter part number in "SEARCH" on website) to obtain additional part information including price, inventory and certifications: [SMP Female to SMA Male Cable Using PE-047SR Coax PE3W08729](#)

URL: <https://www.pasternack.com/smp-female-to-sma-male-cable-using-pe-047sr-pe3w08729-p.aspx>

The information contained in this document is accurate to the best of our knowledge and representative of the part described herein. It may be necessary to make modifications to the part and/or the documentation of the part, in order to implement improvements. Pasternack reserves the right to make such changes as required. Unless otherwise stated, all specifications are nominal. Pasternack does not make any representation or warranty regarding the suitability of the part described herein for any particular purpose, and Pasternack does not assume any liability arising out of the use of any part or documentation.


PE3W08729 CAD Drawing
SMP Female to SMA Male Cable Using PE-047SR Coax



NOTES:

- CABLE ASSEMBLY LENGTH LABEL PLACEMENT:
36 INCHES OR LESS, ONE LABEL APPROXIMATELY CENTERED.
LONGER THAN 36 INCHES, TWO LABELS APPROXIMATELY 6 INCHES
FROM EACH CONNECTOR.
- CABLES ASSEMBLIES SHALL BE TESTED FOR CONTINUITY.

THE INFORMATION CONTAINED IN THIS DRAWING IS THE SOLE PROPERTY OF INFINITE ELECTRONICS, INC. ANY REPRODUCTION IN PART OR WHOLE WITHOUT THE WRITTEN PERMISSION OF INFINITE ELECTRONICS, INC. IS PROHIBITED.
THESE COMMODITIES, TECHNOLOGY OR SOFTWARE WERE EXPORTED FROM THE UNITED STATES IN ACCORDANCE WITH THE EXPORT ADMINISTRATION REGULATIONS. DIVERSION CONTRARY TO U.S. LAW PROHIBITED.

 PASTERNAK an INFINITE brand	INTERPRET ALL DIMENSIONS AND TOLERANCES PER ASME Y14.5	
	SCALE	NONE
Website: www.Pasternack.com Phone: 1.866.727.8376 1.949.261.1920		SHEET 1 OF 1
DESCRIPTION SMP FEMALE TO SMA MALE CABLE USING PE-047SR COAX		
SIZE A	CAGE CODE 53919	ITEM NO. PE3W08729
DRAWN BY KGLEBOVA		REV A

UNLESS OTHERWISE SPECIFIED LEADING DIMENSIONS ARE INCHES DIMENSIONS IN [] ARE MILLIMETERS	
TOLERANCES:	FRACTIONS
X = ±.2 [.5]	XX = ±.02 [.5]
XX = ±.005 [.13]	XXX = ±.005 [.13]
CABLE LENGTH TOLERANCES:	
≤12 [305] = +1 [25] / -0	
>12 [305] ≤ 60 [1524] = +2 [51] / -0	
>60 [1524] ≤ 120 [3048] = +4 [102] / -0	
>120 [3048] ≤ 300 [7620] = +6 [152] / -0	
>300 [7620] = +5% / -0	
ALL DIMENSIONS ARE FOR REFERENCE ONLY AND SUBJECT TO CHANGE WITHOUT NOTICE.	