



## 3.5mm Male to SMA Male Cable Using PE-SR402FL Coax

### RF Cable Assemblies Technical Data Sheet

**PE3W08848**

#### Configuration

- Connector 1: 3.5mm Male
- Connector 2: SMA Male
- Cable Type: PE-SR402FL

#### Features

- Max Frequency 18 GHz
- Shielding Effectivity > 110 dB
- 69.5% Phase Velocity

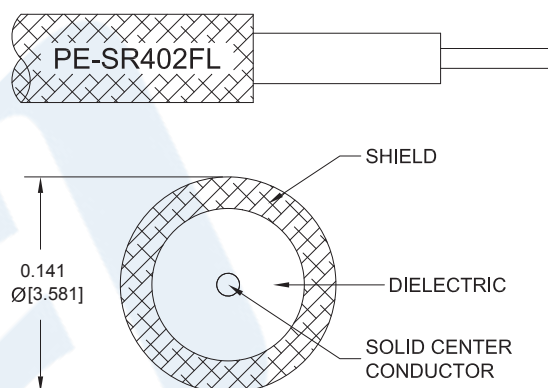
#### Applications

- General Purpose
- Laboratory Use

#### Description

Pasternack's PE3W08848 3.5mm male to SMA male cable using PE-SR402FL coax is part of our full line of RF components available for same-day shipping. Pasternack's formable RF cable assemblies provide an alternative to costly pre-formed semi-rigid assemblies since they are hand formable. This Pasternack 3.5mm to SMA cable assembly has a male to male gender configuration with 50 ohm formable PE-SR402FL coax. The PE3W08848 3.5mm male to SMA male cable assembly operates to 18 GHz.

Custom versions of most RF cable assemblies can be built and shipped same day. Custom cable assembly lengths can be obtained by specifying the desired length on the web site at time of order or by contacting a sales representative. Other available RF cable assembly value added services include connector orientation or clocking, heat shrink booting and custom labeling. RF testing can also be performed to document the electrical performance of your cable assembly.



Click the following link (or enter part number in "SEARCH" on website) to obtain additional part information including price, inventory and certifications: [3.5mm Male to SMA Male Cable Using PE-SR402FL Coax PE3W08848](#)



## 3.5mm Male to SMA Male Cable Using PE-SR402FL Coax

### RF Cable Assemblies Technical Data Sheet

**PE3W08848**

#### Electrical Specifications

Description	Minimum	Typical	Maximum	Units
Frequency Range	DC		18	GHz
VSWR			1.4:1	
Velocity of Propagation		69.5		%
RF Shielding	110			dB
Capacitance		29 [95.14]		pF/ft [pF/m]
DC Resistance Inner Conductor		7.8 [25.59]		Ω/1000ft [Ω/Km]
DC Resistance Outer Conductor		5.5 [18.04]		Ω/1000ft [Ω/Km]

#### Specifications by Frequency

Description	F1	F2	F3	F4	F5	Units
Frequency	1	2	4.5	9	18	GHz
Insertion Loss (Typ.)	0.12	0.162	0.268	0.418	0.65	dB/ft
	0.39	0.53	0.88	1.37	2.13	dB/m

#### Electrical Specification Notes:

Insertion Loss does not include the loss of the connectors. Insertion Loss is estimated as 0.1 dB for the SMA male connector and 0.233 dB for the 3.5mm male connector.

#### Mechanical Specifications

##### Cable Assembly

Weight 0.042 lbs [19.05 g]

##### Cable

Cable Type PE-SR402FL  
Impedance 50 Ohms  
Inner Conductor Type Solid  
Inner Conductor Material and Plating Copper, Silver  
Dielectric Type PTFE  
Number of Shields 1  
Shield Layer 1 Tinned Copper Braid  
Repeated Minimum Bend Radius 0.625 in [15.88 mm]

Click the following link (or enter part number in "SEARCH" on website) to obtain additional part information including price, inventory and certifications: [3.5mm Male to SMA Male Cable Using PE-SR402FL Coax PE3W08848](#)



## 3.5mm Male to SMA Male Cable Using PE-SR402FL Coax

### RF Cable Assemblies Technical Data Sheet

**PE3W08848**

#### Connectors

Description	Connector 1	Connector 2
Type	3.5mm Male	SMA Male
Impedance	50 Ohms	50 Ohms
Mating Cycles	500	
Contact Material and Plating	Beryllium Copper, Gold over Nickel	
Contact Plating Specification	50 µin minimum	
Dielectric Type	PCTFE	
Body Material and Plating	Passivated Stainless Steel	Brass, Gold over Nickel
Body Plating Specification	SAE-AMS-2700	
Coupling Nut Material and Plating	Passivated Stainless Steel	Passivated Stainless Steel
Coupling Nut Plating Specification	SAE-AMS-2700	
Hex Size	5/16 inch	5/16 inch
Torque	8 in-lbs [0.9 Nm]	8 in-lbs [0.9 Nm]

#### Environmental Specifications

##### Temperature

Operating Range -55 to +125 deg C

**Compliance Certifications** (see [product page](#) for current document)

#### Plotted and Other Data

Notes:

Click the following link (or enter part number in "SEARCH" on website) to obtain additional part information including price, inventory and certifications: [3.5mm Male to SMA Male Cable Using PE-SR402FL Coax PE3W08848](#)



## 3.5mm Male to SMA Male Cable Using PE-SR402FL Coax

### RF Cable Assemblies Technical Data Sheet

**PE3W08848**

#### How to Order

Part Number Configuration:

**PE3W08848**

- **xx**

**uu**

Unit of Measure:  
cm = Centimeters  
<blank> = Inches  
Length  
Base Number

Example: PE3W08848-12 = 12 inches long cable  
PE3W08848-100cm = 100 cm long cable

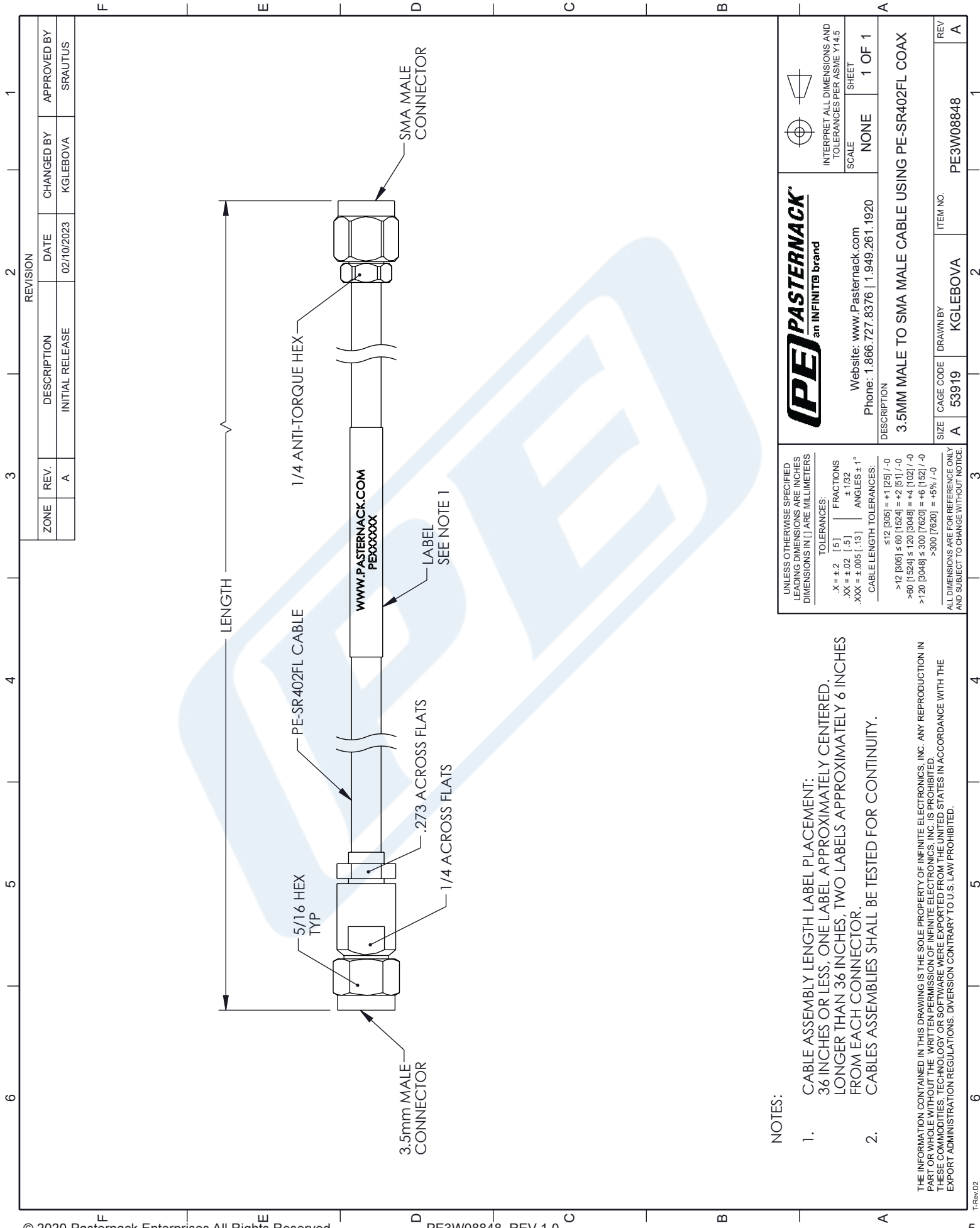
3.5mm Male to SMA Male Cable Using PE-SR402FL Coax from Pasternack Enterprises has same day shipment for domestic and International orders. Our RF, microwave and millimeter wave products maintain a 99.4% availability and are part of the broadest selection in the industry.

Click the following link (or enter part number in "SEARCH" on website) to obtain additional part information including price, inventory and certifications: [3.5mm Male to SMA Male Cable Using PE-SR402FL Coax PE3W08848](https://www.pasternack.com/3.5mm-male-to-sma-male-cable-using-pe-sr402fl-pe3w08848-p.aspx)

URL: <https://www.pasternack.com/3.5mm-male-to-sma-male-cable-using-pe-sr402fl-pe3w08848-p.aspx>

The information contained in this document is accurate to the best of our knowledge and representative of the part described herein. It may be necessary to make modifications to the part and/or the documentation of the part, in order to implement improvements. Pasternack reserves the right to make such changes as required. Unless otherwise stated, all specifications are nominal. Pasternack does not make any representation or warranty regarding the suitability of the part described herein for any particular purpose, and Pasternack does not assume any liability arising out of the use of any part or documentation.



PE3W08848 CAD Drawing  
3.5mm Male to SMA Male Cable Using PE-SR402FL Coax



NOTES:

1. CABLE ASSEMBLY LENGTH LABEL PLACEMENT:  
36 INCHES OR LESS, ONE LABEL APPROXIMATELY CENTERED.  
LONGER THAN 36 INCHES, TWO LABELS APPROXIMATELY 6 INCHES  
FROM EACH CONNECTOR.
2. CABLES ASSEMBLIES SHALL BE TESTED FOR CONTINUITY.

THE INFORMATION CONTAINED IN THIS DRAWING IS THE SOLE PROPERTY OF INFINITE ELECTRONICS, INC. ANY REPRODUCTION IN PART OR WHOLE WITHOUT THE WRITTEN PERMISSION OF INFINITE ELECTRONICS, INC. IS PROHIBITED.  
THESE COMMODITIES, TECHNOLOGY OR SOFTWARE WERE EXPORTED FROM THE UNITED STATES IN ACCORDANCE WITH THE EXPORT ADMINISTRATION REGULATIONS. DIVERSION CONTRARY TO U.S. LAW PROHIBITED.

 <b>PASTERNAK</b> an INFINITE brand		 INTERPRET ALL DIMENSIONS AND TOLERANCES PER ASME Y14.5	
Website: <a href="http://www.Pasternack.com">www.Pasternack.com</a> Phone: 1.866.727.8376   1.949.261.1920		SCALE	NONE
DESCRIPTION		SHEET	1 OF 1
3.5MM MALE TO SMA MALE CABLE USING PE-SR402FL COAX			
SIZE	CAGE CODE	DRAWN BY	ITEM NO.
A	53919	KGLEBOVA	PE3W08848
REV			A