

SMP Female to SMA Male Cable Using PE-047SR Coax



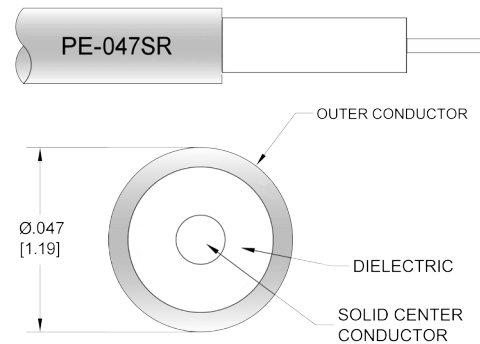
PE3W08935

Configuration

- Connector 1: SMP Female
- Connector 2: SMA Male
- Cable Type: PE-047SR
- Coax Flex Type: Semi-Rigid

Features

- Max Frequency 10 GHz



Applications

- General Purpose
- Laboratory Use

Description

Pasternack's PE3W08935 SMP female to SMA male cable using PE-047SR coax is part of our full line of RF components available for same-day shipping. Pasternack's semi-rigid RF cable assemblies are ideal for high performance applications and can be formed, using proper tooling, to the routing pattern required. This Pasternack SMP to SMA cable assembly has a female to male gender configuration with 50 ohm semi-rigid PE-047SR coax. The PE3W08935 SMP female to SMA male cable assembly operates to 10 GHz.

Custom versions of most RF cable assemblies can be built and shipped same day. Custom cable assembly lengths can be obtained by specifying the desired length on the web site at time of order or by contacting a sales representative. Other available RF cable assembly value added services include connector orientation or clocking, heat shrink booting and custom labeling. RF testing can also be performed to document the electrical performance of your cable assembly.

Electrical Specifications

Description	Minimum	Typical	Maximum	Units
Frequency Range	DC		10	GHz
VSWR			1.25:1	

Specifications by Frequency

SMP Female to SMA Male Cable Using PE-047SR Coax



PE3W08935

Part Number	Length	Description	F1	F2	F3	F4	Units	Weight (lbs)
		Frequency	1000	2500	5000	10000	MHz	
PE3W08935	Custom Lengths Available	Insertion Loss (Typ.)	0.4	0.55	0.8	1.3	dB/ft	
			1.32	1.81	2.63	4.27	dB/m	
PE3W08935-3	3 inch	Insertion Loss (Typ.)	0.51	0.55	0.61	0.74	dB	0.01
PE3W08935-6	6 inch	Insertion Loss (Typ.)	0.61	0.69	0.81	1.06	dB	0.011
PE3W08935-12	12 inch	Insertion Loss (Typ.)	0.81	0.96	1.21	1.71	dB	0.013
PE3W08935-18	18 inch	Insertion Loss (Typ.)	1.01	1.24	1.61	2.36	dB	0.016
PE3W08935-60	60 inch	Insertion Loss (Typ.)	2.41	3.16	4.41	6.91	dB	0.03

The insertion loss data for the base model does not include loss due to the connectors. Each length includes insertion loss due to the connectors.

Loss due to Connector 1:	0.31 dB
Loss due to Connector 2:	0.1 dB
Base Weight:	0.013 pounds
Additional Weight per Inch:	0.00034 pounds

Mechanical Specifications

Cable Assembly

Width/Diameter	0.5 in [12.7 mm]
Weight	0.013 lbs [5.9 g]

Cable

Cable Type	PE-047SR
Impedance	50 Ohms
Inner Conductor Type	Solid
Inner Conductor Material and Plating	Copper Clad Steel, Silver
Dielectric Type	PTFE
Number of Shields	1
Outer Conductor 1 Material and Plating	Copper
Repeated Minimum Bend Radius	0.05 in [1.27 mm]

SMP Female to SMA Male Cable Using PE-047SR Coax



PE3W08935

Connectors

Description	Connector 1	Connector 2
Type	SMP Female	SMA Male
Specification	MIL-STD-348A	MIL-STD-348
Impedance	50 Ohms	50 Ohms
Configuration	Straight	Straight
Mating Cycles		500
Contact Material and Plating	Beryllium Copper, Gold	Beryllium Copper, Gold over Nickel
Contact Plating Specification	MIL-DTL-45204	50 µin minimum
Dielectric Type	PTFE	PTFE
Body Material and Plating	Beryllium Copper, Gold	Brass, Gold over Nickel
Body Plating Specification	MIL-DTL-45204	50 µin minimum
Coupling Nut Material and Plating		Brass, Nickel
Coupling Nut Plating Specification		50 µin minimum
Hex Size		5/16 inch
Torque		7 in-lbs 0.79 Nm

Environmental Specifications

Operating Range Temperature -55 to +100 deg C

Compliance Certifications (see [product page](#) for current document)

Plotted and Other Data

Notes:

SMP Female to SMA Male Cable Using PE-047SR Coax



PE3W08935

Typical Performance Data

How to Order

Part Number Configuration:

PE3W08935

- XX

uu

- Unit of Measure:
cm = Centimeters
<blank> = Inches

- Length

- Base Number

Example: PE3W08935-12 = 12 inches long cable
PE3W08935-100cm = 100 cm long cable

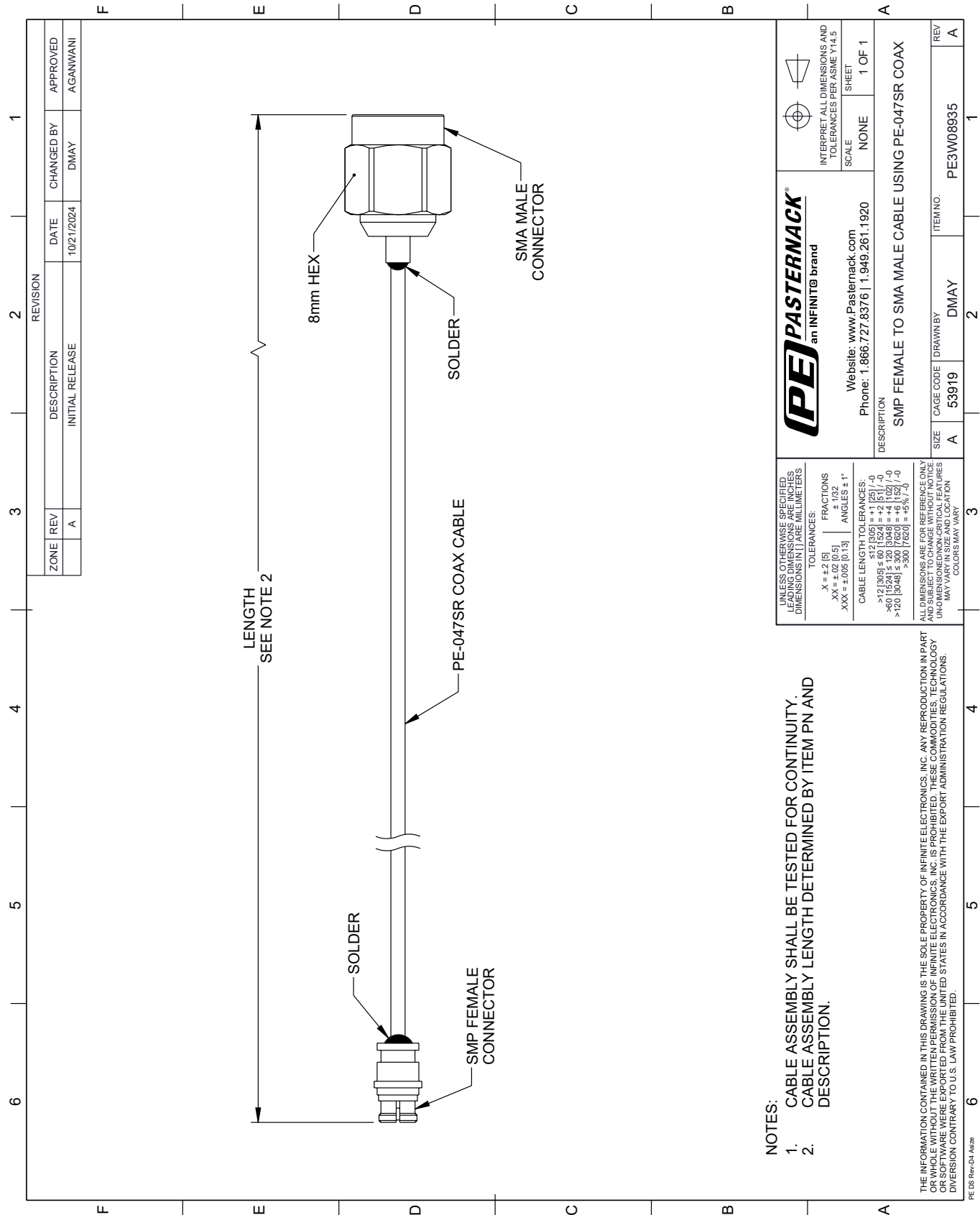
SMP Female to SMA Male Cable Using PE-047SR Coax from Pasternack Enterprises has same day shipment for domestic and International orders. Our RF, microwave and millimeter wave products maintain a 99.4% availability and are part of the broadest selection in the industry.

Click the following link (or enter part number in "SEARCH" on website) to obtain additional part information including price, inventory and certifications: [SMP Female to SMA Male Cable Using PE-047SR Coax PE3W08935](#)

URL: <https://www.pasternack.com/smp-female-to-sma-male-cable-using-pe-047sr-pe3w08935-p.aspx>

The information contained within this document is accurate to the best of our knowledge and representative of the part described herein. It may be necessary to make modifications to the part and/or the documentation of the part in order to implement improvements. Pasternack Enterprises reserves the right to make such changes as required. Unless otherwise stated, all specifications are nominal. Pasternack Enterprises does not make any representation or warranty regarding the suitability of the part described herein for any particular purpose, and Pasternack Enterprises does not assume liability arising out of the use of any part or document.

PE3W08935 CAD Drawing
SMP Female to SMA Male Cable Using PE-047SR Coax



- NOTES:
- 1. CABLE ASSEMBLY SHALL BE TESTED FOR CONTINUITY.
 - 2. CABLE ASSEMBLY LENGTH DETERMINED BY ITEM PN AND DESCRIPTION.

UNLESS OTHERWISE SPECIFIED, LEADING DIMENSIONS ARE IN INCHES. DIMENSIONS IN [] ARE IN MILLIMETERS.		PE PASTERNAK an INFINITE® brand		INTERPRET ALL DIMENSIONS AND TOLERANCES PER ASME Y14.5	
TOLERANCES:		Website: www.Pasternack.com		SCALE: NONE	
.X = ±.2 [5]		Phone: 1.866.727.8376 1.949.261.1920		SHEET 1 OF 1	
.XX = ±.02 [0.5]		DESCRIPTION		SMP FEMALE TO SMA MALE CABLE USING PE-047SR COAX	
.XXX = ±.005 [0.13]		CABLE LENGTH TOLERANCES:		SIZE A	
ANGLES ± 1°		>12 [305] ≤ 60 [1524] = ±1 [25] / -0		CAGE CODE 53919	
CABLE LENGTH TOLERANCES:		>60 [1524] ≤ 120 [3048] = ±4 [102] / -0		DRAWN BY DMAY	
ALL DIMENSIONS ARE FOR REFERENCE ONLY. UNLESS OTHERWISE SPECIFIED, DIMENSIONS MAY VARY IN SIZE AND LOCATION. COLORS MAY VARY.		>120 [3048] ≤ 300 [7620] = ±5% / -0		ITEM NO. PE3W08935	
THE INFORMATION CONTAINED IN THIS DRAWING IS THE SOLE PROPERTY OF INFINITE ELECTRONICS, INC. ANY REPRODUCTION IN PART OR WHOLE WITHOUT THE WRITTEN PERMISSION OF INFINITE ELECTRONICS, INC. IS PROHIBITED. THESE COMMODITIES, TECHNOLOGY OR SOFTWARE WERE EXPORTED FROM THE UNITED STATES IN ACCORDANCE WITH THE EXPORT ADMINISTRATION REGULATIONS. DIVERSION CONTRARY TO U.S. LAW PROHIBITED.		REV A		1	