

SSMA Female 4 Hole Flange to SSMA Female 4 Hole Flange Cable Using Tinned RG405 Coax

RF Cable Assemblies Technical Data Sheet

PE3W09574

Configuration

- Connector 1: SSMA Female 4 Hole Flange
- Connector 2: SSMA Female 4 Hole Flange
- Cable Type: RG405 Tinned

Applications

- General Purpose
- Laboratory Use

Description

Pasternack's PE3W09574 SSMA female 4 hole flange to SSMA female 4 hole flange cable using tinned RG405 coax is part of our full line of RF components available for same-day shipping. Pasternack's semi-rigid RF cable assemblies are ideal for high performance applications and can be formed, using proper tooling, to the routing pattern required. This Pasternack SSMA to SSMA cable assembly has a female to female gender configuration with 50 ohm semi-rigid RG405 tinned coax. Our RF cable assembly with SSMA 4 hole flange interface allows designers to create external connections on their product enclosures, and can be used in a variety of other rack mount and panel mount applications.

Custom versions of most RF cable assemblies can be built and shipped same day. Custom cable assembly lengths can be obtained by specifying the desired length on the web site at time of order or by contacting a sales representative. Other available RF cable assembly value added services include connector orientation or clocking, heat shrink booting and custom labeling. RF testing can also be performed to document the electrical performance of your cable assembly.

Mechanical Specifications

Cable Assembly

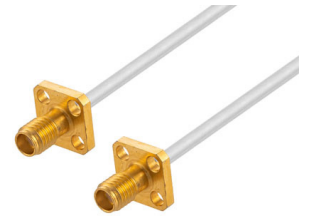
Weight 0.023 lbs [10.43 g]

Cable

Cable Type RG405 Tinned
Impedance 50 Ohms
Inner Conductor Type Solid
Inner Conductor Material and Plating Copper Clad Steel, Silver
Dielectric Type PTFE
Number of Shields 1
Shield Layer 1 Tinned Copper

One Time Minimum Bend Radius 0.05 in [1.27 mm]

Click the following link (or enter part number in "SEARCH" on website) to obtain additional part information including price, inventory and certifications: [SSMA Female 4 Hole Flange to SSMA Female 4 Hole Flange Cable Using Tinned RG405 Coax PE3W09574](#)



SSMA Female 4 Hole Flange to SSMA Female 4 Hole Flange Cable Using Tinned RG405 Coax

RF Cable Assemblies Technical Data Sheet

PE3W09574

Connectors

Description	Connector 1	Connector 2
Type	SSMA Female 4 Hole Flange	SSMA Female 4 Hole Flange
Specification	MIL-C-39012	MIL-C-39012
Impedance	50 Ohms	50 Ohms
Contact Material and Plating	Gold	Gold
Contact Plating Specification	MIL-G-45204	MIL-G-45204
Dielectric Type	Teflon	Teflon
Body Material and Plating	Stainless Steel, Gold	Stainless Steel, Gold
Body Plating Specification	MIL-G-45204	MIL-G-45204

Environmental Specifications

Temperature

Operating Range

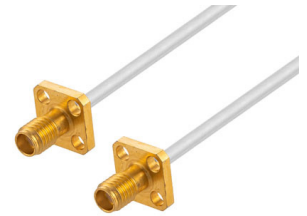
-55 to +125 deg C

Compliance Certifications (see [product page](#) for current document)

Plotted and Other Data

Notes:

Click the following link (or enter part number in "SEARCH" on website) to obtain additional part information including price, inventory and certifications: [SSMA Female 4 Hole Flange to SSMA Female 4 Hole Flange Cable Using Tinned RG405 Coax PE3W09574](#)



SSMA Female 4 Hole Flange to SSMA Female 4 Hole Flange Cable Using Tinned RG405 Coax

RF Cable Assemblies Technical Data Sheet

PE3W09574

How to Order

Part Number Configuration:

PE3W09574

- **xx**

uu

Unit of Measure:

cm = Centimeters

<blank> = Inches

Length

Base Number

Example: PE3W09574-12 = 12 inches long cable
PE3W09574-100cm = 100 cm long cable

SSMA Female 4 Hole Flange to SSMA Female 4 Hole Flange Cable Using Tinned RG405 Coax from Pasternack Enterprises has same day shipment for domestic and International orders. Our RF, microwave and millimeter wave products maintain a 99.4% availability and are part of the broadest selection in the industry.

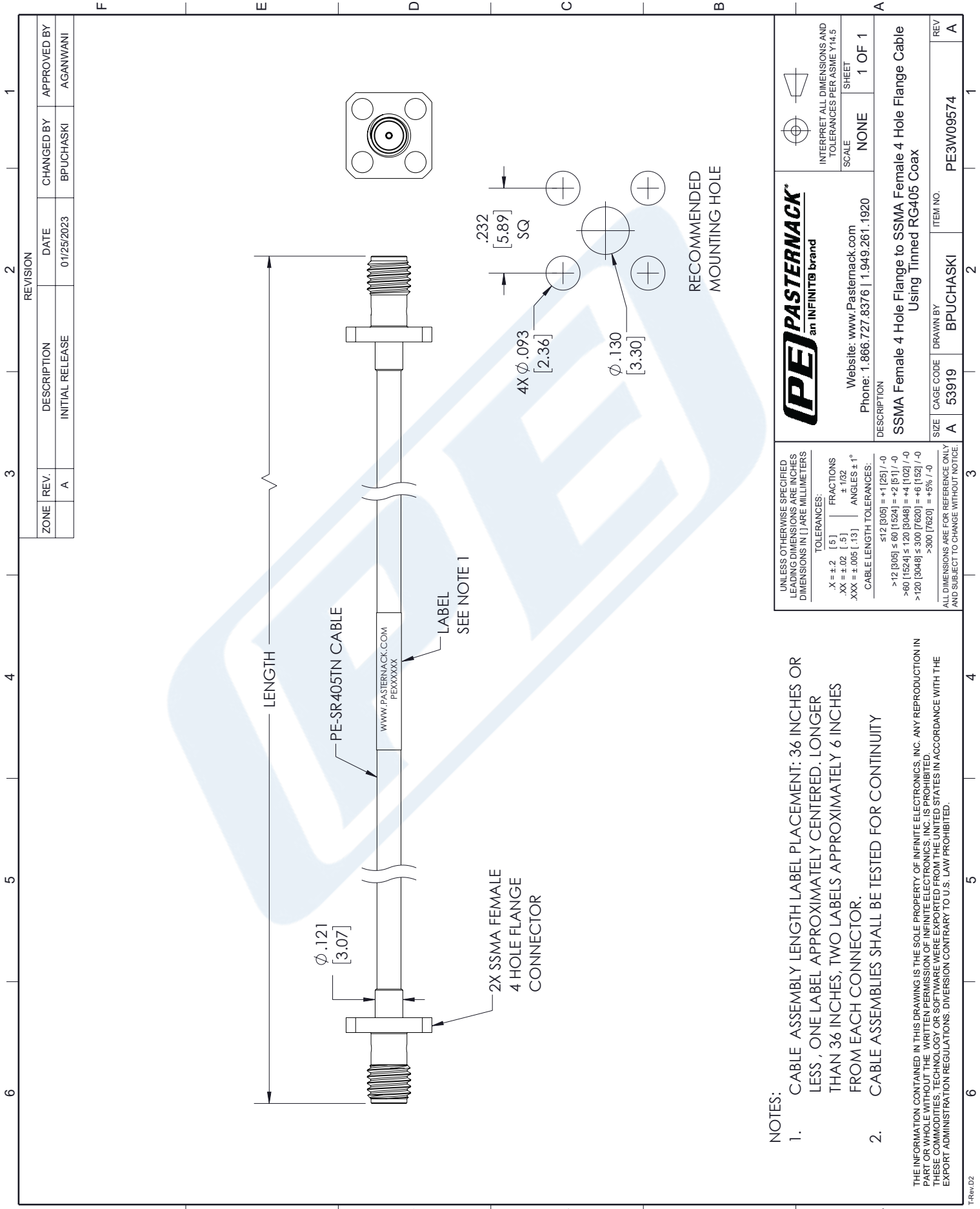
Click the following link (or enter part number in "SEARCH" on website) to obtain additional part information including price, inventory and certifications: [SSMA Female 4 Hole Flange to SSMA Female 4 Hole Flange Cable Using Tinned RG405 Coax PE3W09574](https://www.pasternack.com/ssma-female-4-hole-flange-to-ssma-female-4-hole-flange-cable-using-tinned-rg405-pe3w09574)

URL: <https://www.pasternack.com/ssma-female-4-hole-flange-to-ssma-female-4-hole-flange-cable-using-tinned-rg405-pe3w09574-p.aspx>

The information contained in this document is accurate to the best of our knowledge and representative of the part described herein. It may be necessary to make modifications to the part and/or the documentation of the part, in order to implement improvements. Pasternack reserves the right to make such changes as required. Unless otherwise stated, all specifications are nominal. Pasternack does not make any representation or warranty regarding the suitability of the part described herein for any particular purpose, and Pasternack does not assume any liability arising out of the use of any part or documentation.

PE3W09574 CAD Drawing

SSMA Female 4 Hole Flange to SSMA Female 4 Hole Flange Cable Using Tinned RG405 Coax



NOTES:

1. CABLE ASSEMBLY LENGTH LABEL PLACEMENT: 36 INCHES OR LESS, ONE LABEL APPROXIMATELY CENTERED. LONGER THAN 36 INCHES, TWO LABELS APPROXIMATELY 6 INCHES FROM EACH CONNECTOR.
2. CABLE ASSEMBLIES SHALL BE TESTED FOR CONTINUITY

THE INFORMATION CONTAINED IN THIS DRAWING IS THE SOLE PROPERTY OF INFINITE ELECTRONICS, INC. ANY REPRODUCTION IN PART OR WHOLE WITHOUT THE WRITTEN PERMISSION OF INFINITE ELECTRONICS, INC. IS PROHIBITED. THESE COMMODITIES, TECHNOLOGY OR SOFTWARE WERE EXPORTED FROM THE UNITED STATES IN ACCORDANCE WITH THE EXPORT ADMINISTRATION REGULATIONS. DIVERSION CONTRARY TO U.S. LAW PROHIBITED.

UNLESS OTHERWISE SPECIFIED LEADING DIMENSIONS ARE INCHES DIMENSIONS IN [] ARE MILLIMETERS	
TOLERANCES:	
X = ±.2 [5]	FRACTIONS ± 1/32
.XX = ±.02 [.5]	ANGLES ± 1°
.XXX = ±.005 [.13]	
CABLE LENGTH TOLERANCES:	
≤ 12 [305]	± .1 [25] / -0
> 12 [305] ≤ 60 [1524]	± .2 [5] / -0
> 60 [1524] ≤ 120 [3048]	± .4 [102] / -0
> 120 [3048] ≤ 300 [7620]	± .6 [152] / -0
> 300 [7620]	± .5% / -0
ALL DIMENSIONS ARE FOR REFERENCE ONLY AND SUBJECT TO CHANGE WITHOUT NOTICE.	

PE PASTERNAK an INFINITO brand		INTERPRET ALL DIMENSIONS AND TOLERANCES PER ASME Y14.5	
Website: www.Pasternack.com		SCALE	SHEET
Phone: 1.866.727.8376 1.949.261.1920		NONE	1 OF 1
DESCRIPTION			
SSMA Female 4 Hole Flange to SSMA Female 4 Hole Flange Cable Using Tinned RG405 Coax			
SIZE	CAGE CODE	DRAWN BY	ITEM NO.
A	53919	BPUCHASKI	PE3W09574
REV			A