

Plenum 4.3-10 Male to 4.3-10 Male Low PIM Cable
12 Inch Length Using SPP-250-LLPL Coax, LF Solder



PE3W10901LF-12

Configuration

- Connector 1: 4.3-10 Male
- Connector 2: 4.3-10 Male
- Cable Type: SPP-250-LLPL
- Coax Flex Type: Corrugated

Features

- Max Frequency 6 GHz
- Low PIM: -160 dBc Max
- Shielding Effectivity > 100 dB
- 76% Phase Velocity
- FEP Jacket



Applications

- General Purpose
- Laboratory Use
- Low PIM Applications

Description

Pasternack's PE3W10901LF-12 4.3-10 male to 4.3-10 male 12 inch cable using SPP-250-LLPL coax is part of our full line of RF components available for same-day shipping. Pasternack's corrugated RF cable assemblies are ideal for applications where durability and high power are needed. This Pasternack 4.3-10 to 4.3-10 cable assembly has a male to male gender configuration with 50 ohm corrugated SPP-250-LLPL coax. The PE3W10901LF-12 4.3-10 male to 4.3-10 male cable assembly operates to 6 GHz. Our low PIM design also offers excellent passive intermodulation performance with PIM levels better than -160 dBc.

Custom versions of most RF cable assemblies can be built and shipped same day. Custom cable assembly lengths can be obtained by specifying the desired length on the web site at time of order or by contacting a sales representative. Other available RF cable assembly value added services include connector orientation or clocking, heat shrink booting and custom labeling. RF testing can also be performed to document the electrical performance of your cable assembly.

Electrical Specifications

Description	Minimum	Typical	Maximum	Units
Frequency Range	DC		6	GHz
VSWR			1.4:1	
Velocity of Propagation		76		%
RF Shielding	100			dB
Passive Intermodulation IM3 (2x43dBm Tones) at 850 MHz or 1900 MHz			-160	dBc
Capacitance		27 [88.58]		pF/ft [pF/m]
Inductance		0.067 [0.22]		uH/ft [uH/m]
DC Resistance Inner Conductor		3 [9.84]		Ohms/1000ft [Ohms/Km]

Specifications by Frequency

Plenum 4.3-10 Male to 4.3-10 Male Low PIM Cable
12 Inch Length Using SPP-250-LLPL Coax, LF Solder



PE3W10901LF-12

Part Number	Length	Description	F1	F2	F3	F4	Units	Weight (lbs)
			Frequency	500	1000	2500	6000	
PE3W10901LF	Custom Lengths Available	Insertion Loss (Typ.)	0.039	0.054	0.093	0.148	dB/ft	
			0.13	0.18	0.31	0.49	dB/m	
PE3W10901LF-12	12 In	Insertion Loss (Typ.)	0.44	0.46	0.5	0.55	dB	0.23
PE3W10901LF-24	24 In	Insertion Loss (Typ.)	0.48	0.51	0.59	0.7	dB	0.301
PE3W10901LF-36	36 In	Insertion Loss (Typ.)	0.52	0.57	0.68	0.85	dB	0.371
PE3W10901LF-60	60 In	Insertion Loss (Typ.)	0.6	0.67	0.87	1.14	dB	0.511
PE3W10901LF-50CM	50 CM	Insertion Loss (Typ.)	0.47	0.49	0.56	0.65	dB	0.275

The insertion loss data for the base model does not include loss due to the connectors. Each length includes insertion loss due to the connectors.

Loss due to Connector 1:	0.2 dB
Loss due to Connector 2:	0.2 dB
Base Weight:	0.23 pounds
Additional Weight per Inch:	0.00584 pounds

Mechanical Specifications

Cable Assembly

Length	12 in [304.8 mm]
Width/Diameter	.5 in [12.7 mm]
Weight	0.23 lbs [104.33 g]

Cable

Cable Type	SPP-250-LLPL
Impedance	50 Ohms
Inner Conductor Type	Solid
Inner Conductor Material and Plating	Copper
Dielectric Type	PTFE
Number of Shields	1
Outer Conductor 1 Material and Plating	Copper
Jacket Material	FEP, Blue
Jacket Diameter	0.28 in [7.11 mm]
One Time Minimum Bend Radius	1.25 in [31.75 mm]
Bending Moment	0.8 lbs-ft [1.08 N-m]

Plenum 4.3-10 Male to 4.3-10 Male Low PIM Cable
12 Inch Length Using SPP-250-LLPL Coax, LF Solder



PE3W10901LF-12

Connectors

Description	Connector 1	Connector 2
Type	4.3-10 Male	4.3-10 Male
Impedance	50 Ohms	50 Ohms
Configuration	Straight	Straight
Contact Material and Plating	Brass, Silver	Brass, Silver
Dielectric Type	PTFE	PTFE
Body Material and Plating	Brass, Tri-Metal	Brass, Tri-Metal
Coupling Nut Material and Plating	Brass, Tri-Metal	Brass, Tri-Metal

Environmental Specifications

Operating Range Temperature -40 to +155 deg C

Compliance Certifications (see [product page](#) for current document)

Plotted and Other Data

Notes:

Plenum 4.3-10 Male to 4.3-10 Male Low PIM Cable
12 Inch Length Using SPP-250-LLPL Coax, LF Solder



PE3W10901LF-12

Typical Performance Data

How to Order

Part Number Configuration:

PE3W10901LF - xx uu

_____ Unit of Measure:
 cm = Centimeters
 <blank> = Inches
 _____ Length
 _____ Base Number

Example: PE3W10901LF-12 = 12 inches long cable
PE3W10901LF-100cm = 100 cm long cable

Plenum 4.3-10 Male to 4.3-10 Male Low PIM Cable 12 Inch Length Using SPP-250-LLPL Coax, LF Solder from Pasternack Enterprises has same day shipment for domestic and International orders. Our RF, microwave and millimeter wave products maintain a 99.4% availability and are part of the broadest selection in the industry.

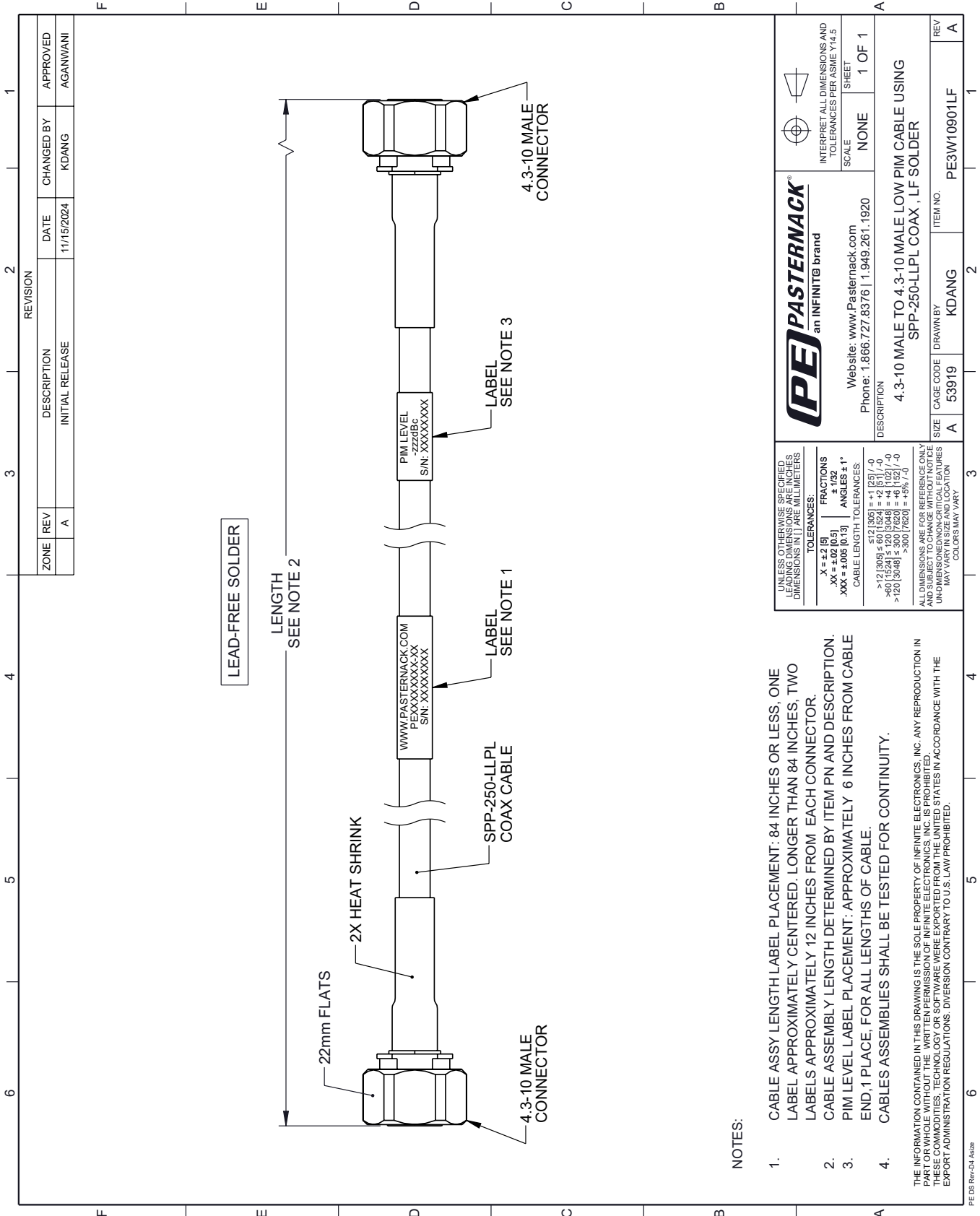
Click the following link (or enter part number in "SEARCH" on website) to obtain additional part information including price, inventory and certifications: [Plenum 4.3-10 Male to 4.3-10 Male Low PIM Cable 12 Inch Length Using SPP-250-LLPL Coax, LF Solder PE3W10901LF-12](https://www.pasternack.com/plenum-4.3-10-male-to-4.3-10-male-low-pim-cable-12-inch-length-using-spp-250-llpl-coax-lf-solder-pe3w10901lf-12)

URL: <https://www.pasternack.com/plenum-4.3-10-male-to-4.3-10-male-low-pim-cable-12-inch-length-using-spp-250-llpl-lf-solder-pe3w10901lf-12-p.aspx>

The information contained within this document is accurate to the best of our knowledge and representative of the part described herein. It may be necessary to make modifications to the part and/or the documentation of the part in order to impliment improvements. Pasternack Enterprises reserves the right to make such changes as required. Unless otherwise stated, all specifications are nominal. Pasternack Enterprises does not make any representation or warranty regarding the suitability of the part described herein for any particular purpose, and Pasternack Enterprises does not assume liability arising out of the use of any part or document.

PE3W10901LF-12 CAD Drawing


Plenum 4.3-10 Male to 4.3-10 Male Low PIM Cable 12 Inch Length Using SPP-250-LLPL Coax, LF Solder



NOTES:

- CABLE ASSY LENGTH LABEL PLACEMENT: 84 INCHES OR LESS, ONE LABEL APPROXIMATELY CENTERED. LONGER THAN 84 INCHES, TWO LABELS APPROXIMATELY 12 INCHES FROM EACH CONNECTOR.
- CABLE ASSEMBLY LENGTH DETERMINED BY ITEM PN AND DESCRIPTION.
- PIM LEVEL LABEL PLACEMENT: APPROXIMATELY 6 INCHES FROM CABLE END, 1 PLACE, FOR ALL LENGTHS OF CABLE.
- CABLES ASSEMBLIES SHALL BE TESTED FOR CONTINUITY.

THE INFORMATION CONTAINED IN THIS DRAWING IS THE SOLE PROPERTY OF INFINITE ELECTRONICS, INC. ANY REPRODUCTION IN PART OR WHOLE WITHOUT THE WRITTEN PERMISSION OF INFINITE ELECTRONICS, INC. IS PROHIBITED. THESE COMMODITIES, TECHNOLOGY OR SOFTWARE WERE EXPORTED FROM THE UNITED STATES IN ACCORDANCE WITH THE EXPORT ADMINISTRATION REGULATIONS. DIVERSION CONTRARY TO U.S. LAW PROHIBITED.

 PASTERNAK an INFINITB brand	Website: www.Pasternack.com Phone: 1.866.727.8376 1.949.261.1920	INTERPRET ALL DIMENSIONS AND TOLERANCES PER ASME Y14.5 SCALE: NONE SHEET: 1 OF 1
	DESCRIPTION: 4.3-10 MALE TO 4.3-10 MALE LOW PIM CABLE USING SPP-250-LLPL COAX, LF SOLDER	
SIZE: A	CAGE CODE: 53919	DRAWN BY: KDANG
ITEM NO.: PE3W10901LF		REV: A

UNLESS OTHERWISE SPECIFIED, LEADING DIMENSIONS ARE IN INCHES. DIMENSIONS IN [] ARE MILLIMETERS.

TOLERANCES:
 .X = ±.2 [5]
 .XX = ±.02 [0.5]
 .XXX = ±.005 [0.13]

FRACTIONS
 ± 1/32
 ANGLES ± 1°

CABLE LENGTH TOLERANCES:
 ≤ 12 [305] ± .60 [1524] = +.1 [25] / -0
 > 12 [305] ≤ 60 [1524] = +.4 [1027] / -0
 > 60 [1524] ≤ 120 [3048] = +.4 [1027] / -0
 > 120 [3048] ≤ 300 [7620] = +.5% / -0

ALL DIMENSIONS ARE FOR REFERENCE ONLY. UNDIMENSIONED NON-CRITICAL FEATURES MAY VARY IN SIZE AND LOCATION. COLORS MAY VARY.