

Plenum 4.3-10 Male to 4.3-10 Male Low PIM Cable  
60 Inch Length Using SPP-250-LLPL Coax, LF Solder



**PE3W10901LF-60**

**Configuration**

- Connector 1: 4.3-10 Male
- Connector 2: 4.3-10 Male
- Cable Type: SPP-250-LLPL
- Coax Flex Type: Corrugated

**Features**

- Max Frequency 6 GHz
- Low PIM: -160 dBc Max
- Shielding Effectivity > 100 dB
- 76% Phase Velocity
- FEP Jacket



**Applications**

- General Purpose
- Laboratory Use
- Low PIM Applications

**Description**

Pasternack's PE3W10901LF-60 4.3-10 male to 4.3-10 male 60 inch cable using SPP-250-LLPL coax is part of our full line of RF components available for same-day shipping. Pasternack's corrugated RF cable assemblies are ideal for applications where durability and high power are needed. This Pasternack 4.3-10 to 4.3-10 cable assembly has a male to male gender configuration with 50 ohm corrugated SPP-250-LLPL coax. The PE3W10901LF-60 4.3-10 male to 4.3-10 male cable assembly operates to 6 GHz. Our low PIM design also offers excellent passive intermodulation performance with PIM levels better than -160 dBc.

Custom versions of most RF cable assemblies can be built and shipped same day. Custom cable assembly lengths can be obtained by specifying the desired length on the web site at time of order or by contacting a sales representative. Other available RF cable assembly value added services include connector orientation or clocking, heat shrink booting and custom labeling. RF testing can also be performed to document the electrical performance of your cable assembly.

**Electrical Specifications**

Description	Minimum	Typical	Maximum	Units
Frequency Range	DC		6	GHz
VSWR			1.4:1	
Velocity of Propagation		76		%
RF Shielding	100			dB
Passive Intermodulation IM3 (2x43dBm Tones) at 850 MHz or 1900 MHz			-160	dBc
Capacitance		27 [88.58]		pF/ft [pF/m]
Inductance		0.067 [0.22]		uH/ft [uH/m]
DC Resistance Inner Conductor		3 [9.84]		Ohms/1000ft [Ohms/Km]

**Specifications by Frequency**

Plenum 4.3-10 Male to 4.3-10 Male Low PIM Cable  
60 Inch Length Using SPP-250-LLPL Coax, LF Solder



**PE3W10901LF-60**

Part Number	Length	Description	F1	F2	F3	F4	Units	Weight (lbs)
			Frequency	500	1000	2500	6000	
PE3W10901LF	Custom Lengths Available	Insertion Loss (Typ.)	0.039	0.054	0.093	0.148	dB/ft	
			0.13	0.18	0.31	0.49	dB/m	
PE3W10901LF-12	12 In	Insertion Loss (Typ.)	0.44	0.46	0.5	0.55	dB	0.23
PE3W10901LF-24	24 In	Insertion Loss (Typ.)	0.48	0.51	0.59	0.7	dB	0.301
PE3W10901LF-36	36 In	Insertion Loss (Typ.)	0.52	0.57	0.68	0.85	dB	0.371
PE3W10901LF-60	60 In	Insertion Loss (Typ.)	0.6	0.67	0.87	1.14	dB	0.511
PE3W10901LF-50CM	50 CM	Insertion Loss (Typ.)	0.47	0.49	0.56	0.65	dB	0.275

The insertion loss data for the base model does not include loss due to the connectors. Each length includes insertion loss due to the connectors.

Loss due to Connector 1: 0.2 dB  
 Loss due to Connector 2: 0.2 dB  
 Base Weight: 0.23 pounds  
 Additional Weight per Inch: 0.00584 pounds

**Mechanical Specifications**

**Cable Assembly**

Length 60 in [152.4 cm]  
 Width/Diameter .5 in [12.7 mm]  
 Weight 0.511 lbs [231.79 g]

**Cable**

Cable Type SPP-250-LLPL  
 Impedance 50 Ohms  
 Inner Conductor Type Solid  
 Inner Conductor Material and Plating Copper  
 Dielectric Type PTFE  
 Number of Shields 1  
 Outer Conductor 1 Material and Plating Copper  
 Jacket Material FEP, Blue  
 Jacket Diameter 0.28 in [7.11 mm]  
 One Time Minimum Bend Radius 1.25 in [31.75 mm]  
 Bending Moment 0.8 lbs-ft [1.08 N-m]

Plenum 4.3-10 Male to 4.3-10 Male Low PIM Cable  
60 Inch Length Using SPP-250-LLPL Coax, LF Solder



**PE3W10901LF-60**

**Connectors**

Description	Connector 1	Connector 2
Type	4.3-10 Male	4.3-10 Male
Impedance	50 Ohms	50 Ohms
Configuration	Straight	Straight
Contact Material and Plating	Brass, Silver	Brass, Silver
Dielectric Type	PTFE	PTFE
Body Material and Plating	Brass, Tri-Metal	Brass, Tri-Metal
Coupling Nut Material and Plating	Brass, Tri-Metal	Brass, Tri-Metal

**Environmental Specifications**

Operating Range Temperature -40 to +155 deg C

**Compliance Certifications** (see [product page](#) for current document)

**Plotted and Other Data**

Notes:

Plenum 4.3-10 Male to 4.3-10 Male Low PIM Cable  
60 Inch Length Using SPP-250-LLPL Coax, LF Solder



## PE3W10901LF-60

### Typical Performance Data

### How to Order

Part Number Configuration:

**PE3W10901LF - xx uu**

Unit of Measure:  
cm = Centimeters  
<blank> = Inches

Length

Base Number

Example: PE3W10901LF-12 = 12 inches long cable  
PE3W10901LF-100cm = 100 cm long cable

Plenum 4.3-10 Male to 4.3-10 Male Low PIM Cable 60 Inch Length Using SPP-250-LLPL Coax, LF Solder from Pasternack Enterprises has same day shipment for domestic and International orders. Our RF, microwave and millimeter wave products maintain a 99.4% availability and are part of the broadest selection in the industry.

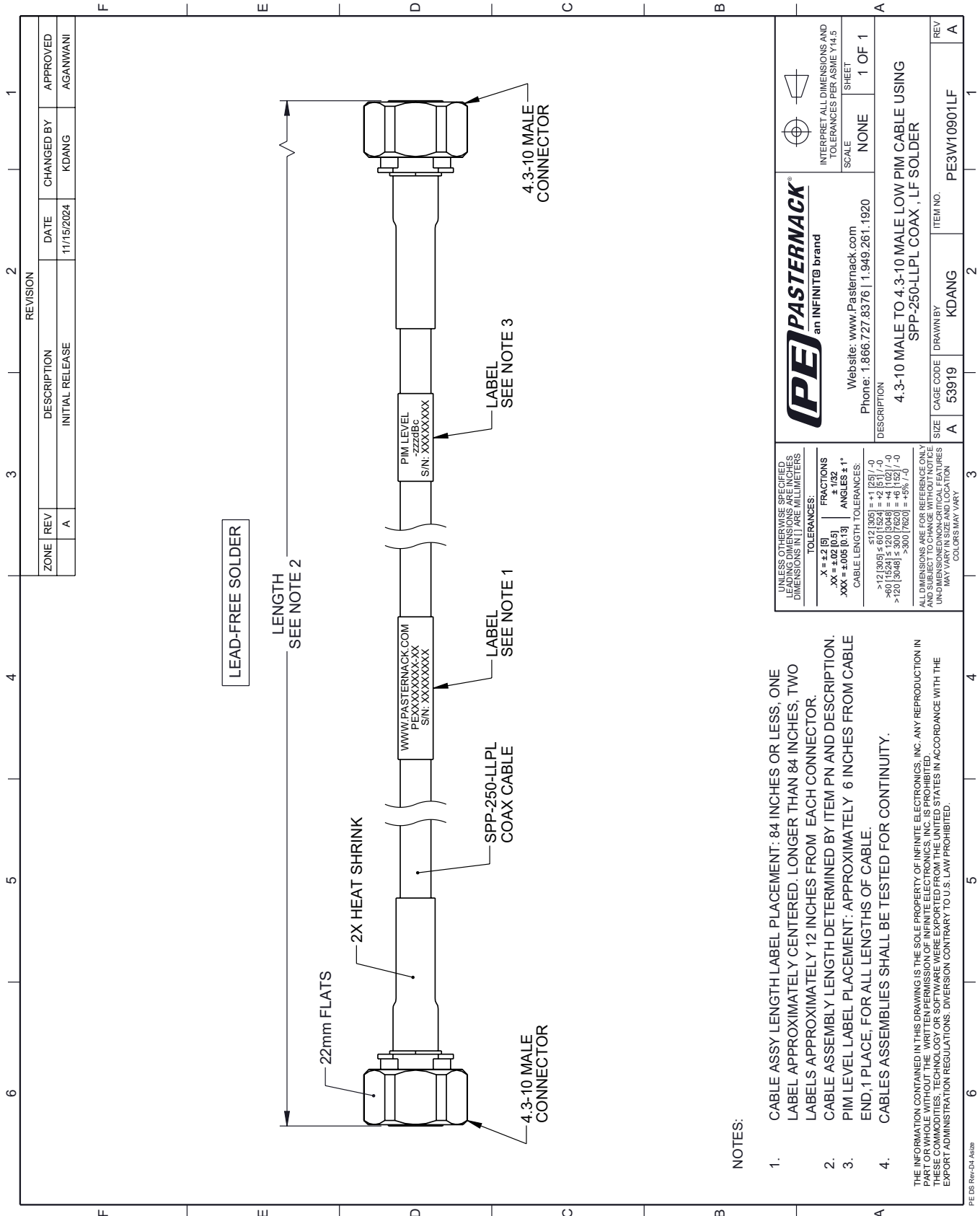
Click the following link (or enter part number in "SEARCH" on website) to obtain additional part information including price, inventory and certifications: [Plenum 4.3-10 Male to 4.3-10 Male Low PIM Cable 60 Inch Length Using SPP-250-LLPL Coax, LF Solder PE3W10901LF-60](https://www.pasternack.com/plenum-4.3-10-male-to-4.3-10-male-low-pim-cable-60-inch-length-using-spp-250-llpl-coax-lf-solder-pe3w10901lf-60)

URL: <https://www.pasternack.com/plenum-4.3-10-male-to-4.3-10-male-low-pim-cable-60-inch-length-using-spp-250-llpl-lf-solder-pe3w10901lf-60-p.aspx>

The information contained within this document is accurate to the best of our knowledge and representative of the part described herein. It may be necessary to make modifications to the part and/or the documentation of the part in order to impliment improvements. Pasternack Enterprises reserves the right to make such changes as required. Unless otherwise stated, all specifications are nominal. Pasternack Enterprises does not make any representation or warranty regarding the suitability of the part described herein for any particular purpose, and Pasternack Enterprises does not assume liability arising out of the use of any part or document.

# PE3W10901LF-60 CAD Drawing

Plenum 4.3-10 Male to 4.3-10 Male Low PIM Cable 60 Inch Length Using SPP-250-LLPL Coax, LF Solder



REVISION		DATE	CHANGED BY	APPROVED
ZONE	REV			
	A	11/15/2024	KDANG	AGANWANI
DESCRIPTION				
INITIAL RELEASE				

INTERPRET ALL DIMENSIONS AND TOLERANCES PER ASME Y14.5		
SCALE	NONE	SHEET 1 OF 1
Website: <a href="http://www.Pasternack.com">www.Pasternack.com</a> Phone: 1.866.727.8376   1.949.261.1920		
DESCRIPTION 4.3-10 MALE TO 4.3-10 MALE LOW PIM CABLE USING SPP-250-LLPL COAX, LF SOLDER		
SIZE	A	REV A
CAGE CODE	53919	ITEM NO. PE3W10901LF
DRAWN BY	KDANG	

UNLESS OTHERWISE SPECIFIED LEADING DIMENSIONS ARE IN INCHES DIMENSIONS IN [ ] ARE MILLIMETERS

**TOLERANCES:**  
 .X = ±.2 [5]  
 .XX = ±.02 [0.5]  
 .XXX = ±.005 [0.13]

**FRACTIONS**  
 ± 1/32  
 ANGLES ± 1°

CABLE LENGTH TOLERANCES:  
 ≤ 12 [305] ± .60 [1524] = +.1 [25] / -0  
 > 12 [305] ≤ 60 [1524] = +.4 [1027] / -0  
 > 60 [1524] ≤ 120 [3048] = +.4 [1027] / -0  
 > 120 [3048] ≤ 300 [7620] = +.5% / -0

ALL DIMENSIONS ARE FOR REFERENCE ONLY UNLESS OTHERWISE SPECIFIED. UNDIMENSIONED NON-CRITICAL FEATURES MAY VARY IN SIZE AND LOCATION. COLORS MAY VARY.

**NOTES:**

- CABLE ASSY LENGTH LABEL PLACEMENT: 84 INCHES OR LESS, ONE LABEL APPROXIMATELY CENTERED. LONGER THAN 84 INCHES, TWO LABELS APPROXIMATELY 12 INCHES FROM EACH CONNECTOR.
- CABLE ASSEMBLY LENGTH DETERMINED BY ITEM PN AND DESCRIPTION.
- PIM LEVEL LABEL PLACEMENT: APPROXIMATELY 6 INCHES FROM CABLE END, 1 PLACE, FOR ALL LENGTHS OF CABLE.
- CABLES ASSEMBLIES SHALL BE TESTED FOR CONTINUITY.

THE INFORMATION CONTAINED IN THIS DRAWING IS THE SOLE PROPERTY OF INFINITE ELECTRONICS, INC. ANY REPRODUCTION IN PART OR WHOLE WITHOUT THE WRITTEN PERMISSION OF INFINITE ELECTRONICS, INC. IS PROHIBITED. THESE COMMODITIES, TECHNOLOGY OR SOFTWARE WERE EXPORTED FROM THE UNITED STATES IN ACCORDANCE WITH THE EXPORT ADMINISTRATION REGULATIONS. DIVERSION CONTRARY TO U.S. LAW PROHIBITED.

PE DS Rev-D4-A320