

SMA Male to Limited Detent SMP Male 2 Hole Flange Cable Using PE-SR405FL Coax



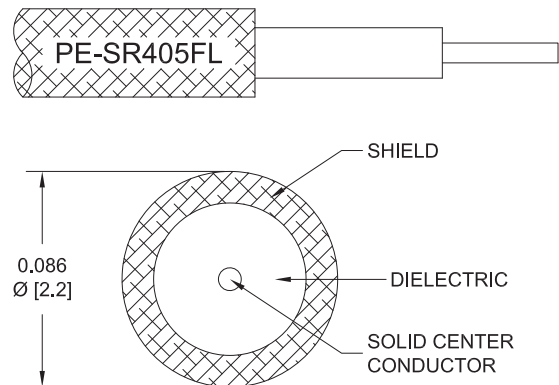
PE3W11874

Configuration

- Connector 1: SMA Male
- Connector 2: Limited Detent SMP Male 2 Hole Flange
- Cable Type: PE-SR405FL
- Coax Flex Type: Formable

Features

- Max Frequency 18 GHz
- 69.5% Phase Velocity



Applications

- General Purpose
- Laboratory Use

Description

Pasternack's PE3W11874 SMA male to SMP male limited detent 2 hole flange cable using PE-SR405FL coax is part of our full line of RF components available for same-day shipping. Pasternack's formable RF cable assemblies provide an alternative to costly pre-formed semi-rigid assemblies since they are hand formable. This Pasternack SMA to SMP cable assembly has a male to male gender configuration with 50 ohm formable PE-SR405FL coax. The PE3W11874 SMA male to SMP male cable assembly operates to 18 GHz. Our RF cable assembly with SMP 2 hole flange interface allows designers to create external connections on their product enclosures, and can be used in a variety of other rack mount and panel mount applications.

Custom versions of most RF cable assemblies can be built and shipped same day. Custom cable assembly lengths can be obtained by specifying the desired length on the web site at time of order or by contacting a sales representative. Other available RF cable assembly value added services include connector orientation or clocking, heat shrink booting and custom labeling. RF testing can also be performed to document the electrical performance of your cable assembly.

Electrical Specifications

Description	Minimum	Typical	Maximum	Units
Frequency Range	DC		18	GHz
VSWR			1.4:1	
Velocity of Propagation		69.5		%
Capacitance		29 [95.14]		pF/ft [pF/m]
DC Resistance Inner Conductor		65.7 [215.55]		Ohms/1000ft [Ohms/Km]
DC Resistance Outer Conductor		10.2 [33.46]		Ohms/1000ft [Ohms/Km]

Specifications by Frequency

SMA Male to Limited Detent SMP Male 2 Hole
Flange Cable Using PE-SR405FL Coax



PE3W11874

Part Number	Length	Description	F1	F2	F3	F4	F5	Units	Weight (lbs)
			Frequency		1000	2000	4500	9000	
PE3W11874	Custom Lengths Available	Insertion Loss (Typ.)	0.23	0.31	0.508	0.759	1.122	dB/ft	
			0.74	1.01	1.67	2.5	3.69	dB/m	
PE3W11874-6	6 inch	Insertion Loss (Typ.)	0.32	0.36	0.46	0.58	0.77	dB	0.062
PE3W11874-9	9 inch	Insertion Loss (Typ.)	0.37	0.43	0.59	0.77	1.05	dB	0.065
PE3W11874-12	12 inch	Insertion Loss (Typ.)	0.43	0.51	0.71	0.96	1.33	dB	0.067
PE3W11874-24	24 inch	Insertion Loss (Typ.)	0.65	0.81	1.22	1.72	2.45	dB	0.079
PE3W11874-36	36 inch	Insertion Loss (Typ.)	0.88	1.12	1.73	2.48	3.57	dB	0.09

The insertion loss data for the base model does not include loss due to the connectors. Each length includes insertion loss due to the connectors.

Loss due to Connector 1: 0.1 dB
 Loss due to Connector 2: 0.1 dB
 Base Weight: 0.067 pounds
 Additional Weight per Inch: 0.00092 pounds

Mechanical Specifications

Cable Assembly

Width/Diameter 0.5 in [12.7 mm]
 Weight 0.067 lbs [30.39 g]

Cable

Cable Type PE-SR405FL
 Impedance 50 Ohms
 Inner Conductor Type Solid
 Inner Conductor Material and Plating Copper Clad Steel, Silver
 Dielectric Type PTFE
 Number of Shields 1
 Outer Conductor 1 Material and Plating Copper, Tin
 Repeated Minimum Bend Radius 0.78 in [19.81 mm]

SMA Male to Limited Detent SMP Male 2 Hole Flange Cable Using PE-SR405FL Coax



PE3W11874

Connectors

Description	Connector 1	Connector 2
Type	SMA Male	SMP Male 2 Hole Flange
Specification		MIL-STD-348A
Impedance	50 Ohms	50 Ohms
Configuration	Straight	Straight
Connection Method		Limited Detent
Mating Cycles	500	
Contact Material and Plating	Beryllium Copper, Gold	Brass, Gold
Contact Plating Specification	ASTM-B488	
Dielectric Type	PTFE	PTFE
Outer Conductor Material and Plating		Brass, Gold
Body Material and Plating	Beryllium Copper, Gold	Brass, Gold
Body Plating Specification	ASTM-B488	
Coupling Nut Material and Plating	Steel	
Torque	7 in-lbs 0.79 Nm	
Seal Gasket Material	Silicone Rubber	

Environmental Specifications

Compliance Certifications (see [product page](#) for current document)

Plotted and Other Data

Notes:

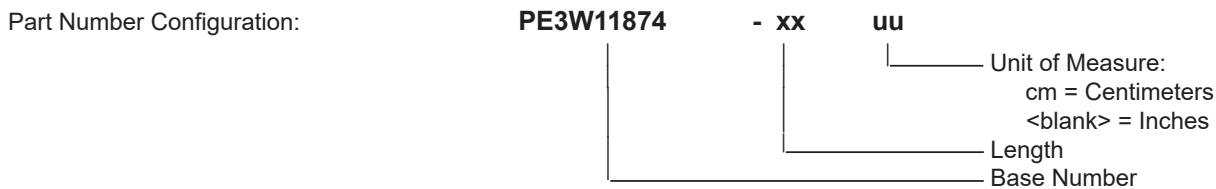
SMA Male to Limited Detent SMP Male 2 Hole Flange Cable Using PE-SR405FL Coax



PE3W11874

Typical Performance Data

How to Order



Example: PE3W11874-12 = 12 inches long cable
 PE3W11874-100cm = 100 cm long cable

SMA Male to Limited Detent SMP Male 2 Hole Flange Cable Using PE-SR405FL Coax from Pasternack Enterprises has same day shipment for domestic and International orders. Our RF, microwave and millimeter wave products maintain a 99.4% availability and are part of the broadest selection in the industry.

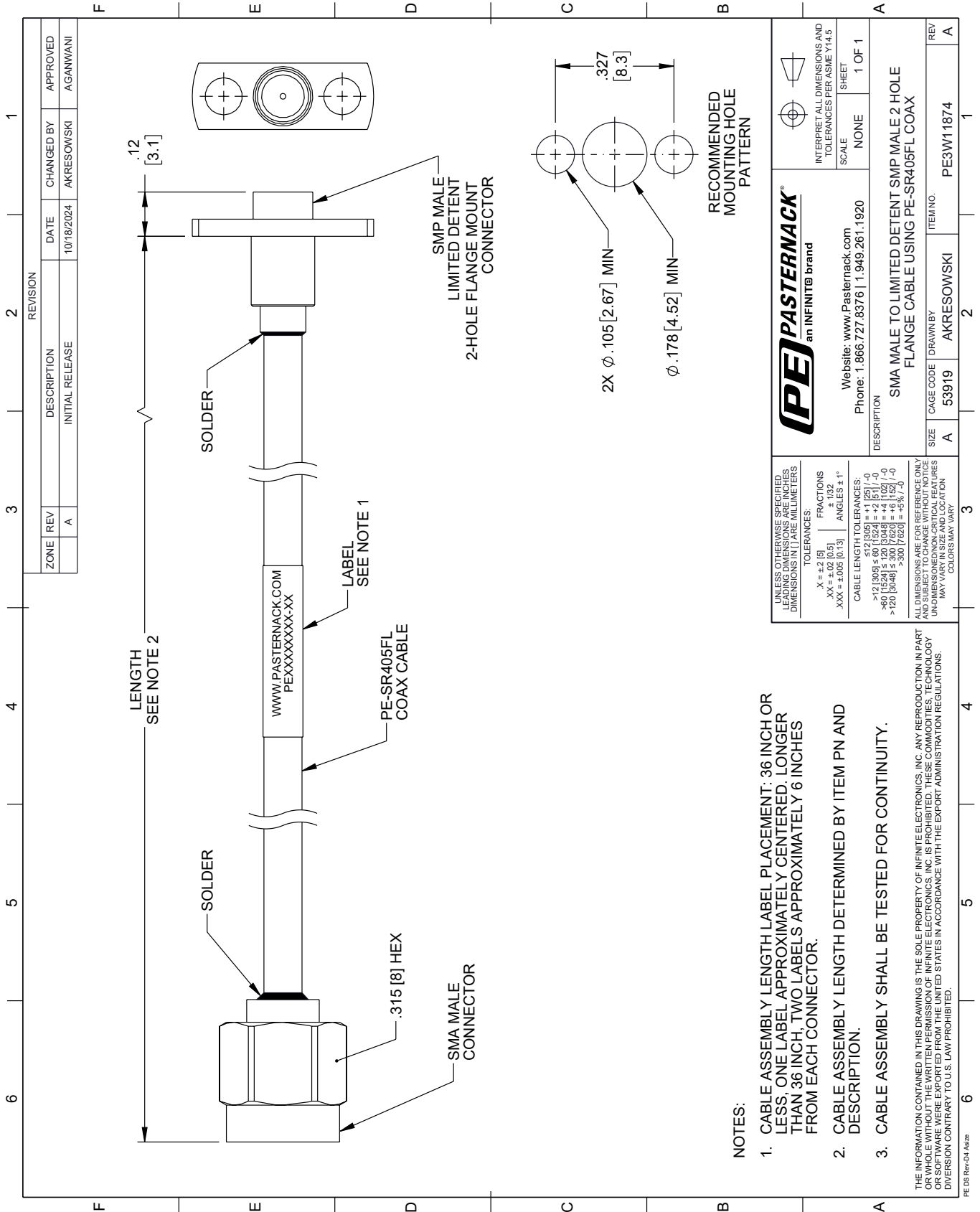
Click the following link (or enter part number in "SEARCH" on website) to obtain additional part information including price, inventory and certifications: [SMA Male to Limited Detent SMP Male 2 Hole Flange Cable Using PE-SR405FL Coax PE3W11874](#)

URL: <https://www.pasternack.com/sma-male-to-limited-detent-smp-male-2-hole-flange-cable-using-pe-sr405fl-pe3w11874-p.aspx>

The information contained within this document is accurate to the best of our knowledge and representative of the part described herein. It may be necessary to make modifications to the part and/or the documentation of the part in order to impliment improvements. Pasternack Enterprises reserves the right to make such changes as required. Unless otherwise stated, all specifications are nominal. Pasternack Enterprises does not make any representation or warranty regarding the suitability of the part described herein for any particular purpose, and Pasternack Enterprises does not assume liability arising out of the use of any part or document.

PE3W11874 CAD Drawing

SMA Male to Limited Detent SMP Male 2 Hole Flange Cable Using PE-SR405FL Coax



NOTES:

1. CABLE ASSEMBLY LENGTH LABEL PLACEMENT: 36 INCH OR LESS, ONE LABEL APPROXIMATELY CENTERED, LONGER THAN 36 INCH, TWO LABELS APPROXIMATELY 6 INCHES FROM EACH CONNECTOR.
2. CABLE ASSEMBLY LENGTH DETERMINED BY ITEM PN AND DESCRIPTION.
3. CABLE ASSEMBLY SHALL BE TESTED FOR CONTINUITY.

THE INFORMATION CONTAINED IN THIS DRAWING IS THE SOLE PROPERTY OF INFINITE ELECTRONICS, INC. ANY REPRODUCTION IN PART OR WHOLE WITHOUT THE WRITTEN PERMISSION OF INFINITE ELECTRONICS, INC. IS PROHIBITED. THESE COMMODITIES, TECHNOLOGY OR SOFTWARE ARE EXPORTED FROM THE UNITED STATES IN ACCORDANCE WITH THE EXPORT ADMINISTRATION REGULATIONS. DIVERSION CONTRARY TO U.S. LAW PROHIBITED.

<p>PE PASTERNAK an INFINITE brand</p>		<p>INTERPRET ALL DIMENSIONS AND TOLERANCES PER ASME Y14.5</p> <p>SCALE: NONE</p> <p>SHEET: 1 OF 1</p>	
<p>UNLESS OTHERWISE SPECIFIED, LEADING DIMENSIONS ARE IN INCHES. DIMENSIONS IN [] ARE MILLIMETERS.</p> <p>TOLERANCES:</p> <p>.X = ±.2 [5] FRACTIONS ± 1/32</p> <p>.XX = ±.02 [0.5] ANGLES ± 1°</p> <p>.XXX = ±.005 [0.13]</p>		<p>Website: www.Pasternack.com</p> <p>Phone: 1.866.727.8376 1.949.261.1920</p>	
<p>CABLE LENGTH TOLERANCES:</p> <p>>12 [305] ≤ 60 [1524] = ±.1 [25] / -0</p> <p>>60 [1524] ≤ 120 [3048] = ±.4 [102] / -0</p> <p>>120 [3048] ≤ 300 [7620] = ±.6 [15] / -0</p>		<p>DESCRIPTION: SMA MALE TO LIMITED DETENT SMP MALE 2 HOLE FLANGE CABLE USING PE-SR405FL COAX</p>	
<p>ALL DIMENSIONS ARE FOR REFERENCE ONLY. UNDIMENSIONED NON-CRITICAL FEATURES MAY VARY IN SIZE AND LOCATION. COLORS MAY VARY.</p>		<p>SIZE: A</p> <p>CAGE CODE: 53919</p> <p>DRAWN BY: AKRESOWSKI</p> <p>ITEM NO.: PE3W11874</p>	