



1.0/2.3 Plug Right Angle to 1.0/2.3 Plug Cable Using RG141 Coax , LF Solder

RF Cable Assemblies Technical Data Sheet

PE3W13017LF

Configuration

- Connector 1: 1.0/2.3 Plug Right Angle
- Connector 2: 1.0/2.3 Plug
- Cable Type: RG141

Features

- 70% Phase Velocity
- PTFE (FG) Jacket

Applications

- General Purpose
- Laboratory Use

Description

Pasternack's PE3W13017LF 1.0/2.3 plug right angle to 1.0/2.3 plug cable using RG141 coax is part of our full line of RF components available for same-day shipping. Pasternack's flexible RF cable assemblies are ideal for applications where tight bends and flexure are required. This Pasternack 1.0/2.3 to 1.0/2.3 cable assembly has a plug to plug gender configuration with 50 ohm flexible RG141 coax. The right angle 1.0/2.3 interface on the RG141 cable allows for easier connections in tight spaces.

Custom versions of most RF cable assemblies can be built and shipped same day. Custom cable assembly lengths can be obtained by specifying the desired length on the web site at time of order or by contacting a sales representative. Other available RF cable assembly value added services include connector orientation or clocking, heat shrink booting and custom labeling. RF testing can also be performed to document the electrical performance of your cable assembly.

Electrical Specifications

Description	Minimum	Typical	Maximum	Units
Velocity of Propagation		70		%
Capacitance		29.4 [96.46]		pF/ft [pF/m]
Jacket Spark			2,000	Vrms

Mechanical Specifications

Cable Assembly

Weight 0.069 lbs [31.3 g]

Cable

Cable Type RG141
 Impedance 50 Ohms
 Inner Conductor Type Solid
 Inner Conductor Material and Plating Copper Clad Steel, Silver

Click the following link (or enter part number in "SEARCH" on website) to obtain additional part information including price, inventory and certifications: [1.0/2.3 Plug Right Angle to 1.0/2.3 Plug Cable Using RG141 Coax , LF Solder PE3W13017LF](#)



1.0/2.3 Plug Right Angle to 1.0/2.3 Plug Cable
Using RG141 Coax , LF Solder

RF Cable Assemblies Technical Data Sheet

PE3W13017LF

Dielectric Type	PTFE
Number of Shields	1
Shield Layer 1	Silver Plated Copper
Jacket Material	PTFE (FG), Beige
Jacket Diameter	0.19 in [4.83 mm]

Connectors

Description	Connector 1	Connector 2
Type	1.0/2.3 Plug Right Angle	1.0/2.3 Plug
Impedance	50 Ohms	50 Ohms
Contact Material and Plating	Gold	Brass, Gold
Contact Plating Specification		30 µin minimum
Dielectric Type	PTFE	PTFE
Body Material and Plating	Brass, Nickel	Brass, Nickel
Body Plating Specification		100 µin minimum

Compliance Certifications (see [product page](#) for current document)

Plotted and Other Data

Notes:

Click the following link (or enter part number in "SEARCH" on website) to obtain additional part information including price, inventory and certifications: [1.0/2.3 Plug Right Angle to 1.0/2.3 Plug Cable Using RG141 Coax , LF Solder PE3W13017LF](#)



1.0/2.3 Plug Right Angle to 1.0/2.3 Plug Cable Using RG141 Coax , LF Solder

RF Cable Assemblies Technical Data Sheet

PE3W13017LF

How to Order

Part Number Configuration:

PE3W13017LF

- **xx**

uu

Unit of Measure:

cm = Centimeters

<blank> = Inches

Length

Base Number

Example: PE3W13017LF-12 = 12 inches long cable
PE3W13017LF-100cm = 100 cm long cable

1.0/2.3 Plug Right Angle to 1.0/2.3 Plug Cable Using RG141 Coax , LF Solder from Pasternack Enterprises has same day shipment for domestic and International orders. Our RF, microwave and millimeter wave products maintain a 99.4% availability and are part of the broadest selection in the industry.

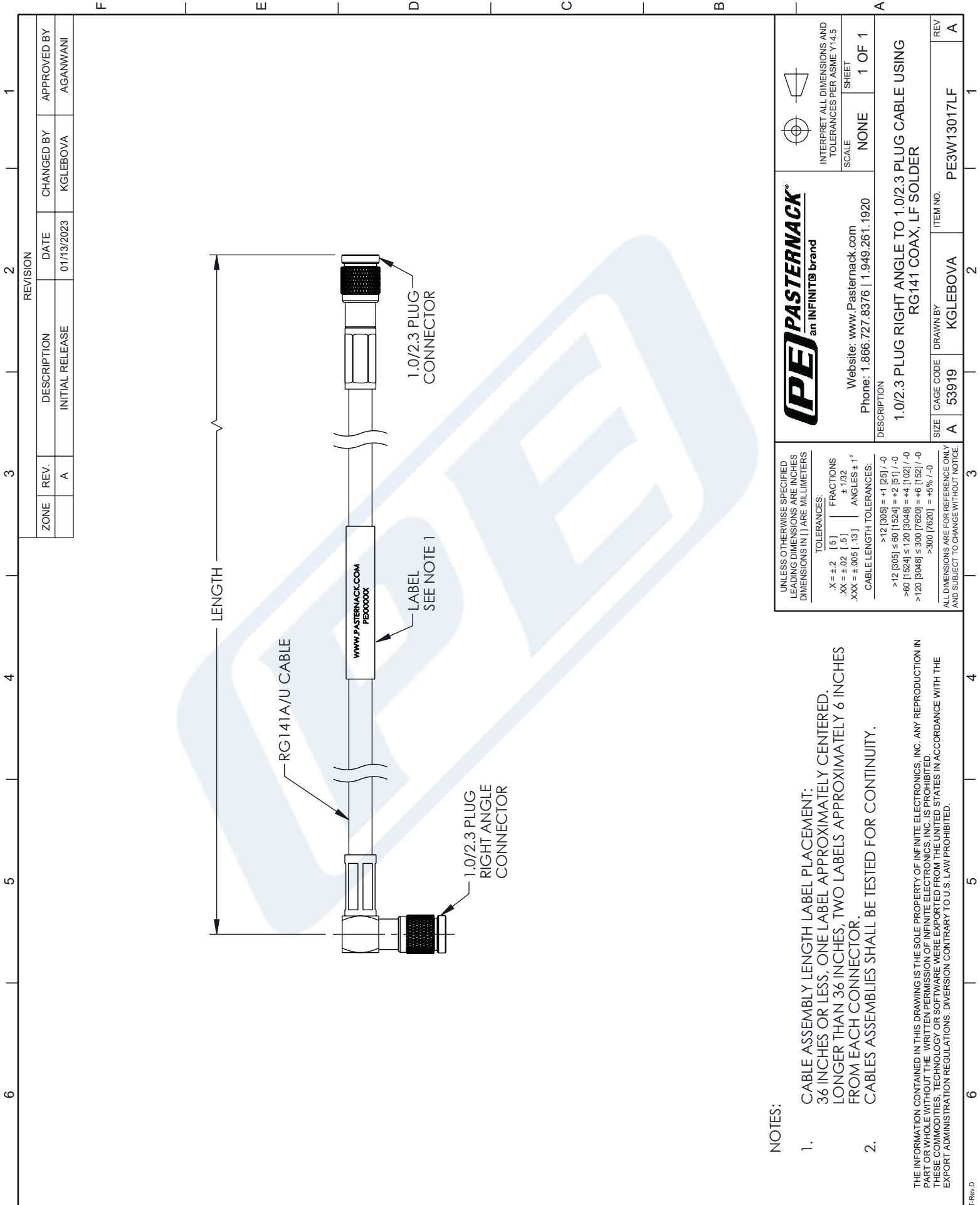
Click the following link (or enter part number in "SEARCH" on website) to obtain additional part information including price, inventory and certifications: [1.0/2.3 Plug Right Angle to 1.0/2.3 Plug Cable Using RG141 Coax , LF Solder PE3W13017LF](#)

URL: <https://www.pasternack.com/1.0-2.3-plug-right-angle-to-1.0-2.3-plug-cable-using-rg141-lf-solder-pe3w13017lf-p.aspx>

The information contained in this document is accurate to the best of our knowledge and representative of the part described herein. It may be necessary to make modifications to the part and/or the documentation of the part, in order to implement improvements. Pasternack reserves the right to make such changes as required. Unless otherwise stated, all specifications are nominal. Pasternack does not make any representation or warranty regarding the suitability of the part described herein for any particular purpose, and Pasternack does not assume any liability arising out of the use of any part or documentation.

PE3W13017LF CAD Drawing

1.0/2.3 Plug Right Angle to 1.0/2.3 Plug Cable Using RG141 Coax , LF Solder



REVISION		DATE	CHANGED BY	APPROVED BY		
ZONE	REV.	DESCRIPTION	INITIAL RELEASE	01/13/2023	KGLEBOVA	AGANWANI
	A					

PE PASTERNAK
an INFINITO brand

Website: www.Pasternack.com
Phone: 1.866.727.8376 | 1.949.261.1920

DESCRIPTION
1.0/2.3 PLUG RIGHT ANGLE TO 1.0/2.3 PLUG CABLE USING RG141 COAX, LF SOLDER

SCALE: NONE SHEET: 1 OF 1

INTERPRET ALL DIMENSIONS AND TOLERANCES PER ASME Y14.5

UNLESS OTHERWISE SPECIFIED LEADING DIMENSIONS ARE INCHES DIMENSIONS IN [] ARE MILLIMETERS

TOLERANCES:
 .X = ±.2 [.5] FRACTIONS ±.1/32
 .XX = ±.02 [.5] ANGLES ± 1°
 .XXX = ±.005 [.13]

CABLE LENGTH TOLERANCES:
 >12 [305] = +1 [25] / -0
 >60 [1524] = +2 [51] / -0
 >120 [3048] = +4 [102] / -0
 >300 [7620] = +6 [152] / -0
 >300 [7620] = +5% / -0

ALL DIMENSIONS ARE FOR REFERENCE ONLY AND SUBJECT TO CHANGE WITHOUT NOTICE.

- NOTES:
- CABLE ASSEMBLY LENGTH LABEL PLACEMENT: 36 INCHES OR LESS, ONE LABEL APPROXIMATELY CENTERED. LONGER THAN 36 INCHES, TWO LABELS APPROXIMATELY 6 INCHES FROM EACH CONNECTOR.
 - CABLES ASSEMBLIES SHALL BE TESTED FOR CONTINUITY.
- THE INFORMATION CONTAINED IN THIS DRAWING IS THE SOLE PROPERTY OF INFINITE ELECTRONICS, INC. ANY REPRODUCTION IN PART OR WHOLE WITHOUT THE WRITTEN PERMISSION OF INFINITE ELECTRONICS, INC. IS PROHIBITED. THESE COMMODITIES, TECHNOLOGY OR SOFTWARE WERE EXPORTED FROM THE UNITED STATES IN ACCORDANCE WITH THE EXPORT ADMINISTRATION REGULATIONS. DIVERSION CONTRARY TO U.S. LAW PROHIBITED.