

## N Male to SMA Male Right Angle Low Loss Cable Using LMR-195-UF Coax



### PE3W14328

#### Configuration

- Connector 1: N Male
- Connector 2: SMA Male Right Angle
- Cable Type: LMR-195-UF
- Coax Flex Type: Flexible

#### Features

- Max Frequency 6 GHz
- Shielding Effectivity > 90 dB
- 74% Phase Velocity
- Double Shielded
- TPE Jacket

#### Applications

- General Purpose
- Laboratory Use

#### Description

Pasternack's PE3W14328 type N male to SMA male right angle cable using LMR-195-UF coax is part of our full line of RF components available for same-day shipping. Pasternack's flexible RF cable assemblies are ideal for applications where tight bends and flexure are required. This Pasternack type N to SMA cable assembly has a male to male gender configuration with 50 ohm flexible LMR-195-UF coax. The PE3W14328 type N male to SMA male cable assembly operates to 6 GHz. The right angle SMA interface on the LMR-195-UF cable allows for easier connections in tight spaces. The double shielding of this Pasternack cable assembly provides excellent shielding effectiveness of better than 90 dB.

Custom versions of most RF cable assemblies can be built and shipped same day. Custom cable assembly lengths can be obtained by specifying the desired length on the web site at time of order or by contacting a sales representative. Other available RF cable assembly value added services include connector orientation or clocking, heat shrink booting and custom labeling. RF testing can also be performed to document the electrical performance of your cable assembly.

#### Electrical Specifications

Description	Minimum	Typical	Maximum	Units
Frequency Range	DC		6	GHz
VSWR			1.4:1	
Velocity of Propagation		74		%
RF Shielding	90			dB
Group Delay		1.27 [4.17]		ns/ft [ns/m]
Capacitance		25.4 [83.33]		pF/ft [pF/m]
Inductance		0.064 [0.21]		uH/ft [uH/m]
DC Resistance Inner Conductor		9.5 [31.17]		Ohms/1000ft [Ohms/Km]
DC Resistance Outer Conductor		4.9 [16.08]		Ohms/1000ft [Ohms/Km]

## N Male to SMA Male Right Angle Low Loss Cable Using LMR-195-UF Coax



### PE3W14328

#### Electrical Specifications

Description	Minimum	Typical	Maximum	Units
Jacket Spark			3,000	Vrms

#### Specifications by Frequency

Part Number	Length	Description	F1	F2	F3	F4	F5	Units	Weight (lbs)
			Frequency					MHz	
PE3W14328	Custom Lengths Available	Insertion Loss (Typ.)	0.067	0.097	0.138	0.226	0.356	dB/ft	
			0.22	0.32	0.46	0.75	1.17	dB/m	
PE3W14328-12	12 In	Insertion Loss (Typ.)	0.37	0.4	0.44	0.53	0.66	dB	0.106
PE3W14328-24	24 In	Insertion Loss (Typ.)	0.44	0.5	0.58	0.76	1.02	dB	0.127
PE3W14328-36	36 In	Insertion Loss (Typ.)	0.51	0.6	0.72	0.98	1.37	dB	0.148
PE3W14328-48	48 In	Insertion Loss (Typ.)	0.57	0.69	0.86	1.21	1.73	dB	0.169
PE3W14328-60	60 In	Insertion Loss (Typ.)	0.64	0.79	0.99	1.43	2.08	dB	0.19

The insertion loss data for the base model does not include loss due to the connectors. Each length includes insertion loss due to the connectors.

Loss due to Connector 1:	0.1 dB
Loss due to Connector 2:	0.2 dB
Base Weight:	0.106 pounds
Additional Weight per Inch:	0.00175 pounds

#### Mechanical Specifications

##### Cable Assembly

Width/Diameter	0.5 in [12.7 mm]
Weight	0.106 lbs [48.08 g]

##### Cable

Cable Type	LMR-195-UF
Impedance	50 Ohms
Inner Conductor Type	Stranded
Inner Conductor Material and Plating	Copper
Dielectric Type	Foam PE
Number of Shields	2
Shield Layer 1	Aluminum Tape
Shield Layer 2	Tinned Copper
Jacket Material	TPE, Black
Jacket Diameter	0.195 in [4.95 mm]
One Time Minimum Bend Radius	0.5 in [12.7 mm]
Repeated Minimum Bend Radius	2 in [50.8 mm]
Bending Moment	0.1 lbs-ft [0.14 N-m]
Flat Plate Crush	10 lbs/in [0.18 Kg/mm]
Tensile Strength	40 lbs [18.14 Kg]

N Male to SMA Male Right Angle Low Loss  
Cable Using LMR-195-UF Coax



**PE3W14328**

**Connectors**

Description	Connector 1	Connector 2
Type	N Male	SMA Male Right Angle
Specification	MIL-STD-348	MIL-STD-348A
Impedance	50 Ohms	50 Ohms
Configuration	Straight	Right Angle
Contact Material and Plating	Brass, Silver	Brass, Gold
Contact Plating Specification		50 µin minimum
Dielectric Type	PTFE	PTFE
Body Material and Plating	Brass, Nickel	Brass, Nickel
Body Plating Specification		100 µin minimum
Coupling Nut Material and Plating	Brass, Nickel	Brass, Nickel
Coupling Nut Plating Specification		100 µin minimum
Hex Size		5/16 inch
Torque		3 in-lbs 0.34 Nm

**Environmental Specifications**

Operating Range Temperature -40 to +85 deg C

**Compliance Certifications** (see [product page](#) for current document)

**Plotted and Other Data**

Notes:

## N Male to SMA Male Right Angle Low Loss Cable Using LMR-195-UF Coax



### PE3W14328

#### Typical Performance Data

#### How to Order

Part Number Configuration:

**PE3W14328**

- **xx**

**uu**

Unit of Measure:

cm = Centimeters

<blank> = Inches

Length

Base Number

Example: PE3W14328-12 = 12 inches long cable  
PE3W14328-100cm = 100 cm long cable

N Male to SMA Male Right Angle Low Loss Cable Using LMR-195-UF Coax from Pasternack Enterprises has same day shipment for domestic and International orders. Our RF, microwave and millimeter wave products maintain a 99.4% availability and are part of the broadest selection in the industry.

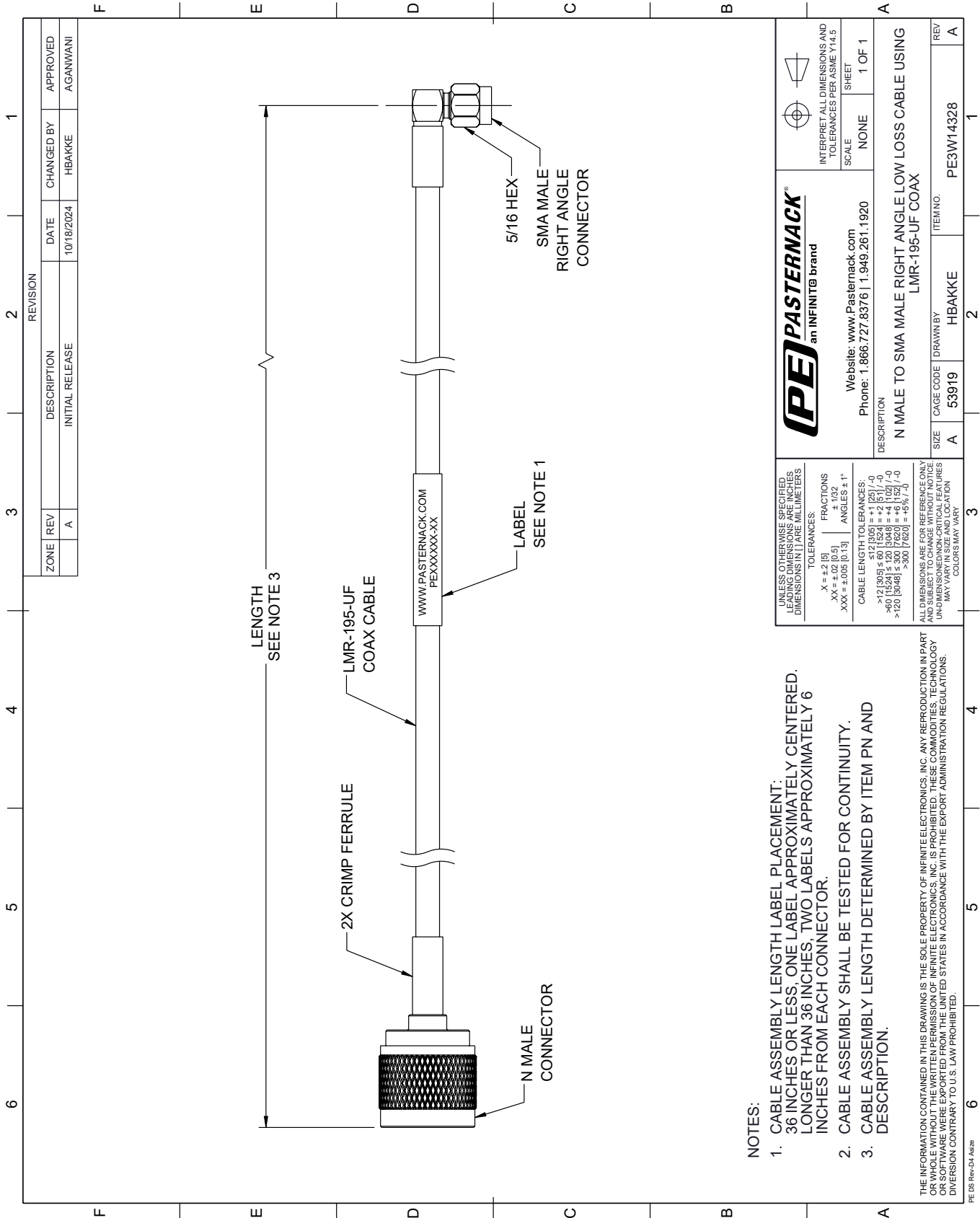
Click the following link (or enter part number in "SEARCH" on website) to obtain additional part information including price, inventory and certifications: [N Male to SMA Male Right Angle Low Loss Cable Using LMR-195-UF Coax PE3W14328](#)

URL: <https://www.pasternack.com/n-male-to-sma-male-low-loss-cable-using-lmr-195-uf-pe3w14328-p.aspx>

The information contained within this document is accurate to the best of our knowledge and representative of the part described herein. It may be necessary to make modifications to the part and/or the documentation of the part in order to implement improvements. Pasternack Enterprises reserves the right to make such changes as required. Unless otherwise stated, all specifications are nominal. Pasternack Enterprises does not make any representation or warranty regarding the suitability of the part described herein for any particular purpose, and Pasternack Enterprises does not assume liability arising out of the use of any part or document.

# PE3W14328 CAD Drawing

N Male to SMA Male Right Angle Low Loss Cable Using LMR-195-UF Coax



## NOTES:

- CABLE ASSEMBLY LENGTH LABEL PLACEMENT: 36 INCHES OR LESS, ONE LABEL APPROXIMATELY CENTERED. LONGER THAN 36 INCHES, TWO LABELS APPROXIMATELY 6 INCHES FROM EACH CONNECTOR.
- CABLE ASSEMBLY SHALL BE TESTED FOR CONTINUITY.
- CABLE ASSEMBLY LENGTH DETERMINED BY ITEM PN AND DESCRIPTION.

THE INFORMATION CONTAINED IN THIS DRAWING IS THE SOLE PROPERTY OF INFINITE ELECTRONICS, INC. ANY REPRODUCTION IN PART OR WHOLE WITHOUT THE WRITTEN PERMISSION OF INFINITE ELECTRONICS, INC. IS PROHIBITED. THESE COMMODITIES, TECHNOLOGY OR SERVICES ARE HEREBY EXPORTED FROM THE UNITED STATES IN ACCORDANCE WITH THE EXPORT ADMINISTRATION REGULATIONS. DIVERSION CONTRARY TO U.S. LAW PROHIBITED.