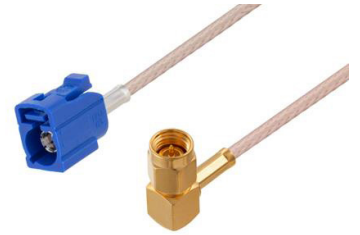


## SMA Male Right Angle to Blue FAKRA Jack Cable Using RG316 Coax



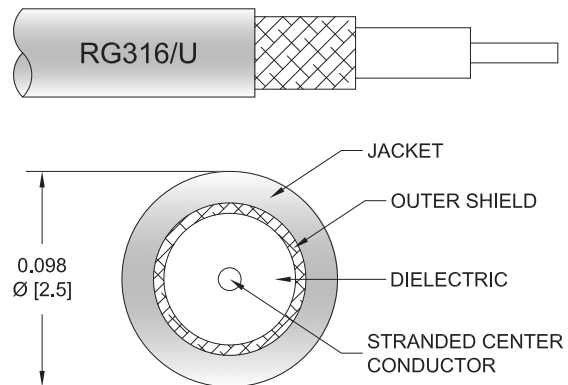
### PE3W14872

#### Configuration

- Connector 1: SMA Male Right Angle
- Connector 2: FAKRA Jack
- Cable Type: RG316
- Coax Flex Type: Flexible

#### Features

- Max Frequency 3 GHz
- 69% Phase Velocity
- FEP Jacket



#### Applications

- General Purpose
- Laboratory Use

#### Description

Pasternack's PE3W14872 SMA male right angle to blue FAKRA jack cable using RG316 coax is part of our full line of RF components available for same-day shipping. Pasternack's flexible RF cable assemblies are ideal for applications where tight bends and flexure are required. This Pasternack SMA to FAKRA cable assembly has a male to jack gender configuration with 50 ohm flexible RG316 coax. The PE3W14872 SMA male to FAKRA jack cable assembly operates to 3 GHz. The right angle SMA interface on the RG316 cable allows for easier connections in tight spaces.

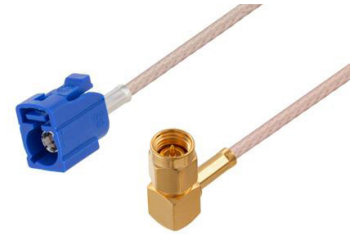
Custom versions of most RF cable assemblies can be built and shipped same day. Custom cable assembly lengths can be obtained by specifying the desired length on the web site at time of order or by contacting a sales representative. Other available RF cable assembly value added services include connector orientation or clocking, heat shrink booting and custom labeling. RF testing can also be performed to document the electrical performance of your cable assembly.

#### Electrical Specifications

Description	Minimum	Typical	Maximum	Units
Frequency Range	DC		3	GHz
VSWR			1.4:1	
Velocity of Propagation		69		%
Jacket Spark			2,000	Vrms

#### Specifications by Frequency

SMA Male Right Angle to Blue FAKRA  
Jack Cable Using RG316 Coax



**PE3W14872**

Part Number	Length	Description	F1	F2	F3	F4	F5	Units	Weight (lbs)
			Frequency		100	250	500	1000	
PE3W14872	Custom Lengths Available	Insertion Loss (Typ.)	0.11	0.16	0.24	0.38	0.58	dB/ft	
			0.37	0.53	0.79	1.25	1.91	dB/m	
PE3W14872-12	12 inch	Insertion Loss (Typ.)	0.41	0.46	0.54	0.68	0.88	dB	0.031
PE3W14872-24	24 inch	Insertion Loss (Typ.)	0.52	0.62	0.78	1.06	1.46	dB	0.042
PE3W14872-36	36 inch	Insertion Loss (Typ.)	0.63	0.78	1.02	1.44	2.04	dB	0.052
PE3W14872-48	48 inch	Insertion Loss (Typ.)	0.74	0.94	1.26	1.82	2.62	dB	0.062
PE3W14872-72	72 inch	Insertion Loss (Typ.)	0.96	1.26	1.73	2.58	3.78	dB	0.082

The insertion loss data for the base model does not include loss due to the connectors. Each length includes insertion loss due to the connectors.

Loss due to Connector 1: 0.2 dB  
 Loss due to Connector 2: 0.1 dB  
 Base Weight: 0.031 pounds  
 Additional Weight per Inch: 0.00084 pounds

**Mechanical Specifications**

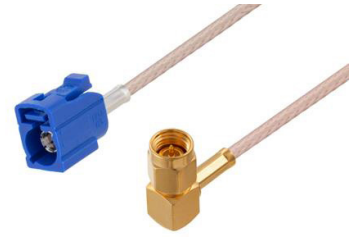
**Cable Assembly**

Width/Diameter 0.5 in [12.7 mm]  
 Weight 0.031 lbs [14.06 g]

**Cable**

Cable Type RG316  
 Impedance 50 Ohms  
 Inner Conductor Type Stranded  
 Inner Conductor Material and Plating Copper Clad Steel, Silver  
 Dielectric Type PTFE  
 Number of Shields 1  
 Shield Layer 1 Silver Plated Copper Braid  
 Jacket Material FEP, Tan  
 Jacket Diameter 0.102 in [2.59 mm]

## SMA Male Right Angle to Blue FAKRA Jack Cable Using RG316 Coax



### PE3W14872

#### Connectors

Description	Connector 1	Connector 2
Type	SMA Male Right Angle	FAKRA Jack
Impedance	50 Ohms	50 Ohms
Configuration	Right Angle	Straight
Color		BL
Contact Material and Plating	Brass, Gold	Phosphor Bronze, Gold
Dielectric Type	Teflon	PTFE
Outer Conductor Material and Plating		Brass, Nickel
Body Material and Plating	Brass, Gold	Plastic
Coupling Nut Material and Plating	Brass, Gold	
Hex Size	5/16 in	
Torque	5 in-lbs 0.57 Nm	

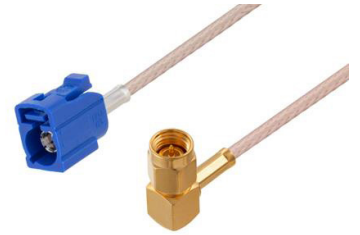
#### Environmental Specifications

**Compliance Certifications** (see [product page](#) for current document)

#### Plotted and Other Data

Notes:

## SMA Male Right Angle to Blue FAKRA Jack Cable Using RG316 Coax



### PE3W14872

#### Typical Performance Data

#### How to Order

Part Number Configuration:

**PE3W14872**

- **xx**

**uu**

Unit of Measure:

cm = Centimeters

<blank> = Inches

Length

Base Number

Example: PE3W14872-12 = 12 inches long cable  
PE3W14872-100cm = 100 cm long cable

SMA Male Right Angle to Blue FAKRA Jack Cable Using RG316 Coax from Pasternack Enterprises has same day shipment for domestic and International orders. Our RF, microwave and millimeter wave products maintain a 99.4% availability and are part of the broadest selection in the industry.

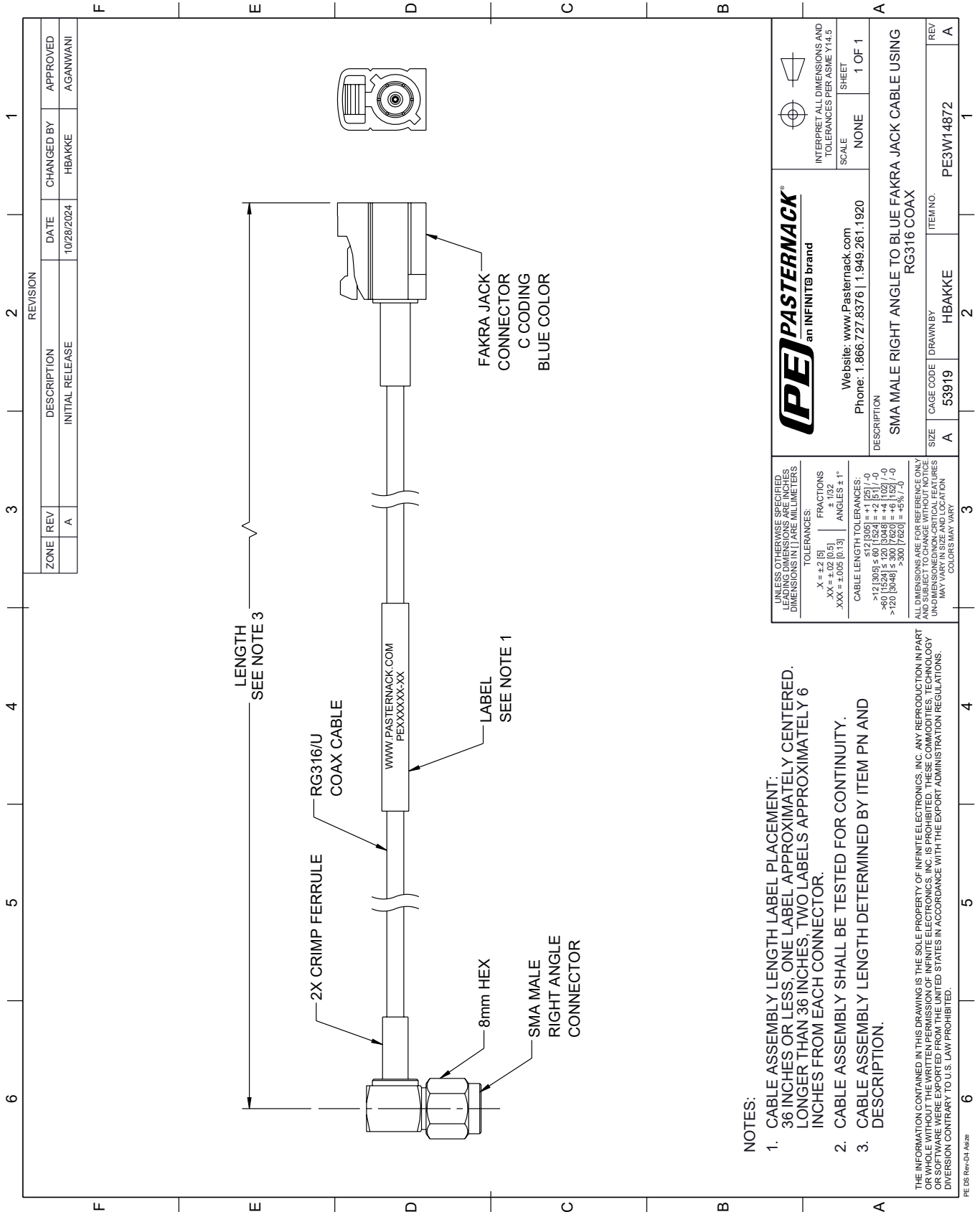
Click the following link (or enter part number in "SEARCH" on website) to obtain additional part information including price, inventory and certifications: [SMA Male Right Angle to Blue FAKRA Jack Cable Using RG316 Coax PE3W14872](https://www.pasternack.com/sma-male-right-angle-to-fakra-jack-cable-using-rg316-pe3w14872-p.aspx)

URL: <https://www.pasternack.com/sma-male-right-angle-to-fakra-jack-cable-using-rg316-pe3w14872-p.aspx>

The information contained within this document is accurate to the best of our knowledge and representative of the part described herein. It may be necessary to make modifications to the part and/or the documentation of the part in order to implement improvements. Pasternack Enterprises reserves the right to make such changes as required. Unless otherwise stated, all specifications are nominal. Pasternack Enterprises does not make any representation or warranty regarding the suitability of the part described herein for any particular purpose, and Pasternack Enterprises does not assume liability arising out of the use of any part or document.

# PE3W14872 CAD Drawing

SMA Male Right Angle to Blue FAKRA Jack Cable Using RG316 Coax



**NOTES:**

1. CABLE ASSEMBLY LENGTH LABEL PLACEMENT: 36 INCHES OR LESS, ONE LABEL APPROXIMATELY CENTERED. LONGER THAN 36 INCHES, TWO LABELS APPROXIMATELY 6 INCHES FROM EACH CONNECTOR.
2. CABLE ASSEMBLY SHALL BE TESTED FOR CONTINUITY.
3. CABLE ASSEMBLY LENGTH DETERMINED BY ITEM PN AND DESCRIPTION.

THE INFORMATION CONTAINED IN THIS DRAWING IS THE SOLE PROPERTY OF INFINITE ELECTRONICS, INC. ANY REPRODUCTION IN PART OR WHOLE WITHOUT THE WRITTEN PERMISSION OF INFINITE ELECTRONICS, INC. IS PROHIBITED. THESE COMMODITIES, TECHNOLOGY OR SERVICES ARE EXPORTED FROM THE UNITED STATES IN ACCORDANCE WITH THE EXPORT ADMINISTRATION REGULATIONS. DIVERSION CONTRARY TO U.S. LAW PROHIBITED.

PE DS Rev-04 Add2

REVISION		DATE	CHANGED BY	APPROVED
ZONE	REV			
	A	10/28/2024	HBAKKE	AGANWANI
DESCRIPTION				
INITIAL RELEASE				

<p>Website: <a href="http://www.Pasternack.com">www.Pasternack.com</a> Phone: 1.866.727.8376   1.949.261.1920</p>		<p>INTERPRET ALL DIMENSIONS AND TOLERANCES PER ASME Y14.5</p>	
		SCALE	SHEET
<p>UNLESS OTHERWISE SPECIFIED, LEADING DIMENSIONS ARE IN INCHES AND UNLEADING DIMENSIONS ARE IN MILLIMETERS</p> <p>TOLERANCES:          .X = +.2 [-5] ±.132          .XX = ±.02 [0.5] ±.132          .XXX = ±.005 [0.13] ±.132</p> <p>ANGLES ± 1°</p> <p>CABLE LENGTH TOLERANCES:          &lt;12 [305] ≤ 60 [1524] = +.1 [25] / -0          &gt;60 [1524] ≤ 120 [3048] = +.4 [102] / -0          &gt;120 [3048] ≤ 300 [7620] = +.6 [152] / -0</p>		<p>ALL DIMENSIONS ARE FOR REFERENCE ONLY. UNDIMENSIONED NON-CRITICAL FEATURES MAY VARY IN SIZE AND LOCATION. COLORS MAY VARY.</p>	
<p>DESCRIPTION</p> <p>SMA MALE RIGHT ANGLE TO BLUE FAKRA JACK CABLE USING RG316 COAX</p>		SIZE	ITEM NO.
A	53919	HBAKKE	PE3W14872
DRAWN BY		REV	
A		A	