

Plenum 7/16 DIN Male to 7/16 DIN Male Low PIM Cable 60 Inch Length Using SPP-500-LLPL Coax

PE3W15978-60

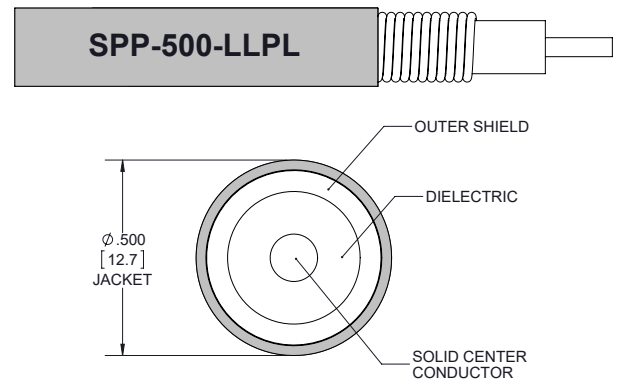


Configuration

- Connector 1: 7/16 DIN Male
- Connector 2: 7/16 DIN Male
- Cable Type: SPP-500-LLPL
- Coax Flex Type: Corrugated

Features

- Max Frequency 3 GHz
- Low PIM: -160 dBc Max
- 76% Phase Velocity
- FEP Jacket



Applications

- General Purpose
- Laboratory Use
- Low PIM Applications

Description

Pasternack's PE3W15978-60 7/16 DIN male to 7/16 DIN male 60 inch cable using SPP-500-LLPL coax is part of our full line of RF components available for same-day shipping. Pasternack's corrugated RF cable assemblies are ideal for applications where durability and high power are needed. This Pasternack 7/16 DIN to 7/16 DIN cable assembly has a male to male gender configuration with 50 ohm corrugated SPP-500-LLPL coax. The PE3W15978-60 7/16 DIN male to 7/16 DIN male cable assembly operates to 3 GHz. Our low PIM design also offers excellent passive intermodulation performance with PIM levels better than -160 dBc.

Custom versions of most RF cable assemblies can be built and shipped same day. Custom cable assembly lengths can be obtained by specifying the desired length on the web site at time of order or by contacting a sales representative. Other available RF cable assembly value added services include connector orientation or clocking, heat shrink booting and custom labeling. RF testing can also be performed to document the electrical performance of your cable assembly.

Electrical Specifications

Description	Minimum	Typical	Maximum	Units
Frequency Range	DC		3	GHz
VSWR			1.5:1	
Velocity of Propagation		76		%
Passive Intermodulation			-160	dBc
IM3 (2x43dBm Tones) at 850 MHz or 1900 MHz				
Capacitance		26.2 [85.96]		pF/ft [pF/m]

Specifications by Frequency

Plenum 7/16 DIN Male to 7/16 DIN Male Low PIM
Cable 60 Inch Length Using SPP-500-LLPL Coax



PE3W15978-60

Part Number	Length	Description	F1	F2	F3	Units	Weight (lbs)
		Frequency	500	1000	3000	MHz	
PE3W15978	Custom Lengths Available	Insertion Loss (Typ.)	0.023	0.034	0.065	dB/ft	
			0.08	0.12	0.22	dB/m	
PE3W15978-24	24 In	Insertion Loss (Typ.)	0.25	0.27	0.33	dB	0.912
PE3W15978-48	48 In	Insertion Loss (Typ.)	0.3	0.34	0.46	dB	1.224
PE3W15978-60	60 In	Insertion Loss (Typ.)	0.32	0.37	0.53	dB	1.38
PE3W15978-150CM	150 CM	Insertion Loss (Typ.)	0.32	0.37	0.52	dB	1.368
PE3W15978-200CM	200 CM	Insertion Loss (Typ.)	0.36	0.43	0.63	dB	1.624

The insertion loss data for the base model does not include loss due to the connectors. Each length includes insertion loss due to the connectors.

Loss due to Connector 1:	0.1 dB
Loss due to Connector 2:	0.1 dB
Base Weight:	0.756 pounds
Additional Weight per Inch:	0.013 pounds

Mechanical Specifications

Cable Assembly

Length	60 in [152.4 cm]
Width/Diameter	.5 in [12.7 mm]
Weight	1.38 lbs [625.96 g]

Cable

Cable Type	SPP-500-LLPL
Impedance	50 Ohms
Inner Conductor Type	Solid
Inner Conductor Material and Plating	Copper Clad Aluminum
Dielectric Type	PTFE
Number of Shields	1
Outer Conductor 1 Material and Plating	Copper
Jacket Material	FEP, Blue
Jacket Diameter	0.5 in [12.7 mm]
One Time Minimum Bend Radius	1.5 in [38.1 mm]

Plenum 7/16 DIN Male to 7/16 DIN Male Low PIM
Cable 60 Inch Length Using SPP-500-LLPL Coax



PE3W15978-60

Connectors

Description	Connector 1	Connector 2
Type	7/16 DIN Male	7/16 DIN Male
Specification	IEC 61169-4	IEC 61169-4
Impedance	50 Ohms	50 Ohms
Configuration	Straight	Straight
Contact Material and Plating	Spring Copper, Silver	Spring Copper, Silver
Contact Plating Specification	5 µm minimum	5 µm minimum
Dielectric Type	TPX	TPX
Outer Conductor Material and Plating	Brass, Nickel	Brass, Nickel
Outer Conductor Plating Specification	5 µm minimum	5 µm minimum
Body Material and Plating	Brass, Tri-Metal	Brass, Tri-Metal
Body Plating Specification	2 µm minimum	2 µm minimum
Coupling Nut Material and Plating	Brass, Nickel	Brass, Nickel
Coupling Nut Plating Specification	5 µm minimum	5 µm minimum
Hex Size	32 mm	32 mm
Torque	18.417 ft-lbs 24.97 Nm	18.417 ft-lbs 24.97 Nm

Environmental Specifications

Operating Range Temperature -40 to +85 deg C

Compliance Certifications (see [product page](#) for current document)

Plotted and Other Data

Notes:

Plenum 7/16 DIN Male to 7/16 DIN Male Low PIM
Cable 60 Inch Length Using SPP-500-LLPL Coax



PE3W15978-60

Typical Performance Data

How to Order

Part Number Configuration:

PE3W15978

- xx

uu

Unit of Measure:
cm = Centimeters
<blank> = Inches
Length
Base Number

Example: PE3W15978-12 = 12 inches long cable
PE3W15978-100cm = 100 cm long cable

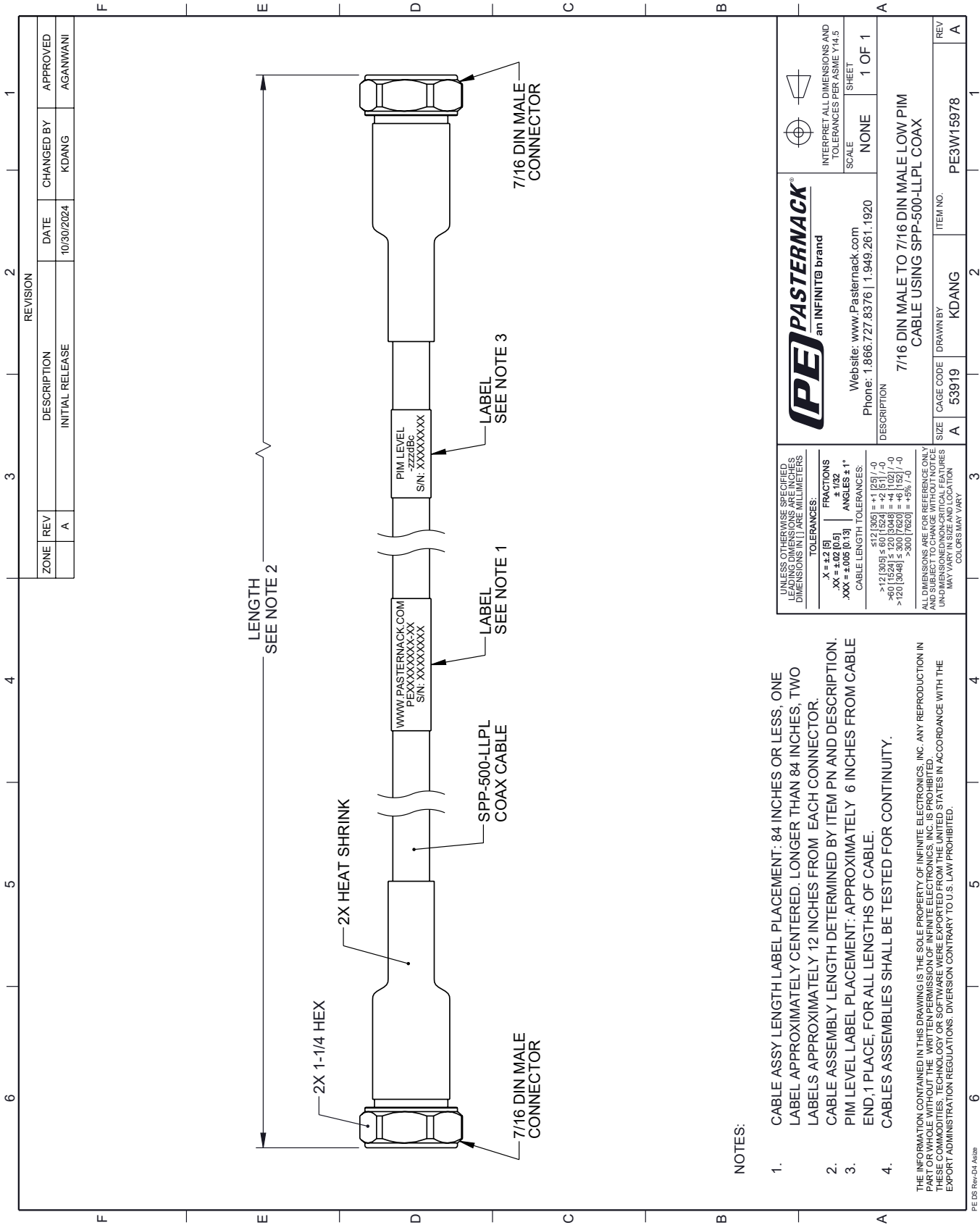
Plenum 7/16 DIN Male to 7/16 DIN Male Low PIM Cable 60 Inch Length Using SPP-500-LLPL Coax from Pasternack Enterprises has same day shipment for domestic and International orders. Our RF, microwave and millimeter wave products maintain a 99.4% availability and are part of the broadest selection in the industry.

Click the following link (or enter part number in "SEARCH" on website) to obtain additional part information including price, inventory and certifications: [Plenum 7/16 DIN Male to 7/16 DIN Male Low PIM Cable 60 Inch Length Using SPP-500-LLPL Coax PE3W15978-60](https://www.pasternack.com/plenum-7-16-din-male-to-7-16-din-male-low-pim-cable-60-inch-length-using-spp-500-llpl-pe3w15978-60-p.aspx)

URL: <https://www.pasternack.com/plenum-7-16-din-male-to-7-16-din-male-low-pim-cable-60-inch-length-using-spp-500-llpl-pe3w15978-60-p.aspx>

The information contained within this document is accurate to the best of our knowledge and representative of the part described herein. It may be necessary to make modifications to the part and/or the documentation of the part in order to implement improvements. Pasternack Enterprises reserves the right to make such changes as required. Unless otherwise stated, all specifications are nominal. Pasternack Enterprises does not make any representation or warranty regarding the suitability of the part described herein for any particular purpose, and Pasternack Enterprises does not assume liability arising out of the use of any part or document.

PE3W15978-60 CAD Drawing
Plenum 7/16 DIN Male to 7/16 DIN Male Low PIM Cable 60 Inch Length Using SPP-500-LLPL Coax



NOTES:

- 1. CABLE ASSY LENGTH LABEL PLACEMENT: 84 INCHES OR LESS, ONE LABEL APPROXIMATELY CENTERED. LONGER THAN 84 INCHES, TWO LABELS APPROXIMATELY 12 INCHES FROM EACH CONNECTOR.
- 2. CABLE ASSEMBLY LENGTH DETERMINED BY ITEM PN AND DESCRIPTION.
- 3. PIM LEVEL LABEL PLACEMENT: APPROXIMATELY 6 INCHES FROM CABLE END, 1 PLACE, FOR ALL LENGTHS OF CABLE.
- 4. CABLES ASSEMBLIES SHALL BE TESTED FOR CONTINUITY.

THE INFORMATION CONTAINED IN THIS DRAWING IS THE SOLE PROPERTY OF INFINITE ELECTRONICS, INC. ANY REPRODUCTION IN PART OR WHOLE WITHOUT THE WRITTEN PERMISSION OF INFINITE ELECTRONICS, INC. IS PROHIBITED. THESE COMMODITIES, TECHNOLOGY OR SOFTWARE WERE EXPORTED FROM THE UNITED STATES IN ACCORDANCE WITH THE EXPORT ADMINISTRATION REGULATIONS. DIVERSION CONTRARY TO U.S. LAW PROHIBITED.

PE DS Rev-04 A4326