

SSMB Plug to BNC Female Cable Using RG188 Coax



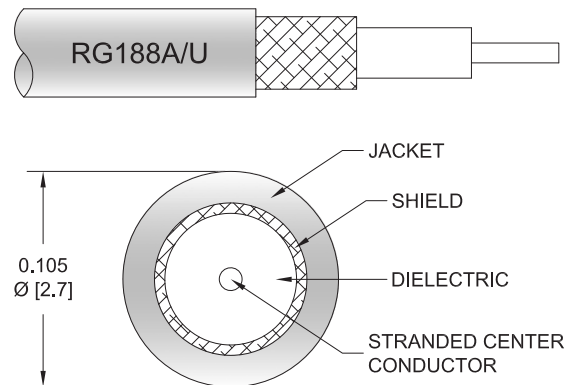
PE3W16123

Configuration

- Connector 1: SSMB Plug
- Connector 2: BNC Female
- Cable Type: RG188
- Coax Flex Type: Flexible

Features

- Max Frequency 1 GHz
- PTFE Jacket



Applications

- General Purpose
- Laboratory Use

Description

Pasternack's PE3W16123 SSMB plug to BNC female cable using RG188 coax is part of our full line of RF components available for same-day shipping. Pasternack's flexible RF cable assemblies are ideal for applications where tight bends and flexure are required. This Pasternack SSMB to BNC cable assembly has a plug to female gender configuration with 50 ohm flexible RG188 coax. The PE3W16123 SSMB plug to BNC female cable assembly operates to 1 GHz.

Custom versions of most RF cable assemblies can be built and shipped same day. Custom cable assembly lengths can be obtained by specifying the desired length on the web site at time of order or by contacting a sales representative. Other available RF cable assembly value added services include connector orientation or clocking, heat shrink booting and custom labeling. RF testing can also be performed to document the electrical performance of your cable assembly.

Electrical Specifications

Description	Minimum	Typical	Maximum	Units
Frequency Range	DC		1	GHz
VSWR			1.4:1	

Specifications by Frequency

SSMB Plug to BNC Female Cable Using RG188 Coax



PE3W16123

Part Number	Length	Description	F1	F2	F3	F4	F5	Units	Weight (lbs)
			Frequency		50	100	250	500	
PE3W16123	Custom Lengths Available	Insertion Loss (Typ.)	0.03	0.05	0.13	0.25	0.5	dB/ft	
			0.09	0.17	0.42	0.83	1.65	dB/m	
PE3W16123-12	12 inch	Insertion Loss (Typ.)	0.23	0.25	0.33	0.45	0.7	dB	0.04
PE3W16123-24	24 inch	Insertion Loss (Typ.)	0.25	0.3	0.45	0.7	1.2	dB	0.051
PE3W16123-36	36 inch	Insertion Loss (Typ.)	0.28	0.35	0.58	0.95	1.7	dB	0.061
PE3W16123-48	48 inch	Insertion Loss (Typ.)	0.3	0.4	0.7	1.2	2.2	dB	0.071
PE3W16123-72	72 inch	Insertion Loss (Typ.)	0.35	0.5	0.95	1.7	3.2	dB	0.091

The insertion loss data for the base model does not include loss due to the connectors. Each length includes insertion loss due to the connectors.

Loss due to Connector 1:	0.1 dB
Loss due to Connector 2:	0.1 dB
Base Weight:	0.04 pounds
Additional Weight per Inch:	0.00084 pounds

Mechanical Specifications

Cable Assembly

Width/Diameter	0.5 in [12.7 mm]
Weight	0.04 lbs [18.14 g]

Cable

Cable Type	RG188
Impedance	50 Ohms
Inner Conductor Type	Stranded
Inner Conductor Material and Plating	Copper Clad Steel, Silver
Dielectric Type	PTFE
Number of Shields	1
Shield Layer 1	Silver Plated Copper Braid
Jacket Material	PTFE, White
Jacket Diameter	0.11 in [2.79 mm]

SSMB Plug to BNC Female Cable Using RG188 Coax



PE3W16123

Connectors

Description	Connector 1	Connector 2
Type	SSMB Plug	BNC Female
Specification	MIL-STD-348A	MIL-STD-348A
Impedance	50 Ohms	50 Ohms
Configuration	Straight	Straight
Contact Material and Plating	Beryllium Copper, Gold	Brass, Gold
Contact Plating Specification	30 µin minimum	30 µin minimum
Dielectric Type	PTFE	PTFE
Outer Conductor Material and Plating	Beryllium Copper, Gold	
Outer Conductor Plating Specification	30 µin minimum	
Body Material and Plating	Brass, Gold	Brass, Nickel
Body Plating Specification	30 µin minimum	100 µin minimum

Environmental Specifications

Operating Range Temperature -55 to +165 deg C

Compliance Certifications (see [product page](#) for current document)

Plotted and Other Data

Notes:

SSMB Plug to BNC Female Cable Using RG188 Coax



PE3W16123

Typical Performance Data

How to Order

Part Number Configuration:

PE3W16123

- **xx**

uu

Unit of Measure:

cm = Centimeters

<blank> = Inches

Length

Base Number

Example: PE3W16123-12 = 12 inches long cable
PE3W16123-100cm = 100 cm long cable

SSMB Plug to BNC Female Cable Using RG188 Coax from Pasternack Enterprises has same day shipment for domestic and International orders. Our RF, microwave and millimeter wave products maintain a 99.4% availability and are part of the broadest selection in the industry.

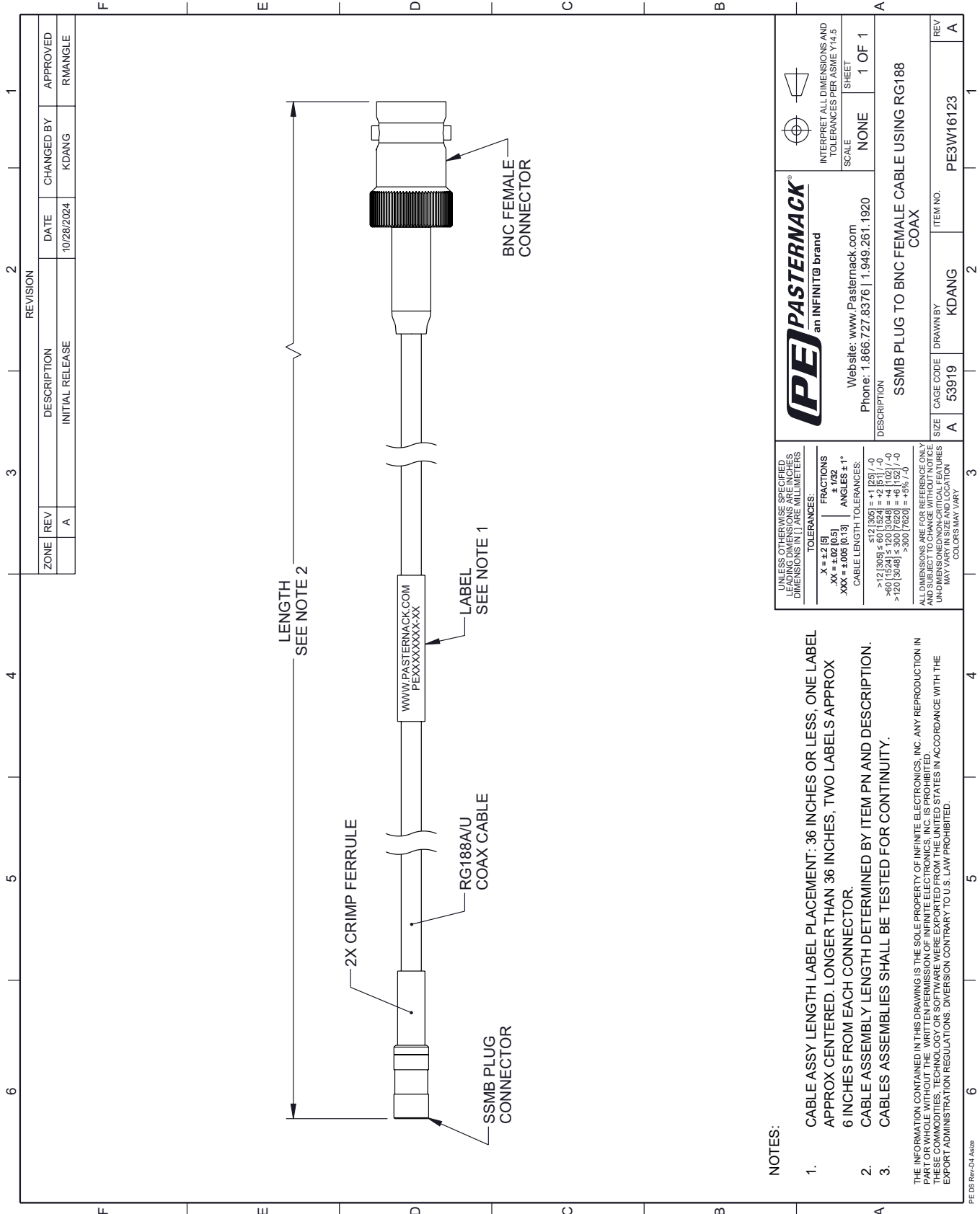
Click the following link (or enter part number in "SEARCH" on website) to obtain additional part information including price, inventory and certifications: [SSMB Plug to BNC Female Cable Using RG188 Coax PE3W16123](#)

URL: <https://www.pasternack.com/ssmb-plug-to-bnc-female-cable-using-rg188-pe3w16123-p.aspx>

The information contained within this document is accurate to the best of our knowledge and representative of the part described herein. It may be necessary to make modifications to the part and/or the documentation of the part in order to impliment improvements. Pasternack Enterprises reserves the right to make such changes as required. Unless otherwise stated, all specifications are nominal. Pasternack Enterprises does not make any representation or warranty regarding the suitability of the part described herein for any particular purpose, and Pasternack Enterprises does not assume liability arising out of the use of any part or document.

PE3W16123 CAD Drawing

SSMB Plug to BNC Female Cable Using RG188 Coax



REVISION		DATE	CHANGED BY	APPROVED
ZONE	REV			
	A	10/28/2024	KDANG	RMANGLE
DESCRIPTION				
INITIAL RELEASE				

PASTERNAK an INFINITB brand		INTERPRET ALL DIMENSIONS AND TOLERANCES PER ASME Y14.5 SCALE NONE SHEET 1 OF 1
Website: www.Pasternack.com Phone: 1.866.727.8376 1.949.261.1920		
DESCRIPTION SSMB PLUG TO BNC FEMALE CABLE USING RG188 COAX		
SIZE	CAGE CODE	ITEM NO.
A	53919	PE3W16123
DRAWN BY		REV
KDANG		A

NOTES:

- CABLE ASSY LENGTH LABEL PLACEMENT: .36 INCHES OR LESS, ONE LABEL APPROX CENTERED. LONGER THAN .36 INCHES, TWO LABELS APPROX .6 INCHES FROM EACH CONNECTOR.
- CABLE ASSEMBLY LENGTH DETERMINED BY ITEM PN AND DESCRIPTION.
- CABLE ASSEMBLIES SHALL BE TESTED FOR CONTINUITY.

UNLESS OTHERWISE SPECIFIED, LEADING DIMENSIONS ARE IN INCHES, DIMENSIONS IN [] ARE MILLIMETERS.

TOLERANCES:

.X = ±.2 [5]	FRACTIONS ± 1/32
.XX = ±.02 [0.5]	ANGLES ± 1°
.XXX = ±.005 [0.13]	

CABLE LENGTH TOLERANCES:

<12 [305]	±.12 [3.05]
>12 [305] ≤ 60 [1524]	±.12 [3.05]
>60 [1524] ≤ 120 [3048]	±.12 [3.05]
>120 [3048]	±.30 [7.62]

ALL DIMENSIONS ARE FOR REFERENCE ONLY. UNDIMENSIONED NON-CRITICAL FEATURES MAY VARY IN SIZE AND LOCATION. COLORS MAY VARY.

THE INFORMATION CONTAINED IN THIS DRAWING IS THE SOLE PROPERTY OF INFINITE ELECTRONICS, INC. ANY REPRODUCTION IN PART OR WHOLE WITHOUT THE WRITTEN PERMISSION OF INFINITE ELECTRONICS, INC. IS PROHIBITED. THESE COMMODITIES, TECHNOLOGY OR SOFTWARE WERE EXPORTED FROM THE UNITED STATES IN ACCORDANCE WITH THE EXPORT ADMINISTRATION REGULATIONS. DIVERSION CONTRARY TO U.S. LAW PROHIBITED.