

N Female 4 Hole Flange to N Male Right Angle Cable Using PE-SR402FL Coax



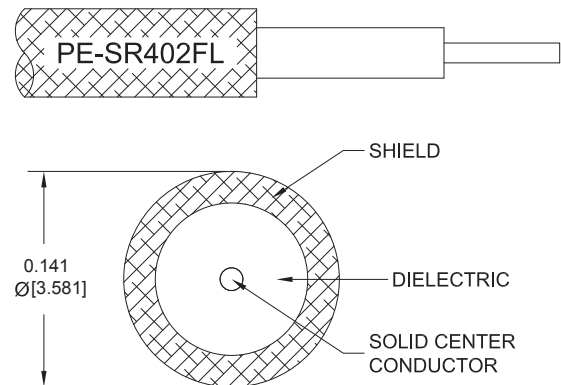
PE3W17432

Configuration

- Connector 1: N Female 4 Hole Flange
- Connector 2: N Male Right Angle
- Cable Type: PE-SR402FL
- Coax Flex Type: Formable

Features

- Max Frequency 3 GHz
- Shielding Effectivity > 110 dB
- 69.5% Phase Velocity



Applications

- General Purpose
- Laboratory Use

Description

Pasternack's PE3W17432 type N female 4 hole flange to type N male right angle cable using PE-SR402FL coax is part of our full line of RF components available for same-day shipping. Pasternack's formable RF cable assemblies provide an alternative to costly pre-formed semi-rigid assemblies since they are hand formable. This Pasternack type N to type N cable assembly has a female to male gender configuration with 50 ohm formable PE-SR402FL coax. The PE3W17432 type N female to type N male cable assembly operates to 3 GHz. The right angle type N interface on the PE-SR402FL cable allows for easier connections in tight spaces. Our RF cable assembly with type N 4 hole flange interface allows designers to create external connections on their product enclosures, and can be used in a variety of other rack mount and panel mount applications.

Custom versions of most RF cable assemblies can be built and shipped same day. Custom cable assembly lengths can be obtained by specifying the desired length on the web site at time of order or by contacting a sales representative. Other available RF cable assembly value added services include connector orientation or clocking, heat shrink booting and custom labeling. RF testing can also be performed to document the electrical performance of your cable assembly.

Electrical Specifications

Description	Minimum	Typical	Maximum	Units
Frequency Range	DC		3	GHz
VSWR			1.4:1	
Velocity of Propagation		69.5		%
RF Shielding	110			dB
Capacitance		29 [95.14]		pF/ft [pF/m]
DC Resistance Inner Conductor		7.8 [25.59]		Ohms/1000ft [Ohms/Km]
DC Resistance Outer Conductor		5.5 [18.04]		Ohms/1000ft [Ohms/Km]
Operating Voltage (AC)			500	Vrms

Specifications by Frequency

N Female 4 Hole Flange to N Male Right Angle Cable Using PE-SR402FL Coax



PE3W17432

Part Number	Length	Description	F1	F2	F3	Units	Weight (lbs)
			Frequency	500	1000	3000	
PE3W17432	Custom Lengths Available	Insertion Loss (Typ.)	0.08	0.12	0.205	dB/ft	
			0.27	0.4	0.68	dB/m	
PE3W17432-6	6 inch	Insertion Loss (Typ.)	0.34	0.36	0.41	dB	0.182
PE3W17432-9	9 inch	Insertion Loss (Typ.)	0.36	0.39	0.46	dB	0.188
PE3W17432-12	12 inch	Insertion Loss (Typ.)	0.38	0.42	0.51	dB	0.194
PE3W17432-18	18 inch	Insertion Loss (Typ.)	0.42	0.48	0.61	dB	0.207
PE3W17432-24	24 inch	Insertion Loss (Typ.)	0.46	0.54	0.71	dB	0.22

The insertion loss data for the base model does not include loss due to the connectors. Each length includes insertion loss due to the connectors.

Loss due to Connector 1:	0.1 dB
Loss due to Connector 2:	0.2 dB
Base Weight:	0.194 pounds
Additional Weight per Inch:	0.00209 pounds

Mechanical Specifications

Cable Assembly

Width/Diameter	0.5 in [12.7 mm]
Weight	0.194 lbs [88 g]

Cable

Cable Type	PE-SR402FL
Impedance	50 Ohms
Inner Conductor Type	Solid
Inner Conductor Material and Plating	Copper, Silver
Dielectric Type	PTFE
Outer Conductor 1 Material and Plating	Tinned Copper Braid
Repeated Minimum Bend Radius	0.625 in [15.88 mm]

N Female 4 Hole Flange to N Male Right Angle Cable Using PE-SR402FL Coax



PE3W17432

Connectors

Description	Connector 1	Connector 2
Type	N Female 4 Hole Flange	N Male Right Angle
Specification	MIL-STD-348A	MIL-STD-348
Impedance	50 Ohms	50 Ohms
Configuration	Straight	Right Angle
Contact Material and Plating	Brass, Gold	Brass, Gold over Nickel
Contact Plating Specification	30μ in. minimum	MIL-G-45204
Dielectric Type	PTFE	PTFE
Body Material and Plating	Brass, Nickel	Brass, Gold over Nickel
Body Plating Specification	100μ in. minimum	MIL-G-45204
Coupling Nut Material and Plating	Brass, Nickel	Brass, Nickel
Coupling Nut Plating Specification	100μ in. minimum	QQ-N-290
Seal Gasket Material	Silicone	

Environmental Specifications

Operating Range Temperature -55 to +125 deg C

Compliance Certifications (see [product page](#) for current document)

Plotted and Other Data

Notes:

N Female 4 Hole Flange to N Male Right Angle Cable Using PE-SR402FL Coax



PE3W17432

Typical Performance Data

How to Order

Part Number Configuration:

PE3W17432

- **xx**

uu

Unit of Measure:

cm = Centimeters

<blank> = Inches

Length

Base Number

Example: PE3W17432-12 = 12 inches long cable
PE3W17432-100cm = 100 cm long cable

N Female 4 Hole Flange to N Male Right Angle Cable Using PE-SR402FL Coax from Pasternack Enterprises has same day shipment for domestic and International orders. Our RF, microwave and millimeter wave products maintain a 99.4% availability and are part of the broadest selection in the industry.

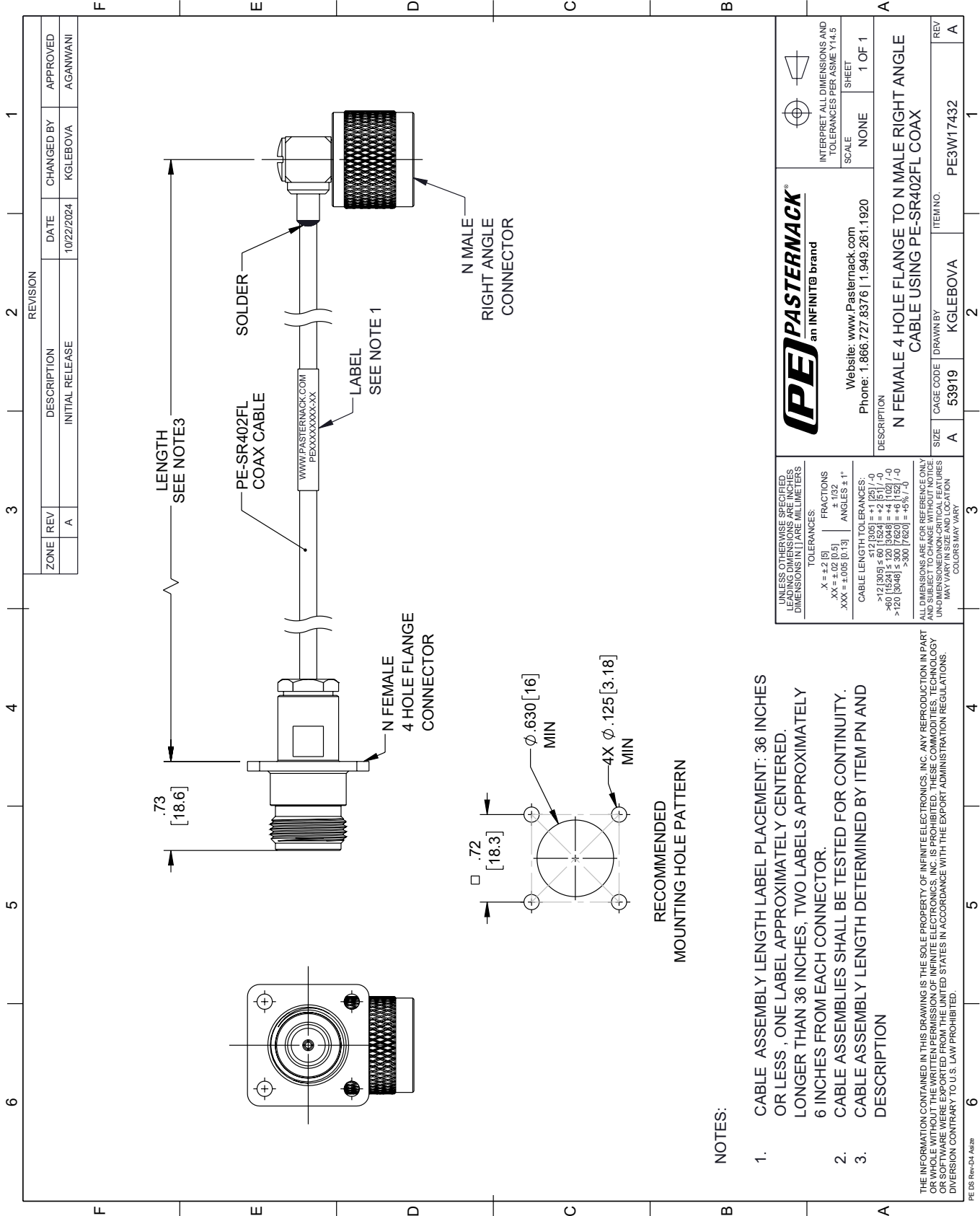
Click the following link (or enter part number in "SEARCH" on website) to obtain additional part information including price, inventory and certifications: [N Female 4 Hole Flange to N Male Right Angle Cable Using PE-SR402FL Coax PE3W17432](#)

URL: <https://www.pasternack.com/n-female-4-hole-flange-to-n-male-cable-using-pe-sr402fl-pe3w17432-p.aspx>

The information contained within this document is accurate to the best of our knowledge and representative of the part described herein. It may be necessary to make modifications to the part and/or the documentation of the part in order to implement improvements. Pasternack Enterprises reserves the right to make such changes as required. Unless otherwise stated, all specifications are nominal. Pasternack Enterprises does not make any representation or warranty regarding the suitability of the part described herein for any particular purpose, and Pasternack Enterprises does not assume liability arising out of the use of any part or document.

PE3W17432 CAD Drawing

N Female 4 Hole Flange to N Male Right Angle Cable Using PE-SR402FL Coax



NOTES:

1. CABLE ASSEMBLY LENGTH LABEL PLACEMENT: 36 INCHES OR LESS, ONE LABEL APPROXIMATELY CENTERED. LONGER THAN 36 INCHES, TWO LABELS APPROXIMATELY 6 INCHES FROM EACH CONNECTOR.
2. CABLE ASSEMBLIES SHALL BE TESTED FOR CONTINUITY.
3. CABLE ASSEMBLY LENGTH DETERMINED BY ITEM PN AND DESCRIPTION

THE INFORMATION CONTAINED IN THIS DRAWING IS THE SOLE PROPERTY OF INFINITE ELECTRONICS, INC. ANY REPRODUCTION IN PART OR WHOLE WITHOUT THE WRITTEN PERMISSION OF INFINITE ELECTRONICS, INC. IS PROHIBITED. THESE COMMODITIES, TECHNOLOGY OR SOFTWARE ARE EXPORTED FROM THE UNITED STATES IN ACCORDANCE WITH THE EXPORT ADMINISTRATION REGULATIONS. DIVERSION CONTRARY TO U.S. LAW PROHIBITED.

<p>UNLESS OTHERWISE SPECIFIED, LEADING DIMENSIONS ARE IN INCHES. DIMENSIONS IN [] ARE MILLIMETERS.</p> <p>TOLERANCES: .X = ±.2 [5] .XX = ±.02 [0.5] .XXX = ±.005 [0.13]</p> <p>FRACTIONS: ± 1/32 ANGLES ± 1°</p> <p>CABLE LENGTH TOLERANCES: <12 [305] ≤ 60 [1524] = ±1 [25] / -0 >60 [1524] ≤ 120 [3048] = ±4 [102] / -0 >120 [3048] ≤ 300 [7620] = ±5% / -0</p> <p>ALL DIMENSIONS ARE FOR REFERENCE ONLY. UNLESS OTHERWISE SPECIFIED, DIMENSIONS MAY VARY IN SIZE AND LOCATION. COLORS MAY VARY.</p>		<p>PE PASTERNAK an INFINITI brand</p> <p>Website: www.Pasternack.com Phone: 1.866.727.8376 1.949.261.1920</p>		<p>INTERPRET ALL DIMENSIONS AND TOLERANCES PER ASME Y14.5</p> <p>SCALE: NONE SHEET: 1 OF 1</p>	
<p>DESCRIPTION: N FEMALE 4 HOLE FLANGE TO N MALE RIGHT ANGLE CABLE USING PE-SR402FL COAX</p>		<p>ITEM NO.: PE3W17432</p>		<p>REV: A</p>	
<p>SIZE: A</p>		<p>CAGE CODE: 53919</p>		<p>DRAWN BY: KGLEBOVA</p>	

RECOMMENDED MOUNTING HOLE PATTERN

