

SMA Male Right Angle to BNC Female Bulkhead Cable Using RG174 Coax



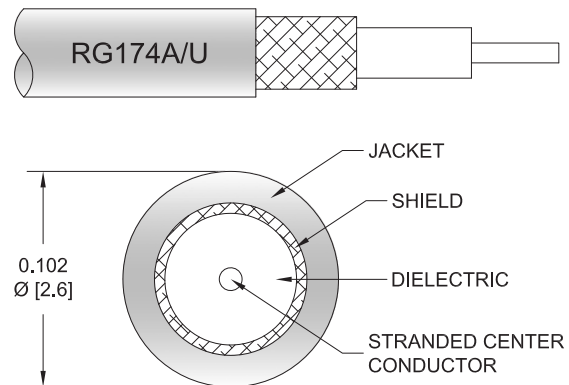
PE3W19026

Configuration

- Connector 1: SMA Male Right Angle
- Connector 2: BNC Female Bulkhead
- Cable Type: RG174
- Coax Flex Type: Flexible

Features

- Max Frequency 1 GHz
- 66% Phase Velocity
- PVC Jacket



Applications

- General Purpose
- Laboratory Use

Description

Pasternack's PE3W19026 SMA male right angle to BNC female bulkhead cable using RG174 coax is part of our full line of RF components available for same-day shipping. Pasternack's flexible RF cable assemblies are ideal for applications where tight bends and flexure are required. This Pasternack SMA to BNC cable assembly has a male to female gender configuration with 50 ohm flexible RG174 coax. The PE3W19026 SMA male to BNC female cable assembly operates to 1 GHz. The right angle SMA interface on the RG174 cable allows for easier connections in tight spaces. Our RF cable assembly with BNC bulkhead interface allows designers to create external connections on their product enclosures, and can be used in a variety of other rack mount and panel mount applications.

Custom versions of most RF cable assemblies can be built and shipped same day. Custom cable assembly lengths can be obtained by specifying the desired length on the web site at time of order or by contacting a sales representative. Other available RF cable assembly value added services include connector orientation or clocking, heat shrink booting and custom labeling. RF testing can also be performed to document the electrical performance of your cable assembly.

Electrical Specifications

Description	Minimum	Typical	Maximum	Units
Frequency Range	DC		1	GHz
VSWR			1.4:1	
Velocity of Propagation		66		%
Capacitance		31.08 [101.97]		pF/ft [pF/m]

Specifications by Frequency

SMA Male Right Angle to BNC Female
Bulkhead Cable Using RG174 Coax



PE3W19026

Part Number	Length	Description	F1	F2	F3	F4	Units	Weight (lbs)
			Frequency	100	250	500	1000	
PE3W19026	Custom Lengths Available	Insertion Loss (Typ.)	0.08	0.14	0.211	0.32	dB/ft	
			0.28	0.45	0.7	1.05	dB/m	
PE3W19026-12	12 inch	Insertion Loss (Typ.)	0.39	0.44	0.52	0.62	dB	0.07
PE3W19026-24	24 inch	Insertion Loss (Typ.)	0.47	0.58	0.73	0.94	dB	0.079
PE3W19026-36	36 inch	Insertion Loss (Typ.)	0.56	0.72	0.94	1.26	dB	0.088
PE3W19026-48	48 inch	Insertion Loss (Typ.)	0.64	0.85	1.15	1.58	dB	0.097
PE3W19026-72	72 inch	Insertion Loss (Typ.)	0.81	1.13	1.57	2.22	dB	0.115

The insertion loss data for the base model does not include loss due to the connectors. Each length includes insertion loss due to the connectors.

Loss due to Connector 1:	0.2 dB
Loss due to Connector 2:	0.1 dB
Base Weight:	0.07 pounds
Additional Weight per Inch:	0.00075 pounds

Mechanical Specifications

Cable Assembly

Width/Diameter	0.5 in [12.7 mm]
Weight	0.07 lbs [31.75 g]

Cable

Cable Type	RG174
Impedance	50 Ohms
Inner Conductor Type	Stranded
Inner Conductor Material and Plating	Copper Clad Steel
Dielectric Type	PE
Number of Shields	1
Shield Layer 1	Tinned Copper Braid
Jacket Material	PVC, Black
Jacket Diameter	0.11 in [2.79 mm]

SMA Male Right Angle to BNC Female Bulkhead Cable Using RG174 Coax



PE3W19026

Connectors

Description	Connector 1	Connector 2
Type	SMA Male Right Angle	BNC Female Bulkhead
Specification	MIL-STD-348A	
Impedance	50 Ohms	50 Ohms
Configuration	Right Angle	Straight
Contact Material and Plating	Brass, Nickel	Brass, Gold
Contact Plating Specification	50 µin minimum	30 µin minimum
Dielectric Type	PTFE	PTFE
Body Material and Plating	Brass, Nickel	Brass, Nickel
Body Plating Specification	100 µin minimum	100 µin minimum
Coupling Nut Material and Plating	Brass, Nickel	
Coupling Nut Plating Specification	100 µin minimum	
Hex Size	5/16 inch	

Environmental Specifications

Operating Range Temperature -40 to +80 deg C

Compliance Certifications (see [product page](#) for current document)

Plotted and Other Data

Notes:

SMA Male Right Angle to BNC Female Bulkhead Cable Using RG174 Coax



PE3W19026

Typical Performance Data

How to Order

Part Number Configuration:

PE3W19026

- **xx**

uu

Unit of Measure:

cm = Centimeters

<blank> = Inches

Length

Base Number

Example: PE3W19026-12 = 12 inches long cable
PE3W19026-100cm = 100 cm long cable

SMA Male Right Angle to BNC Female Bulkhead Cable Using RG174 Coax from Pasternack Enterprises has same day shipment for domestic and International orders. Our RF, microwave and millimeter wave products maintain a 99.4% availability and are part of the broadest selection in the industry.

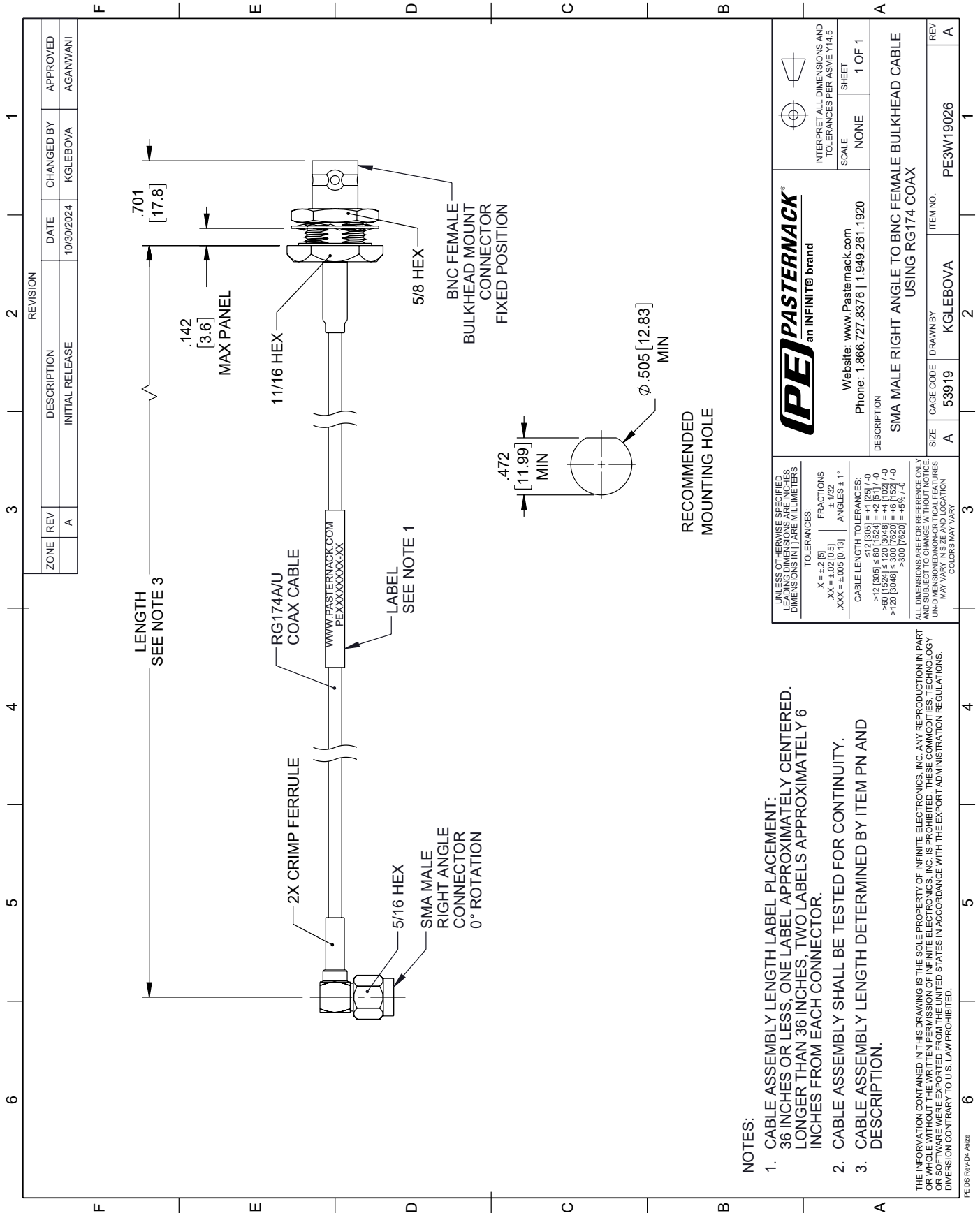
Click the following link (or enter part number in "SEARCH" on website) to obtain additional part information including price, inventory and certifications: [SMA Male Right Angle to BNC Female Bulkhead Cable Using RG174 Coax PE3W19026](https://www.pasternack.com/sma-male-right-angle-to-bnc-female-bulkhead-cable-using-rg174-pe3w19026-p.aspx)

URL: <https://www.pasternack.com/sma-male-right-angle-to-bnc-female-bulkhead-cable-using-rg174-pe3w19026-p.aspx>

The information contained within this document is accurate to the best of our knowledge and representative of the part described herein. It may be necessary to make modifications to the part and/or the documentation of the part in order to implement improvements. Pasternack Enterprises reserves the right to make such changes as required. Unless otherwise stated, all specifications are nominal. Pasternack Enterprises does not make any representation or warranty regarding the suitability of the part described herein for any particular purpose, and Pasternack Enterprises does not assume liability arising out of the use of any part or document.

PE3W19026 CAD Drawing

SMA Male Right Angle to BNC Female Bulkhead Cable Using RG174 Coax



NOTES:

1. CABLE ASSEMBLY LENGTH LABEL PLACEMENT: 36 INCHES OR LESS, ONE LABEL APPROXIMATELY CENTERED. LONGER THAN 36 INCHES, TWO LABELS APPROXIMATELY 6 INCHES FROM EACH CONNECTOR.
2. CABLE ASSEMBLY SHALL BE TESTED FOR CONTINUITY.
3. CABLE ASSEMBLY LENGTH DETERMINED BY ITEM PN AND DESCRIPTION.

THE INFORMATION CONTAINED IN THIS DRAWING IS THE SOLE PROPERTY OF INFINITE ELECTRONICS, INC. ANY REPRODUCTION IN PART OR WHOLE WITHOUT THE WRITTEN PERMISSION OF INFINITE ELECTRONICS, INC. IS PROHIBITED. THESE COMMODITIES, TECHNOLOGY OR SOFTWARE WERE EXPORTED FROM THE UNITED STATES IN ACCORDANCE WITH THE EXPORT ADMINISTRATION REGULATIONS. DIVERSION CONTRARY TO U.S. LAW PROHIBITED.

UNLESS OTHERWISE SPECIFIED LEADING DIMENSIONS ARE IN INCHES DIMENSIONS IN PARENTHESES ARE IN MILLIMETERS		 PASTERNAK an INFINIT [®] brand		INTERPRET ALL DIMENSIONS AND TOLERANCES PER ASME Y14.5 SCALE NONE SHEET 1 OF 1	
TOLERANCES: .X = ±.02 [0.5] .XX = ±.02 [0.5] .XXX = ±.005 [0.13]		FRACTIONS ± 1/32 ANGLES ± 1°		Website: www.Pasternack.com Phone: 1.866.727.8376 1.949.261.1920	
CABLE LENGTH TOLERANCES: >12 (305) ≤ 60 (1524) = +1 (25) / -0 >60 (1524) ≤ 120 (3048) = +4 (102) / -0 >120 (3048) ≤ 300 (7620) = +5 (127) / -0 >300 (7620) = +5 (127) / -0		DESCRIPTION SMA MALE RIGHT ANGLE TO BNC FEMALE BULKHEAD CABLE USING RG174 COAX		ITEM NO. PE3W19026	
ALL DIMENSIONS ARE FOR REFERENCE ONLY UNLESS OTHERWISE SPECIFIED UNDIMENSIONED CRITICAL FEATURES MAY VARY IN SIZE AND LOCATION COLORS MAY VARY		DRAWN BY KGLEBOVA		REV A	