

SMA Female Bulkhead to MMCX Plug Cable Using Tinned RG405 Coax



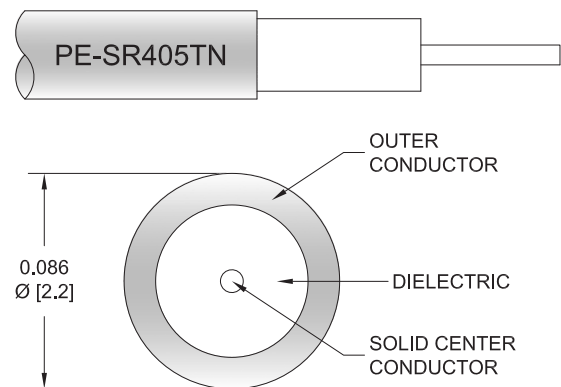
PE3W19144

Configuration

- Connector 1: SMA Female Bulkhead
- Connector 2: MMCX Plug
- Cable Type: RG405 Tinned
- Coax Flex Type: Semi-Rigid

Features

- Max Frequency 6 GHz



Applications

- General Purpose
- Laboratory Use

Description

Pasternack's PE3W19144 SMA female bulkhead to MMCX plug cable using tinned RG405 coax is part of our full line of RF components available for same-day shipping. Pasternack's semi-rigid RF cable assemblies are ideal for high performance applications and can be formed, using proper tooling, to the routing pattern required. This Pasternack SMA to MMCX cable assembly has a female to plug gender configuration with 50 ohm semi-rigid RG405 tinned coax. The PE3W19144 SMA female to MMCX plug cable assembly operates to 6 GHz. Our RF cable assembly with SMA bulkhead interface allows designers to create external connections on their product enclosures, and can be used in a variety of other rack mount and panel mount applications.

Custom versions of most RF cable assemblies can be built and shipped same day. Custom cable assembly lengths can be obtained by specifying the desired length on the web site at time of order or by contacting a sales representative. Other available RF cable assembly value added services include connector orientation or clocking, heat shrink booting and custom labeling. RF testing can also be performed to document the electrical performance of your cable assembly.

Electrical Specifications

Description	Minimum	Typical	Maximum	Units
Frequency Range	DC		6	GHz
VSWR			1.4:1	

Specifications by Frequency

SMA Female Bulkhead to MMCX Plug Cable Using Tinned RG405 Coax



PE3W19144

Part Number	Length	Description	F1	F2	F3	F4	Units	Weight (lbs)
			Frequency	1000	2500	5000	6000	
PE3W19144	Custom Lengths Available	Insertion Loss (Typ.)	0.22	0.32	0.477	0.542	dB/ft	
			0.73	1.05	1.57	1.78	dB/m	
PE3W19144-6	6 inch	Insertion Loss (Typ.)	0.31	0.36	0.44	0.48	dB	0.023
PE3W19144-12	12 inch	Insertion Loss (Typ.)	0.42	0.52	0.68	0.75	dB	0.029
PE3W19144-18	18 inch	Insertion Loss (Typ.)	0.53	0.68	0.92	1.02	dB	0.036
PE3W19144-24	24 inch	Insertion Loss (Typ.)	0.64	0.84	1.16	1.29	dB	0.043
PE3W19144-36	36 inch	Insertion Loss (Typ.)	0.86	1.16	1.64	1.83	dB	0.056

The insertion loss data for the base model does not include loss due to the connectors. Each length includes insertion loss due to the connectors.

Loss due to Connector 1:	0.1 dB
Loss due to Connector 2:	0.1 dB
Base Weight:	0.029 pounds
Additional Weight per Inch:	0.00109 pounds

Mechanical Specifications

Cable Assembly

Width/Diameter	0.5 in [12.7 mm]
Weight	0.029 lbs [13.15 g]

Cable

Cable Type	RG405 Tinned
Impedance	50 Ohms
Inner Conductor Type	Solid
Inner Conductor Material and Plating	Copper Clad Steel, Silver
Dielectric Type	PTFE
Number of Shields	1
Outer Conductor 1 Material and Plating	Tinned Copper
One Time Minimum Bend Radius	0.05 in [1.27 mm]

Connectors

Description	Connector 1	Connector 2
Type	SMA Female Bulkhead	MMCX Plug
Specification	MIL-STD-348A	
Impedance	50 Ohms	50 Ohms
Configuration	Straight	Straight
Contact Material and Plating	Beryllium Copper, Gold	Brass, Gold
Contact Plating Specification	50 µin minimum	
Dielectric Type	PTFE	PTFE
Body Material and Plating	Stainless Steel, Gold	Brass, Gold
Body Plating Specification	30 µin minimum	

SMA Female Bulkhead to MMCX Plug Cable Using Tinned RG405 Coax



PE3W19144

Environmental Specifications

Operating Range Temperature -55 to +125 deg C

Compliance Certifications (see [product page](#) for current document)

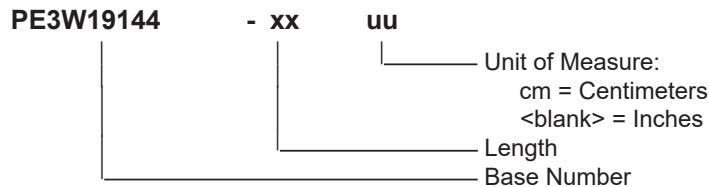
Plotted and Other Data

Notes:

Typical Performance Data

How to Order

Part Number Configuration:



Example: PE3W19144-12 = 12 inches long cable
PE3W19144-100cm = 100 cm long cable

SMA Female Bulkhead to MMCX Plug Cable Using Tinned RG405 Coax from Pasternack Enterprises has same day shipment for domestic and International orders. Our RF, microwave and millimeter wave products maintain a 99.4% availability and are part of the broadest selection in the industry.

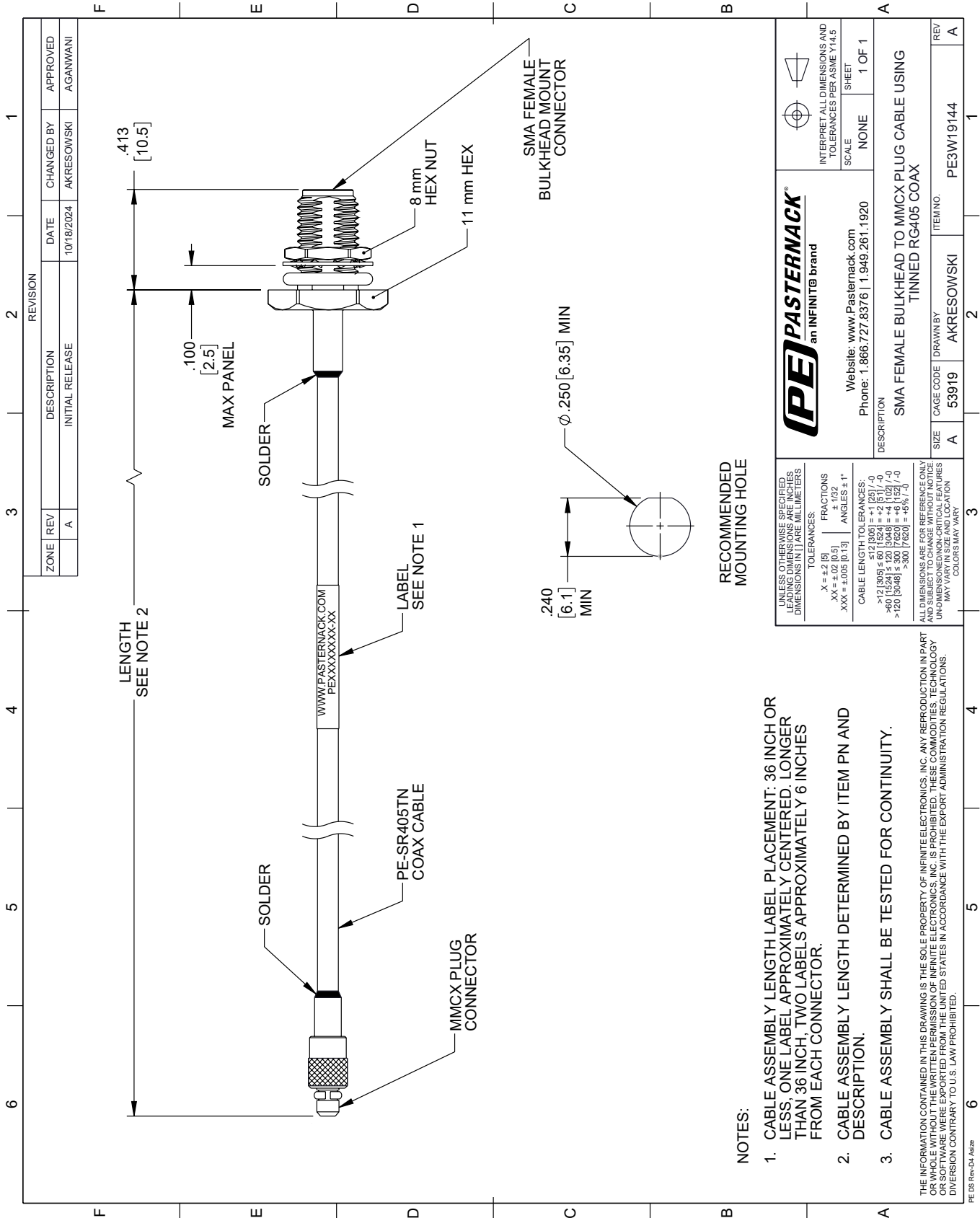
Click the following link (or enter part number in "SEARCH" on website) to obtain additional part information including price, inventory and certifications: [SMA Female Bulkhead to MMCX Plug Cable Using Tinned RG405 Coax PE3W19144](#)

URL: <https://www.pasternack.com/sma-female-bulkhead-to-mmcx-plug-cable-using-tinned-rg405-pe3w19144-p.aspx>

The information contained within this document is accurate to the best of our knowledge and representative of the part described herein. It may be necessary to make modifications to the part and/or the documentation of the part in order to implement improvements. Pasternack Enterprises reserves the right to make such changes as required. Unless otherwise stated, all specifications are nominal. Pasternack Enterprises does not make any representation or warranty regarding the suitability of the part described herein for any particular purpose, and Pasternack Enterprises does not assume liability arising out of the use of any part or document.

PE3W19144 CAD Drawing

SMA Female Bulkhead to MMCX Plug Cable Using Tinned RG405 Coax



THE INFORMATION CONTAINED IN THIS DRAWING IS THE SOLE PROPERTY OF INFINITE ELECTRONICS, INC. ANY REPRODUCTION IN PART OR WHOLE WITHOUT THE WRITTEN PERMISSION OF INFINITE ELECTRONICS, INC. IS PROHIBITED. THESE COMMODITIES, TECHNOLOGY OR SOFTWARE ARE EXPORTED FROM THE UNITED STATES IN ACCORDANCE WITH THE EXPORT ADMINISTRATION REGULATIONS. DIVERSION CONTRARY TO U.S. LAW PROHIBITED.

PE DS Rev-04 Add2