

## N Female to N Male Low Loss Cable Using LMR-LW600 Coax



### PE3W19217

#### Configuration

- Connector 1: N Female
- Connector 2: N Male
- Cable Type: LMR-LW600
- Coax Flex Type: Flexible

#### Features

- Max Frequency 8 GHz
- Shielding Effectivity > 90 dB
- 85% Phase Velocity
- Double Shielded
- PE Jacket

#### Applications

- General Purpose
- Laboratory Use

#### Description

Pasternack's PE3W19217 type N female to type N male cable using LMR-LW600 coax is part of our full line of RF components available for same-day shipping. Pasternack's flexible RF cable assemblies are ideal for applications where tight bends and flexure are required. This Pasternack type N to type N cable assembly has a female to male gender configuration with 50 ohm flexible LMR-LW600 coax. The PE3W19217 type N female to type N male cable assembly operates to 8 GHz. The double shielding of this Pasternack cable assembly provides excellent shielding effectiveness of better than 90 dB.

Custom versions of most RF cable assemblies can be built and shipped same day. Custom cable assembly lengths can be obtained by specifying the desired length on the web site at time of order or by contacting a sales representative. Other available RF cable assembly value added services include connector orientation or clocking, heat shrink booting and custom labeling. RF testing can also be performed to document the electrical performance of your cable assembly.

#### Electrical Specifications

Description	Minimum	Typical	Maximum	Units
Frequency Range	DC		8	GHz
VSWR			1.4:1	
Velocity of Propagation		85		%
RF Shielding	90			dB
Group Delay		1.17 [3.84]		ns/ft [ns/m]
Capacitance		23.4 [76.77]		pF/ft [pF/m]
Inductance		0.058 [0.19]		uH/ft [uH/m]
DC Resistance Inner Conductor		0.53 [1.74]		Ohms/1000ft [Ohms/Km]
DC Resistance Outer Conductor		4.4 [14.44]		Ohms/1000ft [Ohms/Km]
Jacket Spark			8,000	Vrms

#### Specifications by Frequency

## N Female to N Male Low Loss Cable Using LMR-LW600 Coax



### PE3W19217

Part Number	Length	Description	F1	F2	F3	F4	F5	Units	Weight (lbs)
			Frequency					MHz	
PE3W19217	Custom Lengths Available	Insertion Loss (Typ.)	0.018	0.026	0.039	0.07	0.088	dB/ft	
			0.06	0.09	0.13	0.23	0.29	dB/m	
PE3W19217-24	24 inch	Insertion Loss (Typ.)	0.24	0.26	0.28	0.34	0.38	dB	0.497
PE3W19217-36	36 inch	Insertion Loss (Typ.)	0.26	0.28	0.32	0.41	0.47	dB	0.601
PE3W19217-48	48 inch	Insertion Loss (Typ.)	0.28	0.31	0.36	0.48	0.56	dB	0.705
PE3W19217-120	120 inch	Insertion Loss (Typ.)	0.38	0.46	0.59	0.9	1.08	dB	1.329
PE3W19217-180	180 inch	Insertion Loss (Typ.)	0.47	0.59	0.79	1.25	1.52	dB	1.849

The insertion loss data for the base model does not include loss due to the connectors. Each length includes insertion loss due to the connectors.

Loss due to Connector 1:	0.1 dB
Loss due to Connector 2:	0.1 dB
Base Weight:	0.497 pounds
Additional Weight per Inch:	0.00867 pounds

### Mechanical Specifications

#### Cable Assembly

Width/Diameter	0.5 in [12.7 mm]
Weight	0.392 lbs [177.81 g]

#### Cable

Cable Type	LMR-LW600
Impedance	50 Ohms
Inner Conductor Type	Solid
Inner Conductor Material and Plating	Copper
Dielectric Type	Foam PE
Number of Shields	2
Shield Layer 1	Aluminum Tape
Shield Layer 2	Aluminum
Jacket Material	PE, Black
Jacket Diameter	0.59 in [14.99 mm]
One Time Minimum Bend Radius	1.5 in [38.1 mm]
Repeated Minimum Bend Radius	6 in [152.4 mm]
Bending Moment	2.75 lbs-ft [3.73 N-m]
Flat Plate Crush	60 lbs/in [1.07 Kg/mm]
Tensile Strength	260 lbs [117.93 Kg]

## N Female to N Male Low Loss Cable Using LMR-LW600 Coax



### PE3W19217

#### Connectors

Description	Connector 1	Connector 2
Type	N Female	N Male
Impedance	50 Ohms	50 Ohms
Configuration	Straight	Straight
Contact Material and Plating	Phosphor Bronze, Gold	Brass, Gold
Dielectric Type	PTFE	PTFE
Body Material and Plating	Brass, Tri-Metal	Brass, Tri-Metal
Coupling Nut Material and Plating		Brass, Tri-Metal
Hex Size		18 mm

#### Environmental Specifications

Operating Range Temperature -40 to +85 deg C

**Compliance Certifications** (see [product page](#) for current document)

#### Plotted and Other Data

Notes:

## N Female to N Male Low Loss Cable Using LMR-LW600 Coax



### PE3W19217

#### Typical Performance Data

#### How to Order

Part Number Configuration:

**PE3W19217**

- **xx**

**uu**

Unit of Measure:

cm = Centimeters

<blank> = Inches

Length

Base Number

Example: PE3W19217-12 = 12 inches long cable  
PE3W19217-100cm = 100 cm long cable

N Female to N Male Low Loss Cable Using LMR-LW600 Coax from Pasternack Enterprises has same day shipment for domestic and International orders. Our RF, microwave and millimeter wave products maintain a 99.4% availability and are part of the broadest selection in the industry.

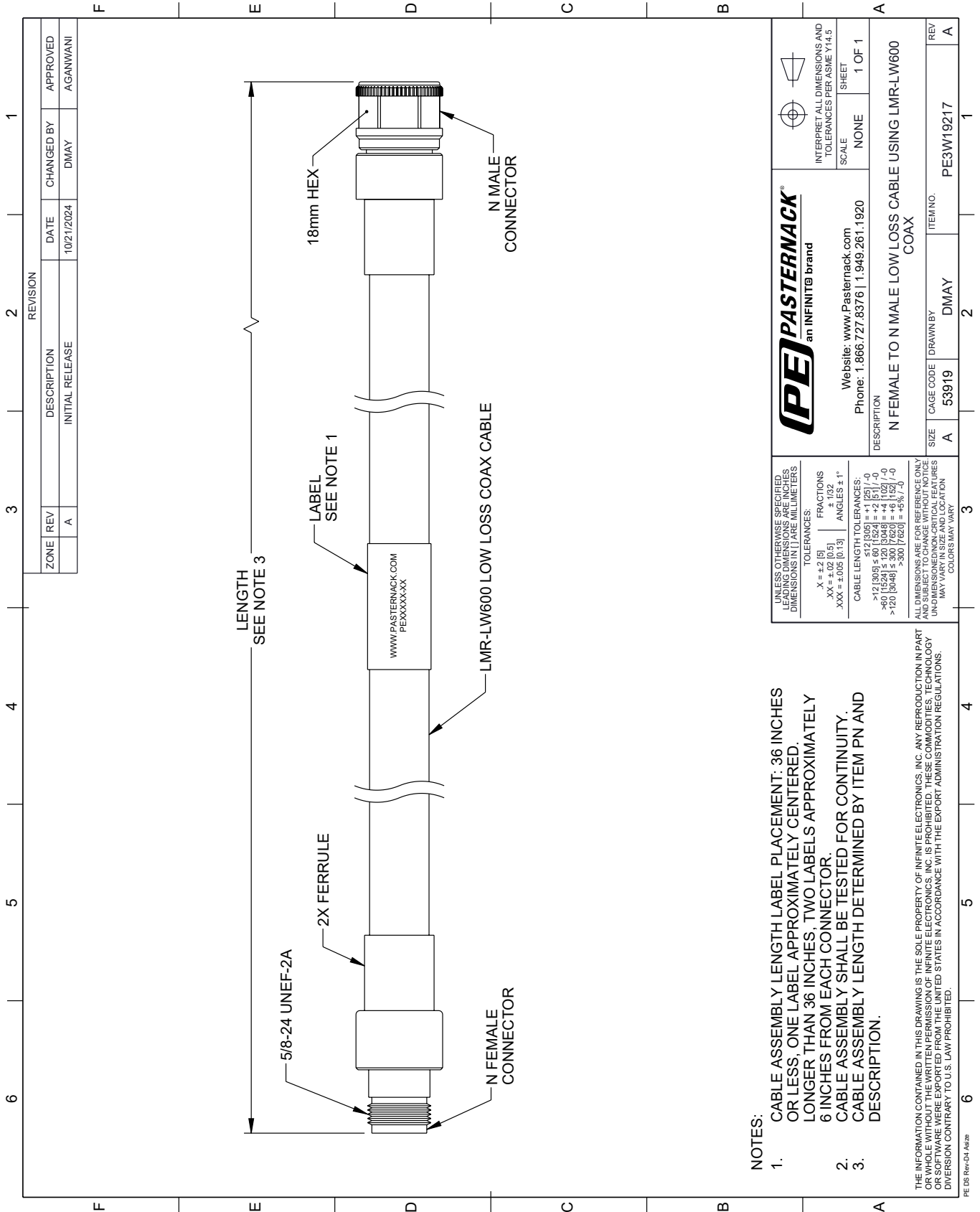
Click the following link (or enter part number in "SEARCH" on website) to obtain additional part information including price, inventory and certifications: [N Female to N Male Low Loss Cable Using LMR-LW600 Coax PE3W19217](#)

URL: <https://www.pasternack.com/n-female-to-n-male-low-loss-cable-using-lmr-lw600-pe3w19217-p.aspx>

The information contained within this document is accurate to the best of our knowledge and representative of the part described herein. It may be necessary to make modifications to the part and/or the documentation of the part in order to implement improvements. Pasternack Enterprises reserves the right to make such changes as required. Unless otherwise stated, all specifications are nominal. Pasternack Enterprises does not make any representation or warranty regarding the suitability of the part described herein for any particular purpose, and Pasternack Enterprises does not assume liability arising out of the use of any part or document.

# PE3W19217 CAD Drawing


N Female to N Male Low Loss Cable Using LMR-LW600 Coax



**NOTES:**

1. CABLE ASSEMBLY LENGTH LABEL PLACEMENT: 36 INCHES OR LESS, ONE LABEL APPROXIMATELY CENTERED, LONGER THAN 36 INCHES, TWO LABELS APPROXIMATELY 6 INCHES FROM EACH CONNECTOR.
2. CABLE ASSEMBLY SHALL BE TESTED FOR CONTINUITY.
3. CABLE ASSEMBLY LENGTH DETERMINED BY ITEM PN AND DESCRIPTION.

THE INFORMATION CONTAINED IN THIS DRAWING IS THE SOLE PROPERTY OF INFINITE ELECTRONICS, INC. ANY REPRODUCTION IN PART OR WHOLE WITHOUT THE WRITTEN PERMISSION OF INFINITE ELECTRONICS, INC. IS PROHIBITED. THESE COMMODITIES, TECHNOLOGY OR SERVICES ARE EXPORTED FROM THE UNITED STATES IN ACCORDANCE WITH THE EXPORT ADMINISTRATION REGULATIONS. DIVERSION CONTRARY TO U.S. LAW PROHIBITED.

 <b>PASTERNAK</b> an INFINITE brand	Website: <a href="http://www.Pasternack.com">www.Pasternack.com</a> Phone: 1.866.727.8376   1.949.261.1920	INTERPRET ALL DIMENSIONS AND TOLERANCES PER ASME Y14.5 SCALE: NONE SHEET: 1 OF 1
	DESCRIPTION: N FEMALE TO N MALE LOW LOSS CABLE USING LMR-LW600 COAX	
SIZE: A	CAGE CODE: 53919	DRAWN BY: DMAY
ITEM NO.: PE3W19217		REV: A