



MMCX Plug Right Angle Connector Solder Attachment for PE-SR405AL, PE-SR405FL, PE-SR405FLJ, PE-SR405TN, RG405

RF Connectors Technical Data Sheet

PE44699

Configuration

- MMCX Plug Connector
- 50 Ohms
- Right Angle Body Geometry
- Connector Interface Types: PE-SR405AL, PE-SR-405FL, PE-SR405FLJ, PE-SR405TN, RG405

Features

- Max. Operating Frequency 6 GHz
- Gold over Nickel Plated Phosphor Bronze Contact

Applications

- General Purpose Test
- Custom Cable Assemblies

Description

Pasternack's PE44699 MMCX plug right angle connector with solder/solder attachment for PE-SR405AL, PE-SR405FL, PE-SR405FLJ, PE-SR405TN and RG405 is part of our full line of RF components available for same-day shipping. Our MMCX plug connector operates up to a maximum frequency of 6 GHz. Its right angle body geometry allows for easier connections in tight spaces.

Our MMCX plug right angle connector PE44699 datasheet specifications and drawing with dimensions are shown below in this PDF. Pasternack's broad catalog of RF, microwave and millimeter wave connectors allows designers to configure and customize their signal connections however they like. Whether the need is to provide an I/O for a board design, or simply create a custom cable assembly configuration, Pasternack has the right connector for the job. Pasternack can also expertly build your custom cable assemblies for you and ship same-day.

Electrical Specifications

Description	Minimum	Typical	Maximum	Units
Frequency Range	DC		6	GHz
VSWR		1.2:1		

Mechanical Specifications

Size	
Length	0.315 in [8 mm]
Width/Dia.	0.157 in [3.99 mm]
Height	0.315 in [8 mm]
Weight	0.004 lbs [1.81 g]

Click the following link (or enter part number in "SEARCH" on website) to obtain additional part information including price, inventory and certifications: [MMCX Plug Right Angle Connector Solder Attachment for PE-SR405AL, PE-SR405FL, PE-SR405FLJ, PE-SR405TN, RG405 PE44699](#)



MMCX Plug Right Angle Connector Solder Attachment for PE-SR405AL, PE-SR405FL, PE-SR405FLJ, PE-SR405TN, RG405

RF Connectors Technical Data Sheet

PE44699

Material Specifications

Description	Material	Plating
Contact	Phosphor Bronze	Gold over Nickel
Insulation	PTFE	
Body	Brass	Gold over Nickel

Environmental Specifications

Compliance Certifications (see [product page](#) for current document)

Plotted and Other Data

Notes:

MMCX Plug Right Angle Connector Solder Attachment for PE-SR405AL, PE-SR405FL, PE-SR405FLJ, PE-SR405TN, RG405 from Pasternack Enterprises has same day shipment for domestic and International orders. Our RF, microwave and millimeter wave products maintain a 99.4% availability and are part of the broadest selection in the industry.

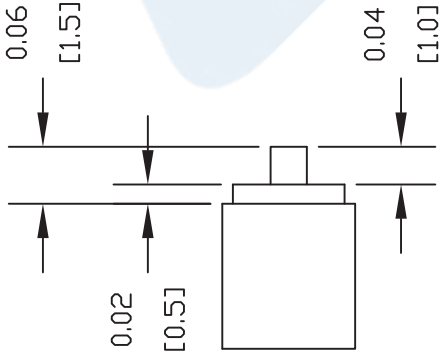
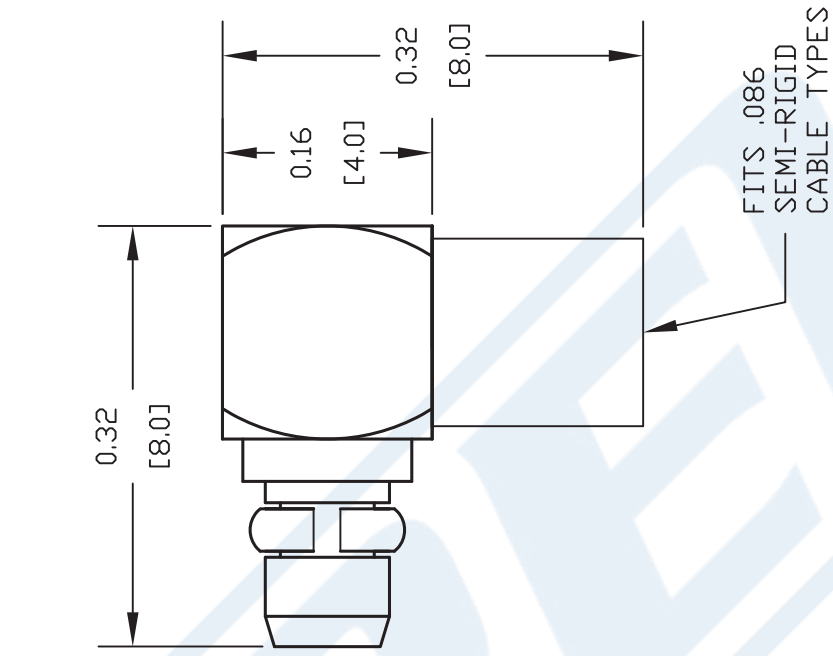
Click the following link (or enter part number in "SEARCH" on website) to obtain additional part information including price, inventory and certifications: [MMCX Plug Right Angle Connector Solder Attachment for PE-SR405AL, PE-SR405FL, PE-SR405FLJ, PE-SR405TN, RG405 PE44699](#)

URL: <https://www.pasternack.com/mmcx-plug-standard-pe-sr405al-pe-sr405fl-pe-sr405flj-rg405-connector-pe44699-p.aspx>

The information contained in this document is accurate to the best of our knowledge and representative of the part described herein. It may be necessary to make modifications to the part and/or the documentation of the part, in order to implement improvements. Pasternack reserves the right to make such changes as required. Unless otherwise stated, all specifications are nominal. Pasternack does not make any representation or warranty regarding the suitability of the part described herein for any particular purpose, and Pasternack does not assume any liability arising out of the use of any part or documentation.

PE44699 CAD Drawing

MMCX Plug Right Angle Connector Solder Attachment for PE-SR405AL, PE-SR405FL, PE-SR405FLJ, PE-SR405TN, RG405



STRIPPING DIMENSIONS

ASSEMBLY PROCEDURES

1. STRIP CABLE AS SHOWN & TIN CENTER CONDUCTOR.
2. INSERT CABLE INTO BODY UNTIL OUTER CONDUCTOR BOTTOMS OUT. THE CENTER CONDUCTOR WILL PROTRUDE INTO CONTACT SLOT.
3. SOLDER CENTER CONDUCTOR INTO SLOT AND OUTER CONDUCTOR TO BODY. INSERT INSULATOR AND PRESS CAP INTO CONNECTOR BODY.

NOTES:
1. UNLESS OTHERWISE SPECIFIED ALL DIMENSIONS ARE NOMINAL.
2. ALL SPECIFICATIONS ARE SUBJECT TO CHANGE WITHOUT NOTICE AT ANY TIME.
3. DIMENSIONS ARE IN INCHES [mm].
4. FITS MIL-C-17 AND EQUIVALENT CABLES.

DWG TITLE
PE44699



PASTERNAK ENTERPRISES, INC.
P.O. BOX 16759, IRVINE, CA 92623
PHONE (949) 261-1920 FAX (949) 261-7451
WEB ADDRESS: www.pasternack.com
E-MAIL ADDRESS: sales@pasternack.com
COAXIAL & FIBER OPTICS
ESTABLISHED 1972

REV. -	FSCM NO. 53919	CAD FILE 062611	SCALE N/A	SIZE A	2231
--------	----------------	-----------------	-----------	--------	------



RP SMA Female Bulkhead Mount Connector Solder Attachment for PE-SR405AL, PE-SR405FL, PE-SR405FLJ, PE-SR405TN, RG405, .235 inch D Hole

RF Connectors Technical Data Sheet

PE4865

Configuration

- SMA Female Reverse Polarity Connector
- 50 Ohms
- Straight Body Geometry
- PE-SR405AL, PE-SR405FL, PE-SR405FLJ, PE-SR405TN, RG405 Interface Type
- Solder/Solder Attachment
- Bulkhead

Features

- Max. Operating Frequency 18 GHz
- Gold over Nickel Plated Brass Contact
- Reverse Polarity

Applications

- General Purpose Test
- Rack and Panel Mount Applications
- Custom Cable Assemblies

Description

Pasternack's PE4865 RP SMA female bulkhead connector with solder/solder attachment for PE-SR405AL, PE-SR405FL, PE-SR405FLJ, PE-SR405TN and RG405 (.235 inch D hole) is part of our full line of RF components available for same-day shipping. The female reverse polarity configuration uses a female connector body with a male inner contact pin. Our SMA female connector operates up to a maximum frequency of 18 GHz. This SMA bulkhead connector allows designers to create external connections on their product enclosures, and can be used in a variety of other rack mount and panel mount applications.

Our reverse polarity SMA female bulkhead connector PE4865 datasheet specifications and drawing with dimensions are shown below in this PDF. Pasternack's broad catalog of RF, microwave and millimeter wave connectors allows designers to configure and customize their signal connections however they like. Whether the need is to provide an I/O for a board design, or simply create a custom cable assembly configuration, Pasternack has the right connector for the job. Pasternack can also expertly build your custom cable assemblies for you and ship same-day.

Electrical Specifications

Description	Minimum	Typical	Maximum	Units
Frequency Range	DC		18	GHz

Mechanical Specifications

Size

Length	0.63 in [16 mm]
Width/Dia.	0.438 in [11.13 mm]
Weight	0.006 lbs [2.72 g]

Click the following link (or enter part number in "SEARCH" on website) to obtain additional part information including price, inventory and certifications: [RP SMA Female Bulkhead Mount Connector Solder Attachment for PE-SR405AL, PE-SR405FL, PE-SR405FLJ, PE-SR405TN, RG405, .235 inch D Hole PE4865](#)



RP SMA Female Bulkhead Mount Connector Solder Attachment for PE-SR405AL, PE-SR405FL, PE-SR405FLJ, PE-SR405TN, RG405, .235 inch D Hole

RF Connectors Technical Data Sheet

PE4865

Material Specifications

Description	Material	Plating
Contact	Brass	Gold over Nickel
Insulation	PTFE	
Body	Stainless Steel	Gold over Nickel

Compliance Certifications (see [product page](#) for current document)

Plotted and Other Data

Notes:

RP SMA Female Bulkhead Mount Connector Solder Attachment for PE-SR405AL, PE-SR405FL, PE-SR405FLJ, PE-SR405TN, RG405, .235 inch D Hole from Pasternack Enterprises has same day shipment for domestic and International orders. Our RF, microwave and millimeter wave products maintain a 99% availability and are part of the broadest selection in the industry.

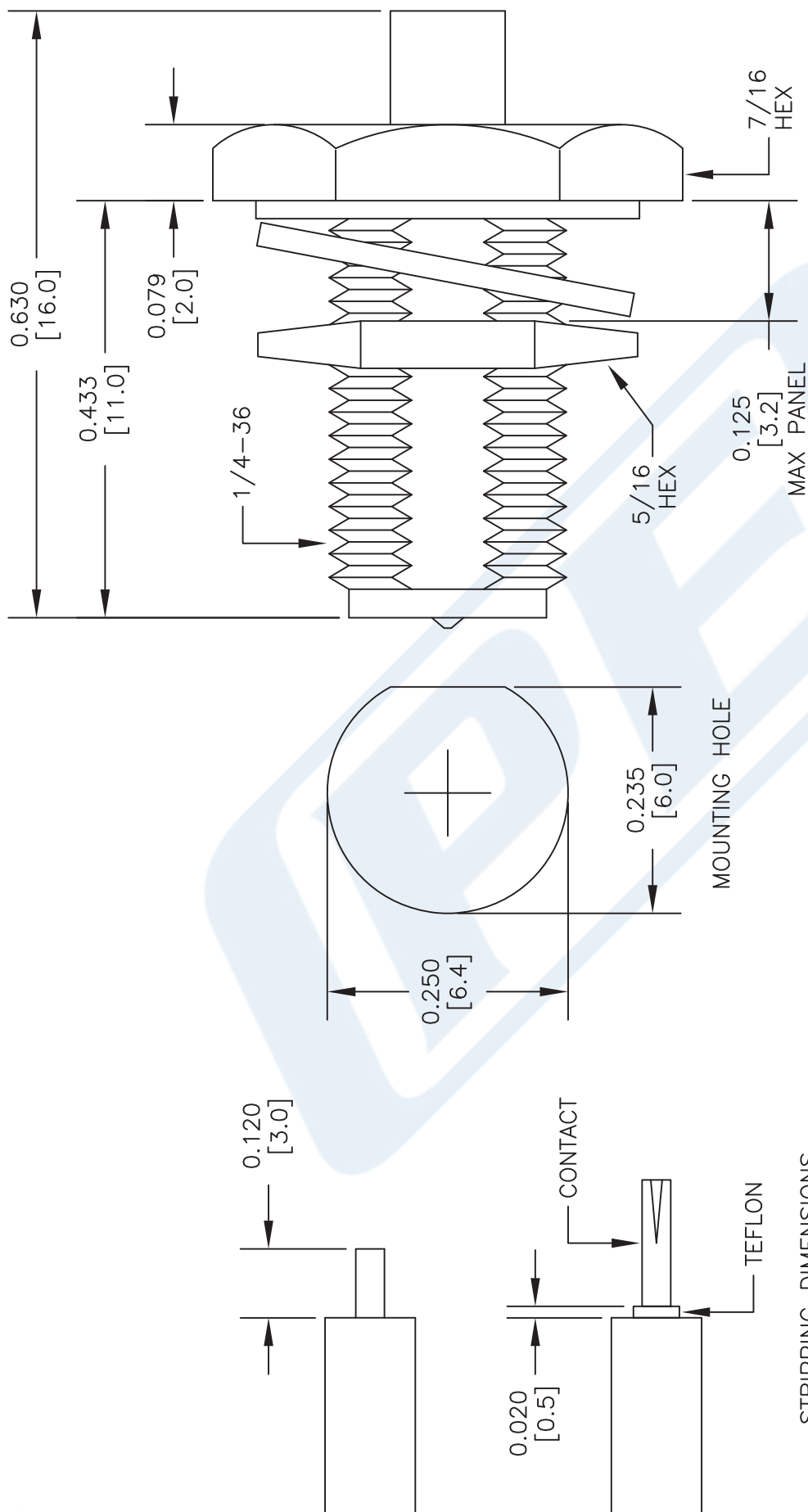
Click the following link (or enter part number in "SEARCH" on website) to obtain additional part information including price, inventory and certifications: [RP SMA Female Bulkhead Mount Connector Solder Attachment for PE-SR405AL, PE-SR405FL, PE-SR405FLJ, PE-SR405TN, RG405, .235 inch D Hole PE4865](#)

URL: <https://www.pasternack.com/sma-female-reverse-polarity-pe-sr405al-pe-sr405fl-rg405-connector-pe4865-p.aspx>

The information contained in this document is accurate to the best of our knowledge and representative of the part described herein. It may be necessary to make modifications to the part and/or the documentation of the part, in order to implement improvements. Pasternack reserves the right to make such changes as required. Unless otherwise stated, all specifications are nominal. Pasternack does not make any representation or warranty regarding the suitability of the part described herein for any particular purpose, and Pasternack does not assume any liability arising out of the use of any part or documentation.

RP SMA Female Bulkhead Mount Connector Solder Attachment for PE-SR405AL,
PE-SR405FL, PE-SR405FLJ, PE-SR405TN, RG405, .235 inch D Hole

RP SMA Female Bulkhead Mount Connector Solder Attachment for PE-SR405AL,
PE-SR405FL, PE-SR405FLJ, PE-SR405TN, RG405, .235 inch D Hole

STRIPPING DIMENSIONS
ASSEMBLY PROCEDURES

1. STRIP CABLE AS SHOWN & TIN CENTER CONDUCTOR.
2. INSTALL TEFLON SPACER AS SHOWN AND SOLDER CONTACT TO CENTER CONDUCTOR.
3. INSERT CABLE INTO BODY UNTIL OUTER CONDUCTOR BOTTOMS OUT. SOLDER OUTER CONDUCTOR TO BODY.

DWG TITLE

PE4865

NOTES:

1. UNLESS OTHERWISE SPECIFIED ALL DIMENSIONS ARE NOMINAL.
2. ALL SPECIFICATIONS ARE SUBJECT TO CHANGE WITHOUT NOTICE AT ANY TIME.
3. DIMENSIONS ARE IN INCHES [mm].
4. FITS MIL-C-17 AND EQUIVALENT CABLES.

FSCM NO. 53919

CAD FILE 111813

SCALE N/A

SIZE A

2233

RG405 Tinned Coax Cable with Tinned Copper Outer Conductor in Coiled Sections



PE-SR405TN

Configuration

- Semi-Rigid Cable
- MIL-C-17
- 1 Shield(s)

Features

- Cable Packaged in Coiled Sections

Applications

- General Purpose Test

Description

PE-SR405TN part number from Pasternack is a RG405 Tinned coax cable that is semi-rigid. Pasternack RG405 Tinned semi-rigid coax cable is 50 Ohm and has a PTFE dielectric. RG405 Tinned coax has a shield count of 1 and the maximum frequency for this Pasternack cable is 40 GHz. RG405 Tinned coax cable has an attenuation at 1 GHz of 22 dB.

Pasternack RG405 Tinned coax cables are part of over 40,000 RF, microwave and millimeter wave components. RG405 Tinned cables and our other RF parts are available for same day shipping worldwide. Custom RF cable assemblies using RG405 Tinned or other coax can be built and shipped same day as well.

Electrical Specifications

Description	Minimum	Typical	Maximum	Units
Frequency Range	DC		40	GHz
Impedance		50		Ohms

Performance by Frequency Band

Description	F1	F2	F3	F4	F5	Units
Frequency	1	10	20			GHz
Attenuation, Typ	22	80	120			dB/100ft
	72.18	262.47	393.7			dB/100m
Input Power (CW), Max	130	35	20			Watts

Mechanical Specifications

Weight	0.013 lbs/ft [0.02 kg/m]
Min. Bend Radius (Installation)	0.05 in [1.27 mm]

Construction Specifications

Description	Material and Plating	Diameter
Inner Conductor	Copper Clad Steel, Silver, 1 Strand	0.02 in [0.51 mm]
Conductor Type	Solid	

RG405 Tinned Coax Cable with Tinned Copper Outer Conductor in Coiled Sections



PE-SR405TN

Construction Specifications

Description	Material and Plating	Diameter
Dielectric	PTFE	0.066 in [1.68 mm]
Outer Conductor	Tinned Copper	0.086 in [2.18 mm]

Environmental Specifications

Temperature

Operating Range -55 to +125 deg C

Compliance Certifications (see [product page](#) for current document)

Plotted and Other Data

Notes:

RG405 Tinned Coax Cable with Tinned Copper Outer Conductor in Coiled Sections from Pasternack Enterprises has same day shipment for domestic and International orders. Our RF, microwave and millimeter wave products maintain a 99.4% availability and are part of the broadest selection in the industry.

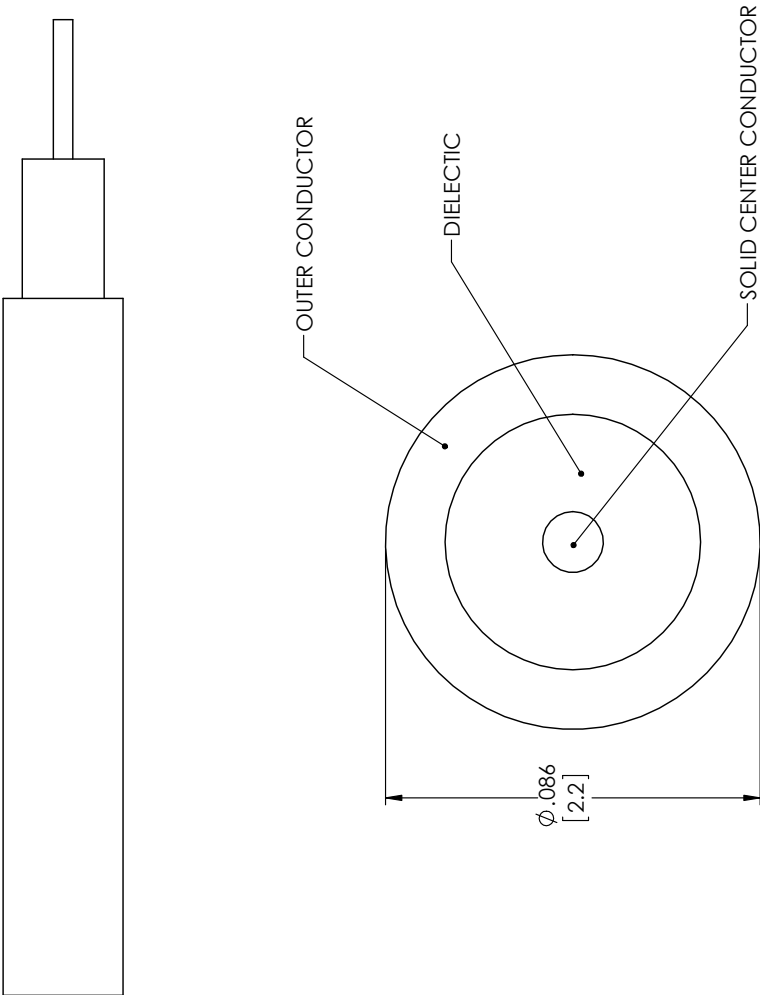
Click the following link (or enter part number in "SEARCH" on website) to obtain additional part information including price, inventory and certifications: [RG405 Tinned Coax Cable with Tinned Copper Outer Conductor in Coiled Sections PE-SR405TN](#)

URL: <https://www.pasternack.com/50-ohm-semi-rigid-rg405-tinned-tinned-copper-pe-sr405tn-p.aspx>

The information contained within this document is accurate to the best of our knowledge and representative of the part described herein. It may be necessary to make modifications to the part and/or the documentation of the part in order to implement improvements. Pasternack Enterprises reserves the right to make such changes as required. Unless otherwise stated, all specifications are nominal. Pasternack Enterprises does not make any representation or warranty regarding the suitability of the part described herein for any particular purpose, and Pasternack Enterprises does not assume liability arising out of the use of any part or document.

RG405 Tinned Coax Cable with Tinned Copper Outer Conductor in Coiled Sections

RG405 Tinned Coax Cable with Tinned Copper Outer Conductor in Coiled Sections



STANDARD TOLERANCES
.X ±0.2
.XX ±0.01
.XXX ±0.005

****STANDARD TOLERANCES APPLY
ONLY TO DIMENSIONS IN INCHES**

<div><div><div><div><div><div></div></div></div><div><div><div></div><div></div></div></div><div><div><div></div><div></div></div></div><div><div><div></div><div></div></div></div><div><div><div></div></div></div></div></div><div><div>P</div><div>E</div></div><div><div><div></div><div></div></div></div><div><div><div></div><div></div></div></div><div><div><div></div><div></div></div></div><div><div><div></div><div></div></div></div><div><div><div></div><div></div></div></div><div><div><div></div><div></div></div></div><div><div><div></div><div></div></div></div><div><div><div></div><div></div></div></div><div><div><div></div><div></div></div></div><div><div><div></div><div></div></div></div><div><div><div></div><div></div></div></div><div><div><div></div><div></div></div></div><div><div><div></div><div></div></div></div><div><div><div></div><div></div></div></div><div><div><div></div><div></div></div></div><div><div><div></div><div></div></div></div><div><div><div></div><div></div></div></div><div><div><div></div><div></div></div></div><div><div><div></div><div></div></div></div><div><div><div></div><div></div></div></div><div><div><div></div><div></div></div></div><div><div><div></div><div></div></div></div><div><div><div></div><div></div></div></div><div><div><div></div><div></div></div></div><div><div><div></div><div></div></div></div><div><div><div></div><div></div></div></div><div><div><div></div><div></div></div></div><div><div><div></div><div></div></div></div><div><div><div></div><div></div></div></div><div><div><div></div><div></div></div></div><div><div><div></div><div></div></div></div><div><div><div></div><div></div></div></div><div><div><div></div><div></div></div></div><div><div><div></div><div></div></div></div><div><div><div></div><div></div></div></div><div><div><div></div><div></div></div></div><div><div><div></div><div></div></div></div><div><div><div></div><div></div></div></div><div><div><div></div><div></div></div></div><div><div><div></div><div></div></div></div><div><div><div></div><div></div></div></div><div><div><div></div><div></div></div></div><div><div><div></div><div></div></div></div><div><div><div></div><div></div></div></div><div><div><div></div><div></div></div></div><div><div><div></div><div></div></div></div><div><div><div></div><div></div></div></div><div><div><div></div><div></div></div></div><div><div><div></div><div></div></div></div><div><div><div></div><div></div></div></div><div><div><div></div><div></div></div></div><div><div><div></div><div></div></div></div><div><div><div></div><div></div></div></div><div><div><div></div><div></div></div></div><div><div><div></div><div></div></div></div><div><div><div></div><div></div></div></div><div><div><div></div><div></div></div></div><div><div><div></div><div></div></div></div><div><div><div></div><div></div></div></div><div><div><div></div><div></div></div></div><div><div><div></div><div></div></div></div><div><div><div></div><div></div></div></div><div><div><div></div><div></div></div></div><div><div><div></div><div></div></div></div><div><div><div></div><div></div></div></div><div><div><div></div><div></div></div></div><div><div><div></div><div></div></div></div><div><div><div></div><div></div></div></div><div><div><div></div><div></div></div></div><div><div><div></div><div></div></div></div><div><div><div></div><div></div></div></div><div><div><div></div><div></div></div></div><div><div><div></div><div></div></div></div><div><div><div></div><div></div></div></div><div><div><div></div><div></div></div></div><div><div><div></div><div></div></div></div><div><div><div></div><div></div></div></div><div><div><div></div><div></div></div></div><div><div><div></div><div></div></div></div><div><div><div></div><div></div></div></div><div><div><div></div><div></div></div></div><div><div><div></div><div></div></div></div><div><div><div></div><div></div></div></div><div><div><div></div><div></div></div></div><div><div><div></div><div></div></div></div><div><div><div></div><div></div></div></div><div><div><div></div><div></div></div></div><div><div><div></div><div></div></div></div><div><div><div></div><div></div></div></div><div><div><div></div><div></div></div></div><div><div><div></div><div></div></div></div><div><div><div></div><div></div></div></div><div><div><div></div><div></div></div></div><div><div><div></div><div></div></div></div><div><div><div></div><div></div></div></div><div><div><div></div><div></div></div></div><div><div><div></div><div></div></div></div><div><div><div></div><div></div></div></div><div><div><div></div><div></div></div></div><div><div><div></div><div></div></div></div><div><div><div></div><div></div></div></div><div><div><div></div><div></div></div></div><div><div><div></div><div></div></div></div><div><div><div></div><div></div></div></div><div><div><div></div><div></div></div></div><div><div><div></div><div></div></div></div><div><div><div></div><div></div></div></div><div><div><div></div><div></div></div></div><div><div><div></div><div></div></div></div><div><div><div></div><div></div></div></div><div><div><div></div><div></div></div></div><div><div><div></div><div></div></div></div><div><div><div></div><div></div></div></div><div><div><div></div><div></div></div></div><div><div><div></div><div></div></div></div><div><div><div></div><div></div></div></div><div><div><div></div><div></div></div></div><div><div><div></div><div></div></div></div><div><div><div></div><div></div></div></div><div><div><div></div><div></div></div></div><div><div><div></div><div></div></div></div><div><div><div></div><div></div></div></div><div><div><div></div><div></div></div></div><div><div><div></div><div></div></div></div><div><div><div></div><div></div></div></div><div><div><div></div><div></div></div></div><div><div><div></div><div></div></div></div><div><div><div></div><div></div></div></div><div><div><div></div><div></div></div></div><div><div><div></div><div></div></div></div><div><div><div></div><div></div></div></div><div><div><div></div><div></div></div></div><div><div><div></div><div></div></div></div><div><div><div></div><div></div></div></div><div><div><div></div><div></div></div></div><div><div><div></div><div></div></div></div><div><div><div></div><div></div></div></div><div><div><div></div><div></div></div></div><div><div><div></div><div></div></div></div><div><div><div></div><div></div></div></div><div><div><div></div><div></div></div></div><div><div><div></div><div></div></div></div><div><div><div></div><div></div></div></div><div><div><div></div><div></div></div></div><div><div><div></div><div></div></div></div><div><div><div></div><div></div></div></div><div><div><div></div><div></div></div></div><div><div><div></div><div></div></div></div><div><div><div></div><div></div></div></div><div><div><div></div><div></div></div></div><div><div><div></div><div></div></div></div><div><div><div></div><div></div></div></div><div><div><div></div><div></div></div></div><div><div><div></div><div></div></div></div><div><div><div></div><div></div></div></div><div><div><div></div><div></div></div></div><div><div><div></div><div></div></div></div><div><div><div></div><div></div></div></div><div><div><div></div><div></div></div></div><div><div><div></div><div></div></div></div><div><div><div></div><div></div></div></div><div><div><div></div><div></div></div></div><div><div><div></div><div></div></div></div><div><div><div></div><div></div></div></div><div><div><div></div><div></div></div></div><div><div><div></div><div></div></div></div><div><div><div></div><div></div></div></div><div><div><div></div><div></div></div></div><div><div><div></div><div></div></div></div><div><div><div></div><div></div></div></div><div><div><div></div><div></div></div></div><div><div><div></div><div></div></div></div><div><div><div></div><div></div></div></div><div><div><div></div><div></div></div></div><div><div><div></div><div></div></div></div><div><div><div></div><div></div></div></div><div><div><div></div><div></div></div></div><div><div><div></div><div></div></div></div><div><div><div></div><div></div></div></div><div><div><div></div><div></div></div></div><div><div><div></div><div></div></div></div><div><div><div></div><div></div></div></div><div><div><div></div><div></div></div></div><div><div><div></div><div></div></div></div><div><div><div></div><div></div></div></div><div><div><div></div><div></div></div></div><div><div><div></div><div></div></div></div><div><div><div></div><div></div></div></div><div><div><div></div><div></</div></div></div></div>
--