



SSMC Jack Connector Clamp/Solder Attachment for PE-047SR, PE-SR047AL, PE-SR047FL

RF Connectors Technical Data Sheet

PE45371

Configuration

- SSMC Jack Connector
- 50 Ohms
- Straight Body Geometry
- PE-047SR, PE-SR047AL, PE-SR047FL Interface Type
- Clamp/Solder Attachment

Features

- Max. Operating Frequency 12.4 GHz
- Gold Plated Beryllium Copper Contact
- Contact plating according to MIL-G-45204
- Reliable threaded coupling
- Small SSMC connector form factor (50% smaller than SMA, radially)
- IEC 60169-20 SSMC connector interface
- In stock and ready to ship

Applications

- General Purpose Test
- Custom Cable Assemblies
- Avionics
- A/D Modules
- Data Acquisition
- Software defined radio (SDR)
- RADAR/SONAR
- Ultra Wideband Digital Receivers
- Medical equipment

Description

Pasternack's PE45371 SSMC jack connector with clamp/solder attachment for PE-047SR, PE-SR047AL and PE-SR047FL is part of our full line of RF components available for same-day shipping. Our SSMC jack connector operates up to a maximum frequency of 12.4 GHz.

Our SSMC jack connector PE45371 datasheet specifications and drawing with dimensions are shown below in this PDF. Pasternack's broad catalog of RF, microwave and millimeter wave connectors allows designers to configure and customize their signal connections however they like. Whether the need is to provide an I/O for a board design, or simply create a custom cable assembly configuration, Pasternack has the right connector for the job. Pasternack can also expertly build your custom cable assemblies for you and ship same-day.

Electrical Specifications

Description	Minimum	Typical	Maximum	Units
Frequency Range	DC		12.4	GHz
Insertion Loss			0.3	dB
Operating Voltage (AC)			250	Vrms
High Potential Voltage 5 MHz			400	Vrms
Inner Conductor DC Resistance			4	mOhms
Outer Conductor DC Resistance			1	mOhms
Insulation Resistance	1,000			MOhms
RF Leakage	-50			dB

Click the following link (or enter part number in "SEARCH" on website) to obtain additional part information including price, inventory and certifications: [SSMC Jack Connector Clamp/Solder Attachment for PE-047SR, PE-SR047AL, PE-SR047FL PE45371](#)



SSMC Jack Connector Clamp/Solder Attachment
for PE-047SR, PE-SR047AL, PE-SR047FL

RF Connectors Technical Data Sheet

PE45371

Mechanical Specifications

Size

Length 0.55 in [13.97 mm]

Width/Dia. 0.156 in [3.96 mm]

Mating Cycles 500 Cycles

Mating Torque 1.75 to 2 in-lbs [0.20 to 0.23 Nm]

Material Specifications

Description	Material	Plating
Contact	Beryllium Copper	Gold MIL-G-45204
Insulation	Teflon	
Outer Conductor	Beryllium Copper	Gold MIL-G-45204
Body	Beryllium Copper	Gold MIL-G-45204
Washer	Phosphor Bronze	Gold MIL-G-45204

Environmental Specifications

Temperature

Operating Range -65 to +165 deg C

Shock Method 213, Condition B, 75G @6ms @1/2 sine

Vibration Method 204, Condition D (20G)

Salt Spray Method 101, Condition B, 5% salt solution

Compliance Certifications (see [product page](#) for current document)

Plotted and Other Data

Notes:

Click the following link (or enter part number in "SEARCH" on website) to obtain additional part information including price, inventory and certifications: [SSMC Jack Connector Clamp/Solder Attachment for PE-047SR, PE-SR047AL, PE-SR047FL PE45371](#)



SSMC Jack Connector Clamp/Solder Attachment
for PE-047SR, PE-SR047AL, PE-SR047FL

RF Connectors Technical Data Sheet

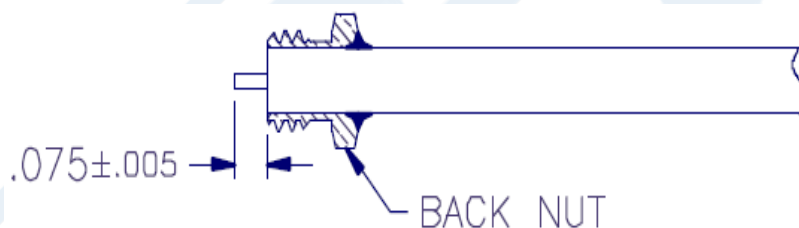
PE45371

Assembly Instruction

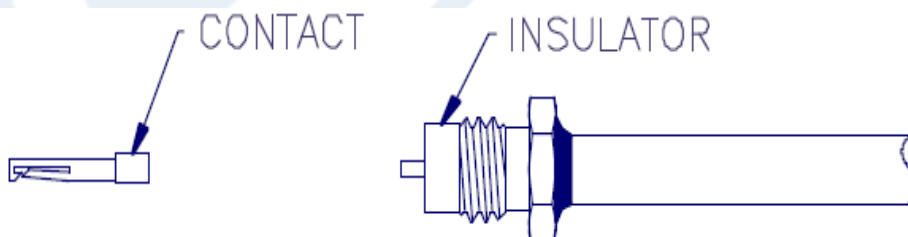
Assembly Instructions



1. TRIM CABLE JACKET ONLY, AS SHOWN ABOVE.



2. SLIDE BACK NUT ONTO CABLE UNTIL TRIMMED END OF JACKET IS FLUSH WITH FRONT OF NUT. SOLDER NUT TO CABLE.
3. TRIM DIELECTRIC AS SHOWN.



4. INSTALL INSULATOR OVER CABLE CENTER CONDUCTOR.
5. SOLDER CONTACT TO CENTER CONDUCTOR.
6. INSERT CABLE ASSEMBLY INTO CONNECTOR BODY AND TIGHTEN TO 35-45 INCH-OUNCES TORQUE.

Click the following link (or enter part number in "SEARCH" on website) to obtain additional part information including price, inventory and certifications: [SSMC Jack Connector Clamp/Solder Attachment for PE-047SR, PE-SR047AL, PE-SR047FL PE45371](#)



SSMC Jack Connector Clamp/Solder Attachment for PE-047SR, PE-SR047AL, PE-SR047FL

RF Connectors Technical Data Sheet

PE45371

SSMC Jack Connector Clamp/Solder Attachment for PE-047SR, PE-SR047AL, PE-SR047FL from Pasternack Enterprises has same day shipment for domestic and International orders. Our RF, microwave and millimeter wave products maintain a 99.4% availability and are part of the broadest selection in the industry.

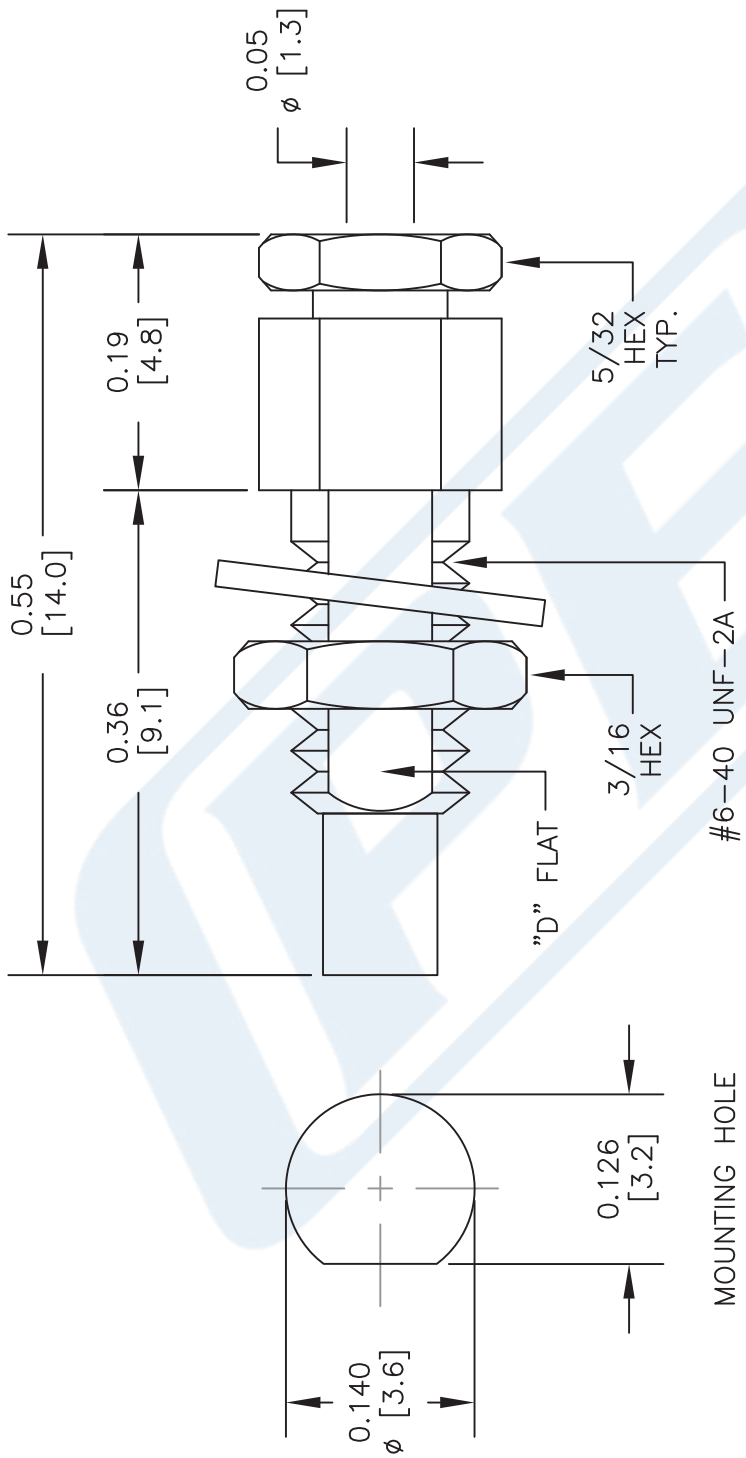
Click the following link (or enter part number in "SEARCH" on website) to obtain additional part information including price, inventory and certifications: [SSMC Jack Connector Clamp/Solder Attachment for PE-047SR, PE-SR047AL, PE-SR047FL PE45371](https://www.pasternack.com/ssmc-jack-pe-047sr-pe-sr047al-pe-sr047fl-connector-pe45371-p.aspx)

URL: <https://www.pasternack.com/ssmc-jack-pe-047sr-pe-sr047al-pe-sr047fl-connector-pe45371-p.aspx>

The information contained in this document is accurate to the best of our knowledge and representative of the part described herein. It may be necessary to make modifications to the part and/or the documentation of the part, in order to implement improvements. Pasternack reserves the right to make such changes as required. Unless otherwise stated, all specifications are nominal. Pasternack does not make any representation or warranty regarding the suitability of the part described herein for any particular purpose, and Pasternack does not assume any liability arising out of the use of any part or documentation.

PE45371 CAD Drawing

SSMC Jack Connector Clamp/Solder Attachment for PE-047SR, PE-SR047AL, PE-SR047FL



STANDARD TOLERANCES	
.X	±0.2
.XX	±0.1
.XXX	±0.05

*STANDARD TOLERANCES APPLY ONLY TO DIMENSIONS IN INCHES

<div><div><div><div><div></div><div></div><div></div></div><div><div></div><div></div><div></div></div></div><div><div><div><div></div><div></div><div></div></div><div><div></div><div></div><div></div></div></div><div><div><div><div></div><div></div><div></div></div><div><div></div><div></div><div></div></div></div></div><div><div><div><div></div><div></div><div></div></div><div><div></div><div></div><div></div></div></div><div><div><div><div></div><div></div><div></div></div><div><div></div><div></div><div></div></div></div></div><div><div><div><div></div><div></div><div></div></div><div><div></div><div></div><div></div></div></div></div></div><div><div><div><div></div><div></div><div></div></div><div><div></div><div></div><div></div></div></div><div><div><div><div></div><div></div><div></div></div><div><div></div><div></div><div></div></div></div></div></div><div><div><div><div></div><div></div><div></div></div><div><div></div><div></div><div></div></div></div><div><div><div><div></div><div></div><div></div></div><div><div></div><div></div><div></div></div></div></div></div><div><div><div><div></div><div></div><div></div></div><div><div></div><div></div><div></div></div></div><div><div><div><div></div><div></div><div></div></div><div><div></div><div></div><div></div></div></div></div></div><div><div><div><div></div><div></div><div></div></div><div><div></div><div></div><div></div></div></div><div><div><div><div></div><div></div><div></div></div><div><div></div><div></div><div></div></div></div></div></div><div><div><div><div></div><div></div><div></div></div><div><div></div><div></div><div></div></div></div><div><div><div><div></div><div></div><div></div></div><div><div></div><div></div><div></div></div></div></div></div><div><div><div><div></div><div></div><div></div></div><div><div></div><div></div><div></div></div></div><div><div><div><div></div><div></div><div></div></div><div><div></div><div></div><div></div></div></div></div></div><div><div><div><div></div><div></div><div></div></div><div><div></div><div></div><div></div></div></div><div><div><div><div></div><div></div><div></div></div><div><div></div><div></div><div></div></div></div></div></div><div><div><div><div></div><div></div><div></div></div><div><div></div><div></div><div></div></div></div><div><div><div><div></div><div></div><div></div></div><div><div></div><div></div><div></div></div></div></div></div><div><div><div><div></div><div></div><div></div></div><div><div></div><div></div><div></div></div></div><div><div><div><div></div><div></div><div></div></div><div><div></div><div></div><div></div></div></div></div></div><div><div><div><div></div><div></div><div></div></div><div><div></div><div></div><div></div></div></div><div><div><div><div></div><div></div><div></div></div><div><div></div><div></div><div></div></div></div></div></div><div><div><div><div></div><div></div><div></div></div><div><div></div><div></div><div></div></div></div><div><div><div><div></div><div></div><div></div></div><div><div></div><div></div><div></div></div></div></div></div><div><div><div><div></div><div></div><div></div></div><div><div></div><div></div><div></div></div></div><div><div><div><div></div><div></div><div></div></div><div><div></div><div></div><div></div></div></div></div></div><div><div><div><div></div><div></div><div></div></div><div><div></div><div></div><div></div></div></div><div><div><div><div></div><div></div><div></div></div><div><div></div><div></div><div></div></div></div></div></div><div><div><div><div></div><div></div><div></div></div><div><div></div><div></div><div></div></div></div><div><div><div><div></div><div></div><div></div></div><div><div></div><div></div><div></div></div></div></div></div><div><div><div><div></div><div></div><div></div></div><div><div></div><div></div><div></div></div></div><div><div><div><div></div><div></div><div></div></div><div><div></div><div></div><div></div></div></div></div></div><div><div><div><div></div><div></div><div></div></div><div><div></div><div></div><div></div></div></div><div><div><div><div></div><div></div><div></div></div><div><div></div><div></div><div></div></div></div></div></div><div><div><div><div></div><div></div><div></div></div><div><div></div><div></div><div></div></div></div><div><div><div><div></div><div></div><div></div></div><div><div></div><div></div><div></div></div></div></div></div><div><div><div><div></div><div></div><div></div></div><div><div></div><div></div><div></div></div></div><div><div><div><div></div><div></div><div></div></div><div><div></div><div></div><div></div></div></div></div></div><div><div><div><div></div><div></div><div></div></div><div><div></div><div></div><div></div></div></div><div><div><div><div></div><div></div><div></div></div><div><div></div><div></div><div></div></div></div></div></div><div><div><div><div></div><div></div><div></div></div><div><div></div><div></div><div></div></div></div><div><div><div><div></div><div></div><div></div></div><div><div></div><div></div><div></div></div></div></div></div><div><div><div><div></div><div></div><div></div></div><div><div></div><div></div><div></div></div></div><div><div><div><div></div><div></div><div></div></div><div><div></div><div></div><div></div></div></div></div></div><div><div><div><div></div><div></div><div></div></div><div><div></div><div></div><div></div></div></div><div><div><div><div></div><div></div><div></div></div><div><div></div><div></div><div></div></div></div></div></div><div><div><div><div></div><div></div><div></div></div><div><div></div><div></div><div></div></div></div><div><div><div><div></div><div></div><div></div></div><div><div></div><div></div><div></div></div></div></div></div><div><div><div><div></div><div></div><div></div></div><div><div></div><div></div><div></div></div></div><div><div><div><div></div><div></div><div></div></div><div><div></div><div></div><div></div></div></div></div></div><div><div><div><div></div><div></div><div></div></div><div><div></div><div></div><div></div></div></div><div><div><div><div></div><div></div><div></div></div><div><div></div><div></div><div></div></div></div></div></div><div><div><div><div></div><div></div><div></div></div><div><div></div><div></div><div></div></div></div><div><div><div><div></div><div></div><div></div></div><div><div></div><div></div><div></div></div></div></div></div><div><div><div><div></div><div></div><div></div></div><div><div></div><div></div><div></div></div></div><div><div><div><div></div><div></div><div></div></div><div><div></div><div></div><div></div></div></div></div></div><div><div><div><div></div><div></div><div></div></div><div><div></div><div></div><div></div></div></div><div><div><div><div></div><div></div><div></div></div><div><div></div><div></div><div></div></div></div></div></div><div><div><div><div></div><div></div><div></div></div><div><div></div><div></div><div></div></div></div><div><div><div><div></div><div></div><div></div></div><div><div></div><div></div><div></div></div></div></div></div><div><div><div><div></div><div></div><div></div></div><div><div></div><div></div><div></div></div></div><div><div><div><div></div><div></div><div></div></div><div><div></div><div></div><div></div></div></div></div></div><div><div><div><div></div><div></div><div></div></div><div><div></div><div></div><div></div></div></div><div><div><div><div></div><div></div><div></div></div><div><div></div><div></div><div></div></div></div></div></div><div><div><div><div></div><div></div><div></div></div><div><div></div><div></div><div></div></div></div><div><div><div><div></div><div></div><div></div></div><div><div></div><div></div><div></div></div></div></div></div><div><div><div><div></div><div></div><div></div></div><div><div></div><div></div><div></div></div></div><div><div><div><div></div><div></div><div></div></div><div><div></div><div></div><div></div></div></div></div></div><div><div><div><div></div><div></div><div></div></div><div><div></div><div></div><div></div></div></div><div><div><div><div></div><div></div><div></div></div><div><div></div><div></div><div></div></div></div></div></div><div><div><div><div></div><div></div><div></div></div><div><div></div><div></div><div></div></div></div><div><div><div><div></div><div></div><div></div></div><div><div></div><div></div><div></div></div></div></div></div><div><div><div><div></div><div></div><div></div></div><div><div></div><div></div><div></div></div></div><div><div><div><div></div><div></div><div></div></div><div><div></div><div></div><div></div></div></div></div></div><div><div><div><div></div><div></div><div></div></div><div><div></div><div></div><div></div></div></div><div><div><div><div></div><div></div><div></div></div><div><div></div><div></div><div></div></div></div></div></div><div><div><div><div></div><div></div><div></div></div><div><div></div><div></div><div></div></div></div><div><div><div><div></div><div></div><div></div></div><div><div></div><div></div><div></div></div></div></div></div><div><div><div><div></div><div></div><div></div></div><div><div></div><div></div><div></div></div></div><div><div><div><div></div><div></div><div></div></div><div><div></div><div></div><div></div></div></div></div></div><div><div><div><div></div><div></div><div></div></div><div><div></div><div></div><div></div></div></div><div><div><div><div></div><div></div><div></div></div><div><div></div><div></div><div></div></div></div></div></div><div><div><div><div></div><div></div><div></div></div><div><div></div><div></div><div></div></div></div><div><div><div><div></div><div></div><div></div></div><div><div></div><div></div><div></div></div></div></div></div><div><div><div><div></div><div></div><div></div></div><div><div></div><div></div><div></div></div></div><div><div><div><div></div><div></div><div></div></div><div><div></div><div></div><div></div></div></div></div></div><div><div><div><div></div><div></div><div></div></div><div><div></div><div></div><div></div></div></div><div><div><div><div></div><div></div><div></div></div><div><div></div><div></div><div></div></div></div></div></div><div><div><div><div></div><div></div><div></div></div><div><div></div><div></div><div></div></div></div><div><div><div><div></div><div></div><div></div></div><div><div></div><div></div><div></div></div></div></div></div><div><div><div><div></div><div></div><div></div></div><div><div></div><div></div><div></div></div></div><div><div><div><div></div><div></div><div></div></div><div><div></div><div></div><div></div></div></div></div></div><div><div><div><div></div><div></div><div></div></div><div><div></div><div></div><div></div></div></div><div><div><div><div></div><div></div><div></div></div><div><div></div><div></div><div></div></div></div></div></div><div><div><div><div></div><div></div><div></div></div><div><div></div><div></div><div></div></div></div><div><div><div><div></div><div></div><div></div></div><div><div></div><div></div><div></div></div></div></div></div><div><div><div><div></div><div></div><div></div></div><div><div></div><div></div><div></div></div></div><div><div><div><div></div><div></div><div></div></div><div><div></div><div></div><div></div></div></div></div></div><div><div><div><div></div><div></div><div></div></div><div><div></div><div></div><div></div></div></div><div><div><div><div></div><div></div><div></div></div><div><div></div><div></div><div></div></div></div></div></div><div><div><div><div></div><div></div><div></div></div><div><div></div><div></div><div></div></div></div><div><div><div><div></div><div></div><div></div></div><div><div></div><div></div><div></div></div></div></div></div><div><div><div><div></div><div></div><div></div></div><div><div></div><div></div><div></div></div></div><div><div><div><div></div><div></div><div></div></div><div><div></div><div></div><div></div></div></div></div></div><div><div><div><div></div><div></div><div></div></div><div><div></div><div></div><div></div></div></div><div><div><div><div></div><div></div><div></div></div><div><div></div><div></div><div></div></div></div></div></div><div><div><div><div></div><div></div><div></div></div><div><div></div><div></div><div></div></div></div><div><div><div><div></div><div></div><div></div></div><div><div></div><div></div><div></div></div></div></div></div><div><div><div><div></div><div></div><div></div></div><div><div></div><div></div><div></div></div></div></div></div></div></div>	
---	--

PE PASTERNAK
THE ENGINEER'S RF SOURCE
Pasternack Enterprises, Inc.
P.O. Box 16759 | Irvine | CA | 92623
Phone: (949) 261-1920 | Fax: (949) 261-7451
Website: www.pasternack.com | E-Mail: sales@pasternack.com



SSMC Plug Connector Clamp/Solder Attachment for PE-047SR, PE-SR047AL, PE-SR047FL

RF Connectors Technical Data Sheet

PE45366

Configuration

- SSMC Plug Connector
- 50 Ohms
- Straight Body Geometry
- PE-047SR, PE-SR047AL, PE-SR047FL Interface Type
- Clamp/Solder Attachment

Features

- Max. Operating Frequency 12.4 GHz
- Gold Plated Beryllium Copper Contact
- Contact plating according to MIL-G-45204
- Reliable threaded coupling
- Small SSMC connector form factor (50% smaller than SMA, radially)
- IEC 60169-20 SSMC connector interface
- In stock and ready to ship

Applications

- General Purpose Test
- Custom Cable Assemblies
- Avionics
- A/D Modules
- Data Acquisition
- Software defined radio (SDR)
- RADAR/SONAR
- Ultra Wideband Digital Receivers
- Medical equipment

Description

Pasternack's PE45366 SSMC plug connector with clamp/solder attachment for PE-047SR, PE-SR047AL and PE-SR047FL is part of our full line of RF components available for same-day shipping. Our SSMC plug connector operates up to a maximum frequency of 12.4 GHz.

Our SSMC plug connector PE45366 datasheet specifications and drawing with dimensions are shown below in this PDF. Pasternack's broad catalog of RF, microwave and millimeter wave connectors allows designers to configure and customize their signal connections however they like. Whether the need is to provide an I/O for a board design, or simply create a custom cable assembly configuration, Pasternack has the right connector for the job. Pasternack can also expertly build your custom cable assemblies for you and ship same-day.

Electrical Specifications

Description	Minimum	Typical	Maximum	Units
Frequency Range	DC		12.4	GHz
Insertion Loss			0.3	dB
Operating Voltage (AC)			250	Vrms
High Potential Voltage 5 MHz			400	Vrms
Inner Conductor DC Resistance			4	mOhms
Outer Conductor DC Resistance			1	mOhms
Insulation Resistance	1,000			MOhms
RF Leakage	-50			dB

Click the following link (or enter part number in "SEARCH" on website) to obtain additional part information including price, inventory and certifications: [SSMC Plug Connector Clamp/Solder Attachment for PE-047SR, PE-SR047AL, PE-SR047FL PE45366](#)



SSMC Plug Connector Clamp/Solder Attachment
for PE-047SR, PE-SR047AL, PE-SR047FL

RF Connectors Technical Data Sheet

PE45366

Mechanical Specifications

Size

Length 0.53 in [13.46 mm]

Width/Dia. 0.156 in [3.96 mm]

Mating Cycles

500 Cycles

Mating Torque

1.75 to 2 in-lbs [0.20 to 0.23 Nm]

Material Specifications

Description	Material	Plating
Contact	Beryllium Copper	Gold MIL-G-45204
Insulation	Teflon	
Body	Beryllium Copper	Gold MIL-G-45204
Coupling Nut	Beryllium Copper	Gold MIL-G-45204

Environmental Specifications

Temperature

Operating Range

-65 to +165 deg C

Shock

Method 213, Condition B, 75G @6ms @1/2 sine

Vibration

Method 204, Condition D (20G)

Salt Spray

Method 101, Condition B, 5% salt solution

Compliance Certifications (see [product page](#) for current document)

Plotted and Other Data

Notes:

Click the following link (or enter part number in "SEARCH" on website) to obtain additional part information including price, inventory and certifications: [SSMC Plug Connector Clamp/Solder Attachment for PE-047SR, PE-SR047AL, PE-SR047FL PE45366](#)



SSMC Plug Connector Clamp/Solder Attachment
for PE-047SR, PE-SR047AL, PE-SR047FL

RF Connectors Technical Data Sheet

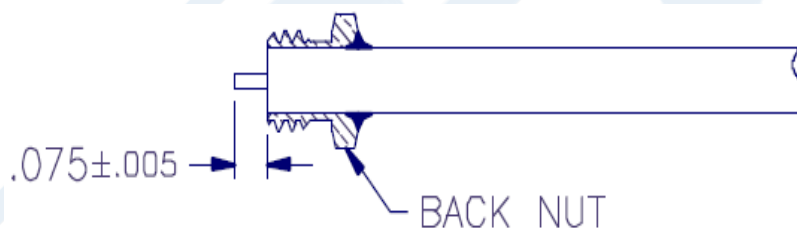
PE45366

Assembly Instruction

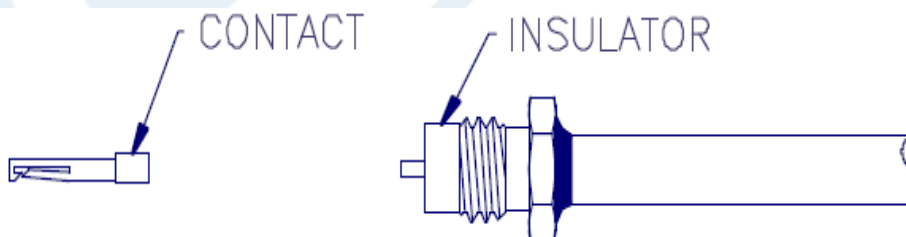
Assembly Instructions



1. TRIM CABLE JACKET ONLY, AS SHOWN ABOVE.



2. SLIDE BACK NUT ONTO CABLE UNTIL TRIMMED END OF JACKET IS FLUSH WITH FRONT OF NUT. SOLDER NUT TO CABLE.
3. TRIM DIELECTRIC AS SHOWN.



4. INSTALL INSULATOR OVER CABLE CENTER CONDUCTOR.
5. SOLDER CONTACT TO CENTER CONDUCTOR.
6. INSERT CABLE ASSEMBLY INTO CONNECTOR BODY AND TIGHTEN TO 35-45 INCH-OUNCES TORQUE.

Click the following link (or enter part number in "SEARCH" on website) to obtain additional part information including price, inventory and certifications: [SSMC Plug Connector Clamp/Solder Attachment for PE-047SR, PE-SR047AL, PE-SR047FL PE45366](#)



SSMC Plug Connector Clamp/Solder Attachment for PE-047SR, PE-SR047AL, PE-SR047FL

RF Connectors Technical Data Sheet

PE45366

SSMC Plug Connector Clamp/Solder Attachment for PE-047SR, PE-SR047AL, PE-SR047FL from Pasternack Enterprises has same day shipment for domestic and International orders. Our RF, microwave and millimeter wave products maintain a 99.4% availability and are part of the broadest selection in the industry.

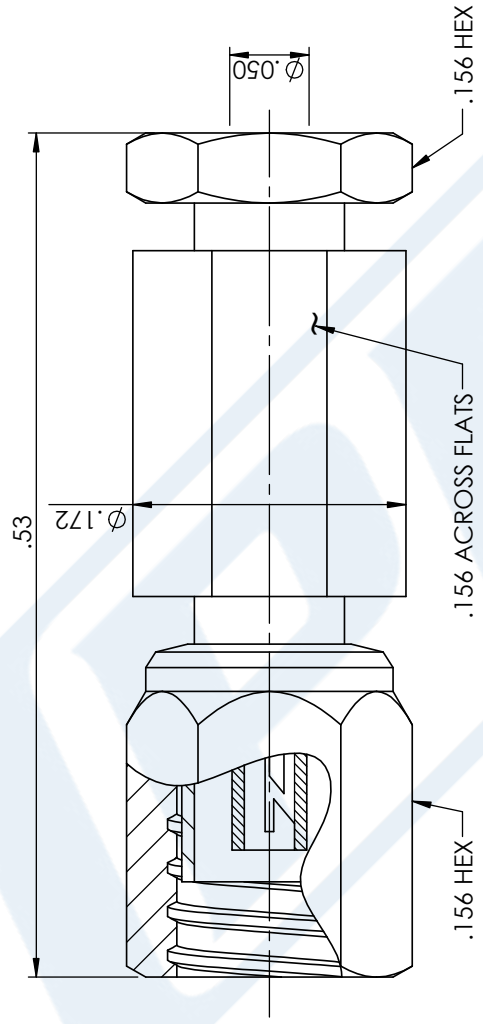
Click the following link (or enter part number in "SEARCH" on website) to obtain additional part information including price, inventory and certifications: [SSMC Plug Connector Clamp/Solder Attachment for PE-047SR, PE-SR047AL, PE-SR047FL PE45366](https://www.pasternack.com/ssmc-plug-pe-047sr-pe-sr047al-pe-sr047fl-connector-pe45366-p.aspx)

URL: <https://www.pasternack.com/ssmc-plug-pe-047sr-pe-sr047al-pe-sr047fl-connector-pe45366-p.aspx>

The information contained in this document is accurate to the best of our knowledge and representative of the part described herein. It may be necessary to make modifications to the part and/or the documentation of the part, in order to implement improvements. Pasternack reserves the right to make such changes as required. Unless otherwise stated, all specifications are nominal. Pasternack does not make any representation or warranty regarding the suitability of the part described herein for any particular purpose, and Pasternack does not assume any liability arising out of the use of any part or documentation.

PE45366 CAD Drawing

SSMC Plug Connector Clamp/Solder Attachment for PE-047SR, PE-SR047AL, PE-SR047FL



STANDARD TOLERANCES	
.X	±0.2
.XX	±0.01
.XXX	±0.005

*STANDARD TOLERANCES APPLY ONLY TO DIMENSIONS IN INCHES

**PASTERNAK®**
THE ENGINEER'S RF SOURCE

Pasternack Enterprises, Inc.
P.O. Box 16759 | Irvine | CA | 92623
Phone: (949) 261-1920 | **Fax:** (949) 261-7451
Website: www.pasternack.com | **E-Mail:** sales@pasternack.com

DWG TITLE
PE45366

CAGE CODE 53919

NOTES:
1. UNLESS OTHERWISE SPECIFIED ALL DIMENSIONS ARE NOMINAL.
2. ALL SPECIFICATIONS ARE SUBJECT TO CHANGE WITHOUT NOTICE AT ANY TIME.
3. DIMENSIONS ARE IN INCHES [mm].

CAD FILE 052217

SCALE N/A

SIZE A

GF0006

047 Semi-rigid Coax Cable with Copper Outer Conductor

TECHNICAL DATA SHEET

PE-047SR

Configuration

Inner Conductor Material and Plating	Copper Clad Steel, Silver
Dielectric Type	PTFE
Shield Materials	Copper

Electrical Specifications

Impedance, Ohms	50
Maximum Operating Frequency, GHz	40
Dielectric Withstanding Voltage, Vrms	2,000

Electrical Specifications by Frequency**Frequency 1**

Frequency, MHz	1000
Attenuation, dB/100ft [dB/100m]	40 [131.23]
Power Handling, Watts	32

Frequency 2

Frequency, GHz	10
Attenuation, dB/100ft [dB/100m]	130 [426.51]
Power Handling, Watts	9

Frequency 3

Frequency, GHz	20
Attenuation, dB/100ft [dB/100m]	190 [623.36]
Power Handling, Watts	6.5

Mechanical Specifications**Temperature**

Operating Range, deg C	-55 to +100
------------------------	-------------

Inner Conductor

Number of Strands	1
Material	Copper Clad Steel
Plating	Silver
Diameter, in [mm]	0.011 [0.28]

Dielectric:

Type	PTFE
Diameter, in [mm]	0.037 [0.94]

Shield:

Number of	1
Material 1	Copper
Diameter, in [mm]	0.047 [1.19]

Click the following link (or enter part number in "SEARCH" on website) to obtain additional part information including price, inventory and certifications: [047 Semi-rigid Coax Cable with Copper Outer Conductor PE-047SR](#)

047 Semi-rigid Coax Cable with Copper Outer Conductor

TECHNICAL DATA SHEET

PE-047SR

Jacket:

Diameter, in [mm]	0.047 [1.19]
One Time Minimum Bend Radius, in [mm]	0.05 [1.27]
Weight, lbs/ft [Kg/m]	0.005 [0.01]

Compliance Certifications (visit www.Pasternack.com for current document)

RoHS Compliant	
REACH Compliant	12/19/2011

Plotted and Other Data

Notes:

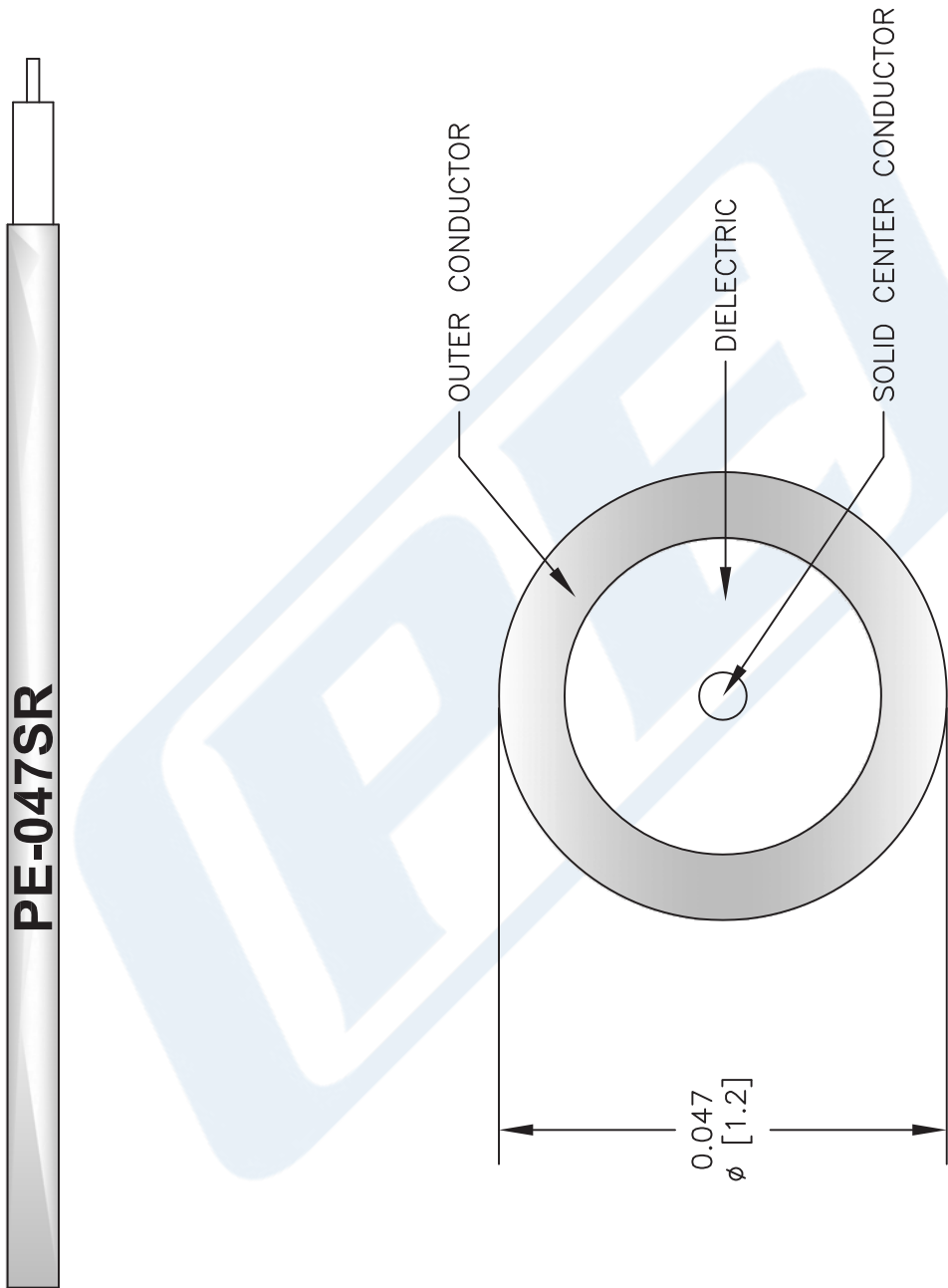
- Values at +25 °C, sea level

047 Semi-rigid Coax Cable with Copper Outer Conductor from Pasternack Enterprises has same day shipment for domestic and International orders. Our RF, microwave and millimeter wave products maintain a 99% availability and are part of the broadest selection in the industry.

Click the following link (or enter part number in "SEARCH" on website) to obtain additional part information including price, inventory and certifications: [047 Semi-rigid Coax Cable with Copper Outer Conductor PE-047SR](http://www.pasternack.com/semirigid-0.047-50-ohm-coax-cable-copper-pe-047sr-p.aspx)

URL: <http://www.pasternack.com/semirigid-0.047-50-ohm-coax-cable-copper-pe-047sr-p.aspx>

The information contained in this document is accurate to the best of our knowledge and representative of the part described herein. It may be necessary to make modifications to the part and/or the documentation of the part, in order to implement improvements. Pasternack reserves the right to make such changes as required. Unless otherwise stated, all specifications are nominal. Pasternack does not make any representation or warranty regarding the suitability of the part described herein for any particular purpose, and Pasternack does not assume any liability arising out of the use of any part or documentation.



NOTES: 1. UNLESS OTHERWISE SPECIFIED ALL DIMENSIONS ARE NOMINAL. 2. ALL SPECIFICATIONS ARE SUBJECT TO CHANGE WITHOUT NOTICE AT ANY TIME. 3. DIMENSIONS ARE IN INCHES [mm].			
CAD FILE	073113	SCALE	N/A
SIZE	A		2233

DWG TITLE PE-047SR	
FSCM NO.	53919

**PASTERNAK®**
Pasternack Enterprises, Inc.
P.O. Box 16759 | Irvine | CA | 92623
Phone: (949) 261-1920 | Fax: (949) 261-7451
Website: www.pasternack.com | E-Mail: sales@pasternack.com