



7/16 DIN Female Precision Calibration Kit Component Load Operating from DC to 7.5 GHz

Calibration Kits Components Technical Data Sheet

PE5TR1012

Features

- Precision Controlled Impedance
- Ultra Low VSWR
- Replaces Existing Calibrating Kit Components
- Serial Numbers on Shorts, Opens and Loads
- In Stock and Ready to Ship

Applications

- Vector Network Analyzer Calibration
- SOLT or OSLT Calibration
- Device Characterization
- De-embedding
- Precision Calibrating Kits

Description

Pasternack's PE5TR1012 7/16 DIN female precision load is part of our full line of RF components available for same-day shipping. This 7/16 DIN, precision load is suitable for calibrating on most network and site analyzers. The controlled impedance of this broadband 7/16 DIN load delivers low VSWR and supports calibrations through the entire frequency range of the precision connector interface.

Our 7/16 DIN female precision load datasheet, specifications and drawing with dimensions are shown below in this PDF. Pasternack's broad catalog of RF, microwave and millimeter wave components allow designers to configure and customize their test solutions however they like. Whether the need is to provide precise SOLT / OSLT network analyzer calibrations or calibration kit replacement, Pasternack can ship you the right components same day.

Electrical Specifications

Description	Minimum	Typical	Maximum	Units
Frequency Range	DC		7.5	GHz
Impedance		50		Ohms
Input Power, CW			3	Watts
Input Power, Peak			1	kWatts

Specifications by Frequency

Description	F1	F2	F3	F4	F5	Units
Frequency Range	DC to 4	4 to 7.5				GHz
VSWR, Max	1.02:1	1.03:1				

Click the following link (or enter part number in "SEARCH" on website) to obtain additional part information including price, inventory and certifications: [7/16 DIN Female Precision Calibration Kit Component Load Operating from DC to 7.5 GHz PE5TR1012](#)



7/16 DIN Female Precision Calibration Kit Component Load Operating from DC to 7.5 GHz

Calibration Kits Components Technical Data Sheet

PE5TR1012

Mechanical Specifications

Size

Length	2.8 in [71.12 mm]
Width/Diameter	1.05 in [26.67 mm]
Pin Depth	0.0682 to 0.0697 in

Connector 1

Connector Type	7/16 DIN Female
Body Material and Plating	Stainless Steel

Connector 2

Environmental Specifications

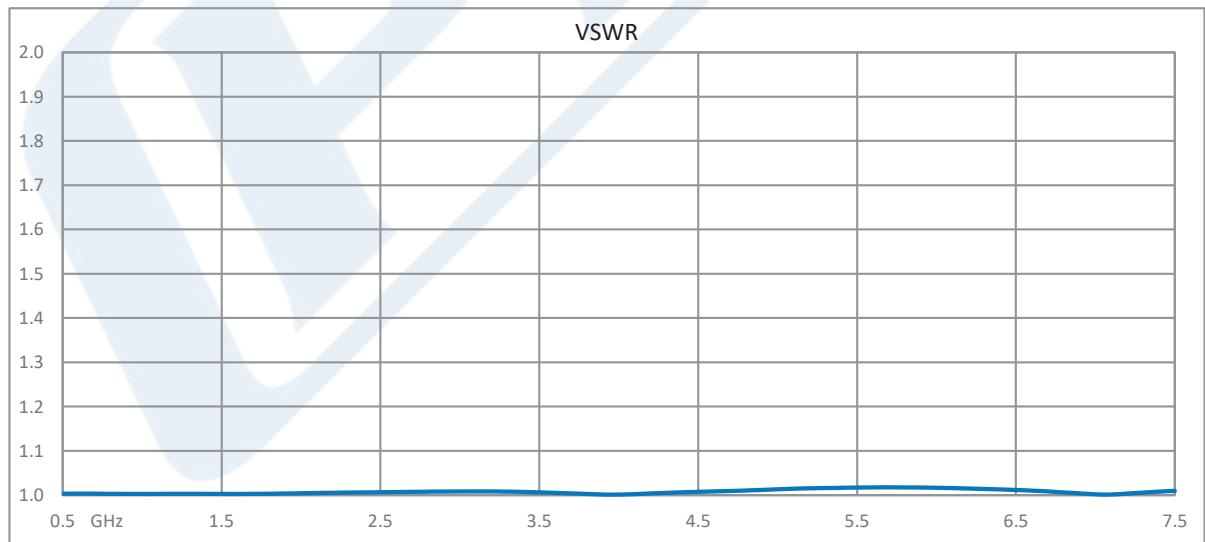
Compliance Certifications (see [product page](#) for current document)

Plotted and Other Data

Notes:

- Values at +25 °C, sea level

Typical Performance Data



Click the following link (or enter part number in "SEARCH" on website) to obtain additional part information including price, inventory and certifications: [7/16 DIN Female Precision Calibration Kit Component Load Operating from DC to 7.5 GHz PE5TR1012](#)



7/16 DIN Female Precision Calibration Kit Component Load Operating from DC to 7.5 GHz

Calibration Kits Components Technical Data Sheet

PE5TR1012

7/16 DIN Female Precision Calibration Kit Component Load Operating from DC to 7.5 GHz from Pasternack Enterprises has same day shipment for domestic and International orders. Our RF, microwave and millimeter wave products maintain a 99.4% availability and are part of the broadest selection in the industry.

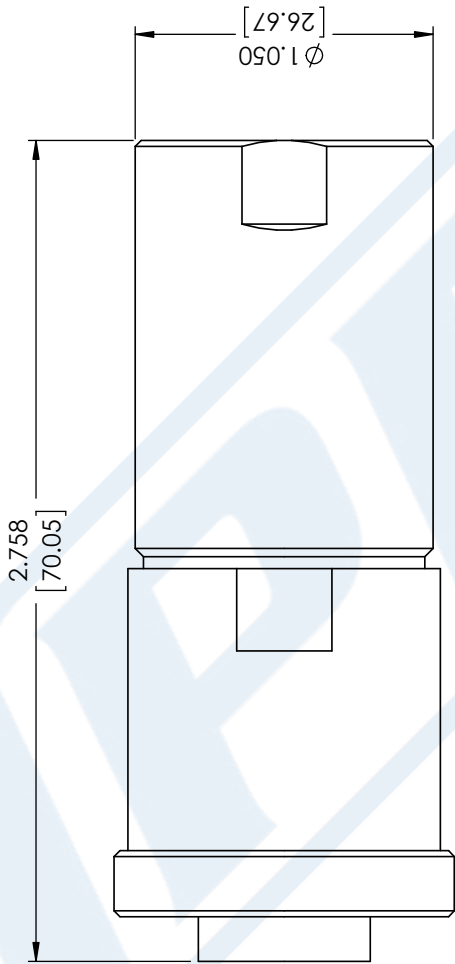
Click the following link (or enter part number in "SEARCH" on website) to obtain additional part information including price, inventory and certifications: [7/16 DIN Female Precision Calibration Kit Component Load Operating from DC to 7.5 GHz PE5TR1012](https://www.pasternack.com/7-16-din-female-calibration-kit-component-load-7.5-ghz-pe5tr1012-p.aspx)

URL: <https://www.pasternack.com/7-16-din-female-calibration-kit-component-load-7.5-ghz-pe5tr1012-p.aspx>

The information contained in this document is accurate to the best of our knowledge and representative of the part described herein. It may be necessary to make modifications to the part and/or the documentation of the part, in order to implement improvements. Pasternack reserves the right to make such changes as required. Unless otherwise stated, all specifications are nominal. Pasternack does not make any representation or warranty regarding the suitability of the part described herein for any particular purpose, and Pasternack does not assume any liability arising out of the use of any part or documentation.

PE5TR1012 CAD Drawing

7/16 DIN Female Precision Calibration Kit Component Load Operating from DC to 7.5 GHz



STANDARD TOLERANCES

.X ±0.2
.XX ±0.01
.XXX ±0.005

*STANDARD TOLERANCES APPLY ONLY TO DIMENSIONS IN INCHES



Pasternack Enterprises, Inc.
P.O. Box 16759 | Irvine | CA | 92623
Phone: (949) 261-1920 | Fax: (949) 261-7451
Website: www.pasternack.com | E-Mail: sales@pasternack.com

DWG TITLE

PE5TR1012

CAGE CODE 53919

NOTES:
1. UNLESS OTHERWISE SPECIFIED ALL DIMENSIONS ARE NOMINAL.
2. ALL SPECIFICATIONS ARE SUBJECT TO CHANGE WITHOUT NOTICE AT ANY TIME.
3. DIMENSIONS ARE IN INCHES [mm].

CAD FILE MIDDYY

SCALE N/A

SIZE A

CN2245