

10 dB RF fixed attenuator 2W, DC to 6GHz,
SMA Male to SMA Female, Stainless Steel



PE7608-10

Features

- DC to 6 GHz Range
- Attenuation 10 \pm 0.6 dB
- 2 Watts (CW) Power
- VSWR <1.35:1

Applications

- Precision Measurements
- Production Systems
- Instrumentation
- Prototyping and Characterization

Description

Pasternack carries a wide range of fixed attenuators with a broad selection of attenuation levels, frequency ranges, and power dissipation ranges. RF microwave attenuators (also known as RF pads) lower the amplitude of a signal (attenuate) a known amount and can be used in a wide variety of applications. These attenuators pads are used when a signal needs to be reduced to protect measurement equipment or other circuitry, to extend the range of power meters and amplifiers, and to impedance match circuits by reducing the VSWR seen by adjacent components. RF attenuators can prevent signal overload in amplifiers, receivers and detectors, adjusting the signal level to a range that is optimal.

Few RF components are as commonly used as fixed coaxial attenuators, and Pasternack carries one of the largest in-stock varieties and ships them same day. The 10 dB Fixed Attenuators PE7608-10 is rated to 2 Watts and operates from DC to 6 GHz. The versatile coaxial package uses SMA male to SMA female connectors.

Electrical Specifications

Description	Minimum	Typical	Maximum	Units
Frequency Range	DC		6	GHz
Impedance		50		Ohms
Nominal Attenuation		10		dB
Attenuation Accuracy		0.6		dB
VSWR			1.35:1	
Input Power, CW			2	Watts

Specifications by Frequency

Description	F1	F2	F3	F4	F5	Units
Frequency Range	DC to 4	4 to 6				GHz
VSWR, Max	1.2:1	1.35:1				

Mechanical Specifications

Size

Length	0.98 in [24.89 mm]
Width/Diameter	0.315 in [8 mm]
Height	0.315 in [8 mm]
Weight	0.01 lbs [4.54 g]
Body Material and Plating	Passivated Stainless Steel

Configuration

Design	Fixed, Bidirectional
--------	----------------------

10 dB RF fixed attenuator 2W, DC to 6GHz,
SMA Male to SMA Female, Stainless Steel



PE7608-10

Connectors

Description	Connector 1	Connector 2
Type	SMA Male	SMA Female
Contact Material and Plating	Beryllium Copper, Gold	Beryllium Copper, Gold
Dielectric Type	Teflon	Teflon
Body Material and Plating	Passivated Stainless Steel	Passivated Stainless Steel

Environmental Specifications

Temperature

Operating Range -50 to +85 deg C

Compliance Certifications (see [product page](#) for current document)

Plotted and Other Data

Notes:

Typical Performance Data

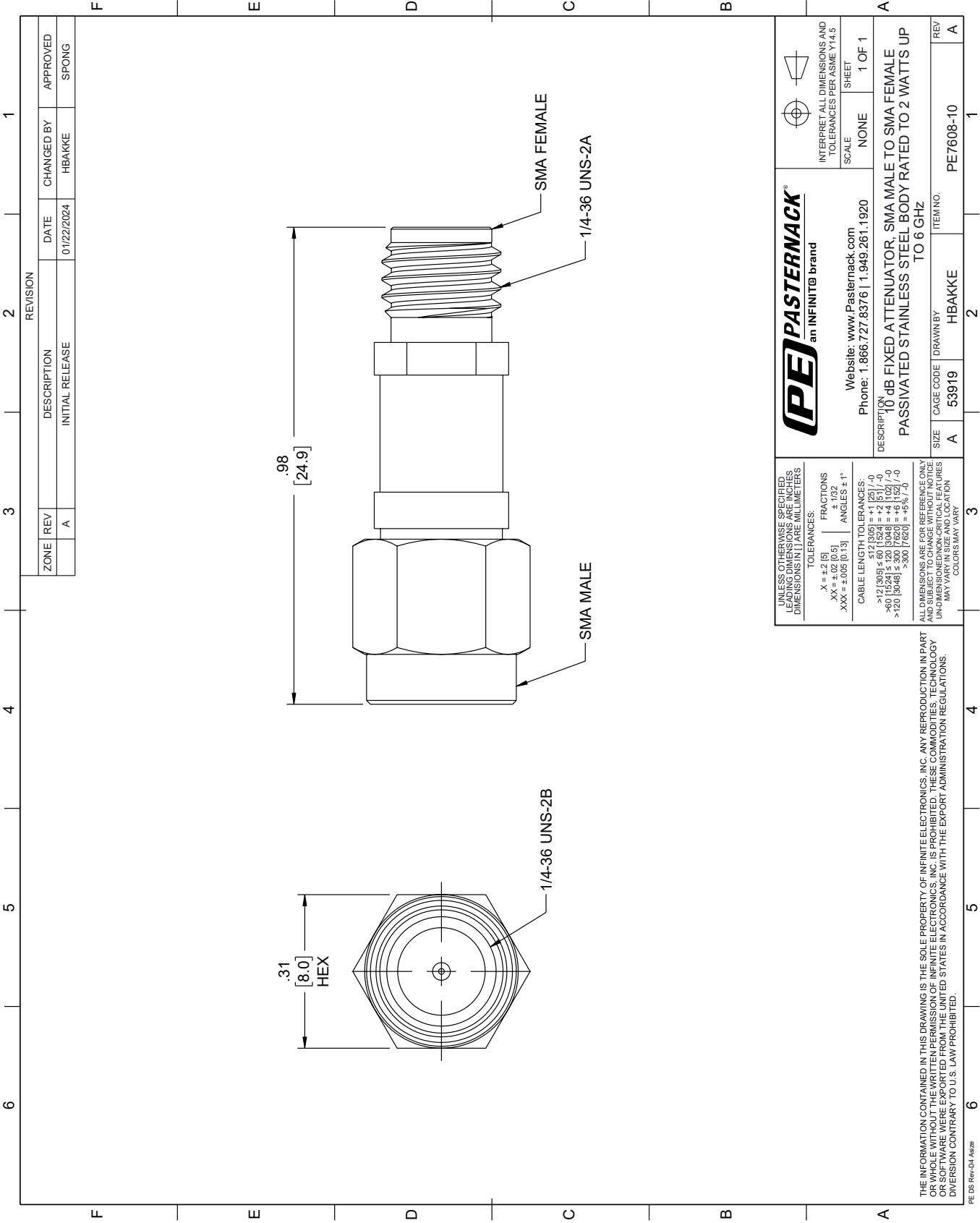
10 dB RF fixed attenuator 2W, DC to 6GHz, SMA Male to SMA Female, Stainless Steel from Pasternack Enterprises has same day shipment for domestic and International orders. Our RF, microwave and millimeter wave products maintain a 99.4% availability and are part of the broadest selection in the industry.

Click the following link (or enter part number in "SEARCH" on website) to obtain additional part information including price, inventory and certifications: [10 dB RF fixed attenuator 2W, DC to 6GHz, SMA Male to SMA Female, Stainless Steel PE7608-10](#)

URL: <https://www.pasternack.com/10db-fixed-sma-male-sma-female-2-watts-attenuator-pe7608-10-p.aspx>

The information contained within this document is accurate to the best of our knowledge and representative of the part described herein. It may be necessary to make modifications to the part and/or the documentation of the part in order to implement improvements. Pasternack Enterprises reserves the right to make such changes as required. Unless otherwise stated, all specifications are nominal. Pasternack Enterprises does not make any representation or warranty regarding the suitability of the part described herein for any particular purpose, and Pasternack Enterprises does not assume liability arising out of the use of any part or document.

PE7608-10 CAD Drawing
10 dB RF fixed attenuator 2W, DC to 6GHz, SMA Male to SMA Female, Stainless Steel



REVISION		DATE	CHANGED BY	APPROVED
ZONE	REV			
	A	01/22/2024	HBAKKE	SPONG

(PE) PASTERNAK an INFINITE® brand		Website: www.Pasternack.com Phone: 1.866.727.8376 1.949.261.1920		INTERPRET ALL DIMENSIONS AND TOLERANCES PER ASME Y14.5	
UNLESS OTHERWISE SPECIFIED, ALL DIMENSIONS ARE IN INCHES. DIMENSIONS IN [] ARE IN MILLIMETERS.		TOLERANCES:		SCALE: NONE	
.X = ±.2 [5]		FRACTIONS ± 1/32		SHEET 1 OF 1	
.XX = ±.02 [0.5]		ANGLES ± 1°			
.XXX = ±.005 [0.13]					
CABLE LENGTH TOLERANCES:					
>12 [305] ≤ 60 [1524] = ±.125 [-0]					
>60 [1524] ≤ 120 [3048] = ±.125 [-0]					
>120 [3048] ≤ 300 [7620] = ±.125 [-0]					
>300 [7620] = ±.125 [-0]					
ALL DIMENSIONS ARE FOR REFERENCE ONLY. DIMENSIONS SHALL BE TO THE CENTER OF THE HOLE UNLESS OTHERWISE SPECIFIED. DIMENSIONS MAY VARY IN SIZE AND LOCATION. COLORS MAY VARY.					
DESCRIPTION 10 dB FIXED ATTENUATOR, SMA MALE TO SMA FEMALE PASSIVATED STAINLESS STEEL BODY RATED TO 2 WATTS UP TO 6 GHz		ITEM NO. PE7608-10		REV A	
SIZE A		CAGE CODE 53919		DRAWN BY HBAKKE	

THE INFORMATION CONTAINED IN THIS DRAWING IS THE SOLE PROPERTY OF INFINITE ELECTRONICS, INC. ANY REPRODUCTION IN PART OR WHOLE WITHOUT THE WRITTEN PERMISSION OF INFINITE ELECTRONICS, INC. IS PROHIBITED. THESE COMMODITIES, TECHNOLOGY OR SOFTWARE WERE EXPORTED FROM THE UNITED STATES IN ACCORDANCE WITH THE EXPORT ADMINISTRATION REGULATIONS. DIVISION CONTRARY TO U.S. LAW PROHIBITED.

PE DS Rev-D4 Adda