

RP SMA Male to N Male Adapter, VSWR 1.2 up to 6 GHz



PE91733

Configuration

- SMA Male Reverse Polarity Connector 1
- N Male Connector 2
- 50 Ohms Impedance

Features

- Max VSWR of 1.2:1 up to 6 GHz
- Gold over Nickel over Copper Plated Beryllium Copper Contact

Applications

- Allows Connection Between Series
- General Purpose Test

Description

Pasternack's PE91733 RP SMA male to type N male adapter is part of our full line of RF components available for same-day shipping. Our Reverse Polarity SMA to type N adapter has a male to male gender configuration. PE91733 Reverse Polarity SMA male to type N male adapter operates to 6 GHz. The Pasternack RF adapter provides excellent VSWR of 1.2:1 maximum. This RP SMA to type N adapter allows for easier connections in tight spaces.

RF adapters are often used to enable connections between two connector types that would otherwise not mate. Certain adapter configurations can also be used to protect connectors on expensive equipment where the number of connect/disconnect cycles is high. An RF, microwave or millimeter wave adapter is connected to the equipment, and the commonly changed connection is made with the adapter which can be easily replaced when it wears out after high usage; such adapters are referred to as connector savers. Pasternack also offers bulkhead, panel mount, hermetically sealed, reverse polarity, and isolated ground adapter varieties to serve all of your RF, microwave and millimeter wave needs.

Electrical Specifications

Description	Minimum	Typical	Maximum	Units
Frequency Range	DC		6	GHz
Impedance		50		Ohms
VSWR			1.2:1	
Insertion Loss			0.098	dB
Operating Voltage (AC)			500	Vrms
Dielectric Withstanding Voltage (AC)			1,500	Vrms
Insulation Resistance	5,000			MOhms

Mechanical Specifications

Size

Length	1.13 in [28.60 mm]
Width	0.83 in [21.01 mm]
Height	0.83 in [21.01 mm]
Weight	0.09 lbs [38.56 g]

Description	Connector 1	Connector 2
Polarity	Reverse Polarity	
Mating Cycles, Min	100	500

RP SMA Male to N Male Adapter, VSWR 1.2 up to 6 GHz



PE91733

Description	Connector 1	Connector 2
Contact Retention Force, Min	60.7 lbs [27.53 kg]	101.2 lbs [45.9 kg]
Contact Captivation Axial Force, Min	6.1 lbs [2.77 kg]	6.3 lbs [2.86 kg]
Coupling Proof Torque	5.3 in-lbs [0.6 Nm]	15 in-lbs [1.7 Nm]

Material Specifications

Description	Connector 1		Connector 2	
	Material	Plating	Material	Plating
Type	SMA Male Reverse Polarity		N Male	
Contact	Beryllium Copper	Gold over Nickel over Copper	Beryllium Copper	Gold over Nickel over Copper
Body	Brass	Copper-Tin-Zinc Alloy	Brass	Copper-Tin-Zinc Alloy
Gasket	Silicone		Silicone	

Environmental Specifications

Temperature

Operating Range

-65 to +165 °C

Humidity

MIL-STD-202, Method 206

Thermal Shock

MIL-STD-202, Method 107, Condition B

Salt Spray

MIL-STD-202, Method 101, Condition B

Compliance Certifications (see [product page](#) for current document)

Plotted and Other Data

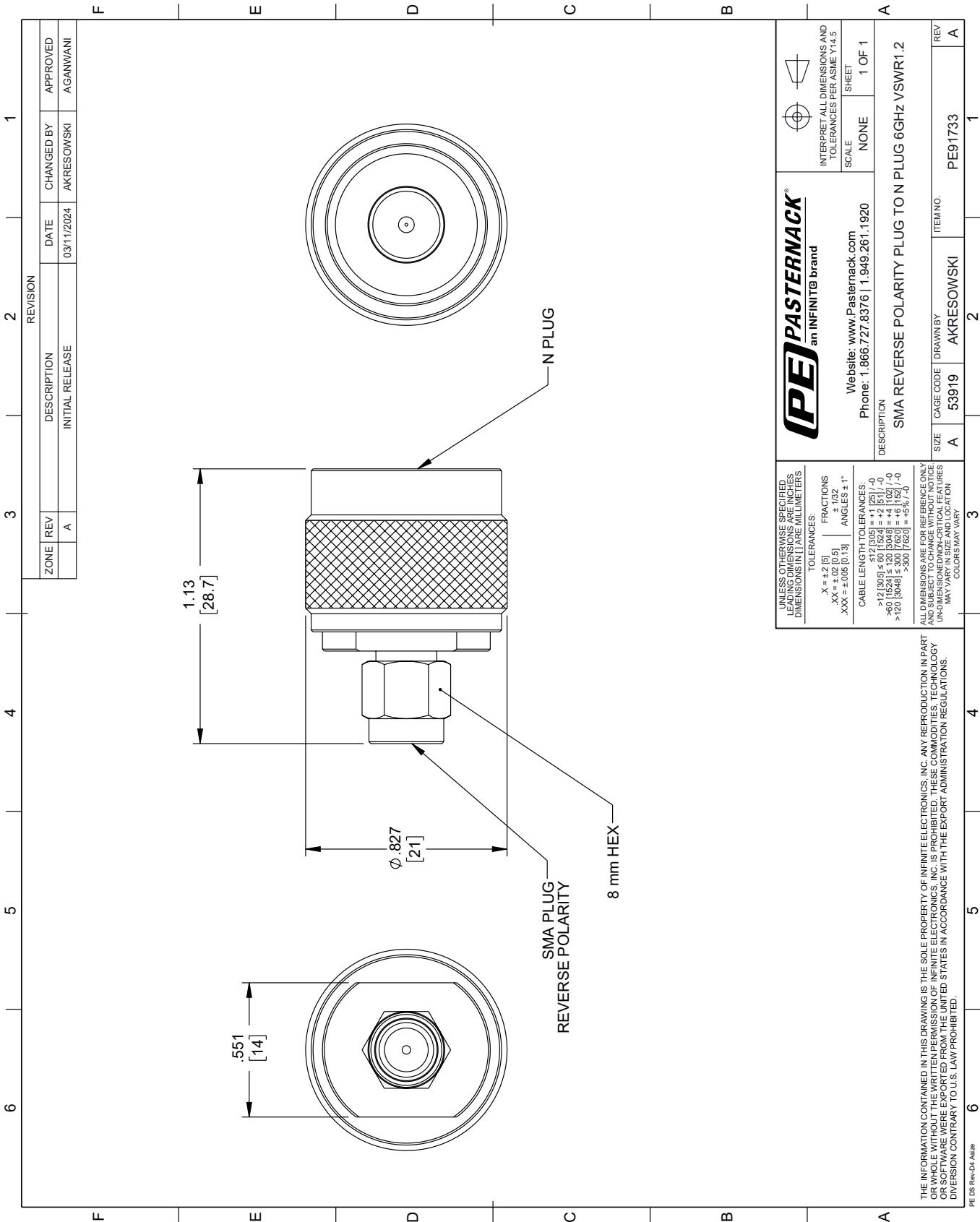
RP SMA Male to N Male Adapter, VSWR 1.2 up to 6 GHz from Pasternack Enterprises has same day shipment for domestic and International orders. Our RF, microwave and millimeter wave products maintain a 99.4% availability and are part of the broadest selection in the industry.

Click the following link (or enter part number in "SEARCH" on website) to obtain additional part information including price, inventory and certifications: [RP SMA Male to N Male Adapter, VSWR 1.2 up to 6 GHz PE91733](#)

URL: <https://www.pasternack.com/rp-sma-male-to-n-male-adapter-pe91733-p.aspx>

The information contained within this document is accurate to the best of our knowledge and representative of the part described herein. It may be necessary to make modifications to the part and/or the documentation of the part in order to implement improvements. Pasternack Enterprises reserves the right to make such changes as required. Unless otherwise stated, all specifications are nominal. Pasternack Enterprises does not make any representation or warranty regarding the suitability of the part described herein for any particular purpose, and Pasternack Enterprises does not assume liability arising out of the use of any part or document.

PE91733 CAD Drawing
RP SMA Male to N Male Adapter, VSWR 1.2 up to 6 GHz



UNLESS OTHERWISE SPECIFIED, DIMENSIONS ARE IN INCHES. DIMENSIONS IN [] ARE MILLIMETERS.		TOLERANCES:		FRACTIONS		ANGLES	
.X = ±.2 [5]		.XX = ±.02 [0.5]		.XXX = ±.005 [0.13]		± 1/32	
CABLE LENGTH TOLERANCES:		>12 [305] ≤ 60 [1524] = ±.12 [3.05]		>60 [1524] ≤ 120 [3048] = ±.10 [2.54]		>120 [3048] ≤ 300 [7620] = ±.12 [3.05]	
ALL DIMENSIONS ARE FOR REFERENCE ONLY. UNLESS OTHERWISE SPECIFIED, DIMENSIONS ARE IN INCHES. DIMENSIONS IN [] ARE MILLIMETERS. COLORS MAY VARY.		CAGE CODE		DRAWN BY		ITEM NO.	
A		53919		AKRESOWSKI		PE91733	
REV		A		1		1	