

## RP SMA Snap On Male to SMA Female Adapter, VSWR 1.2 up to 6 GHz



### PE91735

#### Configuration

- Snap-On SMA Male Reverse Polarity Connector 1
- SMA Female Connector 2
- 50 Ohms Impedance

#### Features

- Max VSWR of 1.2:1 up to 6 GHz
- Gold over Nickel over Copper Plated Beryllium Copper Contact

#### Applications

- General Purpose Test

#### Description

Pasternack's PE91735 snap-on RP SMA male to SMA female adapter is part of our full line of RF components available for same-day shipping. Our Reverse Polarity SMA to SMA adapter has a male to female gender configuration. PE91735 Reverse Polarity SMA male to SMA female adapter operates to 6 GHz. The Pasternack RF adapter provides excellent VSWR of 1.2:1 maximum. This RP SMA to SMA adapter allows for easier connections in tight spaces.

RF adapters are often used to enable connections between two connector types that would otherwise not mate. Certain adapter configurations can also be used to protect connectors on expensive equipment where the number of connect/disconnect cycles is high. An RF, microwave or millimeter wave adapter is connected to the equipment, and the commonly changed connection is made with the adapter which can be easily replaced when it wears out after high usage; such adapters are referred to as connector savers. Pasternack also offers bulkhead, panel mount, hermetically sealed, Reverse Polarity, and isolated ground adapter varieties to serve all of your RF, microwave and millimeter wave needs.

#### Electrical Specifications

Description	Minimum	Typical	Maximum	Units
Frequency Range	DC		6	GHz
Impedance		50		Ohms
VSWR			1.2:1	
Insertion Loss			0.098	dB
Operating Voltage (AC)			500	Vrms
Dielectric Withstanding Voltage (AC)			1,500	Vrms
Insulation Resistance	5,000			MOhms

#### Mechanical Specifications

##### Size

Length	0.67 in [16.99 mm]
Width	0.32 in [8.00 mm]
Height	0.32 in [8.00 mm]
Weight	0.09 lbs [38.56 g]

Description	Connector 1	Connector 2
Polarity	Reverse Polarity	
Mating Cycles, Min	100	100

## RP SMA Snap On Male to SMA Female Adapter, VSWR 1.2 up to 6 GHz



**PE91735**

Description	Connector 1	Connector 2
Contact Captivation Axial Force, Min	6.1 lbs [2.77 kg]	6.1 lbs [2.77 kg]
Coupling Proof Torque		5.3 in-lbs [0.6 Nm]

### Material Specifications

Description	Connector 1		Connector 2	
	Material	Plating	Material	Plating
Type	Snap-On SMA Male Reverse Polarity		SMA Female	
Contact	Beryllium Copper	Gold over Nickel over Copper	Beryllium Copper	Gold over Nickel over Copper
Body	Brass	Gold over Nickel over Copper	Brass	Gold over Nickel over Copper

### Environmental Specifications

#### Temperature

Operating Range

-65 to +165 °C

Humidity

MIL-STD-202, Method 206

Thermal Shock

MIL-STD-202, Method 107, Condition B

Salt Spray

MIL-STD-202, Method 101, Condition B

**Compliance Certifications** (see [product page](#) for current document)

### Plotted and Other Data

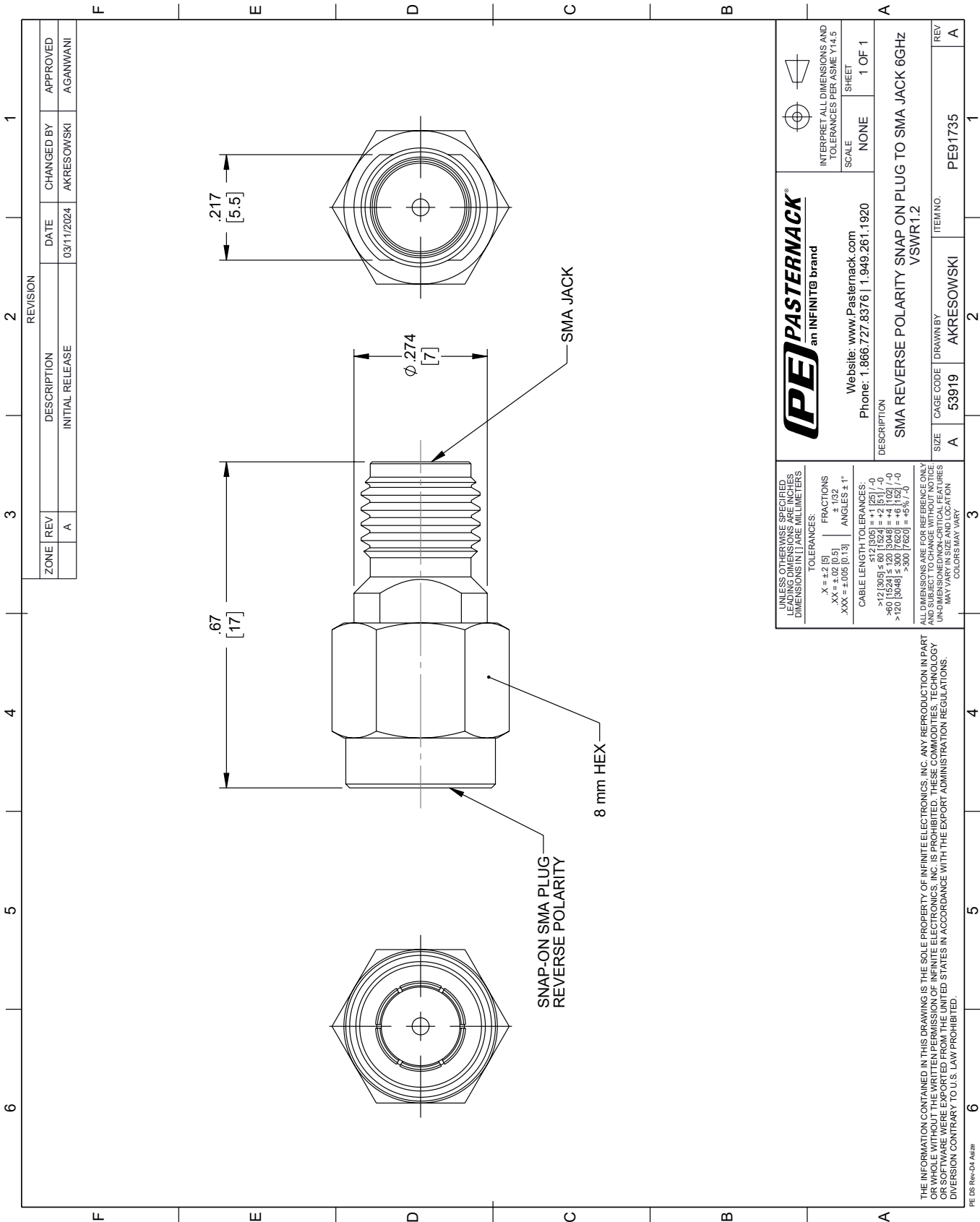
RP SMA Snap On Male to SMA Female Adapter, VSWR 1.2 up to 6 GHz from Pasternack Enterprises has same day shipment for domestic and International orders. Our RF, microwave and millimeter wave products maintain a 99.4% availability and are part of the broadest selection in the industry.

Click the following link (or enter part number in "SEARCH" on website) to obtain additional part information including price, inventory and certifications: [RP SMA Snap On Male to SMA Female Adapter, VSWR 1.2 up to 6 GHz PE91735](#)

URL: <https://www.pasternack.com/rp-sma-to-sma-female-adapter-pe91735-p.aspx>

The information contained within this document is accurate to the best of our knowledge and representative of the part described herein. It may be necessary to make modifications to the part and/or the documentation of the part in order to implement improvements. Pasternack Enterprises reserves the right to make such changes as required. Unless otherwise stated, all specifications are nominal. Pasternack Enterprises does not make any representation or warranty regarding the suitability of the part described herein for any particular purpose, and Pasternack Enterprises does not assume liability arising out of the use of any part or document.

PE91735 CAD Drawing
RP SMA Snap On Male to SMA Female Adapter, VSWR 1.2 up to 6 GHz



UNLESS OTHERWISE SPECIFIED, LEADING DIMENSIONS ARE IN INCHES, TRAILING DIMENSIONS ARE IN MILLIMETERS		<b>PE PASTERNAK</b> an INFINITE® brand		INTERPRET ALL DIMENSIONS AND TOLERANCES PER ASME Y14.5	
TOLERANCES:		Website: <a href="http://www.Pasternack.com">www.Pasternack.com</a>		SCALE	
X = ±.2 [5]		Phone: 1.866.727.8376   1.949.261.1920		NONE	
.XX = ±.02 [0.5]				SHEET	
.XXX = ±.005 [0.13]				1 OF 1	
ANGLES ± 1°					
CABLE LENGTH TOLERANCES:		DESCRIPTION			
>12 [305] ≤ 60 [1524] = ±.125 [-0]		SMA REVERSE POLARITY SNAP ON PLUG TO SMA JACK 6GHz			
>60 [1524] ≤ 120 [3048] = ±.125 [-0]		VSWR1.2			
>120 [3048] ≤ 300 [7620] = ±.125 [-0]					
>300 [7620] = ±.125 [-0]					
ALL DIMENSIONS ARE FOR REFERENCE ONLY. UNLESS OTHERWISE SPECIFIED, DIMENSIONS MAY VARY IN SIZE AND LOCATION. COLORS MAY VARY.		SIZE		REV	
		A		A	
		CAGE CODE		ITEM NO.	
		53919		PE91735	
		DRAWN BY			
		AKRESOWSKI			