

4 Cellular, 1 GPS Combination Antenna 4 SMA, 1 SMA Connector Black



PEANOM1102

Features

- 4 x Cellular 4G/5G SMA Male
- 1 x GPS L1 / G1 SMA Male
- MIMO Capable
- 17 ft Cable Leads
- Indoor/Outdoor IP69K Rated
- UV Stabilized Black ABS

Applications

- Public Safety
- Emergency Services
- Mobile Base Stations
- Autonomous Vehicles
- Fleet Management
- Smart Cities
- Smart Utilities
- Industrial IoT

Description

The Pasternack PEANOM1102 is a 5-in-1 combination antenna designed for public safety, emergency services, mobile base stations, autonomous vehicles, fleet management, smart cities, smart utilities, or industrial IoT applications. This vertically polarized omnidirectional antenna has SMA male connectors with 17 feet cable leads. Our high-quality mobile antenna with 5 ports has a typical input VSWR of 2:1.

The IoT combination antenna from Pasternack has an overall length of 7 inches, width of 7 inches, and weight of 4 lbs. This PEANOM1102 mobile antenna is IP69K-rated and has a black-colored radome made of UV-stabilized ABS. The 4 cellular, 1 GPS combination antenna has an impedance of 50 Ohms and a maximum input power of 10 Watts.

Our vertically polarized mobile antenna can operate at temperatures ranging from -40 to 70 degrees C. This MIMO-capable IoT antenna features four 4G/5G, and one L1/G1 GPS band elements in one radome. Emergency services, first responders, and fleets can rely on our 5-in-1 combination antenna to maintain a secure link between vehicles and dispatch centers.

Configuration

Design	Mobile
Radiation Pattern	Omni Directional
Polarization	Vertical
Connector Type	SMA Male
Number of Ports	5

Electrical Specifications

Description	Minimum	Typical	Maximum	Units
Input VSWR		2:1		
Impedance		50		Ohms
Input Power			10	Watts
Cellular Specifications				
Frequency Range	617 - 960	1690 - 2700	3300 - 4200	4900 - 6000 MHz
Peak Gain	4	6	7	8 dBi
Port Count		4		
Cable Type		RG58		
Cable Length		17 [5]		ft [m]
Connector Type		SMA Male		

4 Cellular, 1 GPS Combination Antenna
4 SMA, 1 SMA Connector Black



PEANOM1102

GPS Specifications		
Frequency Range	1562 - 1612	MHz
VSWR	<2.0:1 ± 4 MHz	
LNA Gain	26	dB
Out of band rejection	>40 dB (@ > +/- 100 MHz)	
Typical Noise Figure	≤ 2.7	dB
Notch Filter rejection @787MHz	24	dB
Operating Voltage	3 - 5	VDC
Typical Current	15	mA
Cable Type / Length	RG174 / 17 ft [5 m]	
Connector Type	SMA Male	

Mechanical Specifications

Radome Material	UV Stabilized ABS
Size	
Length	7 in [177.8 mm]
Width	7 in [177.8 mm]
Height	3.15 in [80.01 mm]
Weight	4 lbs [1.81 kg]

Environmental Specifications

Temperature	
Operating Range	-40 to +70 deg C
Ingress Protection	IP69K

Compliance Certifications (see [product page](#) for current document)

Plotted and Other Data

Notes:

4 Cellular, 1 GPS Combination Antenna
4 SMA, 1 SMA Connector Black



PEANOM1102

Typical Radiation Pattern

Appendix

Electrical Downtilt: Angle in the antenna's elevation pattern in which the maximum gain occurs.

Gain: Antenna's average gain.

Front to Back Ratio @ 180°±30°: Average difference between the antenna's maximum gain and the maximum gain in the antenna's back lobe over ±30° angles.

Cross-polarization Ratio (dB): Typical difference between the co-polarization and cross-polarization gain across the sector's 3 dB Beam Width.

Dedicated to serving the needs of the Wireless Internet Service Provider (WISP) market, KP Performance Antennas offers purpose built products that reliably perform in the field. KP Performance Antennas product line consists of Yagi, Grid, Omni, Dish and other style antennas that operate in the 900 MHz, 2.4 GHz, 3 GHz, and 5 GHz frequencies.

4 Cellular, 1 GPS Combination Antenna 4 SMA, 1 SMA Connector Black from Pasternack Enterprises has same day shipment for domestic and International orders. Our RF, microwave and millimeter wave products maintain a 99.4% availability and are part of the broadest selection in the industry.

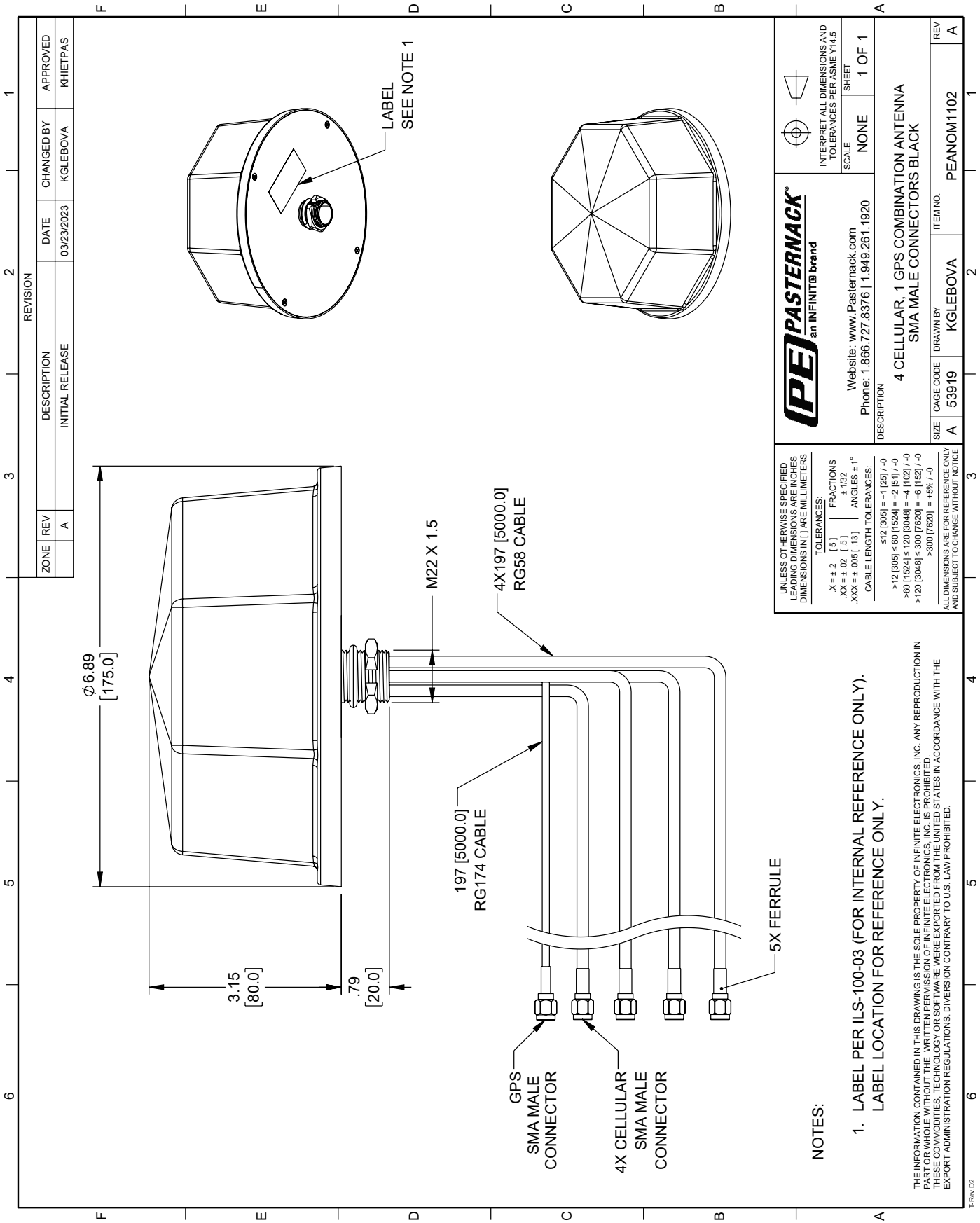
Click the following link (or enter part number in "SEARCH" on website) to obtain additional part information including price, inventory and certifications: [4 Cellular, 1 GPS Combination Antenna 4 SMA, 1 SMA Connector Black PEANOM1102](#)

URL: <https://www.pasternack.com/band-mobile-antenna-sma-connector-peanom1102-p.aspx>

The information contained within this document is accurate to the best of our knowledge and representative of the part described herein. It may be necessary to make modifications to the part and/or the documentation of the part in order to implement improvements. Pasternack Enterprises reserves the right to make such changes as required. Unless otherwise stated, all specifications are nominal. Pasternack Enterprises does not make any representation or warranty regarding the suitability of the part described herein for any particular purpose, and Pasternack Enterprises does not assume liability arising out of the use of any part or document.

PEANOM1102 CAD Drawing

4 Cellular, 1 GPS Combination Antenna 4 SMA, 1 SMA Connector Black



UNLESS OTHERWISE SPECIFIED LENGTH DIMENSIONS ARE IN INCHES DIMENSIONS IN [] ARE MILLIMETERS		TOLERANCES:		PE PASTERNAK® an INFINITB brand			
X = ±.2 [5]		FRACTIONS .XX = ±.02 [.5]		Website: www.Pasternack.com		INTERPRET ALL DIMENSIONS AND TOLERANCES PER ASME Y14.5	
.XXX = ±.005 [.13]		ANGLES ±1°		Phone: 1.866.727.8376 1.949.261.1920		SCALE NONE	
CABLE LENGTH TOLERANCES:		≤12 [305] = ±.1 [25] / -0		DESCRIPTION		SHEET 1 OF 1	
>12 [305] ≤ 60 [1524] = ±.2 [5] / -0		>60 [1524] ≤ 120 [3048] = ±.4 [102] / -0		4 CELLULAR, 1 GPS COMBINATION ANTENNA SMA MALE CONNECTORS BLACK			
>120 [3048] ≤ 300 [7620] = ±.6 [152] / -0		>300 [7620] = ±.8% / -0		SIZE		REV	
ALL DIMENSIONS ARE FOR REFERENCE ONLY AND SUBJECT TO CHANGE WITHOUT NOTICE				A 53919		A	
				DRAWN BY		ITEM NO.	
				KGLEBOVA		PEANOM1102	