



400-520 MHz Rubber Duck Antenna, 2.15 dBi gain,
SMA Female Connector, Vertical Polarization

Antennas Technical Data Sheet

PEANRBD1014

Features

- 400 MHz to 520 MHz, 2.15 dBi Gain
- SMA-Female connector
- Heliflex whip antenna
- Plug and play
- 50W power handling
- VSWR < 1.5:1
- Vertical polarization
- Black

Applications

- PtP or PtMP applications
- Trunking for two-way radio comms
- UHF applications
- Public Safety / Emergency services
- Tetra and P-25 applications exclusively supported
- Land and Private mobile radio (LMR) (PMR)
- Fixed and mobile services

Description

Vertical polarized antenna PEANRBD1014 from Pasternack is part of our extensive in-stock omni directional antennas that ship the same day from our ISO 9001:2015 certified facility. The antenna with 400 to 520 MHz frequency range has a maximum input VSWR of 1.5:1. This omni directional antenna has SMA female connector.

This antenna has a black radome made of TPE, an overall length of 3.14 in, width of 0.50 in, and weighs 0.022 lbs. Pasternack's PEANRBD1014 is a single band antenna operating from 400 to 520 MHz with 2.15 dBi gain.

Pasternack's experts are on hand to assist you with any inquiries. Order this PEANRBD1014 antenna 7 days a week, 24 hours a day using our on-line ordering system with no MOQs (minimum order quantity) and same-day shipping.

Configuration

Design	Rubber Duck
Band Type	Single
Radiation Pattern	Omni Directional
Polarization	Vertical
Connector Type	SMA Female

Electrical Specifications

Description	Minimum	Typical	Maximum	Units
Frequency Range	400		520	MHz
Input VSWR			1.5:1	
Impedance		50		Ohms
Gain		2.15		dBi
Input Power			50	Watts

Click the following link (or enter part number in "SEARCH" on website) to obtain additional part information including price, inventory and certifications: [400-520 MHz Rubber Duck Antenna, 2.15 dBi gain, SMA Female Connector, Vertical Polarization PEANRBD1014](#)



400-520 MHz Rubber Duck Antenna, 2.15 dBi gain,
SMA Female Connector, Vertical Polarization

Antennas Technical Data Sheet

PEANRBD1014

Mechanical Specifications

Radome Material

TPE

Size

Overall Length

3.14 in [79.76 mm]

Width

0.5 in [12.7 mm]

Height

0.5 in [12.7 mm]

Weight

0.022 lbs [9.98 g]

Environmental Specifications

Temperature

Operating Range

-40 to +80 deg C

Compliance Certifications (see [product page](#) for current document)

Plotted and Other Data

Notes:

400-520 MHz Rubber Duck Antenna, 2.15 dBi gain, SMA Female Connector, Vertical Polarization from Pasternack Enterprises has same day shipment for domestic and International orders. Our RF, microwave and millimeter wave products maintain a 99.4% availability and are part of the broadest selection in the industry.

Click the following link (or enter part number in "SEARCH" on website) to obtain additional part information including price, inventory and certifications: [400-520 MHz Rubber Duck Antenna, 2.15 dBi gain, SMA Female Connector, Vertical Polarization PEANRBD1014](#)

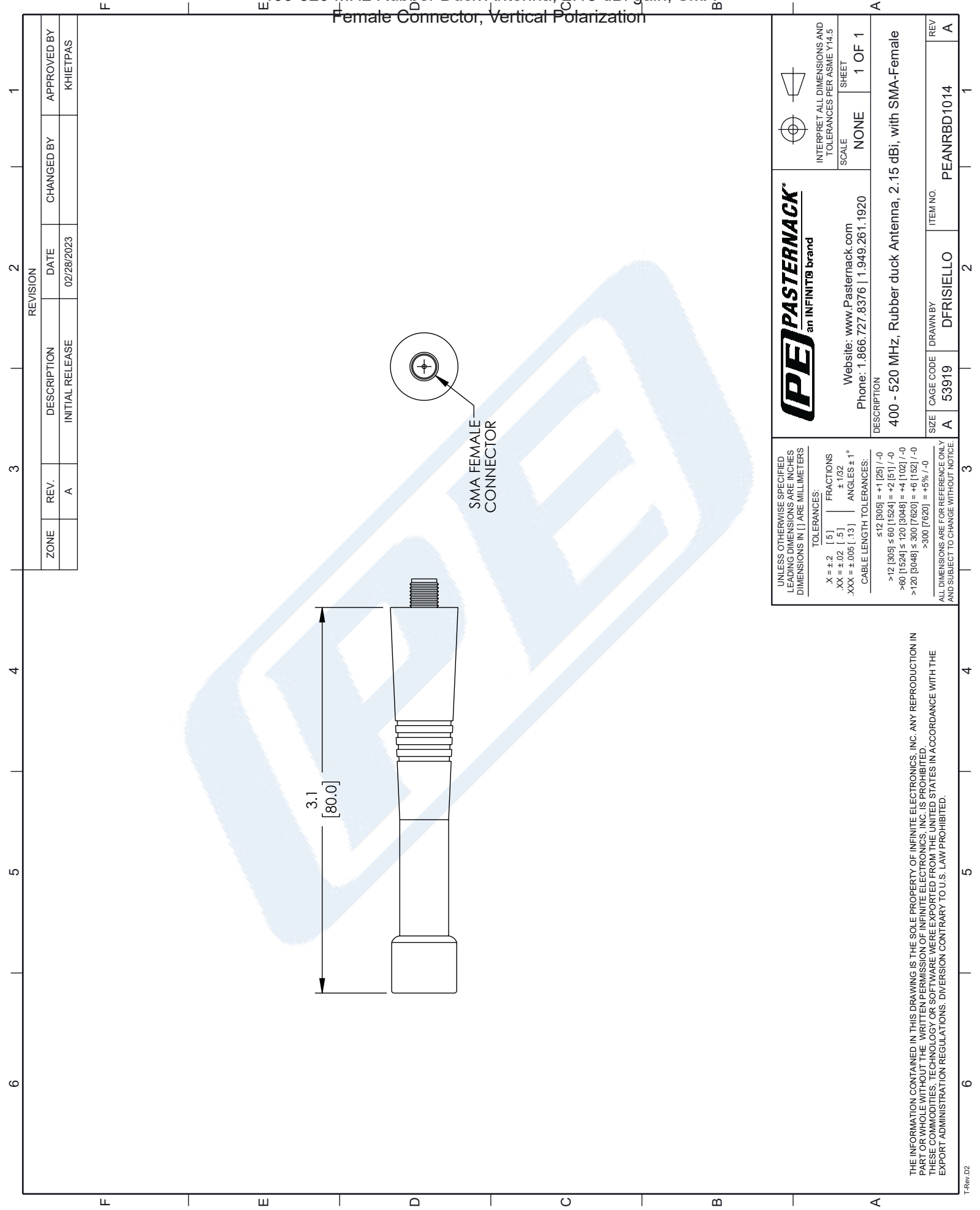
URL: <https://www.pasternack.com/2.15-dbi-rubber-duck-antenna-400-520-mhz-sma-female-connector-peanrbd1014-p.aspx>

The information contained in this document is accurate to the best of our knowledge and representative of the part described herein. It may be necessary to make modifications to the part and/or the documentation of the part, in order to implement improvements. Pasternack reserves the right to make such changes as required. Unless otherwise stated, all specifications are nominal. Pasternack does not make any representation or warranty regarding the suitability of the part described herein for any particular purpose, and Pasternack does not assume any liability arising out of the use of any part or documentation.

PEANRBD1014 CAD Drawing

400-520 MHz Rubber Duck Antenna, 2.15 dBi gain, SMA

Female Connector, Vertical Polarization



REVISION			
ZONE	REV.	DESCRIPTION	DATE
	A	INITIAL RELEASE	02/28/2023
CHANGED BY			APPROVED BY
			KHIETPAS

PE PASTERNAK an INFINITI® brand		Website: www.Pasternack.com Phone: 1.866.727.8376 1.949.261.1920		INTERPRET ALL DIMENSIONS AND TOLERANCES PER ASME Y14.5	
UNLESS OTHERWISE SPECIFIED LEADING DIMENSIONS ARE INCHES DIMENSIONS IN [] ARE MILLIMETERS		TOLERANCES: X = ±.2 [.5] FRACTIONS .XX = ±.02 [.5] ± 1/32 .XXX = ±.005 [.13] ANGLES ± 1°		SCALE NONE	
CABLE LENGTH TOLERANCES: ≤12 [305] = ±1 [25] / -0 >12 [305] ≤ 60 [1524] = +2 [51] / -0 >60 [1524] ≤ 120 [3048] = +4 [102] / -0 >120 [3048] ≤ 300 [7620] = +6 [152] / -0 >300 [7620] = +5% / -0		DESCRIPTION 400 - 520 MHz, Rubber duck Antenna, 2.15 dBi, with SMA-Female		SHEET 1 OF 1	
ALL DIMENSIONS ARE FOR REFERENCE ONLY AND SUBJECT TO CHANGE WITHOUT NOTICE		SIZE CAGE CODE DRAWN BY ITEM NO.		REV	
		A 53919 DFRISIELLO		PEANRBD1014	
				A	

THE INFORMATION CONTAINED IN THIS DRAWING IS THE SOLE PROPERTY OF INFINITE ELECTRONICS, INC. ANY REPRODUCTION IN PART OR WHOLE WITHOUT THE WRITTEN PERMISSION OF INFINITE ELECTRONICS, INC. IS PROHIBITED. THESE COMMODITIES, TECHNOLOGY OR SOFTWARE WERE EXPORTED FROM THE UNITED STATES IN ACCORDANCE WITH THE EXPORT ADMINISTRATION REGULATIONS. DIVERSION CONTRARY TO U.S. LAW PROHIBITED.

T-Rev.D2