



900 MHz to 930 MHz Concave Shaped Antenna,
Monopole, SMA Male Connector, 2 dBi Gain

Antennas Technical Data Sheet

PEANRBD1041

Features

- 900-930 MHz, 2 dBi Gain
- SMA male connector
- Plug and play
- VSWR < 2:1
- Linear polarization
- Monopole antenna

Applications

- Public Safety, security, construction sites
- IOT sensors and trackers
- Wireless communications
- Remote control
- Industrial monitoring and tracking
- Amateur radio
- RFID applications
- Asset tracking and management
- Wireless metering and paging systems

Description

The Pasternack PEANRBD1041 antenna is an omni antenna operating from 900 MHz to 930 MHz with 2 dBi gain. Our high-quality rubber duck antenna transmits high power signals, increasing the signal strength, thus providing improved coverage, better broadcast control, and faster speed. The SMA male connector on this monopole antenna enables it to be used vertically or at any angle in between.

This PEANRBD1041 concave shaped antenna is 0.55 inches wide, 3.82 inches long, and 0.55 inches tall. Pasternack's omnidirectional antenna has a maximum input VSWR of 2:1, which results in the best power transfer and reduced losses. This omnidirectional antenna has a linear polarization, an SMA male connector, and an TPEE/ABS radome material. Our black antenna functions between -40 to 65 degrees C and has 50 Ohm impedance.

The Pasternack antenna is ideal for public safety, security, construction, wireless communications, RFID, asset tracking, inventory management, wireless metering systems, wireless paging systems, industrial monitoring and data transmission, remote control, and amateur radio. This monopole antenna has a sturdy design and a high power handling capacity. The PEANRBD1041 single-band antenna has a gain of 2 dBi for the 900 MHz to 930 MHz frequency range.

This 2 dBi gain omni directional antenna is one of the thousands of products available from Pasternack's in-stock inventory with same business day shipment for local, domestic, and international orders. Make your online purchase for our high-quality antennas and take advantage of the same business day shipping services. For further information on similar products, our expert technical support and knowledgeable sales team can help you get the perfect 900 MHz to 930 MHz antenna for your requirement.

Configuration

Design	Rubber Duck
Band Type	Single
Radiation Pattern	Omni Directional
Polarization	Linear
Connector Type	SMA Male

Electrical Specifications

Description	Minimum	Typical	Maximum	Units
Frequency Range	900		930	MHz
Input VSWR			2:1	
Impedance		50		Ohms

Click the following link (or enter part number in "SEARCH" on website) to obtain additional part information including price, inventory and certifications: [900 MHz to 930 MHz Concave Shaped Antenna, Monopole, SMA Male Connector, 2 dBi Gain PEANRBD1041](#)



900 MHz to 930 MHz Concave Shaped Antenna,
Monopole, SMA Male Connector, 2 dBi Gain

Antennas Technical Data Sheet

PEANRBD1041

Gain	0	1	dBi
Input Power		10	Watts

Mechanical Specifications

Radome Material	TPEE/ABS
Size	
Overall Length	3.82 in [97.03 mm]
Width	0.55 in [13.97 mm]
Height	0.55 in [13.97 mm]
Weight	0.0242 lbs [10.98 g]

Environmental Specifications

Temperature	
Operating Range	-40 to +65 deg C
Storage Range	-40 to +80 deg C
Environment	
Ingress Protection	Waterproof IPx7

Compliance Certifications (see [product page](#) for current document)

Plotted and Other Data

Notes:

900 MHz to 930 MHz Concave Shaped Antenna, Monopole, SMA Male Connector, 2 dBi Gain from Pasternack Enterprises has same day shipment for domestic and International orders. Our RF, microwave and millimeter wave products maintain a 99.4% availability and are part of the broadest selection in the industry.

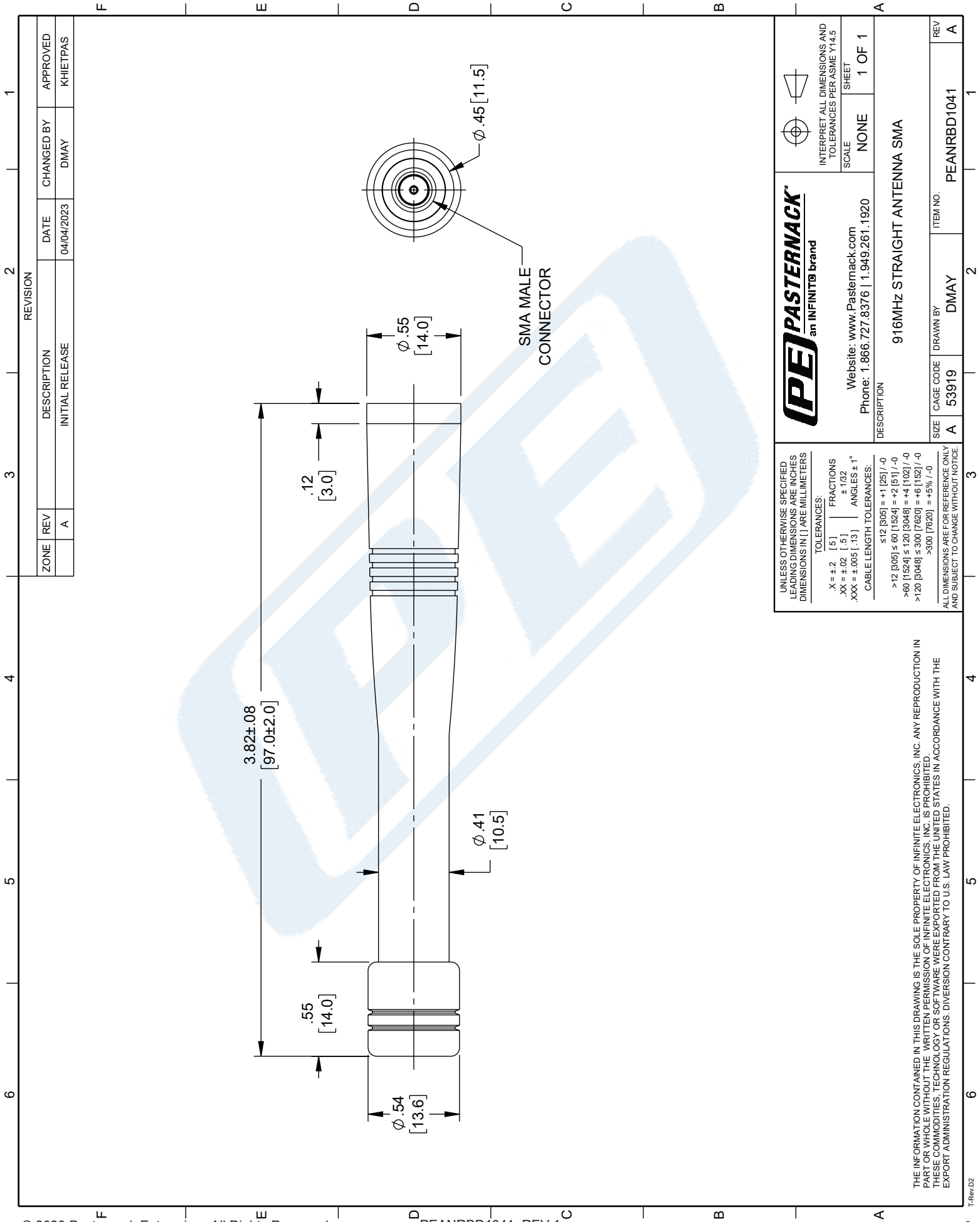
Click the following link (or enter part number in "SEARCH" on website) to obtain additional part information including price, inventory and certifications: [900 MHz to 930 MHz Concave Shaped Antenna, Monopole, SMA Male Connector, 2 dBi Gain PEANRBD1041](#)

URL:

The information contained in this document is accurate to the best of our knowledge and representative of the part described herein. It may be necessary to make modifications to the part and/or the documentation of the part, in order to implement improvements. Pasternack reserves the right to make such changes as required. Unless otherwise stated, all specifications are nominal. Pasternack does not make any representation or warranty regarding the suitability of the part described herein for any particular purpose, and Pasternack does not assume any liability arising out of the use of any part or documentation.

PEANRBD1041 CAD Drawing

900 MHz to 930 MHz Concave Shaped Antenna,
Monopole, SMA Male Connector, 2 dBi Gain



 PASTERNAK an INFINITO brand		 INTERPRET ALL DIMENSIONS AND TOLERANCES PER ASME Y14.5	
Website: www.Pasternack.com Phone: 1.866.727.8376 1.949.261.1920		SCALE NONE	SHEET 1 OF 1
DESCRIPTION 916MHz STRAIGHT ANTENNA SMA			
SIZE A	CAGE CODE 53919	DRAWN BY DMAY	ITEM NO. PEANRBD1041
REV			A