



2.4 GHz to 2.5 GHz Stubby Antenna, Monopole,  
90-degree angle, SMA Male Connector, 2 dBi Gain

## Antennas Technical Data Sheet

**PEANRBD1044**

### Features

- 2400-2500 MHz, 2 dBi Gain
- 90-degree SMA male connector
- Plug and play
- VSWR < 2:1
- Linear polarization
- Monopole antenna

### Applications

- 2.4 GHz Wi-Fi and ISM applications
- WLAN applications
- IOT, Wireless audio/video systems
- Home automation
- Telemetry, remote monitoring
- Wireless data acquisition
- 802.11 b/g/n, wireless hotspots
- PtP and PtMP applications
- 5G Band: n53

### Description

The Pasternack PEANRBD1044 WiFi antenna is an omni antenna operating from 2.4 GHz to 2.5 GHz with 2 dBi gain. Our high-quality rubber duck antenna transmits high power signals, increasing the signal strength, thus providing improved coverage, better broadcast control, and faster speed. The SMA male connector on this monopole antenna enables it to be used vertically, at a right angle, or at any angle in between.

This PEANRBD1044 stubby WiFi antenna is 0.37 inches wide, 2.01 inches long, and 0.37 inches tall. Pasternack's omnidirectional antenna has a maximum input VSWR of 2:1, which results in the best power transfer and reduced losses. This omnidirectional antenna has a linear polarization, an SMA male connector, and an ABS radome material. Our black WiFi antenna functions between -40 to 65 degrees C and has 50 Ohm impedance.

The Pasternack WiFi antenna is ideal for 2.4 GHz Wi-Fi and ISM applications, WLAN, Bluetooth, IOT, wireless audio systems, home automation, telemetry, remote monitoring, wireless data acquisition, 802.11 a/b/g/n/ax, wireless hotspots. This monopole antenna has a waterproof design, a high power handling capacity, and IP65 ingress protection rating. The PEANRBD1044 single-band antenna has a gain of 2 dBi for the 2.4 GHz to 2.5 GHz frequency range.

This 2 dBi gain omni directional antenna is one of the thousands of products available from Pasternack's in-stock inventory with same business day shipment for local, domestic, and international orders. Make your online purchase for our high-quality antennas and take advantage of the same business day shipping services. For further information on similar products, our expert technical support and knowledgeable sales team can help you get the perfect 2.4 GHz to 2.5 GHz antenna for your requirement.

### Configuration

Design	Rubber Duck
Band Type	Single
Radiation Pattern	Omni Directional
Polarization	Linear
Connector Type	SMA Male

### Electrical Specifications

Description	Minimum	Typical	Maximum	Units
Frequency Range	2,400		2,500	MHz
Input VSWR			2:1	
Impedance		50		Ohms

Click the following link (or enter part number in "SEARCH" on website) to obtain additional part information including price, inventory and certifications: [2.4 GHz to 2.5 GHz Stubby Antenna, Monopole, 90-degree angle, SMA Male Connector, 2 dBi Gain PEANRBD1044](#)



2.4 GHz to 2.5 GHz Stubby Antenna, Monopole,  
 90-degree angle, SMA Male Connector, 2 dBi Gain

## Antennas Technical Data Sheet

**PEANRBD1044**

Gain	2	dBi
Input Power	10	Watts

### Mechanical Specifications

Radome Material	ABS
<b>Size</b>	
Overall Length	2.01 in [51.05 mm]
Width	0.37 in [9.4 mm]
Height	0.37 in [9.4 mm]
Weight	0.0154 lbs [6.99 g]

### Environmental Specifications

<b>Temperature</b>	
Operating Range	-40 to +65 deg C
Storage Range	-40 to +80 deg C
<b>Environment</b>	Waterproof
Ingress Protection	IP65

**Compliance Certifications** (see [product page](#) for current document)

### Plotted and Other Data

Notes:

2.4 GHz to 2.5 GHz Stubby Antenna, Monopole, 90-degree angle, SMA Male Connector, 2 dBi Gain from Pasternack Enterprises has same day shipment for domestic and International orders. Our RF, microwave and millimeter wave products maintain a 99.4% availability and are part of the broadest selection in the industry.

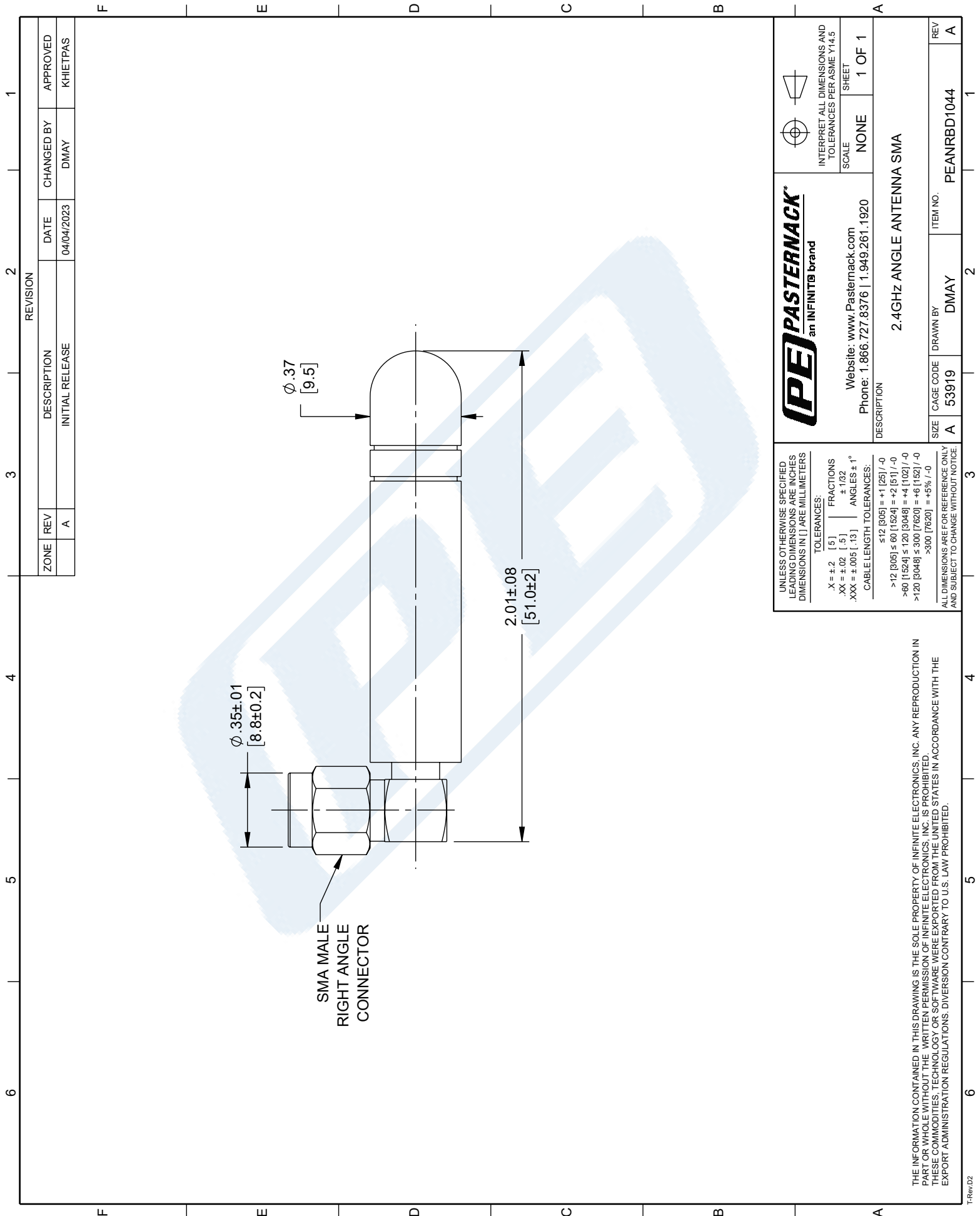
Click the following link (or enter part number in "SEARCH" on website) to obtain additional part information including price, inventory and certifications: [2.4 GHz to 2.5 GHz Stubby Antenna, Monopole, 90-degree angle, SMA Male Connector, 2 dBi Gain PEANRBD1044](#)

URL:

The information contained in this document is accurate to the best of our knowledge and representative of the part described herein. It may be necessary to make modifications to the part and/or the documentation of the part, in order to implement improvements. Pasternack reserves the right to make such changes as required. Unless otherwise stated, all specifications are nominal. Pasternack does not make any representation or warranty regarding the suitability of the part described herein for any particular purpose, and Pasternack does not assume any liability arising out of the use of any part or documentation.

PEANRBD1044 CAD Drawing

2.4 GHz to 2.5 GHz Stubby Antenna, Monopole,  
90-degree angle, SMA Male Connector, 2 dBi Gain



6		5		4		3		2		1	
						REVISION					
ZONE		REV		DESCRIPTION		DATE		CHANGED BY		APPROVED	
		A		INITIAL RELEASE		04/04/2023		DMAY		KHIETPAS	

2.4GHz ANGLE ANTENNA SMA

Ø .35±.01  
[8.8±0.2]

SMA MALE  
RIGHT ANGLE  
CONNECTOR

Ø .37  
[9.5]

2.01±.08  
[51.0±2]

UNLESS OTHERWISE SPECIFIED  
LEADING DIMENSIONS ARE INCHES  
DIMENSIONS IN [ ] ARE MILLIMETERS

TOLERANCES:

.X = ±.2	[5]	FRACTIONS
.XX = ±.02	[.5]	± 1/32
.XXX = ±.005	[.13]	ANGLES ± 1°

CABLE LENGTH TOLERANCES:

≤12 [305]	= +1 [25] / -0
>12 [305] ≤ 60 [1524]	= +2 [51] / -0
>60 [1524] ≤ 120 [3048]	= +4 [102] / -0
>120 [3048] ≤ 300 [7620]	= +6 [152] / -0
>300 [7620]	= +5% / -0

ALL DIMENSIONS ARE FOR REFERENCE ONLY  
AND SUBJECT TO CHANGE WITHOUT NOTICE.

THE INFORMATION CONTAINED IN THIS DRAWING IS THE SOLE PROPERTY OF INFINITE ELECTRONICS, INC. ANY REPRODUCTION IN PART OR WHOLE WITHOUT THE WRITTEN PERMISSION OF INFINITE ELECTRONICS, INC. IS PROHIBITED. THESE COMMODITIES, TECHNOLOGY OR SOFTWARE WERE EXPORTED FROM THE UNITED STATES IN ACCORDANCE WITH THE EXPORT ADMINISTRATION REGULATIONS. DIVERSION CONTRARY TO U.S. LAW PROHIBITED.

**PE PASTERNAK**  
an INFINITO brand

Website: [www.Pasternack.com](http://www.Pasternack.com)  
Phone: 1.866.727.8376 | 1.949.261.1920

INTERPRET ALL DIMENSIONS AND  
TOLERANCES PER ASME Y14.5

SCALE: NONE SHEET: 1 OF 1

DESCRIPTION

2.4GHz ANGLE ANTENNA SMA

SIZE	CAGE CODE	DRAWN BY	ITEM NO.
A	53919	DMAY	PEANRBD1044

T:Rev.02