



Marine Base mount - Stainless Steel - Pedestal Type

TECHNICAL DATA SHEET

PEMARBM

Features

- Stainless steel marine grade mount
- Pedestal style mount
- 1"-14 female threaded
- Heavy duty
- Mirror polish
- Anti corrosion material
- Flat base fixture

Applications

- Marine antenna mounts
- Marine communication: VHF, GPS, satellite phones
- Navigation: Radar, sonar, depth finders
- Fishing: Fish finders, sonar-based equipment
- Entertainment: Satellite TV, radio systems
- Emergency services: Search and rescue operations

Description

The Pasternack PEMARBM pedestal style antenna mount is offered for marine and omnidirectional antennas. This marine antenna mount is constructed of anti-corrosion stainless steel with a mirror polish. Our heavy-duty mount is ideal for marine communication, fishing, navigation, entertainment, and emergency services.

The working temperature range for our pedestal-style installation is -40 to 80 degrees Celsius. The PEMARBM marine antenna mount from Pasternack is available in 6.7-inch length, 2.72-inch width, and 2.72-inch height. This antenna mount has a flat base fixture and 1"-14 female threads, making it suited for use with search and rescue equipment, satellite TV, radio systems, radar, sonar, depth finders, VHF, GPS, satellite phones, fish finders, and sonar-based equipment applications.

Pasternack has one of the largest in-stock selections of marine grade pedestal style antenna mounts for international and domestic orders. Make your online purchase right now to take advantage of our same-day shipping. For further information on similar products, our expert technical support and knowledgeable sales team can help you get the perfect stainless steel marine antenna mount for your requirements.

Mechanical Specifications

Size	
Length	6.7 in [170.18 mm]
Width	2.72 in [69.09 mm]
Height	2.72 in [69.09 mm]
Weight	1.14 lbs [517.1 g]

Environmental Specifications

Operating Temperature, Min	-40 deg C
Operating Temperature, Max	80 deg C
Material	Stainless Steel

Click the following link (or enter part number in "SEARCH" on website) to obtain additional part information including price, inventory and certifications: [Marine Base mount - Stainless Steel - Pedestal Type](#)



Marine Base mount - Stainless Steel - Pedestal Type

TECHNICAL DATA SHEET

PEMARBM

Marine Base mount - Stainless Steel - Pedestal Type from Pasternack Enterprises has same day shipment for domestic and International orders. Our RF, microwave and millimeter wave products maintain a 99.4% availability and are part of the broadest selection in the industry.

Click the following link (or enter part number in "SEARCH" on website) to obtain additional part information including price, inventory and certifications: [Marine Base mount - Stainless Steel - Pedestal Type](#)

URL:

The information contained in this document is accurate to the best of our knowledge and representative of the part described herein. It may be necessary to make modifications to the part and/or the documentation of the part, in order to implement improvements. Pasternack reserves the right to make such changes as required. Unless otherwise stated, all specifications are nominal. Pasternack does not make any representation or warranty regarding the suitability of the part described herein for any particular purpose, and Pasternack does not assume any liability arising out of the use of any part or documentation.

CAD Drawing

Marine Base mount - Stainless Steel - Pedestal Type

F E D C B A

F E D C B A

1

2

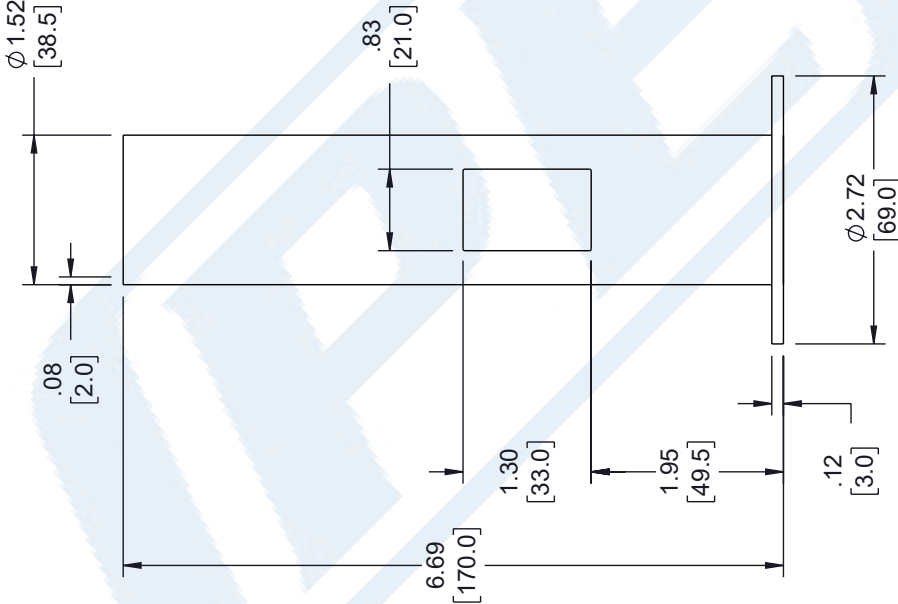
3

4

5

6

REVISION			
ZONE	REV	DESCRIPTION	DATE
	A	INITIAL RELEASE	02/17/2023
		CHANGED BY	HBAKKE
		APPROVED	KHIETPAS



Website: www.Pasternack.com
Phone: 1.866.727.8376 | 1.949.261.1920



INTERPRET ALL DIMENSIONS AND TOLERANCES PER ASME Y14.5
SCALE NONE
SHEET 1 OF 1

DESCRIPTION
Marine Base mount - Stainless Steel - Pedestal Type

UNLESS OTHERWISE SPECIFIED LEADING DIMENSIONS ARE INCHES DIMENSIONS IN [] ARE MILLIMETERS			
TOLERANCES:		FRACTIONS	
X = ±.2	[.5]		
.XX = ±.02	[.5]		± 1/32
.XXX = ±.005	[.13]		ANGLES ± 1°
CABLE LENGTH TOLERANCES:			
≤12 [305]		= +1 [25] / -0	
>12 [305] ≤ 60 [1524]		= +2 [51] / -0	
>60 [1524] ≤ 120 [3048]		= +4 [102] / -0	
>120 [3048] ≤ 300 [7620]		= +6 [152] / -0	
>300 [7620]		= +5% / -0	
ALL DIMENSIONS ARE FOR REFERENCE ONLY AND SUBJECT TO CHANGE WITHOUT NOTICE			

THE INFORMATION CONTAINED IN THIS DRAWING IS THE SOLE PROPERTY OF INFINITE ELECTRONICS, INC. ANY REPRODUCTION IN PART OR WHOLE WITHOUT THE WRITTEN PERMISSION OF INFINITE ELECTRONICS, INC. IS PROHIBITED. THESE COMMODITIES, TECHNOLOGY OR SOFTWARE WERE EXPORTED FROM THE UNITED STATES IN ACCORDANCE WITH THE EXPORT ADMINISTRATION REGULATIONS. DIVERSION CONTRARY TO U.S. LAW PROHIBITED.

T-Rev.D2