

2400-2500 MHz, 3.3 dBi, Stamped Metal AP/Router Embedded Antenna With IPEX Connector

Antennas Technical Data Sheet

PESMA1003

Features

- High Efficiency
- Isotropic radiation patterns
- Linear polarization
- Ultra-Compact design
- Low loss material
- Extended operating temperatures
- Case mounting or on board mount
- Frequency stabilization
- IPEX connector - 40mm cable
- Single piece for easy buy

Applications

- IoT, M2M, Telemetry
- Wireless Remote Control
- Personal Area Networks(PAN)
- Industrial/Commercial Equipment
- 2.4/5 GHz - Wi-Fi/BT/BLE/ZigBee/ISM applications
- IEEE802.11a/b/g/n/ac embedded applications
- Remote Technology / Monitoring
- Consumer Tracking
- Smart Home / Wearables / Devices
- Agriculture, healthcare, digital signage

Description

Linear polarized antenna PESMA1003 from Pasternack is part of our extensive in-stock omni directional antennas that ship the same day from our ISO 9001:2015 certified facility. The stamped metal antenna has a maximum frequency of 2500 MHz and a minimum frequency of 2400 MHz. This stamped metal antenna with an IPEX connector has a maximum input VSWR of 2:1.

This stamped metal antenna with an IPEX connector has an overall length of 1.13 inches and a width of 0.15 inches. Pasternack's PESMA1003 is a single band antenna operating from 2400 to 2500 MHz with a 3.3 dBi gain. Our high-quality omni directional antenna has an impedance of 50 Ohms.

Pasternack's experts are on hand to assist you with any inquiries. Order this PESMA1003 stamped metal antenna 7 days a week, 24 hours a day, using our on-line ordering system with no MOQs (minimum order quantity) and same-day shipping. Our knowledgeable sales team and ability in the global availability market allow us to lead the industry in supplying RF products like these omni directional antennas.

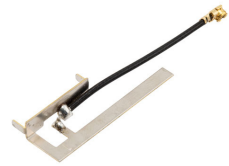
Configuration

Design	Stamped Metal
Band Type	Single
Radiation Pattern	Omni Directional
Polarization	Linear
Cable Length	1.58 in [40.13 mm]
Connector Type	IPEX
Number of Ports	1

Electrical Specifications

Description	Minimum	Typical	Maximum	Units
Frequency Range	2,400		2,500	MHz
Input VSWR			2:1	
Impedance		50		Ohms
Gain		3.3		dBi
Input Power			1	Watt

Click the following link (or enter part number in "SEARCH" on website) to obtain additional part information including price, inventory and certifications: [2400-2500 MHz, 3.3 dBi, Stamped Metal AP/Router Embedded Antenna With IPEX Connector PESMA1003](#)



2400-2500 MHz, 3.3 dBi, Stamped Metal AP/Router
Embedded Antenna With IPEX Connector

Antennas Technical Data Sheet

PESMA1003

Mechanical Specifications

Size

Overall Length	1.13 in [28.7 mm]
Width	0.15 in [3.81 mm]
Height	0.43 in [10.92 mm]

Environmental Specifications

Temperature

Operating Range	-40 to +85 deg C
-----------------	------------------

Compliance Certifications (see [product page](#) for current document)

Plotted and Other Data

Notes:

2400-2500 MHz, 3.3 dBi, Stamped Metal AP/Router Embedded Antenna With IPEX Connector from Pasternack Enterprises has same day shipment for domestic and International orders. Our RF, microwave and millimeter wave products maintain a 99.4% availability and are part of the broadest selection in the industry.

Click the following link (or enter part number in "SEARCH" on website) to obtain additional part information including price, inventory and certifications: [2400-2500 MHz, 3.3 dBi, Stamped Metal AP/Router Embedded Antenna With IPEX Connector PESMA1003](#)

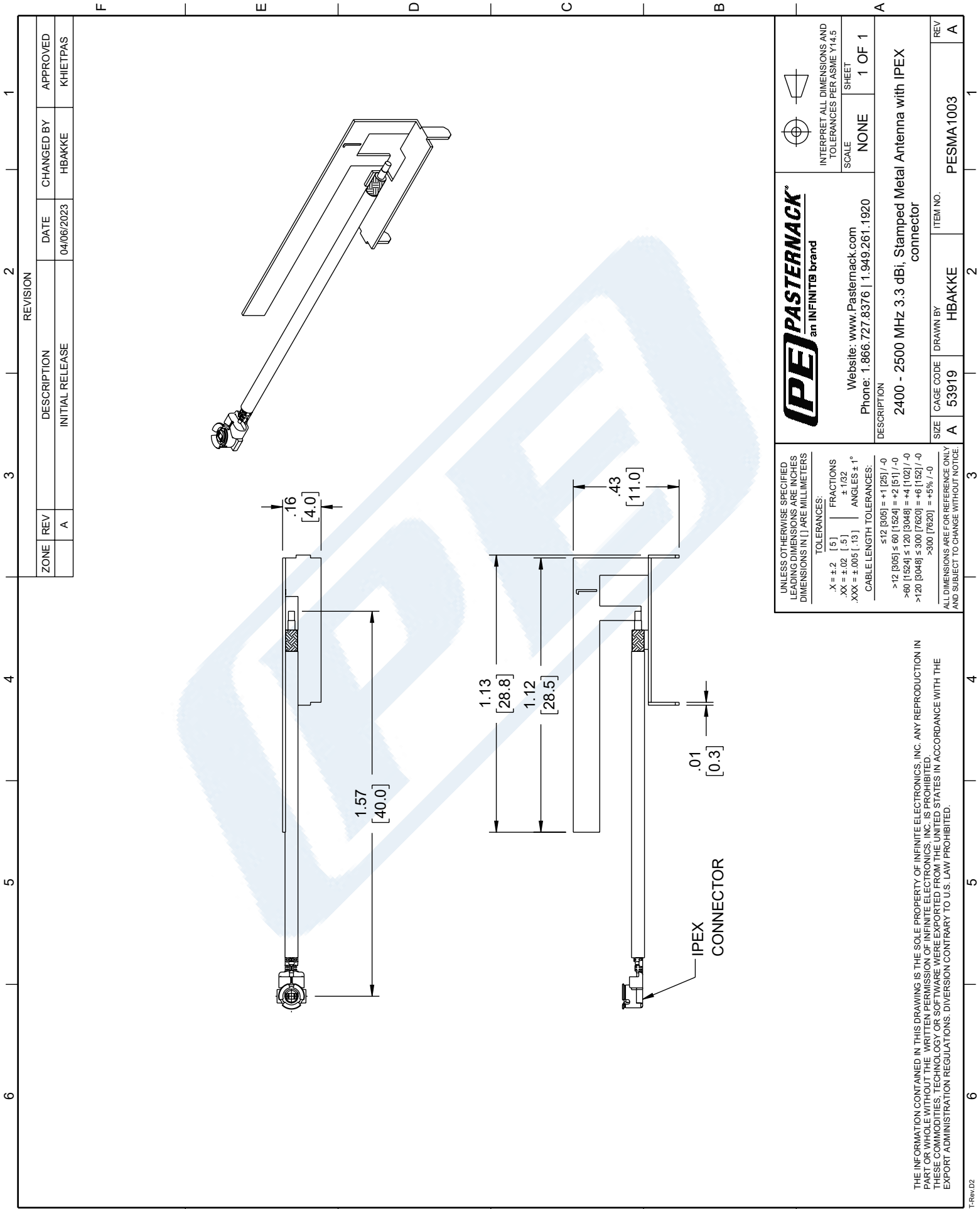
URL: <https://www.pasternack.com/3.3-stamped-metal-antenna-2400-2500-mhz-invalid-alias-lookup-for-ipex-connector-pesma1003-p.aspx>



The information contained in this document is accurate to the best of our knowledge and representative of the part described herein. It may be necessary to make modifications to the part and/or the documentation of the part, in order to implement improvements. Pasternack reserves the right to make such changes as required. Unless otherwise stated, all specifications are nominal. Pasternack does not make any representation or warranty regarding the suitability of the part described herein for any particular purpose, and Pasternack does not assume any liability arising out of the use of any part or documentation.

PESMA1003 CAD Drawing

2400-2500 MHz, 3.3 dBi, Stamped Metal AP/Router

Embedded Antenna With IPEX Connector



<div><div>PASTERNAK® an INFINITO brand</div></div>		<div></div>		INTERPRET ALL DIMENSIONS AND TOLERANCES PER ASME Y14.5	
UNLESS OTHERWISE SPECIFIED, LEADING DIMENSIONS ARE INCHES DIMENSIONS IN [] ARE MILLIMETERS		WEBSITE: www.Pasternack.com PHONE: 1.866.727.8376 1.949.261.1920		SCALE	SHEET
TOLERANCES:		CABLE LENGTH TOLERANCES:		NONE	1 OF 1
X = ±.2 [.5] FRACTIONS .XX = ±.02 [.5] ANGLES ±° .XXX = ±.005 [.13] ANGLES ±°		CABLE LENGTH TOLERANCES: ≤12 [305] = +1 [25] / -0 >12 [305] ≤ 60 [1524] = +2 [51] / -0 >60 [1524] ≤ 120 [3048] = +4 [102] / -0 >120 [3048] ≤ 300 [7620] = +6 [152] / -0 >300 [7620] = +5% / -0		DESCRIPTION 2400 - 2500 MHz 3.3 dBi, Stamped Metal Antenna with IPEX connector	
SIZE	CAGE CODE	DRAWN BY	ITEM NO.	REV	
A	53919	HBAKKE	PESMA1003	A	
ALL DIMENSIONS ARE FOR REFERENCE ONLY AND SUBJECT TO CHANGE WITHOUT NOTICE.					

UNLESS OTHERWISE SPECIFIED
LEADING DIMENSIONS ARE INCHES
DIMENSIONS IN [] ARE MILLIMETERS

TOLERANCES:

X = ±.2	[.5]	FRACTIONS	±.132
.XX = ±.02	[.5]	ANGLES ± 1°	
XXX = ±.005	[.13]	CABLE LENGTH TOLERANCES:	

≤12 [305] = +1 [25] / -0
>12 [305] ≤ 60 [1524] = +2 [51] / -0
>60 [1524] ≤ 120 [3048] = +4 [102] / -0
>120 [3048] ≤ 300 [7620] = +6 [152] / -0
>300 [7620] = +5% / -0

ALL DIMENSIONS ARE FOR REFERENCE ONLY
AND SUBJECT TO CHANGE WITHOUT NOTICE.

THE INFORMATION CONTAINED IN THIS DRAWING IS THE SOLE PROPERTY OF INFINITE ELECTRONICS, INC. ANY REPRODUCTION IN PART OR WHOLE WITHOUT THE WRITTEN PERMISSION OF INFINITE ELECTRONICS, INC. IS PROHIBITED.
THESE COMMODITIES, TECHNOLOGY OR SOFTWARE WERE EXPORTED FROM THE UNITED STATES IN ACCORDANCE WITH THE EXPORT ADMINISTRATION REGULATIONS. DIVERSION CONTRARY TO U.S. LAW PROHIBITED.