

2400-2500/ 5150-5825 MHz, 4.8/3.7 dBi, Stamped Metal AP/Router Embedded Antenna With IPEX Connector

Antennas Technical Data Sheet

PESMA1018

Features

- High Efficiency
- Isotropic radiation patterns
- Linear polarization
- Ultra Compact design
- Low loss material
- Extended operating temperatures
- Case mounting or on board mount
- Dual band frequency stabilization
- IPEX connector - 380mm cable
- Single piece for easy buy

Applications

- IoT, M2M, Telemetry
- Wireless Remote Control
- Personal Area Networks (PAN)
- Industrial/Commercial Equipment
- 2.4/5 GHz - Wi-Fi/BT/BLE/ZigBee/ISM applications
- IEEE 802.11 a/b/g/n/ac/ax embedded applications
- Remote Technology / Monitoring
- Consumer Tracking
- Smart Home / Wearables / Devices
- Agriculture, healthcare, digital signage

Description

Linear polarized antenna PESMA1018 from Pasternack is part of our extensive in-stock omni directional antennas that ship the same day from our ISO 9001:2015 certified facility. The stamped metal antenna with an IPEX connector has a maximum frequency of 5825 MHz and a minimum frequency of 2400 MHz. This stamped metal antenna has a maximum input VSWR of 2:1.

This stamped metal antenna with an IPEX connector has an overall length of 1.27 inches and a width of 0.21 inches. Pasternack's PESMA1018 is a dual band antenna operating from 2400 to 2500 MHz with 4.8 dBi gain and 5150 to 5825 MHz with 3.7 dBi gain. Our high-quality omni directional antenna has an impedance of 50 Ohms.

Pasternack's experts are on hand to assist you with any inquiries. Order this PESMA1018 stamped metal antenna 7 days a week, 24 hours a day, using our on-line ordering system with no MOQs (minimum order quantity) and same-day shipping. Our knowledgeable sales team and ability in the global availability market allow us to lead the industry in supplying RF products like these omni directional antennas.

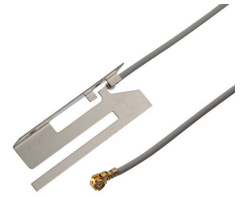
Configuration

Design	Stamped Metal
Band Type	Dual
Radiation Pattern	Omni Directional
Polarization	Linear
Cable Length	14.9 in [378.46 mm]
Connector Type	IPEX
Number of Ports	1

Electrical Specifications

Description	Minimum	Typical	Maximum	Units
Frequency Range	2,400		5,825	MHz
Input VSWR			2:1	
Impedance		50		Ohms
Gain	3.7		4.8	dBi
Input Power			1	Watt

Click the following link (or enter part number in "SEARCH" on website) to obtain additional part information including price, inventory and certifications: [2400-2500/ 5150-5825 MHz, 4.8/3.7 dBi, Stamped Metal AP/Router Embedded Antenna With IPEX Connector PESMA1018](#)



2400-2500/ 5150-5825 MHz, 4.8/3.7 dBi, Stamped Metal
AP/Router Embedded Antenna With IPEX Connector

Antennas Technical Data Sheet

PESMA1018

Specifications by Band

Description	Band 1	Band 2	Band 3	Band 4	Band 5	Units
Range	2.4 to 2.5	5.15 to 5.825				GHz
Gain	4.8	3.7				dBi

Mechanical Specifications

Size

Overall Length	1.27 in [32.26 mm]
Width	0.21 in [5.33 mm]
Height	0.39 in [9.91 mm]

Environmental Specifications

Temperature

Operating Range	-40 to +85 deg C
-----------------	------------------

Compliance Certifications (see [product page](#) for current document)

Plotted and Other Data

Notes:

2400-2500/ 5150-5825 MHz, 4.8/3.7 dBi, Stamped Metal AP/Router Embedded Antenna With IPEX Connector from Pasternack Enterprises has same day shipment for domestic and International orders. Our RF, microwave and millimeter wave products maintain a 99.4% availability and are part of the broadest selection in the industry.

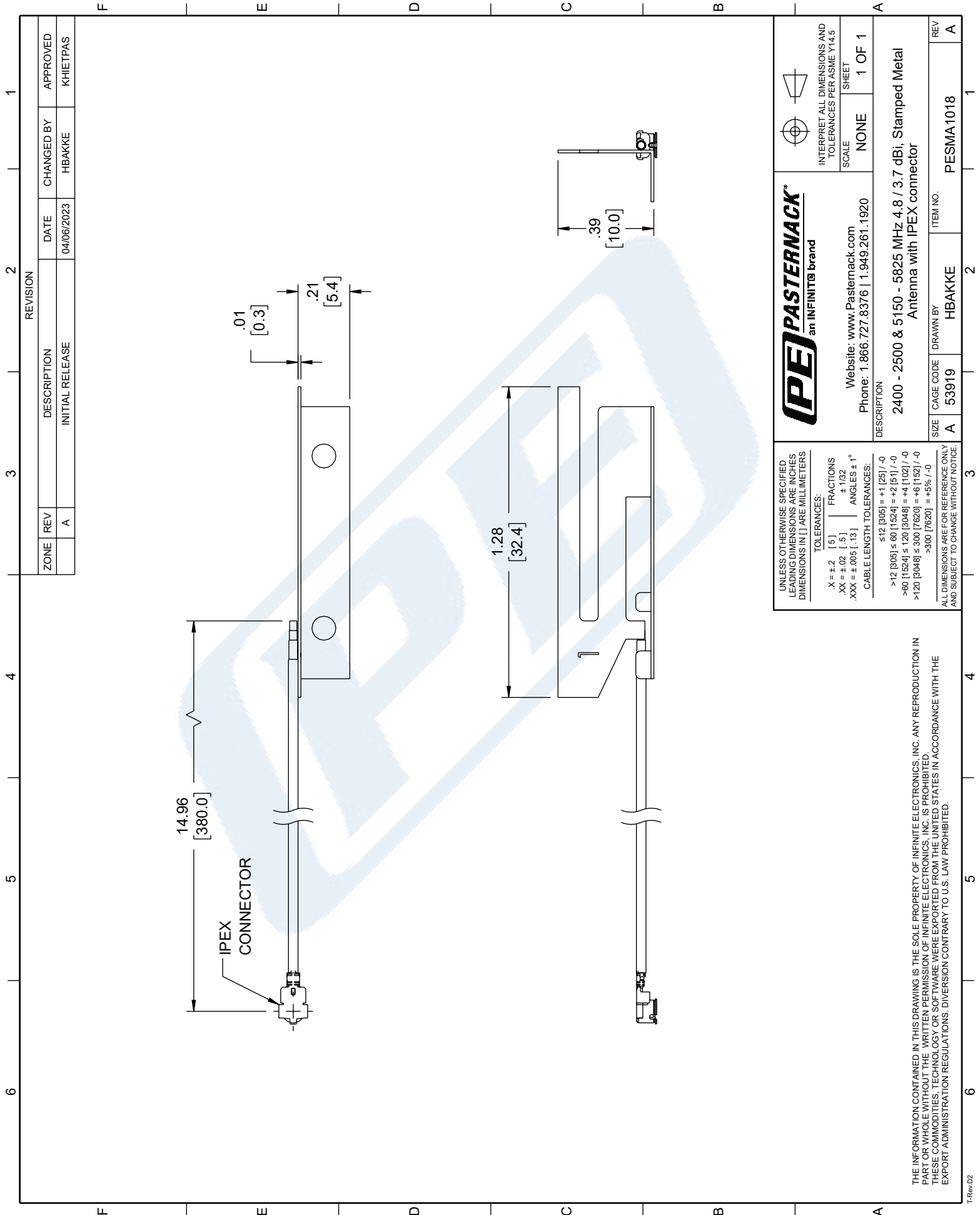
Click the following link (or enter part number in "SEARCH" on website) to obtain additional part information including price, inventory and certifications: [2400-2500/ 5150-5825 MHz, 4.8/3.7 dBi, Stamped Metal AP/Router Embedded Antenna With IPEX Connector PESMA1018](#)

URL: <https://www.pasternack.com/3.7-dual-band-stamped-metal-antenna-2400-5825-mhz-invalid-alias-lookup-for-ipex-connector-pesma1018-p.aspx>

The information contained in this document is accurate to the best of our knowledge and representative of the part described herein. It may be necessary to make modifications to the part and/or the documentation of the part, in order to implement improvements. Pasternack reserves the right to make such changes as required. Unless otherwise stated, all specifications are nominal. Pasternack does not make any representation or warranty regarding the suitability of the part described herein for any particular purpose, and Pasternack does not assume any liability arising out of the use of any part or documentation.

PESMA1018 CAD Drawing

2400-2500/ 5150-5825 MHz, 4.8/3.7 dBi, Stamped Metal AP/
Router Embedded Antenna With IPEX Connector



PASTERNAK
an INFINIT® brand

Website: www.Pasternack.com
Phone: 1.866.727.8376 | 1.949.261.1920

INTERPRET ALL DIMENSIONS AND TOLERANCES PER ASME Y14.5

SCALE: NONE

SHEET: 1 OF 1

DESCRIPTION

2400 - 2500 & 5150 - 5825 MHz 4.8 / 3.7 dBi, Stamped Metal Antenna with IPEX connector

SIZE A

CAGE CODE 53919

DRAWN BY HBAKKE

ITEM NO. PESMA1018

REV A

UNLESS OTHERWISE SPECIFIED LEADING DIMENSIONS ARE INCHES DIMENSIONS IN [] ARE MILLIMETERS

TOLERANCES:

X = ±.2 [5] FRACTIONS
 .XX = ±.02 [.5] ±.132
 .XXX = ±.005 [.13] ANGLES ± 1°

CABLE LENGTH TOLERANCES:

≤12 [305] = +1 [25] / -0
 >12 [305] ≤ 60 [1524] = +2 [51] / -0
 >60 [1524] ≤ 120 [3048] = +4 [102] / -0
 >120 [3048] ≤ 300 [7620] = +6 [152] / -0
 >300 [7620] = +5% / -0

ALL DIMENSIONS ARE FOR REFERENCE ONLY AND SUBJECT TO CHANGE WITHOUT NOTICE.

THE INFORMATION CONTAINED IN THIS DRAWING IS THE SOLE PROPERTY OF INFINITE ELECTRONICS, INC. ANY REPRODUCTION IN PART OR WHOLE WITHOUT THE WRITTEN PERMISSION OF INFINITE ELECTRONICS, INC. IS PROHIBITED. THESE COMMODITIES, TECHNOLOGY OR SOFTWARE WERE EXPORTED FROM THE UNITED STATES IN ACCORDANCE WITH THE EXPORT ADMINISTRATION REGULATIONS. DIVERSION CONTRARY TO U.S. LAW PROHIBITED.