

WR-28 Waveguide 20 dB Broadwall Coupler, UG Grooved Flange,  
2.92mm Female Coupled Port, 26.5 GHz to 40 GHz, Copper

## Waveguide Couplers Technical Data Sheet

**PEW28CP005-20**

The PEW28CP005-20 is a WR-28 Directional Broadwall waveguide coupler with 2.92mm female coupled port that operates in the frequency range of 26.5 to 40 GHz. This Waveguide component has a maximum VSWR of 1.5:1. These designs are made of painted copper alloy and incorporate a broad wall configuration that result in a mid-band nominal coupling value of 10, 20, 30, 40 or 50 dB. Common applications for this component would be where power measurements are required within a system for measuring/sampling power or frequency monitoring with minimal signal loss to the main transmission line. Pasternack offers a complete family of waveguide Crossguide and Broadwall couplers that are in-stock and ship same day.

### Features

- Three Port Broadwall Waveguide Coupler
- 20±0.7 dB Nominal Coupling Level
- Integrated 2.92mm Female Connector coupled port
- 26.5 GHz to 40 GHz Frequency Range
- Main Line VSWR < 1.1:1
- Max Power 100W (CW)

### Applications

- Test Benches
- Radar
- Satellite
- Microwave Radio
- Attenuation Measurements
- Power Measurements
- Source Leveling

### Electrical Specifications

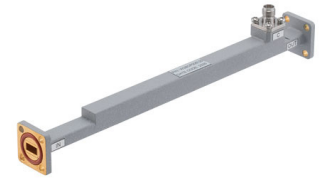
Description	Minimum	Typical	Maximum	Units
Frequency Range	26.5		40	GHz
<b>Coupler</b>				
Nominal Coupling Level		20		dB
Directivity	30			dB
Insertion Loss			0.35	dB
Main Line VSWR			1.1:1	
Secondary Line VSWR			1.5:1	
Coupling Flatness			±0.7	dB
Input Power (CW)			100	Watts
Input Power, Peak			10	kWatts

### Mechanical Specifications

#### Size

Length	6.57 in [166.88 mm]
Width	0.75 in [19.05 mm]
Height	0.75 in [19.05 mm]
Weight	0.605 lbs [274.42 g]
Flange Type	UG Grooved

Click the following link (or enter part number in "SEARCH" on website) to obtain additional part information including price, inventory and certifications: [WR-28 Waveguide 20 dB Broadwall Coupler, UG Grooved Flange, 2.92mm Female Coupled Port, 26.5 GHz to 40 GHz, Copper PEW28CP005-20](#)



WR-28 Waveguide 20 dB Broadwall Coupler, UG Grooved Flange,  
2.92mm Female Coupled Port, 26.5 GHz to 40 GHz, Copper

## Waveguide Couplers Technical Data Sheet

**PEW28CP005-20**

Flange Material and Plating  
RF Connector Type

Copper, Gold  
2.92mm Female

Coupler Body Material and Plating

Copper, Gold

### Environmental Specifications

**Compliance Certifications** (see [product page](#) for current document)

### Plotted and Other Data

Notes:

WR-28 Waveguide 20 dB Broadwall Coupler, UG Grooved Flange, 2.92mm Female Coupled Port, 26.5 GHz to 40 GHz, Copper from Pasternack Enterprises has same day shipment for domestic and International orders. Our RF, microwave and millimeter wave products maintain a 99.4% availability and are part of the broadest selection in the industry.

Click the following link (or enter part number in "SEARCH" on website) to obtain additional part information including price, inventory and certifications: [WR-28 Waveguide 20 dB Broadwall Coupler, UG Grooved Flange, 2.92mm Female Coupled Port, 26.5 GHz to 40 GHz, Copper PEW28CP005-20](#)

URL: <https://www.pasternack.com/wr28-waveguide-20db-broadwall-coupler-ug-40mhz-pew28cp005-20-p.aspx>

The information contained in this document is accurate to the best of our knowledge and representative of the part described herein. It may be necessary to make modifications to the part and/or the documentation of the part, in order to implement improvements. Pasternack reserves the right to make such changes as required. Unless otherwise stated, all specifications are nominal. Pasternack does not make any representation or warranty regarding the suitability of the part described herein for any particular purpose, and Pasternack does not assume any liability arising out of the use of any part or documentation.

# PEW28CP005-20 CAD Drawing

WR-28 Waveguide 20 dB Broadwall Coupler, UG Grooved Flange,  
2.92mm Female Coupled Port, 26.5 GHz to 40 GHz, Copper

