



## WR-62 Waveguide 20 dB Broadwall Coupler, UG Cover Flange, N-Type Female Coupled Port, 11.9 GHz to 18 GHz, Copper

### Waveguide Couplers Technical Data Sheet

**PEW62CP001-20**

The PEW62CP001-20 is a WR-62 Directional Broadwall waveguide coupler with N female coupled port that operates in the frequency range of 11.9 to 18 GHz. This Waveguide component has a maximum VSWR of 1.25:1. These designs are made of painted copper alloy and incorporate a broad wall configuration that result in a mid-band nominal coupling value of 10, 20, 30, 40 or 50 dB. Common applications for this component would be where power measurements are required within a system for measuring/sampling power or frequency monitoring with minimal signal loss to the main transmission line. Pasternack offers a complete family of waveguide Crossguide and Broadwall couplers that are in-stock and ship same day.

#### Features

- Three Port Broadwall Waveguide Coupler
- 20±0.7 dB Nominal Coupling Level
- Integrated N Female Connector coupled port
- 11.9 GHz to 18 GHz Frequency Range
- Main Line VSWR < 1.1:1
- Max Power 200W (CW)

#### Applications

- Test Benches
- Radar
- Satellite
- Microwave Radio
- Attenuation Measurements
- Power Measurements
- Source Leveling

#### Electrical Specifications

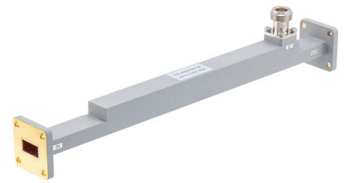
Description	Minimum	Typical	Maximum	Units
Frequency Range	11.9		18	GHz
<b>Coupler</b>				
Nominal Coupling Level		20		dB
Directivity	35			dB
Insertion Loss			0.2	dB
Main Line VSWR			1.1:1	
Secondary Line VSWR			1.25:1	
Coupling Flatness			±0.7	dB
Input Power (CW)			200	Watts
Input Power, Peak			50	kWatts

#### Mechanical Specifications

##### Size

Length	10.63 in [270 mm]
Width	1.31 in [33.27 mm]
Height	1.31 in [33.27 mm]
Weight	0.57 lbs [258.55 g]
Flange Type	UG Cover

Click the following link (or enter part number in "SEARCH" on website) to obtain additional part information including price, inventory and certifications: [WR-62 Waveguide 20 dB Broadwall Coupler, UG Cover Flange, N-Type Female Coupled Port, 11.9 GHz to 18 GHz, Copper PEW62CP001-20](#)



WR-62 Waveguide 20 dB Broadwall Coupler, UG Cover Flange,  
N-Type Female Coupled Port, 11.9 GHz to 18 GHz, Copper

## Waveguide Couplers Technical Data Sheet

**PEW62CP001-20**

Flange Material and Plating  
RF Connector Type

Copper, Passivated  
N Female

Coupler Body Material and Plating

Copper, Passivated

### Environmental Specifications

**Compliance Certifications** (see [product page](#) for current document)

### Plotted and Other Data

Notes:

WR-62 Waveguide 20 dB Broadwall Coupler, UG Cover Flange, N-Type Female Coupled Port, 11.9 GHz to 18 GHz, Copper from Pasternack Enterprises has same day shipment for domestic and International orders. Our RF, microwave and millimeter wave products maintain a 99.4% availability and are part of the broadest selection in the industry.

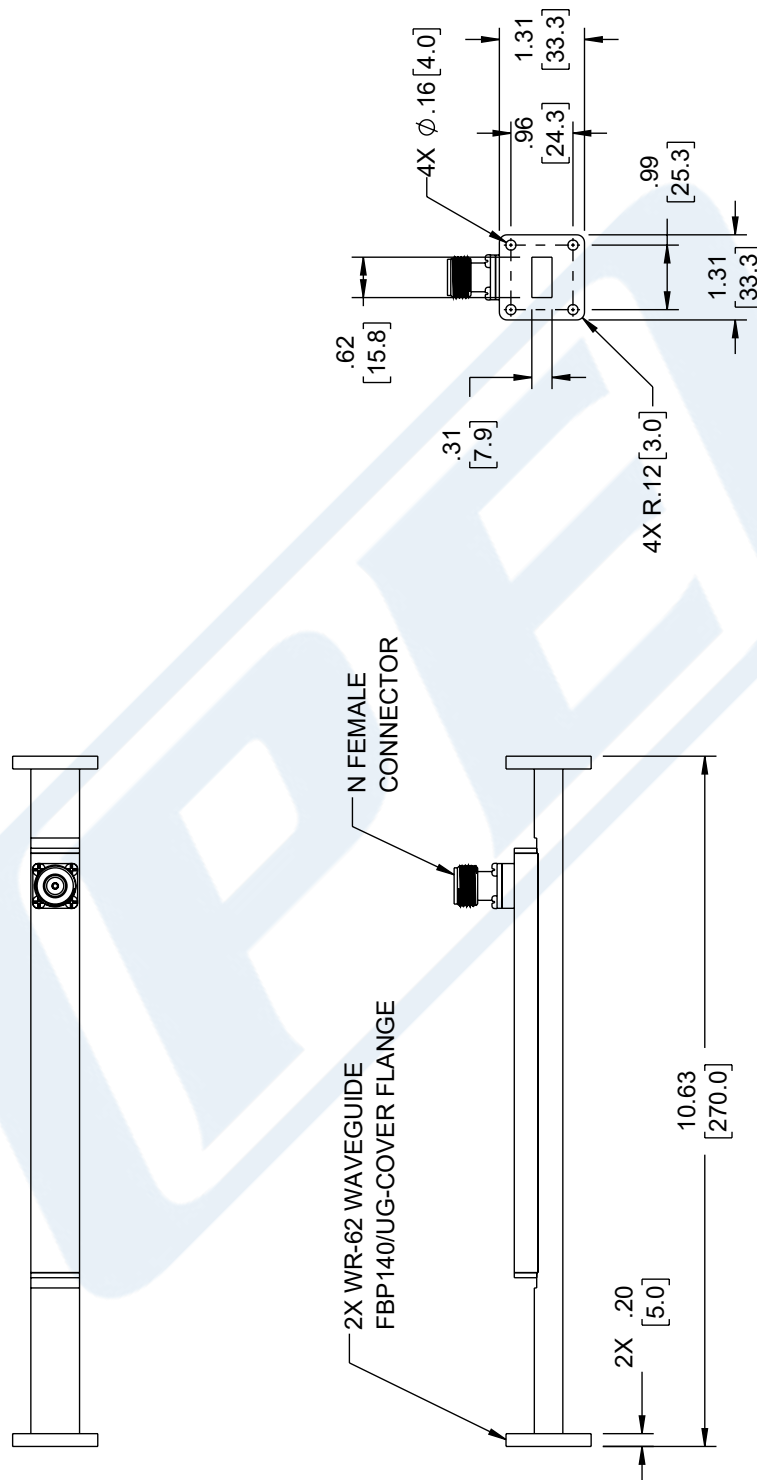
Click the following link (or enter part number in "SEARCH" on website) to obtain additional part information including price, inventory and certifications: [WR-62 Waveguide 20 dB Broadwall Coupler, UG Cover Flange, N-Type Female Coupled Port, 11.9 GHz to 18 GHz, Copper PEW62CP001-20](#)



URL: <https://www.pasternack.com/wr62-waveguide-20db-broadwall-coupler-ug-18mhz-pew62cp001-20-p.aspx>

The information contained in this document is accurate to the best of our knowledge and representative of the part described herein. It may be necessary to make modifications to the part and/or the documentation of the part, in order to implement improvements. Pasternack reserves the right to make such changes as required. Unless otherwise stated, all specifications are nominal. Pasternack does not make any representation or warranty regarding the suitability of the part described herein for any particular purpose, and Pasternack does not assume any liability arising out of the use of any part or documentation.

WR-62 Waveguide 20 dB Broadwall Coupler, UG Cover Flange,  
N-Type Female Coupled Port, 11.9 GHz to 18 GHz, Copper

ZONE	REV	DESCRIPTION	DATE	CHANGED BY	APPROVED
	A	INITIAL RELEASE	05/31/2023	HBAKKE	SPONG



UNLESS OTHERWISE SPECIFIED LEADING DIMENSIONS ARE INCHES DIMENSIONS IN [ ] ARE MILLIMETERS		 	
TOLERANCES:		INTERPRET ALL DIMENSIONS AND TOLERANCES PER ASME Y14.5	
$.X \pm .2$	[ 5 ]	SCALE	SHEET
$.XX \pm .02$	[ .5 ]		
$.XXX \pm .005$	[ .13 ]		
ANGLES $\pm 1^\circ$		NONE	
CABLE LENGTH TOLERANCES:		1 OF 1	
DESCRIPTION			
WR-62 Waveguide broadband coupler, 20dB with N-type female connector			
SIZE		CAGE CODE	ITEM NO.
A	53919	HBAKKE	PEW62CP001-20
ALL DIMENSIONS ARE FOR REFERENCE ONLY AND SUBJECT TO CHANGE WITHOUT NOTICE.			

THE INFORMATION CONTAINED IN THIS DRAWING IS THE SOLE PROPERTY OF INFINITE ELECTRONICS, INC. ANY REPRODUCTION IN WHOLE OR IN PART WITHOUT THE WRITTEN PERMISSION OF INFINITE ELECTRONICS, INC. IS PROHIBITED. THESE COMMODITIES, TECHNOLOGY OR SOFTWARE WERE EXPORTED FROM THE UNITED STATES IN ACCORDANCE WITH THE EXPORT ADMINISTRATION REGULATIONS. DIVERSION CONTRARY TO U.S. LAW PROHIBITED.