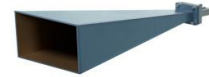


WR-112 Standard Gain Horn with 20 dBi gain, SMA Female connector



PEWAN112-20SF

Features

- 7.05 GHz to 10 GHz
- WR-112 Waveguide Band
- 20 dBi Nominal Gain
- SMA Female Connector

Applications

- Antenna Measurements
- Wireless Communication
- Laboratory Use
- Microwave Radio Systems
- Radome Testing
- Automotive Antenna Test Solutions
- Radar Cross Section
- Satellite Antenna Testing

Description

The PEWAN112-20SF standard gain horn antenna (also known as waveguide horn) from Pasternack is part of our comprehensive selection of waveguide antennas. This standard gain horn is mated with a WR-112 to SMA Female waveguide to coaxial adapter and operates from 7.05 GHz to 10 GHz.

Our PEWAN112-20SF standard gain horn antenna has a nominal gain of 20 dBi with a Horizontal and Vertical HPBW (Half Power Beam Width) of 17.5 dB and 17.3 dB respectively. Pasternack's SMA Female to WR-112 standard gain horns are available in 10, 15 and 20 dBi models with pyramidal shape and connectorized input.

Waveguide antennas, such as the PEWAN112-20SF are used in a wide variety of applications due to the high-power handling capability, low loss, high directivity, and near constant electrical performance. Our WR-112 waveguide antennas with SMA Female interface is part of over 40,000 RF, microwave and millimeter wave components from Pasternack available worldwide and Ship same day.

Configuration

Design	WR-112
Coaxial Interface	SMA Female

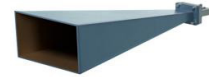
Electrical Specifications

Description	Minimum	Typical	Maximum	Units
Frequency Range	7.05		10	GHz
Gain		20		
Horizontal Half Power Beam Width		17.5		Degrees
Vertical Half Power Beam Width		17.3		
Waveguide to Coaxial Adapter				
VSWR			1.3:1	

Mechanical Specifications

Size	
Length	12.557 in [318.95 mm]
Width	5.487 in [139.37 mm]
Height	4.071 in [103.4 mm]
Weight	1.223 lbs [554.74 g]

WR-112 Standard Gain Horn with 20 dBi gain, SMA Female connector



PEWAN112-20SF

RF Connector

Type

SMA Female

Waveguide Interface

Waveguide Size

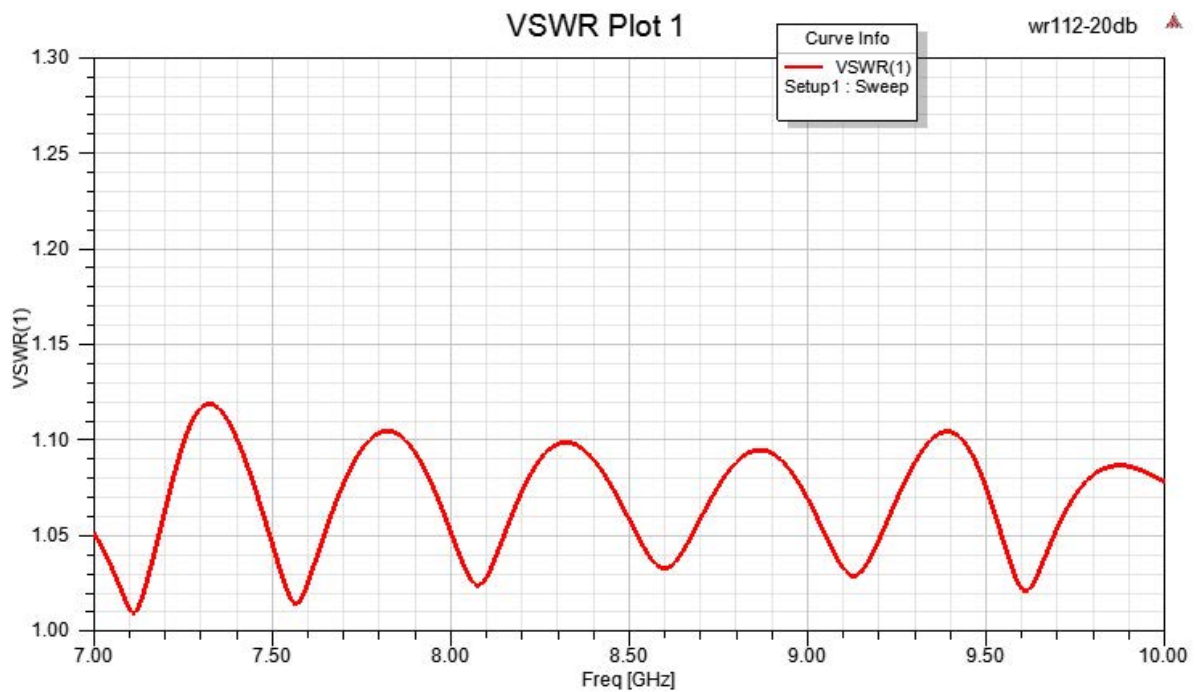
WR-112

Compliance Certifications (see [product page](#) for current document)

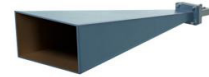
Plotted and Other Data

Notes:

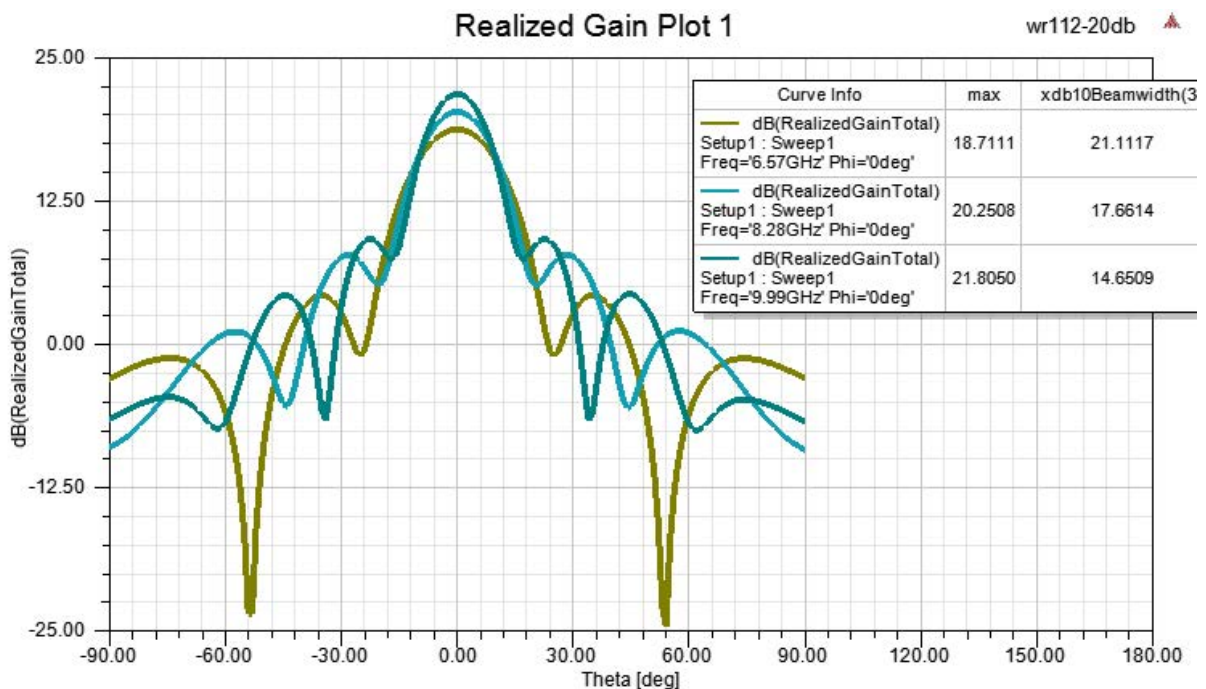
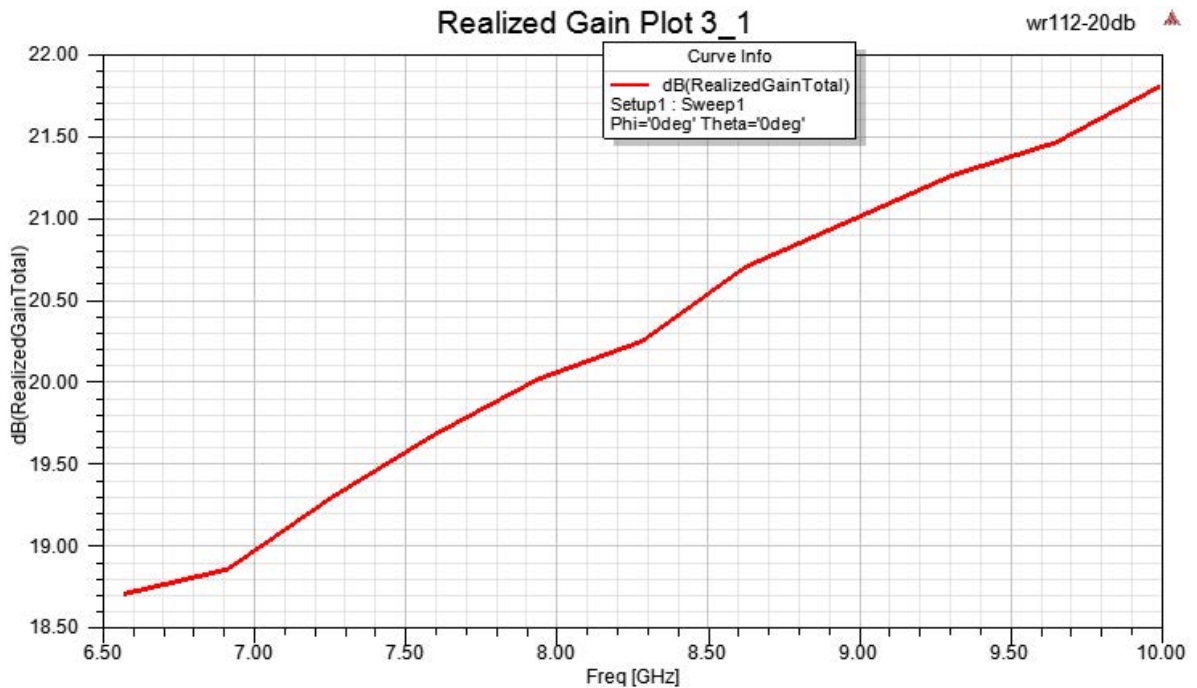
Typical Performance Data



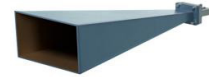
WR-112 Standard Gain Horn with 20 dBi
gain, SMA Female connector



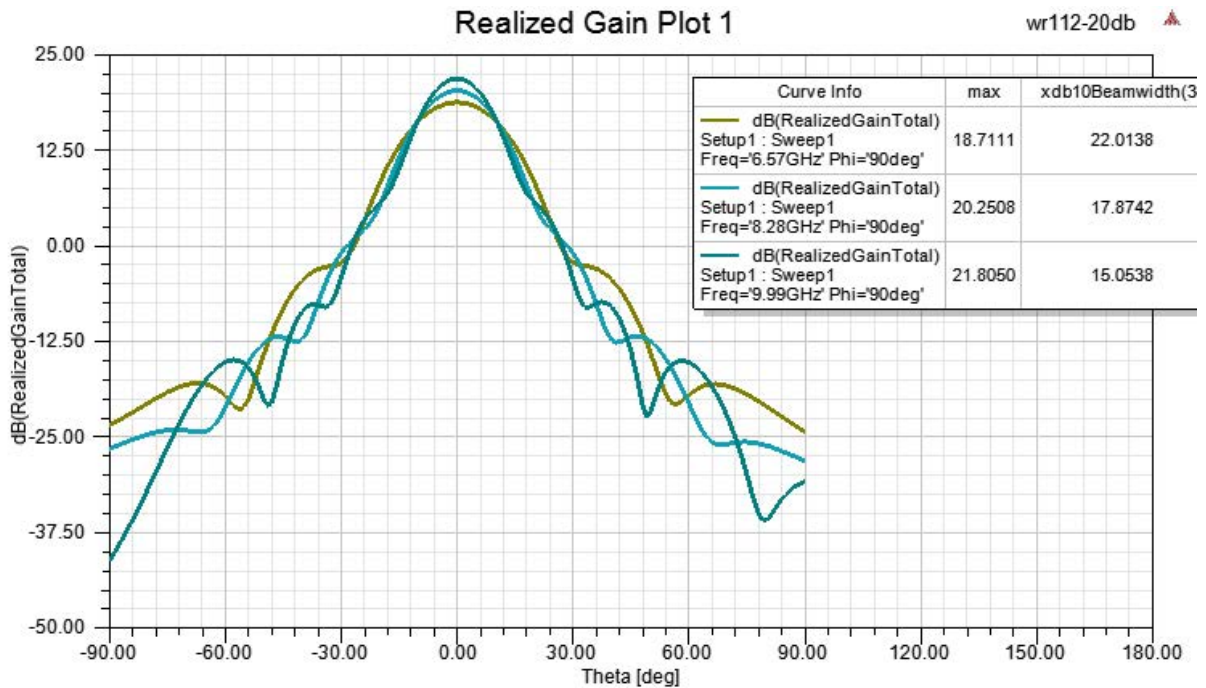
PEWAN112-20SF



WR-112 Standard Gain Horn with 20 dBi gain, SMA Female connector



PEWAN112-20SF



WR-112 Standard Gain Horn with 20 dBi gain, SMA Female connector from Pasternack Enterprises has same day shipment for domestic and International orders. Our RF, microwave and millimeter wave products maintain a 99.4% availability and are part of the broadest selection in the industry.

Click the following link (or enter part number in "SEARCH" on website) to obtain additional part information including price, inventory and certifications: [WR-112 Standard Gain Horn with 20 dBi gain, SMA Female connector PEWAN112-20SF](#)

URL: <https://www.pasternack.com/wr-112-waveguide-standard-gain-horn-antenna-20-dbi-sma-pewan112-20sf-p.aspx>

The information contained within this document is accurate to the best of our knowledge and representative of the part described herein. It may be necessary to make modifications to the part and/or the documentation of the part in order to implement improvements. Pasternack Enterprises reserves the right to make such changes as required. Unless otherwise stated, all specifications are nominal. Pasternack Enterprises does not make any representation or warranty regarding the suitability of the part described herein for any particular purpose, and Pasternack Enterprises does not assume liability arising out of the use of any part or document.

WR-112 Standard Gain Horn with 20 dBi gain, SMA Female connector

