

WR-2300 Waveguide Standard Gain Horn Antenna
Operating From 320 MHz to 490 MHz, 10 dBi
Gain with N Type Female Connector

Specialty Waveguide Antennas Technical Data Sheet

PEWAN2300-10NF

Features

- 320 MHz to 490 MHz
- Linearly Polarized
- 10 dBi Nominal Gain
- WR-2300 with N Female coaxial connector
- Powder Coated Aluminum

Applications

- Antenna Measurements
- Wireless Communication
- Laboratory Use
- Microwave Testing
- Radome Testing
- EMC measurement
- Satellite Antenna Testing

Description

The PEWAN2300-10NF standard horn antenna (also known as waveguide horn) from Pasternack is part of our comprehensive selection of waveguide antennas. This WR-2300 waveguide horn features an N Female coaxial connector and operates from 320 to 490 MHz.

Our PEWAN2300-10NF standard gain horn antenna has a nominal gain of 10 dBi with a typical input VSWR of 1.5:1. Pasternack's waveguide horns are available in 10, 15, and 20 dBi models with varying frequency ranges to suit the application needs.

Waveguide antennas, such as the PEWAN2300-10NF are used in a wide variety of applications due to the high-power handling capability, low loss, high directivity, and near constant electrical performance. Our WR-2300 waveguide antennas with are part of over 40,000 RF, microwave, and millimeter wave components from Pasternack available worldwide and Ship same day.

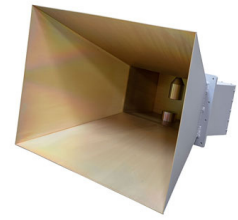
Configuration

Design	WR-2300 Standard Gain Horn
Pattern	Directional
Polarization	Linear
RF Connector	N Female

Electrical Specifications

Description	Minimum	Typical	Maximum	Units
Frequency Range	320		490	MHz
Nominal Gain		10		dBi
VSWR			1.5:1	

Click the following link (or enter part number in "SEARCH" on website) to obtain additional part information including price, inventory and certifications: [WR-2300 Waveguide Standard Gain Horn Antenna Operating From 320 MHz to 490 MHz, 10 dBi Gain with N Type Female Connector PEWAN2300-10NF](#)



WR-2300 Waveguide Standard Gain Horn Antenna
Operating From 320 MHz to 490 MHz, 10 dBi
Gain with N Type Female Connector

Specialty Waveguide Antennas Technical Data Sheet

PEWAN2300-10NF

Mechanical Specifications

Size

Length	33.5 in [850.9 mm]
Width	31.5 in [800.1 mm]
Height	45.3 in [115.06 cm]
Weight	111 lbs [50.35 kg]
RF Connector	N Female

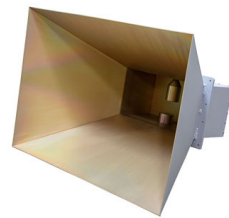
Environmental Specifications

Compliance Certifications (see [product page](#) for current document)

Plotted and Other Data

Notes:

Click the following link (or enter part number in "SEARCH" on website) to obtain additional part information including price, inventory and certifications: [WR-2300 Waveguide Standard Gain Horn Antenna Operating From 320 MHz to 490 MHz, 10 dBi Gain with N Type Female Connector PEWAN2300-10NF](#)



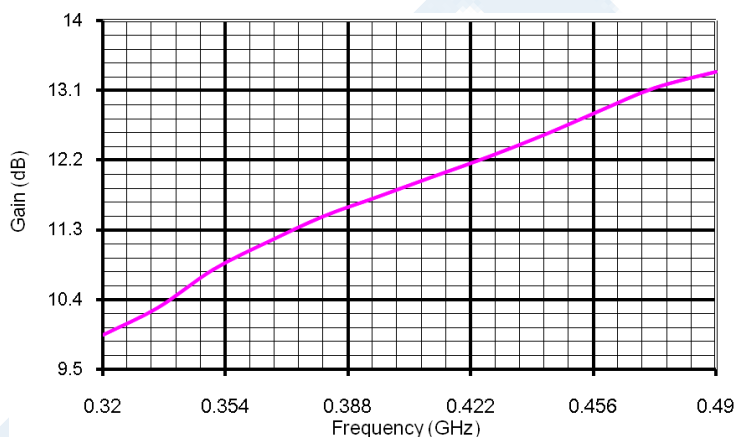
WR-2300 Waveguide Standard Gain Horn Antenna
Operating From 320 MHz to 490 MHz, 10 dBi
Gain with N Type Female Connector

Specialty Waveguide Antennas Technical Data Sheet

PEWAN2300-10NF

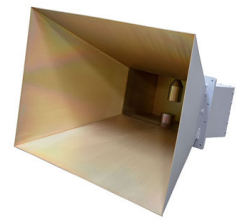
Typical Performance Data

Gain VS Frequency Curve:



Freq	Gain	Freq	Gain
0.32 GHz	9.95 dB	0.41 GHz	12.00 dB
0.34 GHz	10.30 dB	0.43 GHz	12.25 dB
0.35 GHz	10.79 dB	0.44 GHz	12.53 dB
0.37 GHz	11.15 dB	0.46 GHz	12.84 dB
0.38 GHz	11.48 dB	0.47 GHz	13.14 dB
0.40 GHz	11.74 dB	0.49 GHz	13.34 dB

Click the following link (or enter part number in "SEARCH" on website) to obtain additional part information including price, inventory and certifications: [WR-2300 Waveguide Standard Gain Horn Antenna Operating From 320 MHz to 490 MHz, 10 dBi Gain with N Type Female Connector PEWAN2300-10NF](#)

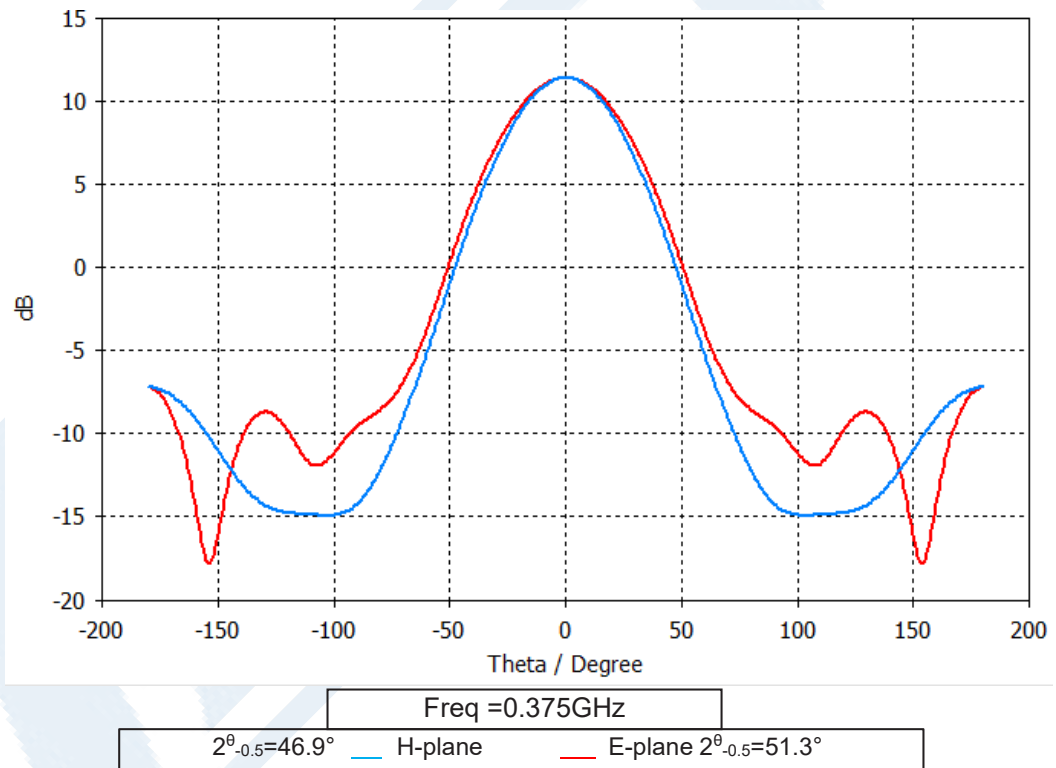


WR-2300 Waveguide Standard Gain Horn Antenna
Operating From 320 MHz to 490 MHz, 10 dBi
Gain with N Type Female Connector

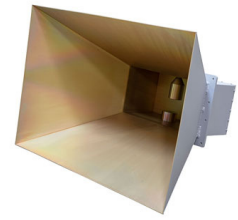
Specialty Waveguide Antennas Technical Data Sheet

PEWAN2300-10NF

Typical Pattern:



Click the following link (or enter part number in "SEARCH" on website) to obtain additional part information including price, inventory and certifications: [WR-2300 Waveguide Standard Gain Horn Antenna Operating From 320 MHz to 490 MHz, 10 dBi Gain with N Type Female Connector PEWAN2300-10NF](#)



WR-2300 Waveguide Standard Gain Horn Antenna
Operating From 320 MHz to 490 MHz, 10 dBi
Gain with N Type Female Connector

Specialty Waveguide Antennas Technical Data Sheet

PEWAN2300-10NF

WR-2300 Waveguide Standard Gain Horn Antenna Operating From 320 MHz to 490 MHz, 10 dBi Gain with N Type Female Connector from Pasternack Enterprises has same day shipment for domestic and International orders. Our RF, microwave and millimeter wave products maintain a 99.4% availability and are part of the broadest selection in the industry.

Click the following link (or enter part number in "SEARCH" on website) to obtain additional part information including price, inventory and certifications: [WR-2300 Waveguide Standard Gain Horn Antenna Operating From 320 MHz to 490 MHz, 10 dBi Gain with N Type Female Connector PEWAN2300-10NF](https://www.pasternack.com/wr-2300-waveguide-standard-gain-horn-antenna-operating-from-320-mhz-to-490-mhz-10-dbi-gain-with-n-type-female-connector-pewan2300-10nf-p.aspx)

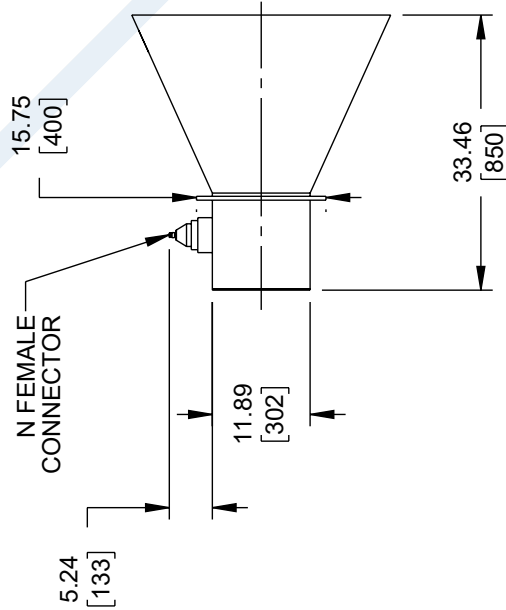
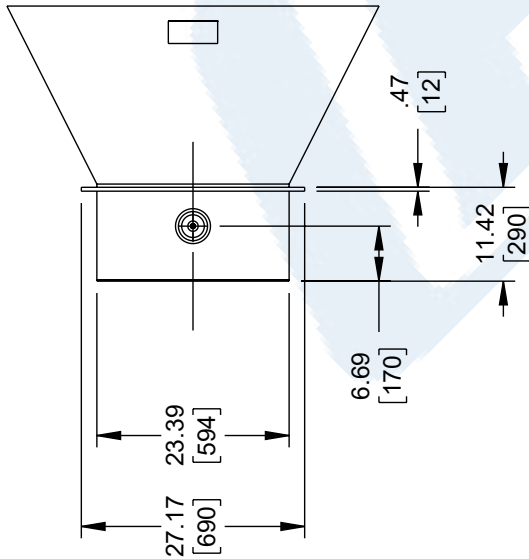
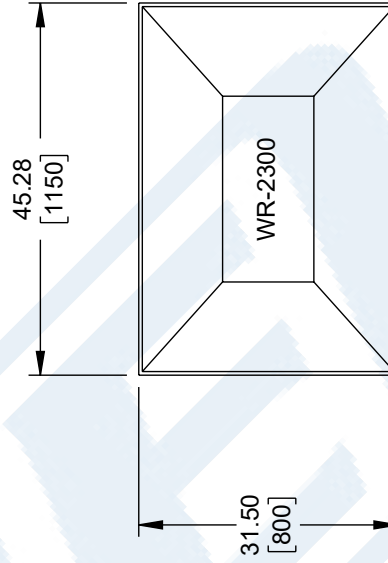
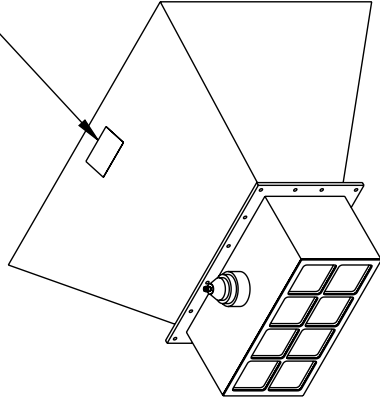
URL: <https://www.pasternack.com/wr-2300-waveguide-standard-gain-horn-antenna-operating-from-320-mhz-to-490-mhz-10-dbi-gain-with-n-type-female-connector-pewan2300-10nf-p.aspx>

The information contained in this document is accurate to the best of our knowledge and representative of the part described herein. It may be necessary to make modifications to the part and/or the documentation of the part, in order to implement improvements. Pasternack reserves the right to make such changes as required. Unless otherwise stated, all specifications are nominal. Pasternack does not make any representation or warranty regarding the suitability of the part described herein for any particular purpose, and Pasternack does not assume any liability arising out of the use of any part or documentation.

PEWAN2300-10NF CAD Drawing

WR-2300 Waveguide Standard Gain Horn Antenna Operating From
320 MHz to 490 MHz, 10 dBi Gain with N Type Female Connector

LABEL
SEE NOTE 1



UNLESS OTHERWISE SPECIFIED
LEADING DIMENSIONS ARE INCHES
DIMENSIONS IN [] ARE MILLIMETERS

TOLERANCES:

X = ±.2 [5] FRACTIONS
.XX = ±.02 [.5] ±.132
XXX = ±.005 [.13] ANGLES ± 1°

CABLE LENGTH TOLERANCES:

≤12 [305] = ±1 [25] / -0
>12 [305] ≤ 60 [1524] = +2 [51] / -0
>60 [1524] ≤ 120 [3048] = +4 [102] / -0
>120 [3048] ≤ 300 [7620] = +6 [152] / -0
>300 [7620] = +5% / -0

ALL DIMENSIONS ARE FOR REFERENCE ONLY
AND SUBJECT TO CHANGE WITHOUT NOTICE.

Fairview Microwave®
an INFINITE® brand

Website: www.FairviewMicrowave.com
Phone: 1.800.715.4396 | 1.972.649.6678

DESCRIPTION

WR-2300 STANDARD GAIN HORN ANTENNA, 0.32-0.49 GHz,
10 dBi Gain, N FEMALE



INTERPRET ALL DIMENSIONS AND
TOLERANCES PER ASME Y14.5

SCALE

NONE

SHEET

1 OF 1

THE INFORMATION CONTAINED IN THIS DRAWING IS THE SOLE PROPERTY OF INFINITE ELECTRONICS, INC. ANY REPRODUCTION IN
PART OR WHOLE WITHOUT THE WRITTEN PERMISSION OF INFINITE ELECTRONICS, INC. IS PROHIBITED.
THESE COMMODITIES, TECHNOLOGY OR SOFTWARE WERE EXPORTED FROM THE UNITED STATES IN ACCORDANCE WITH THE
EXPORT ADMINISTRATION REGULATIONS. DIVERSION CONTRARY TO U.S. LAW PROHIBITED.

NOTES:

1. LABEL PER ILS-100-03 (FOR INTERNAL REFERENCE ONLY).
LABEL LOCATION FOR REFERENCE ONLY.