

WR-510 Waveguide Standard Gain Horn Antenna Operating
From 1.45 GHz to 2.2 GHz, 15 dBi Gain with CPR-510F Flange

Waveguide Antennas Technical Data Sheet

PEWAN510-15

Features

- 1450 MHz to 2200 MHz
- Linearly Polarized
- 15 dBi Nominal Gain
- WR-510 with CPR-510F Flange
- Powder Coated Aluminum

Applications

- Antenna Measurements
- Wireless Communication
- Laboratory Use
- Microwave Testing
- Radome Testing
- EMC measurement
- Satellite Antenna Testing

Description

The PEWAN510-15 standard horn antenna (also known as waveguide horn) from Pasternack is part of our comprehensive selection of waveguide antennas. This WR-510 waveguide horn features an CPR-510F waveguide flange and operates from 1450 to 2200 MHz.

Our PEWAN510-15 standard gain horn antenna has a nominal gain of 15 dBi with a typical input VSWR of 1.5:1. Pasternack's waveguide horns are available in 10, 15, and 20 dBi models with varying frequency ranges to suit the application needs.

Waveguide antennas, such as the PEWAN510-15 are used in a wide variety of applications due to the high-power handling capability, low loss, high directivity, and near constant electrical performance. Our WR-510 waveguide antennas are part of over 40,000 RF, microwave, and millimeter wave components from Pasternack available worldwide and Ship same day.

Configuration

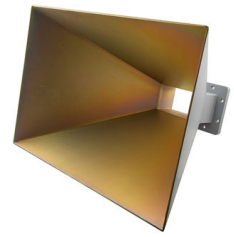
Design
Pattern
Polarization

WR-510 Standard Gain Horn
Directional
Linear

Electrical Specifications

Description	Minimum	Typical	Maximum	Units
Frequency Range	1.45		2.2	GHz
Nominal Gain		15		dBi
Horizontal Half Power Beam Width		30		Degrees
Vertical Half Power Beam Width		30		Degrees
VSWR			1.5:1	

Click the following link (or enter part number in "SEARCH" on website) to obtain additional part information including price, inventory and certifications: [WR-510 Waveguide Standard Gain Horn Antenna Operating From 1.45 GHz to 2.2 GHz, 15 dBi Gain with CPR-510F Flange PEWAN510-15](#)



WR-510 Waveguide Standard Gain Horn Antenna Operating
From 1.45 GHz to 2.2 GHz, 15 dBi Gain with CPR-510F Flange

Waveguide Antennas Technical Data Sheet

PEWAN510-15

Mechanical Specifications

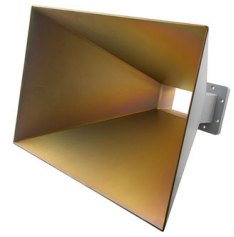
Size

Length	14.4 in [365.76 mm]
Width	18 in [457.2 mm]
Height	12.4 in [314.96 mm]
Weight	7.5 lbs [3.4 kg]

Waveguide Interface

Waveguide Size	WR-510
Flange Type	CPR-510F
Body Material and Plating	Aluminum

Click the following link (or enter part number in "SEARCH" on website) to obtain additional part information including price, inventory and certifications: [WR-510 Waveguide Standard Gain Horn Antenna Operating From 1.45 GHz to 2.2 GHz, 15 dBi Gain with CPR-510F Flange PEWAN510-15](#)



WR-510 Waveguide Standard Gain Horn Antenna Operating
From 1.45 GHz to 2.2 GHz, 15 dBi Gain with CPR-510F Flange

Waveguide Antennas Technical Data Sheet

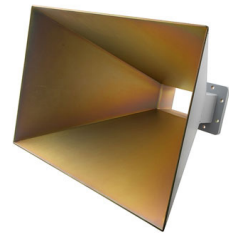
PEWAN510-15

Compliance Certifications (see [product page](#) for current document)

Plotted and Other Data

Typical Performance Data

Click the following link (or enter part number in "SEARCH" on website) to obtain additional part information including price, inventory and certifications: [WR-510 Waveguide Standard Gain Horn Antenna Operating From 1.45 GHz to 2.2 GHz, 15 dBi Gain with CPR-510F Flange PEWAN510-15](#)

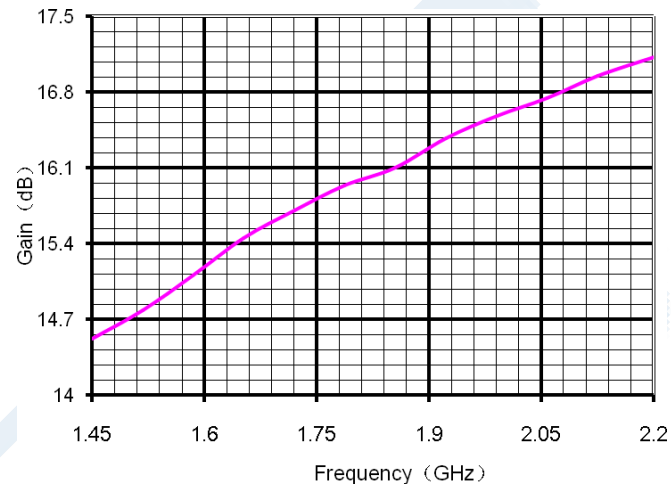


WR-510 Waveguide Standard Gain Horn Antenna Operating
From 1.45 GHz to 2.2 GHz, 15 dBi Gain with CPR-510F Flange

Waveguide Antennas Technical Data Sheet

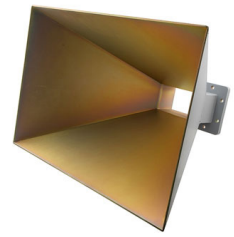
PEWAN510-15

Gain VS Frequency Curve:



Freq	Gain	Freq	Gain
1.45 GHz	14.52 dB	1.86 GHz	16.10 dB
1.52 GHz	14.78 dB	1.92 GHz	16.37 dB
1.59 GHz	15.10 dB	1.99 GHz	16.58 dB
1.65 GHz	15.45 dB	2.06 GHz	16.74 dB
1.72 GHz	15.70 dB	2.13 GHz	16.95 dB
1.79 GHz	15.94 dB	2.20 GHz	17.13 dB

Click the following link (or enter part number in "SEARCH" on website) to obtain additional part information including price, inventory and certifications: [WR-510 Waveguide Standard Gain Horn Antenna Operating From 1.45 GHz to 2.2 GHz, 15 dBi Gain with CPR-510F Flange PEWAN510-15](#)

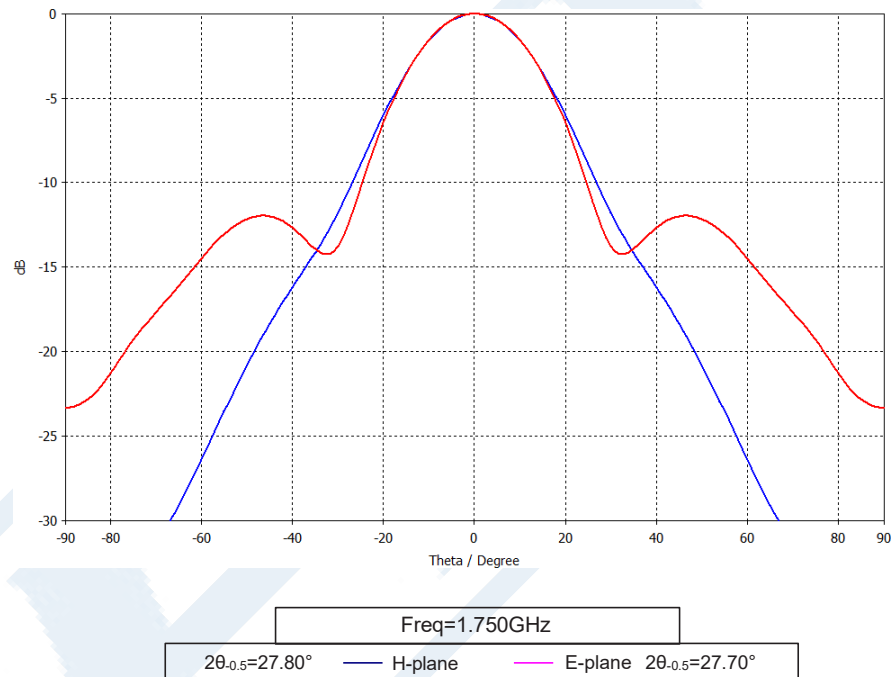


WR-510 Waveguide Standard Gain Horn Antenna Operating
From 1.45 GHz to 2.2 GHz, 15 dBi Gain with CPR-510F Flange

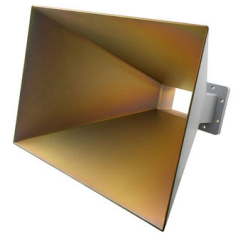
Waveguide Antennas Technical Data Sheet

PEWAN510-15

Typical Pattern:



Click the following link (or enter part number in "SEARCH" on website) to obtain additional part information including price, inventory and certifications: [WR-510 Waveguide Standard Gain Horn Antenna Operating From 1.45 GHz to 2.2 GHz, 15 dBi Gain with CPR-510F Flange PEWAN510-15](#)



WR-510 Waveguide Standard Gain Horn Antenna Operating From 1.45 GHz to 2.2 GHz, 15 dBi Gain with CPR-510F Flange

Waveguide Antennas Technical Data Sheet

PEWAN510-15

WR-510 Waveguide Standard Gain Horn Antenna Operating From 1.45 GHz to 2.2 GHz, 15 dBi Gain with CPR-510F Flange from Pasternack Enterprises has same day shipment for domestic and International orders. Our RF, microwave and millimeter wave products maintain a 99.4% availability and are part of the broadest selection in the industry.

Click the following link (or enter part number in "SEARCH" on website) to obtain additional part information including price, inventory and certifications: [WR-510 Waveguide Standard Gain Horn Antenna Operating From 1.45 GHz to 2.2 GHz, 15 dBi Gain with CPR-510F Flange PEWAN510-15](https://www.pasternack.com/wr-510-waveguide-standard-gain-horn-antenna-operating-from-1.45-ghz-to-2.2-ghz-15-dbi-gain-with-cpr-510f-flange-pewan510-15)

URL: <https://www.pasternack.com/wr-510-waveguide-standard-gain-horn-antenna-operating-from-1.45-ghz-to-2.2-ghz-15-dbi-gain-with-cpr-510f-flange-pewan510-15-p.aspx>

The information contained in this document is accurate to the best of our knowledge and representative of the part described herein. It may be necessary to make modifications to the part and/or the documentation of the part, in order to implement improvements. Pasternack reserves the right to make such changes as required. Unless otherwise stated, all specifications are nominal. Pasternack does not make any representation or warranty regarding the suitability of the part described herein for any particular purpose, and Pasternack does not assume any liability arising out of the use of any part or documentation.

PEWAN510-15 CAD Drawing

WR-510 Waveguide Standard Gain Horn Antenna Operating From
1.45 GHz to 2.2 GHz, 15 dBi Gain with CPR-510F Flange

F

E

C

B

A

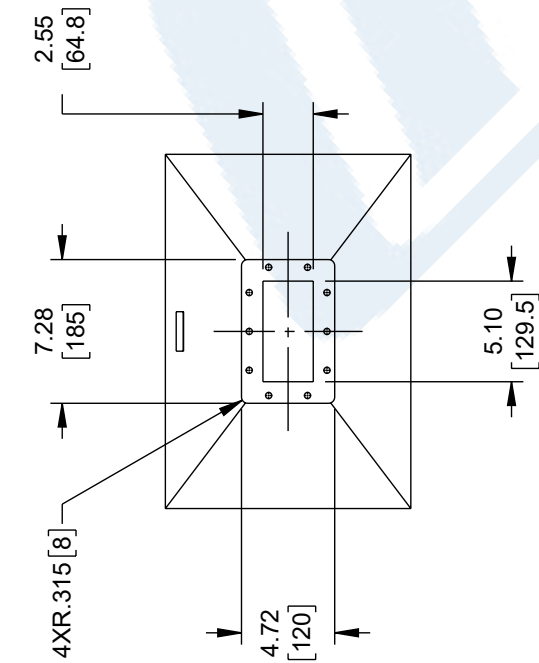
F

E

C

B

A



2.55
[64.8]

7.28
[185]

4.72
[120]

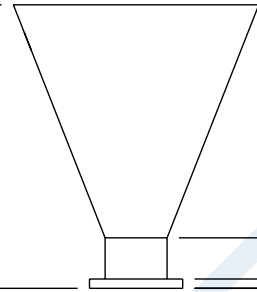
5.10
[129.5]

10X Ø .315 [8] THRU

14.37
[365]

17.95
[456]

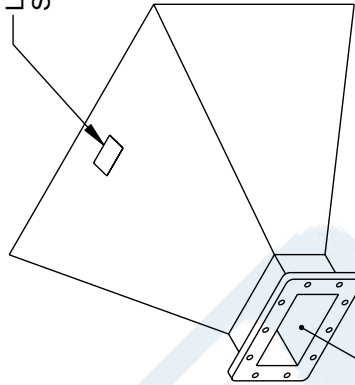
12.44
[316]



.47
[12]

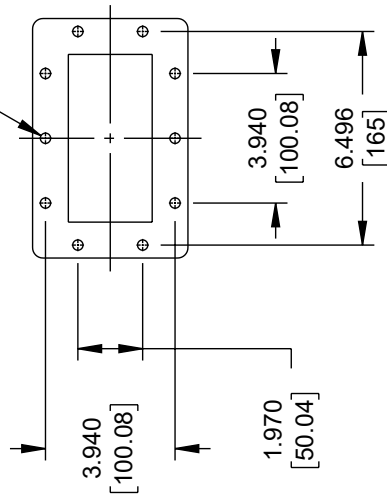
2.56
[65]

LABEL
SEE NOTE 1



WR-510
CPR-510F FLANGE

VIEW A-A



3.940
[100.08]

1.970
[50.04]

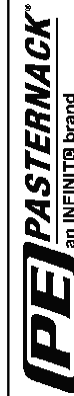
3.940
[100.08]

6.496
[165]

NOTES:

1. LABEL PER ILS-100-03 (FOR INTERNAL REFERENCE ONLY).
LABEL LOCATION FOR REFERENCE ONLY.

THE INFORMATION CONTAINED IN THIS DRAWING IS THE SOLE PROPERTY OF INFINITE ELECTRONICS, INC. ANY REPRODUCTION IN PART OR WHOLE WITHOUT THE WRITTEN PERMISSION OF INFINITE ELECTRONICS, INC. IS PROHIBITED. THESE COMMODITIES, TECHNOLOGY OR SOFTWARE WERE EXPORTED FROM THE UNITED STATES IN ACCORDANCE WITH THE EXPORT ADMINISTRATION REGULATIONS. DIVERSION CONTRARY TO U.S. LAW PROHIBITED.



Website: www.Pasternack.com
Phone: 1.866.727.8376 | 1.949.261.1920

DESCRIPTION

WR-510 STANDARD GAIN HORN ANTENNA, 1.45-2.20 GHz,
15 dBi Gain, CPR-510F FLANGE

INTERPRET ALL DIMENSIONS AND
TOLERANCES PER ASME Y14.5

SCALE
NONE

SHEET
1 OF 1

SIZE A
CAGE CODE 53919
DRAWN BY KGLEBOVA
ITEM NO. PEWAN510-15

REV A